

SUZUKI

PARTS CATALOGUE

DF2.5

DF2.5



OUTBOARD MOTOR

2011-5

1ST EDITION

PREFACE

When it becomes necessary to replace parts on SUZUKI OUTBOARD MOTORS, always use SUZUKI GENUINE PARTS which have passed a strict inspection which guarantees quality and performance.

This parts catalogue covers the list of all service parts for SUZUKI DF2.5 production 2011.

INSTRUCTIONS FOR QUOTING THE CATALOGUE

1. DIMENSIONS

Dimensions of the parts in this catalogue are indicated in unit millimeters.

2. ABBREVIATIONS

Abbreviations used in this catalogue are as follows:

AR	: As required	NT	: Number of teeth
ASSY	: Assembly	OPT	: Optional
E.NO.	: Engine number	OS	: Over size
F.NO.	: Frame number	STD	: Standard
D	: Diameter of material	T	: Thickness
ID	: Inside diameter	US	: Under size
OD	: Outside diameter	W	: Width
L	: Length	W/	: With
LH(PORT)	: Left hand side	S	: Transom type
RH(STBD)	: Right hand side	SUS	: Stainless steel

~123456 : Up to E.NO. 00252F-123456

123456~ : From E.NO. 00252F-123456

12 x 34 x 5.6..... Figures in the description column

| | | show the dimensions of parts.

ID OD T(or W, L)

→12345-56781 (Parts No.) : indicates that the parts number was changed to 12345-56781 and the new parts are interchangeable with the former ones but the former ones are not interchangeable with new ones.

←12345-56781 (Parts No.) : indicates that the former and new parts are interchangeable with each other and both are usable.

3. INNER PARTS OF ASSEMBLY

Part name with a dot (.) in front as shown in the description column indicates the component of the assembly also available individually.

4. MODIFICATION NOTICE

A parts bulletin will be sent to you on all occasions when changes in parts occur, including interchangeable modifications between new parts and old ones.

5. NOTE

5-1. There are some different parts from those of production models among spare parts for the administrative reasons and common use of them with other models.

5-2. In respect of rubber hoses and vinyl tubes, please be sure to use them by cutting off according to the length mentioned on parts catalogue or what is actually required on the vehicle.

5-3. Note that the drawings on the illustration page are for ready reference of spare parts number, not to be used as an assembly manual.
When assembling, use "SUZUKI SERVICE MANUAL".

6. MODEL NAME AND ENGINE NUMBER

<u>MODEL</u>	<u>DESTINATION</u>	<u>TYPE</u>	<u>TRANSOM</u>	<u>ENGINE No.</u>
DF2.5S	P01	00252F	S	00252F-210001~

MILLIMETER → INCH CONVERSION CHART

	0	1	2	3	4	5	6	7	8	9
00	.000	.039	.079	.118	.157	.197	.236	.276	.315	.354
10	.394	.433	.472	.512	.551	.591	.630	.669	.709	.748
20	.787	.827	.866	.906	.945	.984	1.024	1.063	1.102	1.142
30	1.181	1.220	1.260	1.299	1.339	1.378	1.417	1.457	1.496	1.535
40	1.575	1.614	1.654	1.693	1.732	1.772	1.811	1.850	1.890	1.929
50	1.969	2.008	2.047	2.087	2.126	2.165	2.205	2.214	2.283	2.323
60	2.362	2.402	2.441	2.480	2.520	2.559	2.598	2.638	2.677	2.717
70	2.756	2.795	2.835	2.874	2.913	2.953	2.992	3.031	3.071	3.110
80	3.150	3.189	3.228	3.268	3.307	3.346	3.386	3.425	3.465	3.504
90	3.543	3.583	3.622	3.661	3.701	3.740	3.780	3.819	3.858	3.898

How to read

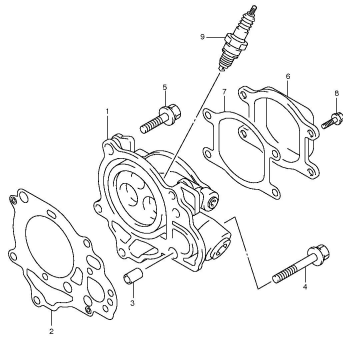
	0	1	2	3	4
00
10
20	0.906	...
30

23 millimeters equal 0.906 inch

Contents are subject to change without notice or obligation.

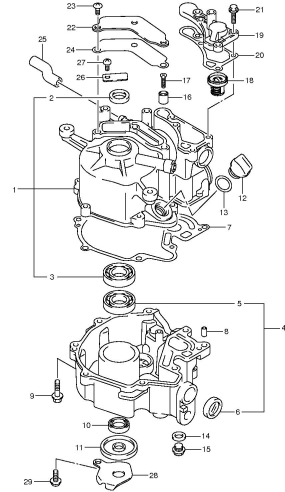
FIG. NO.	T I T L E	ADDRESS NO.
1	CYLINDER HEAD	1-B-02
2	CYLINDER BLOCK	1-B-03
3	CRANKSHAFT	1-B-04
4	INTAKE PIPE / SILENCER	1-B-05
5	CARBURETOR	1-B-06
6	WATER PUMP	1-B-07
7	RECOIL STARTER	1-B-08
8	OIL PUMP	1-B-09
9	CLUTCH LEVER	1-B-10
10	SHIFT ROD	1-B-11
11	DRIVE SHAFT	1-B-12
12	MAGNETO	1-B-13
13	CLAMP BRACKET	1-B-14
14	SWIVEL BRACKET	1-B-15
15	DRIVE SHAFT HOUSING	1-C-02
16	GEAR CASE	1-C-03
17	LOWER COVER	1-C-04
18	ENGINE COVER	1-C-05
19	TILLER HANDLE	1-C-06
20	FUEL TANK	1-C-07

FIG.1



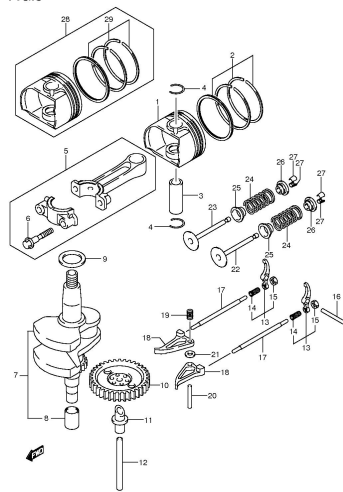
DF2.5 P01 012_001
CYLINDER HEAD

FIG.2



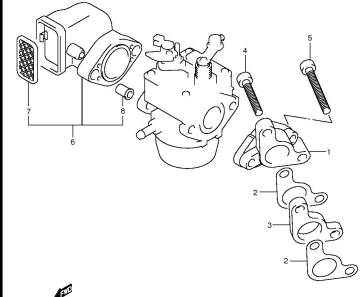
DF2.5 P01 012_002
CYLINDER BLOCK

FIG.3



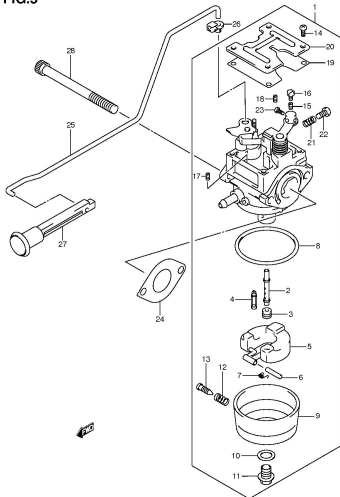
DF2.5 P01 012_003
CRANKSHAFT

FIG.4



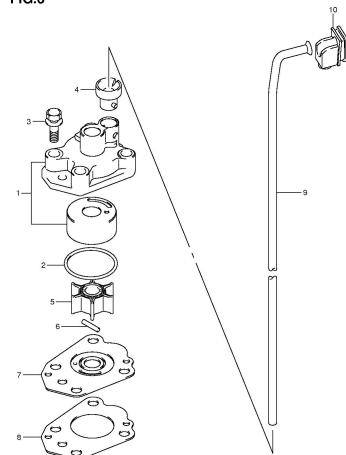
DF2.5 P01 012_004
INTAKE PIPE/SILENCER

FIG.5



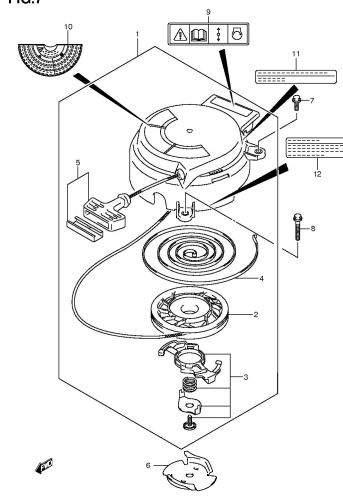
DF2.5 P01 012_005
CARBURETOR

FIG.6



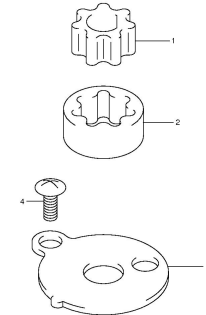
DF2.5 P01 012_006
WATER PUMP

FIG.7



DF2.5 P01 012_007
RECOIL STARTER

FIG.8



DF2.5 P01 012_008
OIL PUMP

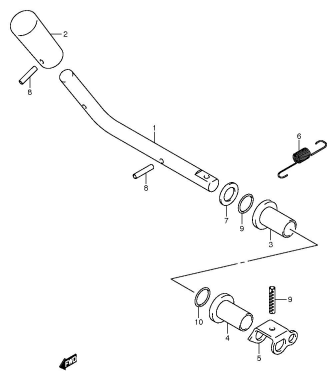
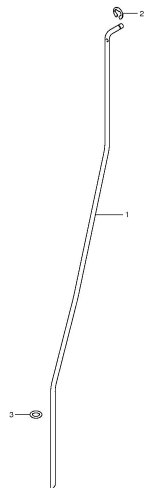
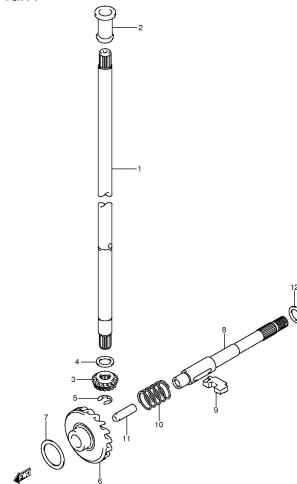
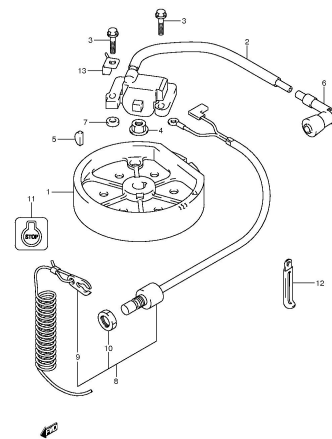
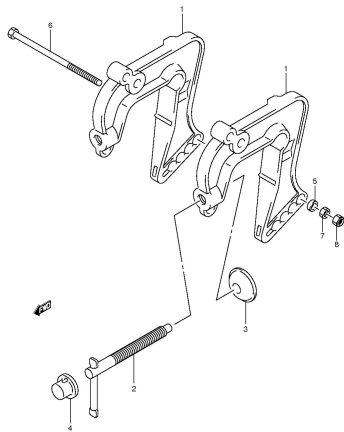
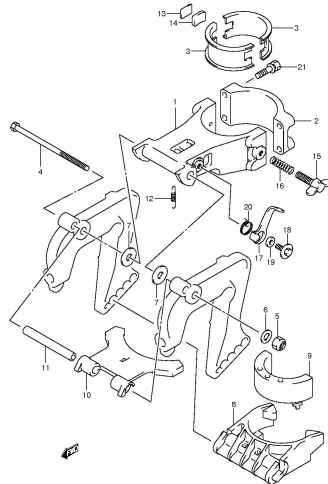
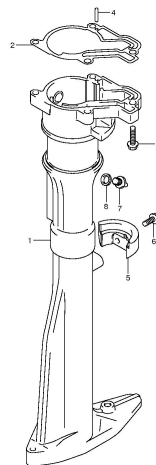
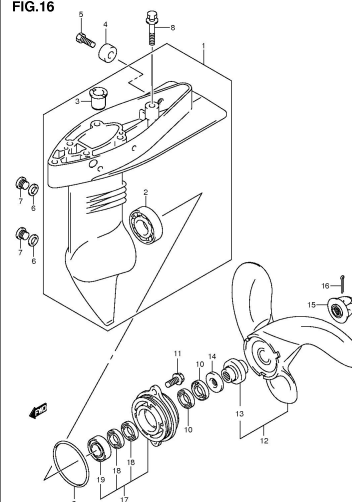
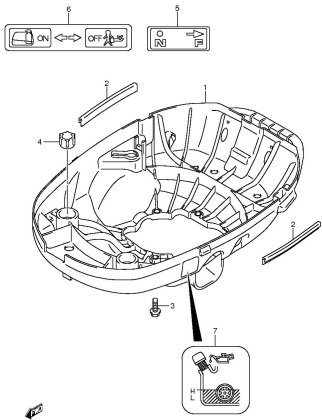
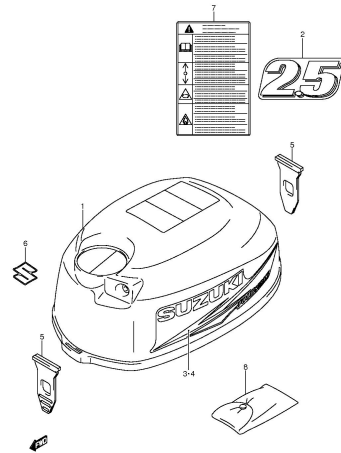
FIG.9DF2.5 P01 012_009
CLUTCH LEVER**FIG.10**DF2.5 P01 012_010
SHIFT ROD**FIG.11**DF2.5 P01 012_011
DRIVE SHAFT**FIG.12**DF2.5 P01 012_012
MAGNETO**FIG.13**DF2.5 P01 012_013
CLAMP BRACKET**FIG.14**DF2.5 P01 012_014
SWIVEL BRACKET**FIG.15**DF2.5 P01 012_015
DRIVE SHAFT HOUSING**FIG.16**DF2.5 P01 012_016
GEAR CASE

FIG.17



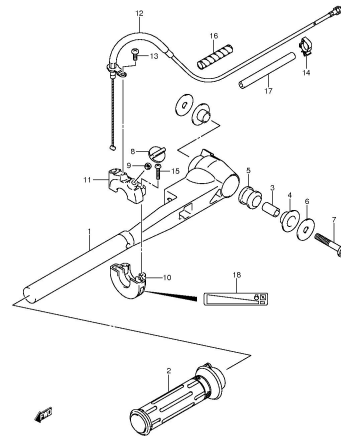
DFZ.5 P01 012_017
LOWER COVER

FIG.18



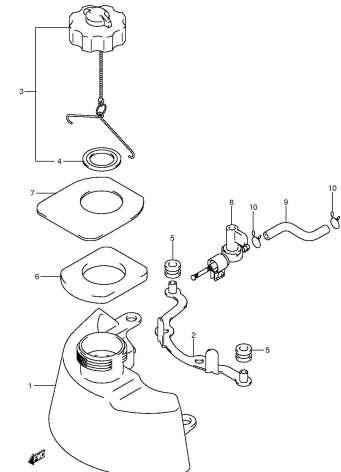
DFZ.5 P01 012_018
ENGINE COVER

FIG.19



DFZ.5 P01 012_019
TILLER HANDLE

FIG.20



DFZ.5 P01 012_020
FUEL TANK

FIG.1

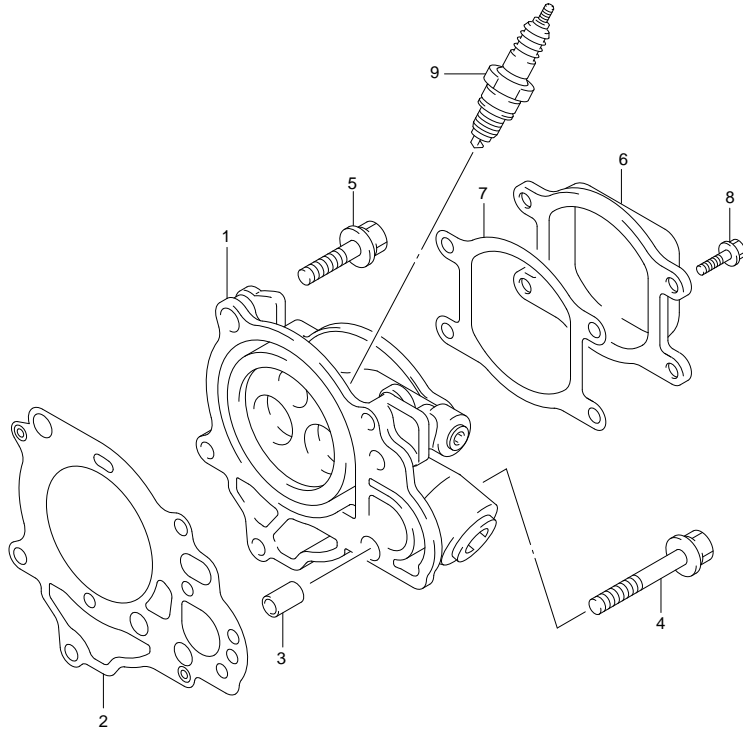


FIG.1 (1-B-2) CYLINDER HEAD

REF NO.	PART NO.	DESCRIPTION	QTY	REMARKS
1	11110-97J10	HEAD, CYLINDER	1	
2	11141-97JL0	GASKET, CYLINDER HEAD	1	
3	09206-08008	PIN	2	
4	11118-97JL0	BOLT, CYLINDER HEAD	1	
5	11119-97JL0	BOLT, CYLINDER HEAD	4	
6	11171-97J10	COVER, CYLINDER HEAD	1	
7	11189-97JL0	GASKET, CYLINDER HEAD COVER	1	
8	01547-05107	BOLT	4	
9	09482-00406	SPARK PLUG (CR6HSA)	1	



FIG.2

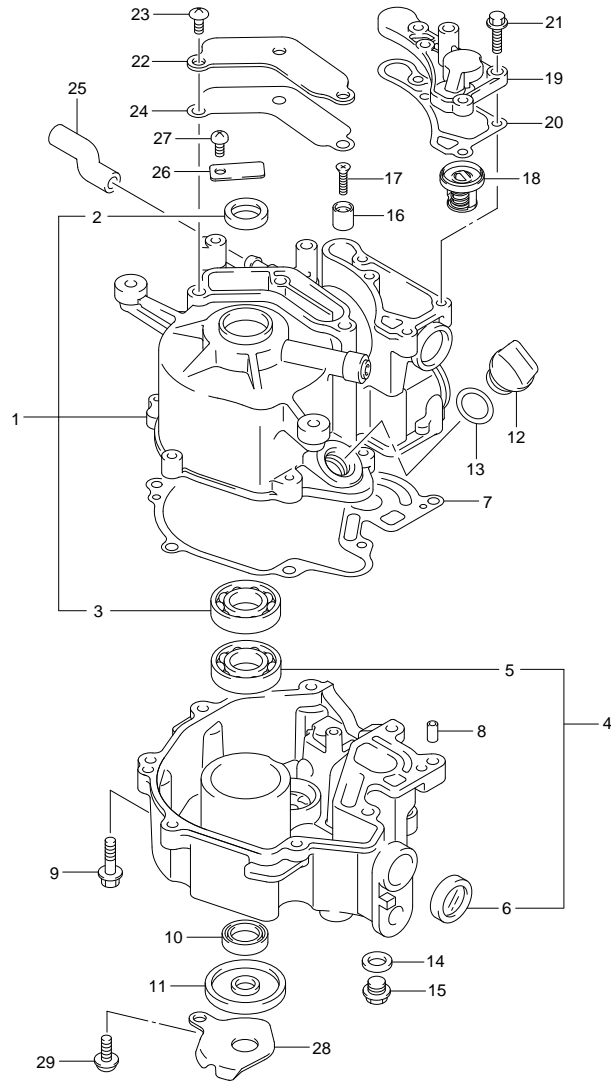
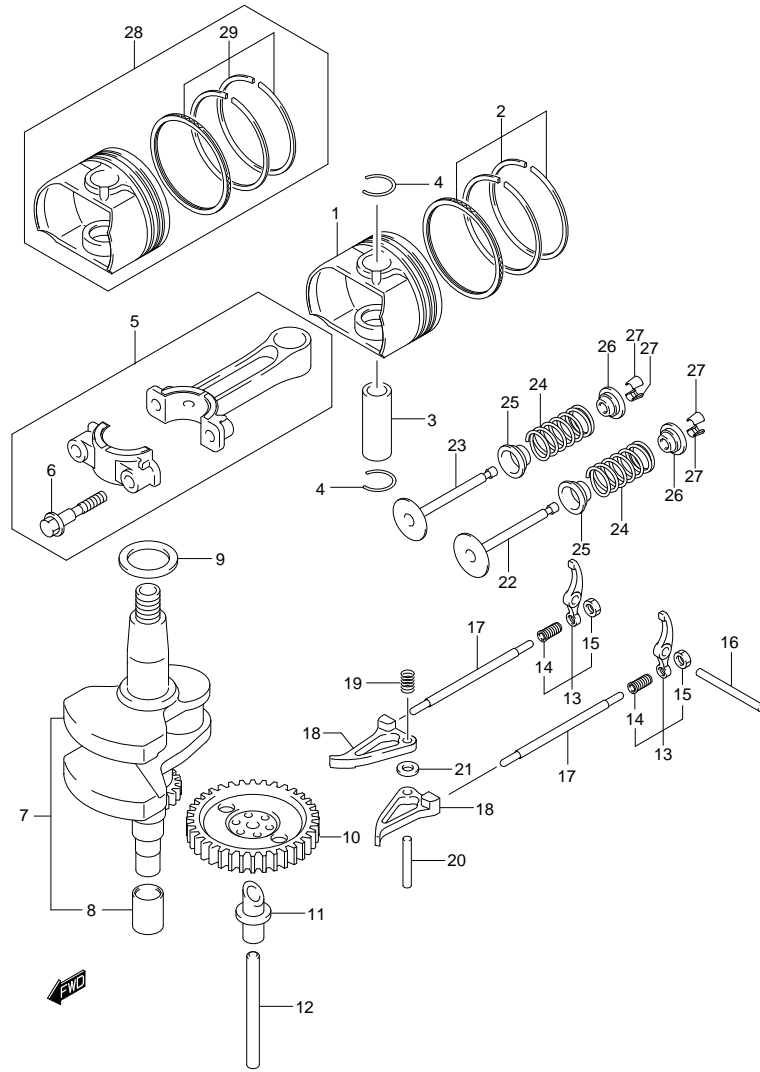


FIG.2 (1-B-3) CYLINDER BLOCK

REF NO.	PART NO.	DESCRIPTION	Q'TY	REMARKS
1	11200-97J00	BLOCK ASSY, CYLINDER	1	
2	59295-97J00	·SEAL, CRANKSHAFT OIL	1	
3	09262-17023	·BEARING (17X40X12)	1	UPPER
4	11300-97J00	CASE ASSY, CRANKSHAFT	1	
5	09262-17023	·BEARING (17X40X12)	1	LOWER
6	11971-91J01	·LENS, OIL LEVEL FILLER	1	
7	11351-97JL0	GASKET, CRANKCASE	1	
8	04221-05109	PIN	2	
9	01550-06257	BOLT	8	
10	59295-97J10	SEAL, DRIVE SHAFT OIL	1	
11	59295-97J20	SEAL, CRANKSHAFT OIL LOWER	1	
12	11382-97J00	CAP, OIL FILLER	1	
13	09280-15007	O RING (D:2.4, ID:15.8)	1	
14	09168-10022	GASKET (10X17X1.5)	1	
15	09248-10008	PLUG	1	
16	55321-95J00	ANODE, PROTECTION	1	
17	09126-05011	SCREW (5X20)	1	
18	17670-91J00	THERMOSTAT	1	
19	17681-97J20	COVER, THERMOSTAT	1	
20	17685-97J00	GASKET, THERMOSTAT COVER	1	
21	01550-06207	BOLT	4	
22	11173-97J00	PLATE, BREATHER	1	
23	02142-06127	BOLT	3	
24	11179-97J00	GASKET, BREATHER PLATE	1	
25	11174-97J00	HOSE, BREATHER	1	
26	11452-91J00	VALVE, REED	1	
27	02112-0612A	SCREW	1	
28	11431-97J11	PLATE, UNDER OIL SEAL	1	
29	11432-97JL0	BOLT, UNDER OIL SEAL PLATE	1	

FIG.3



DF2.5 P01 012_003
CRANKSHAFT

FIG.3 (1-B-4) CRANKSHAFT

REF NO.	PART NO.	DESCRIPTION	QTY	REMARKS
1	12111-97J10-0B0	PISTON	1	
2	12140-97J00	RING SET, PISTON	1	
3	12151-97J00	PIN, PISTON	1	
4	59382-97J00	CIRCLIP	2	
5	12160-97J00-0A0	CONNROD ASSY	1	RED
6	12163-92F00	·BOLT CONNROD	2	
7	12220-97J02	CRANKSHAFT	1	
8	12242-97J00	·SPLINE	1	
9	08211-17241	WASHER	1	
10	12710-97J00	CAMSHAFT	1	
11	12742-97J10	SHAFT, OIL PUMP	1	
12	12743-97J00	SHAFT	1	
13	12840-97J10	ARM ASSY, VALVE ROCKER	2	
14	12842-22G10	·SCREW, TAPPET ADJUSTING	2	
15	12843-27A00	·NUT, TAPPET ADJUSTING	2	
16	09261-04017	PIN	1	
17	12894-97J00	ROD, PUSH	2	
18	12845-97J00	ARM, CAM ROCKER	2	
19	12847-22G00	SPRING, CAM ROCKER ARM	1	
20	09261-04005	ROLLER	1	
21	08322-0104A	WASHER	2	
22	12911-97JL0	VALVE, INTAKE	1	
23	12915-97JL0	VALVE, EXHAUST	1	
24	12921-97JL0	SPRING, VALVE	2	
25	09289-04006	OIL SEAL (4X11.6X7.9)	2	
26	12931-97J00	RETAINER, VALVE SPRING	2	
27	12932-05C00	COTTER, VALVE	4	
28	12100-97J00-050	PISTON SET (OS:0.50)	1	OPT
29	12140-97J00-050	·RING SET, PISTON (OS:0.50)	1	OPT

DF2.5 P01 012

FIG.4

FIG.4 (1-B-5) INTAKE PIPE / SILENCER

REF NO.	PART NO.	DESCRIPTION	Q'TY	REMARKS
1	13111-97J00	PIPE, INTAKE	1	
2	13119-97J00	GASKET, INTAKE PIPE	2	
3	13124-97J00	INSULATOR, CARBURETOR	1	
4	07120-06257	BOLT	1	NO.1
5	07120-06357	BOLT	1	NO.2
6	13810-97J00	SILENCER	1	
7	13710-97J00	·ARRESTER, FLAME	1	
8	09180-06348	·SPACER (6.1X8.5X12.5)	2	

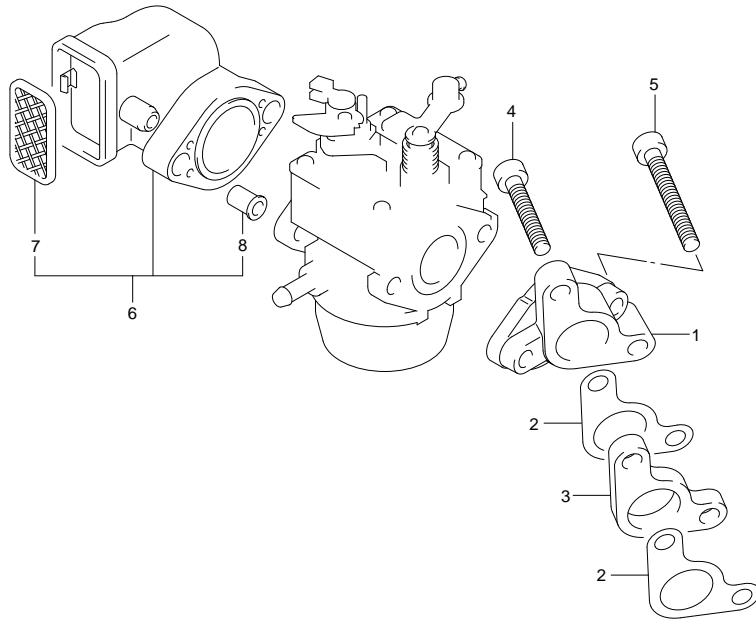


FIG.5

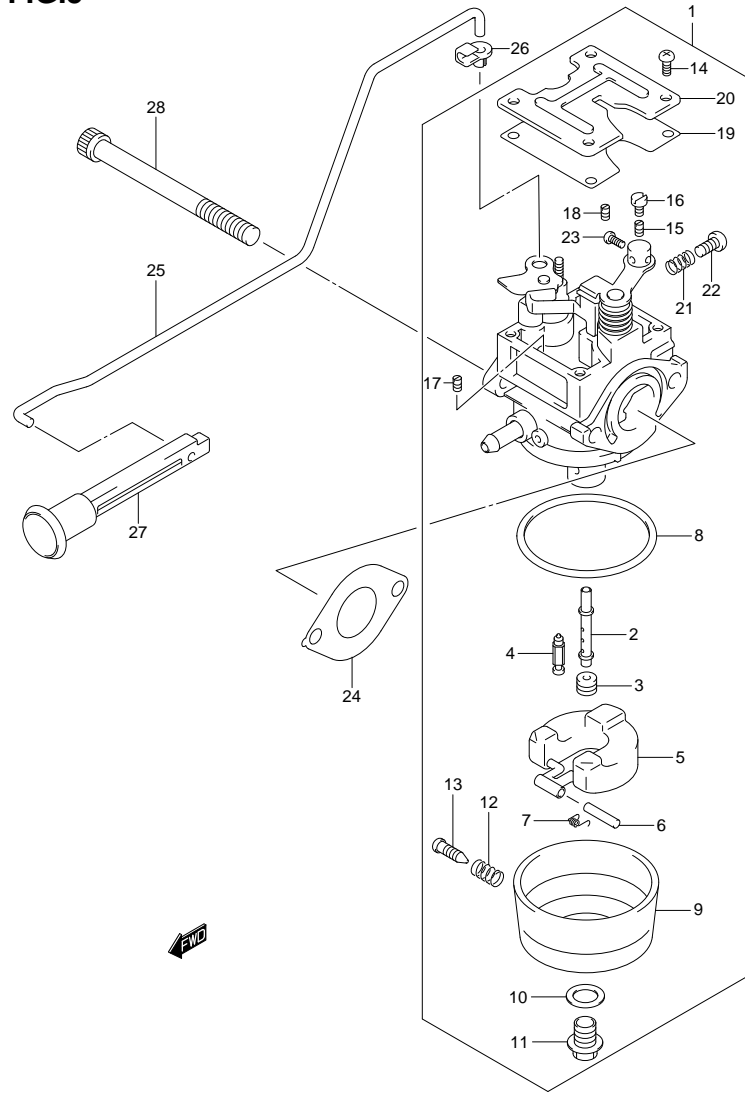


FIG.5 (1-B-6) CARBURETOR

REF NO.	PART NO.	DESCRIPTION	Q' TY	REMARKS
1	13200-97J60	CARBURETOR	1	
2	13236-97J20	·NOZZLE, MAIN	1	
3-1	09491-60014	·JET, MAIN (60)	1	
3-2	09491-62009	·JET, MAIN (62)	1	
3-3	09491-64003	·JET, MAIN (64)	1	
4	13371-97J00	·VALVE, NEEDLE	1	
5	13250-97J00	·FLOAT	1	
6	13254-97J00	·PIN, FLOAT	1	
7	13268-97J30	·SPRING	1	
8	13251-97J00	·GASKET	1	
9	13245-97J00	·CHAMBER, FLOAT	1	
10	13249-97J00	·GASKET	1	
11	13247-97J00	·SCREW	1	
12	13268-97J10	·SPRING	1	
13	13616-97J00	·SCREW	1	
14	13267-97J00	·SCREW	4	
15-1	09492-36L01	·JET, PILOT (36)	1	
15-2	09492-32011	·JET, PILOT (32)	1	
15-3	09492-34004	·JET, PILOT (34)	1	
16	13267-97J10	·SCREW	1	
17	09493-28L01	·JET, AIR (170)	1	
18	09493-27L01	·JET, PILOT AIR (135)	1	
19	13249-97J10	·GASKET	1	
20	13248-97J00	·PLATE	1	
21	13268-97J20	·SPRING	1	
22	13534-97J10	·SCREW	1	
23	13267-97J20	·SCREW	1	
24	13125-97J00	GASKET, CARBURETOR	1	
25	13413-97J10	ROD, CHOKE	1	
26	13436-91J00	CONNECTOR, CHOKE ROD	1	
27	13631-91J00	KNOB, CHOKE	1	
28	01547-06757	BOLT	2	

FIG.6

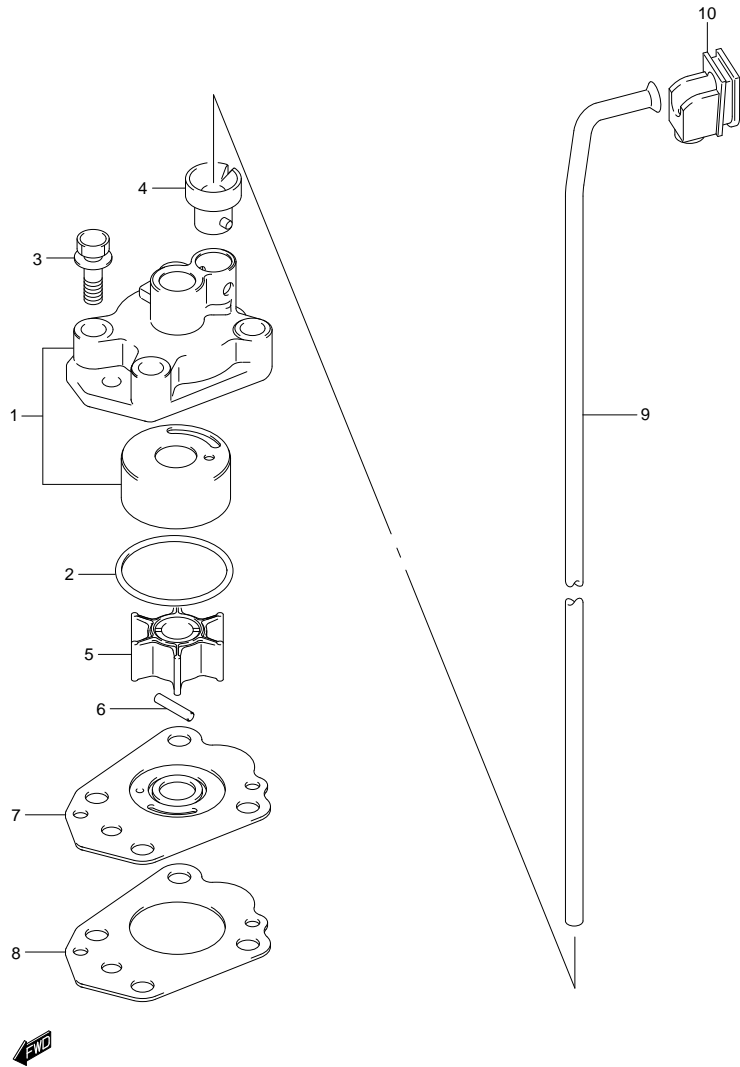


FIG.6 (1-B-7) WATER PUMP

REF NO.	PART NO.	DESCRIPTION	Q' TY	REMARKS
1	17410-97JL0	CASE, WATER PUMP	1	
2	09280-33005	O RING (D:1.9,ID:32.7)	1	
3	09116-06207	BOLT (6X30)	4	
4	17415-97J00	GROMMET, WATER PUMP CASE	1	
5	17461-97J10	IMPELLER, WATER PUMP	1	
6	09202-02006	PIN	1	
7	17471-97JL0	PANEL, PUMP CASE UNDER	1	
8	17472-97JL0	GASKET, PUMP CASE PANEL	1	
9	17561-97JL0	TUBE, WATER (S)	1	
10	17563-97J10	GROMMET, WATER TUBE UPPER	1	

FIG.7

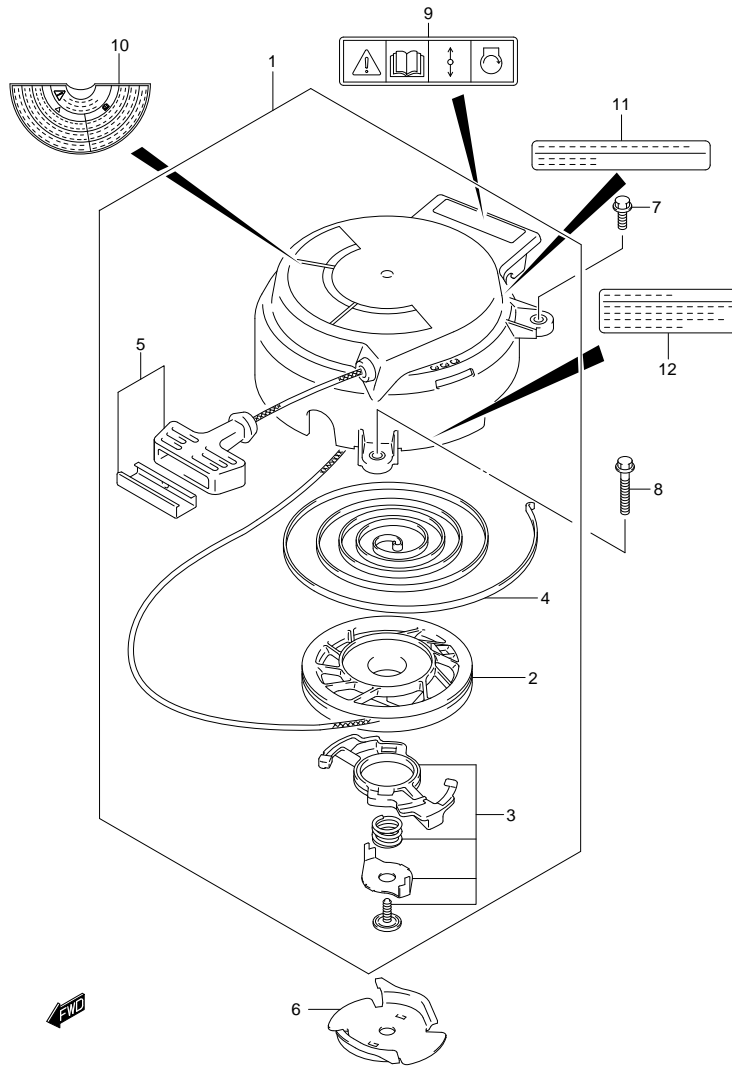


FIG.7 (1-B-8) RECOIL STARTER

REF NO.	PART NO.	DESCRIPTION	Q'TY	REMARKS
1	18100-97JMO	STARTER ASSY, RECOIL	1	
2	18120-97J00	·REEL	1	
3	18130-97J00	·RATCHET SET	1	
4	18142-04410	·SPRING, SPIRAL	1	
5	18210-97J00	·GRIP SET	1	
6	18211-97J00	PULLEY, STARTER	1	
7	01550-06207	BOLT	1	
8	01550-06357	BOLT	2	
9	69711-93E10	LABEL, S.I.G.P	1	
10	61472-94J10	LABEL, RECOIL STARTER	1	
11	61493-97J00	LABEL, CLEARANCE	1	
12	61494-97J00	LABEL, OIL	1	
13	99000-81157-50M	ROPE,L:5000	1	NOT ILLUSTRATED OPT L:5000 -> 1200

FIG.8

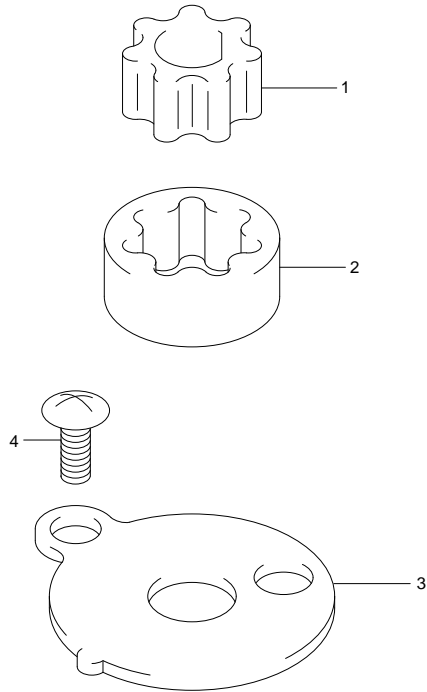


FIG.8 (1-B-9) OIL PUMP

REF NO.	PART NO.	DESCRIPTION	Q' TY	REMARKS
1	16131-91J00	ROTOR, OIL PUMP INNER	1	
2	16132-91J00	ROTOR, OIL PUMP OUTER	1	
3	16161-97J10	PLATE, OIL PUMP ROTOR	1	
4	02142-0510A	BOLT	1	

FIG.9

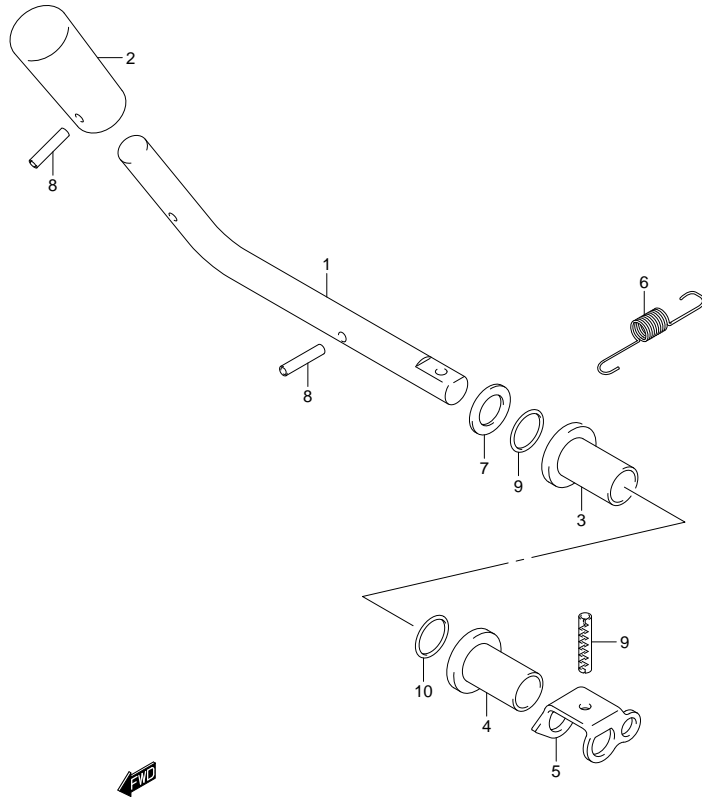


FIG.9 (1-B-10) CLUTCH LEVER

REF NO.	PART NO.	DESCRIPTION	Q' TY	REMARKS
1	21111-97J01	LEVER, CLUTCH	1	
2	21112-97J00	KNOB, CLUTCH LEVER	1	
3	21221-97J00	BUSH, CLUTCH SHAFT	1	
4	21222-97J00	BUSH, CLUTCH SHAFT NO.2	1	
5	23211-97J10	ARM, CLUTCH ROD	1	
6	23213-97J00	SPRING, CLUTCH NOTCH	1	
7	09160-08145	WASHER (8X14X1.5)	1	
8	09205-03012	SPRING	2	
9	09205-04002	SPRING	1	
10	09280-08005	O RING (D:1.7,ID:7.7)	2	

FIG.10

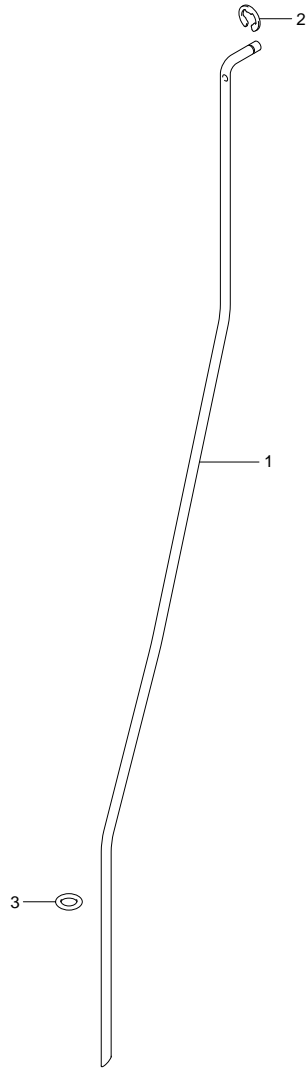


FIG.10 (1-B-11) SHIFT ROD

REF NO.	PART NO.	DESCRIPTION	Q' TY	REMARKS
1	25111-97J10	ROD, SHIFT (S)	1	
2	09383-04002	E RING	1	
3	09280-06004	O RING (D:3.5,ID:5.8)	1	

FIG.11

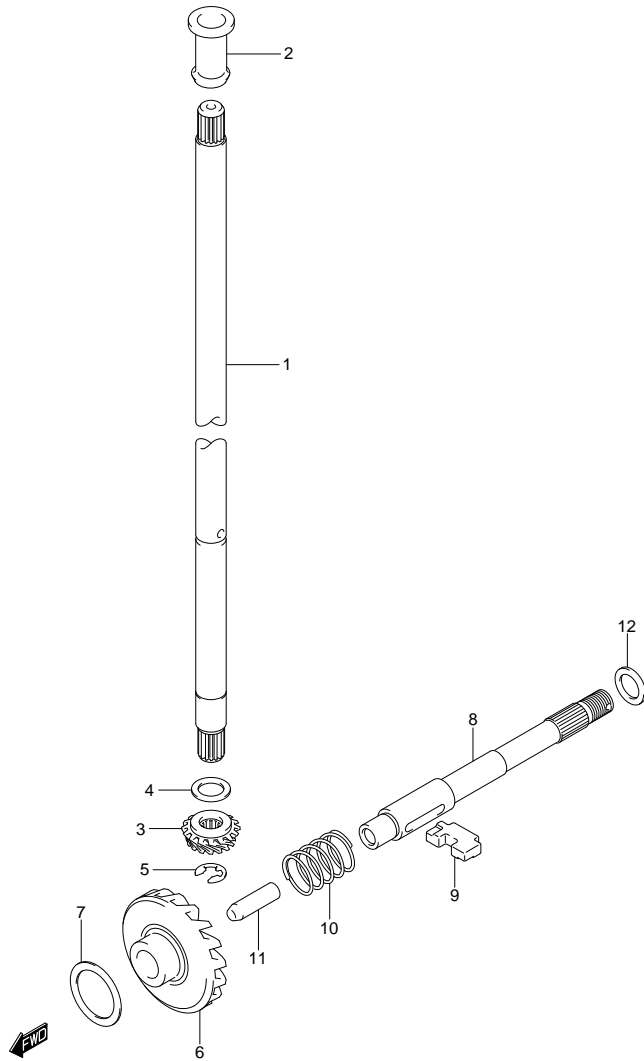


FIG.11 (1-B-12) DRIVE SHAFT

REF NO.	PART NO.	DESCRIPTION	QTY	REMARKS
1	57111-97J10	SHAFT, DRIVE (S)	1	
2	57130-91J00	BUSH, DRIVE SHAFT	1	
3	57311-97JM0	PINION	1	
4-1	09181-10015	SHIM (10X16X1.8)	1	PINION ADJ
4-2	09181-10016	SHIM (10X16X1.9)	1	
4-3	09181-10017	SHIM (10X16X2)	1	
4-4	09181-10018	SHIM (10X16X2.1)	1	
4-5	09181-10019	SHIM (10X16X2.2)	1	
5	08332-1106A	E RING	1	
6	57510-97JM0	GEAR, FORWARD	1	
7-1	09181-17022	SHIM (17X23X0.3)	1	FWD GEAR BACKUP
7-2	09181-17023	SHIM (17X23X0.4)	1	
7-3	09181-17024	SHIM (17X23X0.5)	1	
7-4	09181-17025	SHIM (17X23X0.6)	1	
8	57611-97J10	SHAFT, PROPELLER	1	
9	57621-97J10	SHIFTER, CLUTCH DOG	1	
10	59441-97J20	SPRING, RETURN	1	
11	57631-97J10	ROD, PUSH	1	
12-1	09181-12017	WASHER (12X20X1.6)	1	PROP SFT REV THRUST
12-2	09181-12018	WASHER (12X20X1.7)	1	
12-3	09181-12019	WASHER (12X20X1.8)	1	
12-4	09181-12020	WASHER (12X20X1.9)	1	
12-5	09181-12021	WASHER (12X20X2)	1	

FIG.12

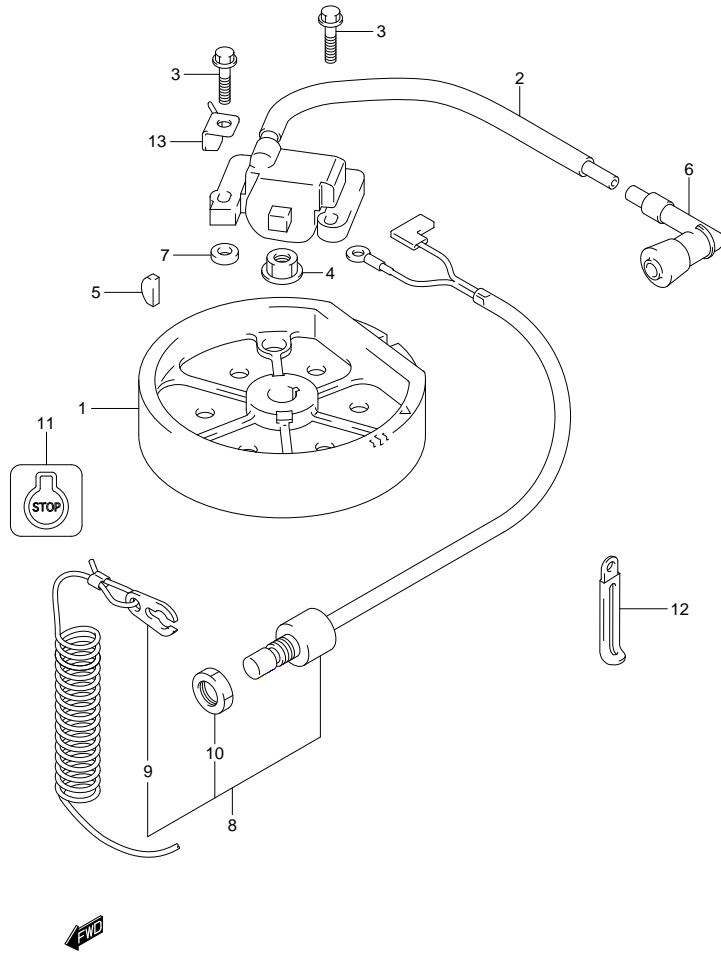


FIG.12 (1-B-13) MAGNETO

REF NO.	PART NO.	DESCRIPTION	QTY	REMARKS
1	32102-97J10	FLYWHEEL	1	
2	33410-97J10	UNIT, IGNITER	1	
3	01550-06307	BOLT	2	
4	08316-10107	NUT	1	
5	08341-31039	KEY	1	
6	33500-07H00	CAP, SPARK PLUG	1	
7	09180-06363	SPACER (6.2X12.6X6)	2	
8	37830-97J20	SWITCH ASSY, EMERGENCY	1	
9	37823-92E01	PLATE, LOCK	1	
10	37826-92E00	NUT	1	
11	37835-95D00	LABEL, STOP	1	
12	29404-93J10	CLAMP (L:65)	2	
13	19183-97J01	HOLDER, THROTTLE CABLE	1	

FIG.13

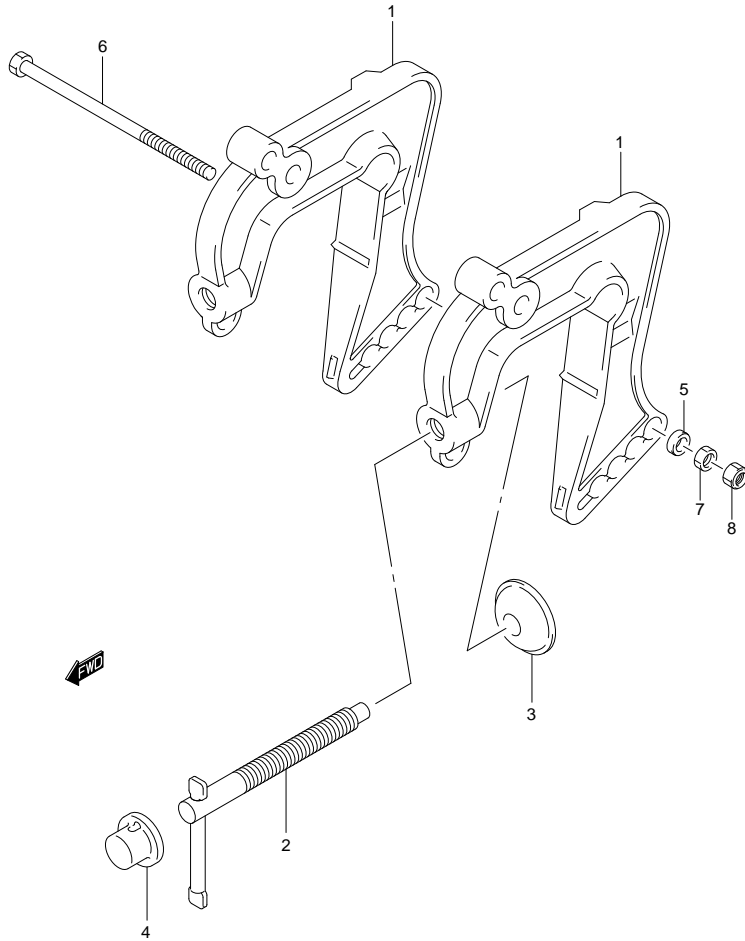


FIG.13 (1-B-14) CLAMP BRACKET

REF NO.	PART NO.	DESCRIPTION	Q' TY	REMARKS
1	41111-97J31-0EP	BRACKET, CLAMP (BLACK)	2	
2	41210-97J00	HANDLE, CLAMP	2	
3	41213-98100	PLATE, CLAMP	2	
4	41214-97J00	CAP. CLAMP SCREW	2	
5	59181-97J10	SPACER, TILT LOCK	1	
6	09101-06009	BOLT (6X115)	1	
7	29141-93J00	NUT, TILT LOCK NO.1	1	
8	09159-06079	NUT	1	

FIG.14

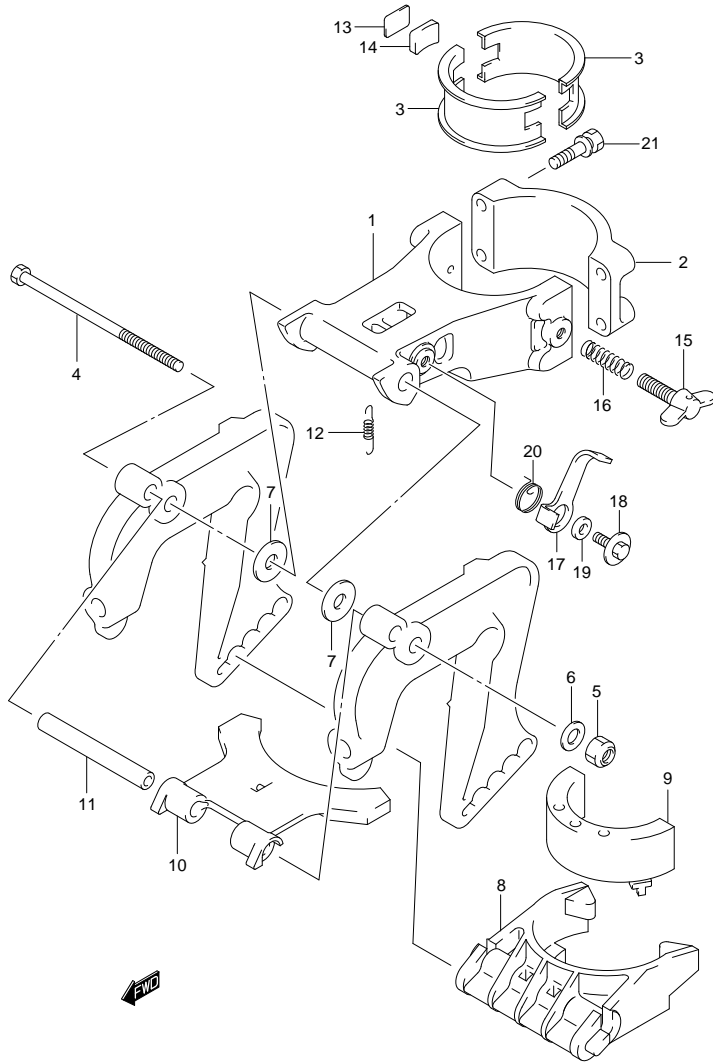


FIG.14 (1-B-15) SWIVEL BRACKET

REF NO.	PART NO.	DESCRIPTION	Q'TY	REMARKS
1	43111-97J30-0EP	BRACKET, SWIVEL PORT (BLACK)	1	
2	43121-97J30-0EP	BRACKET, SWIVEL STBD (BLACK)	1	
3	43711-97J00	BUSH, STEERING UPPER	2	
4	59111-97JL0	BOLT, SWIVEL SHAFT	1	
5	09159-08018	NUT	1	
6	09160-08091	WASHER (8.5X14X1.0)	1	
7	09160-08081	WASHER (8.5X23X1.5)	2	
8	45411-97J00	BLOCK, THRUST	1	
9	54151-97J00	MOUNT, LOWER THRUST	1	
10	43751-97J01	BRACKET, STOPPER	1	
11	43752-97J00	SHAFT, STOPPER	1	
12	59443-97J00	SPRING, STOPPER	1	
13	43415-97J10	PLATE, STEERING ADJUSTER	1	
14	43416-97J10	RUBBER, STEERING ADJUSTER	1	
15	09119-06110	BOLT (6X12)	1	
16	09440-09042	SPRING	1	
17	41221-97J10	LEVER, TILT LOCK	1	
18	09116-06127	BOLT (6X12)	1	
19	59181-97J10	SPACER, TILT LOCK LEVER	1	
20	59444-97J10	SPRING, TILT LOCK	1	
21	09116-06207	BOLT (6X30)	4	
22	43110-97J30-0EP	BRACKET ASSY, SWIVEL (BLACK)	1	OPT,NOT SHOWN

FIG.15

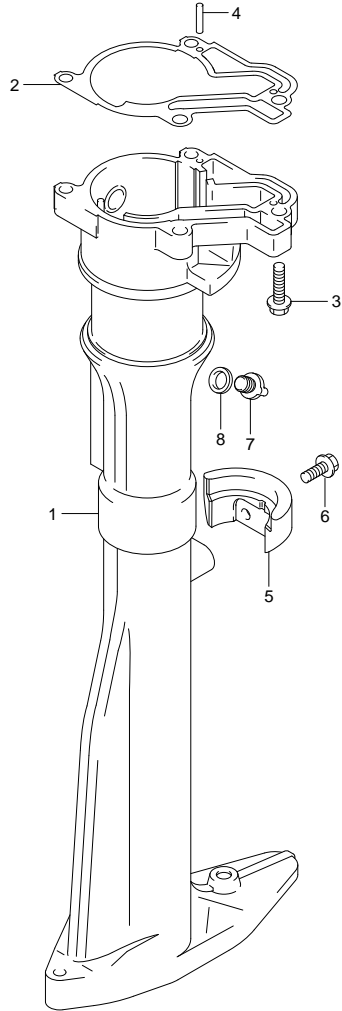


FIG.15 (1-C-2) DRIVE SHAFT HOUSING

REF NO.	PART NO.	DESCRIPTION	Q' TY	REMARKS
1	52111-97J30-0EP	HOUSING, DRIVE SHAFT (BLACK)	1	
2	52113-97J00	GASKET, DRIVE SHAFT HSG	1	
3	29116-93J00	BOLT, DRIVE SHAFT HSG	4	
4	09205-03019	SPRING	2	
5	52112-97J30-0EP	STOPPER, REV THRUST (BLACK)	1	
6	29116-93J00	BOLT, STOPPER REV THRUST	2	
7	61155-97J00	UNION, WATER INSPECTION	1	
8	59178-97J00	GASKET, WATER INSPECTION	1	

FIG.16

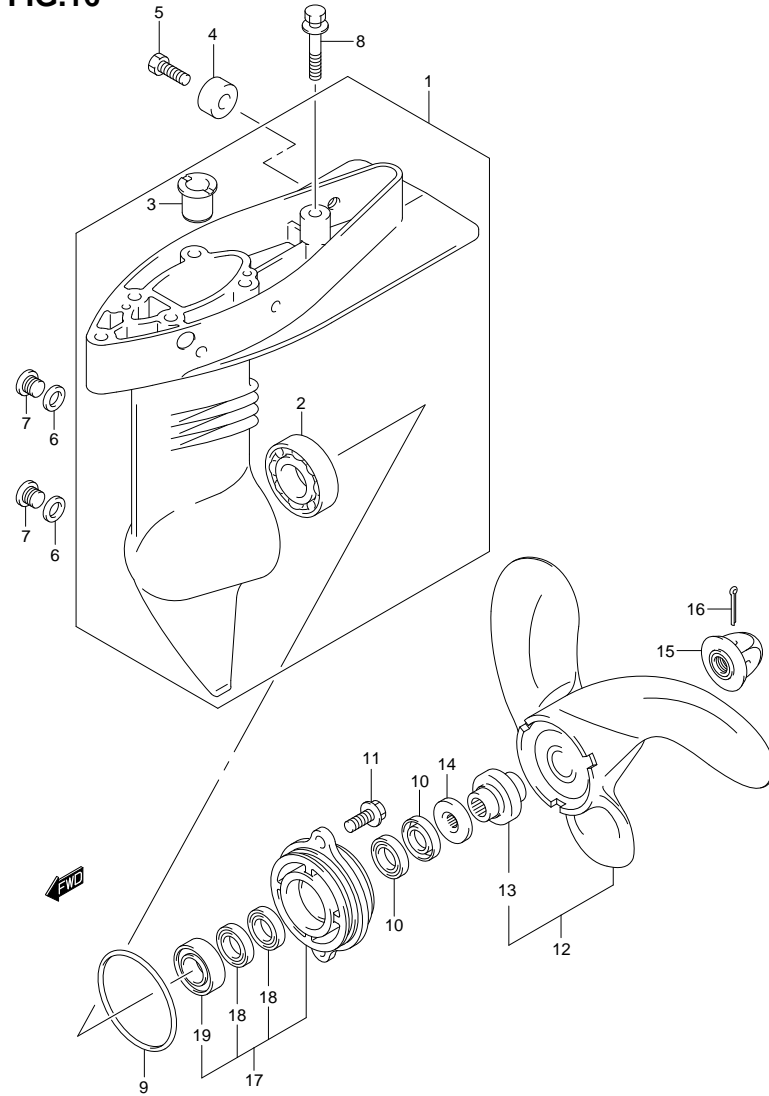


FIG.16 (1-C-3) GEAR CASE

REF NO.	PART NO.	DESCRIPTION	Q'TY	REMARKS
1	55110-97J40-0EP	CASE, GEAR (BLACK)	1	
2	09262-17019	·BEARING (17X35X8)	1	
3	59311-97J20	·BUSH, PINION	2	
4	55321-87J00	ANODE, PROTECTION	1	
5	09103-06281	BOLT (6X14)	1	
6	59178-97J00	GASKET, DRAIN PLUG	2	
7	09248-08001	PLUG	2	
8	09116-06099	BOLT (6X35)	2	
9	59291-97J00	O RING, PROP SFT BRG HOUSING	1	
10	09282-10008	OIL SEAL (10X21X4.5)	2	
11	09116-06094	BOLT (6X15)	2	
12	58110-97JA0-019	PROPELLER (3X7-1/2X6) (BLACK)	1	
13	58120-97JA0	·BUSH, PROPELLER	1	
14	57635-91JL0	STOPPER, PROPELLER BUSH	1	
15	58130-91JL0	NUT, PROPELLER	1	
16	09204-03003	COTTER PIN	1	
17	56120-97J40-0EP	HOUSING, PROP SFT BRG (BLACK)	1	
18	09282-12008	·OIL SEAL (12X24X4.5)	2	
19	09262-12001	·BEARING (12X28X8)	1	

FIG.17

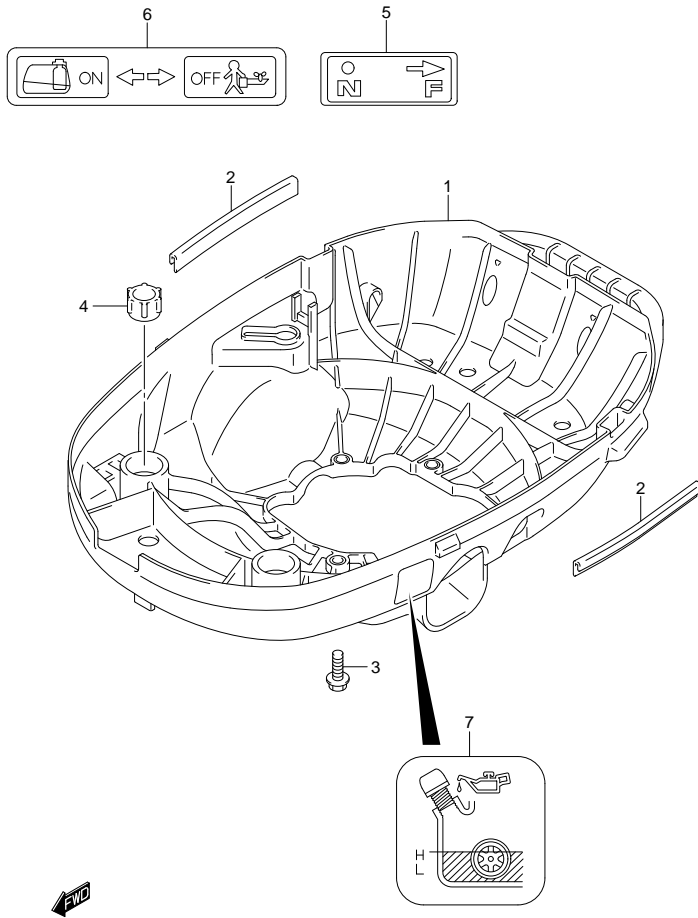


FIG.17 (1-C-4) LOWER COVER

REF NO.	PART NO.	DESCRIPTION	Q' TY	REMARKS
1	61110-97J01-YR9	COVER, LOWER (GRAY)	1	
2	61135-97J00	CUSHION, LOWER COVER	2	
3	29116-93J00	BOLT (6X20)	4	
4	61151-91J01	CUSHION, FUEL TANK HOLDER	2	
5	21131-97J20	MARK, CLUTCH SHIFT (S)	1	
6	61211-97J00	MARK, FUEL COCK (S)	1	
7	61212-97J00	MARK, OIL LEVEL (S)	1	

FIG.18

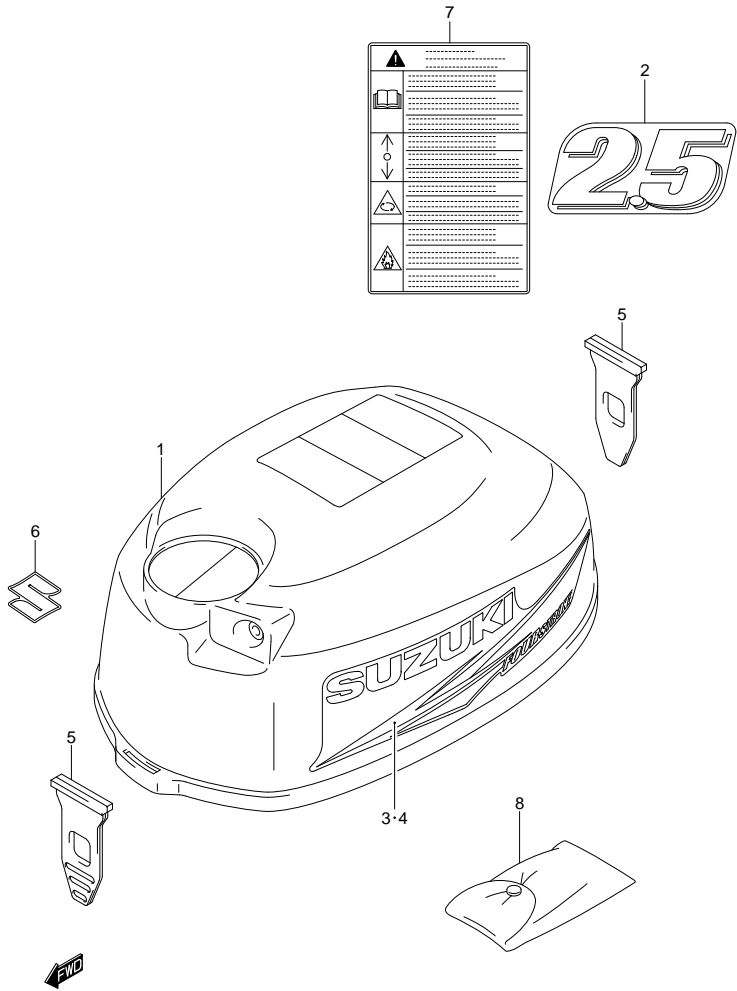


FIG.18 (1-C-5) ENGINE COVER

REF NO.	PART NO.	DESCRIPTION	Q'TY	REMARKS
1	61411-97J10-YR9	COVER, ENGINE UPPER (GRAY)	1	
2	61435-97J30	MARK, EMBLEM REAR (DF2.5)	1	
3	61443-97J20	STRIPE, ENGINE COVER STBD	1	
4	61453-97J20	STRIPE, ENGINE COVER PORT	1	
5	61611-97J00	FASTENER, ENGINE COVER	2	
6	68111-99J00	EMBLEM, "S"	1	
7	61458-97J30	LABEL, ENGINE COVER	1	
8	09800-01007	TOOL ASSY	1	

FIG.19

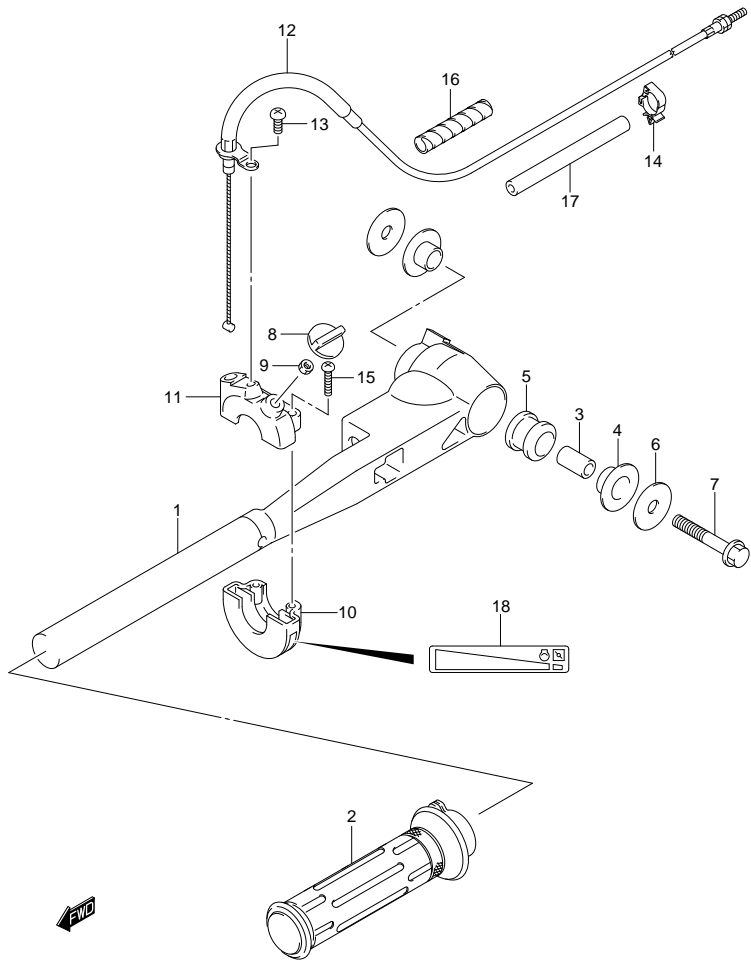


FIG.19 (1-C-6) TILLER HANDLE

REF NO.	PART NO.	DESCRIPTION	Q'TY	REMARKS
1	63111-97J20-0EP	HANDLE, TILLER (BLACK)	1	
2	63210-97J00	GRIP, THROTTLE	1	
3	59181-97J00	SPACER, TILLER HANDLE	1	
4	59315-97J00	BUSH, TILLER HANDLE	2	
5	63116-97J00	MOUNT, TILLER HANDLE	1	
6	09160-08152	WASHER (8.5X28X1.5)	2	
7	09116-08138	BOLT (8X40)	1	
8	63244-97J00	KNOB, THROTTLE ADJUST	1	
9	09140-05005	NUT	1	
10	57121-09G00	CASE, THROTTLE UPPER	1	
11	67821-97J00	CASE, THROTTLE LOWER	1	
12	63610-97J00	CABLE ASSY, THROTTLE	1	
13	02112-05127	SCREW	1	
14	23915-78A20	CLAMP, THROTTLE CABLE	2	
15	59125-97J00	SCREW, THROTTLE CABLE	2	
16	33833-91J00	TUBE, THROTTLE CABLE (6X8X250)	1	L:250→50
17	09352-90133-600	HOSE (9X13X600)	1	L:600→90
18	69714-97J01	MARK, HANDLE GRIP	1	

FIG.20

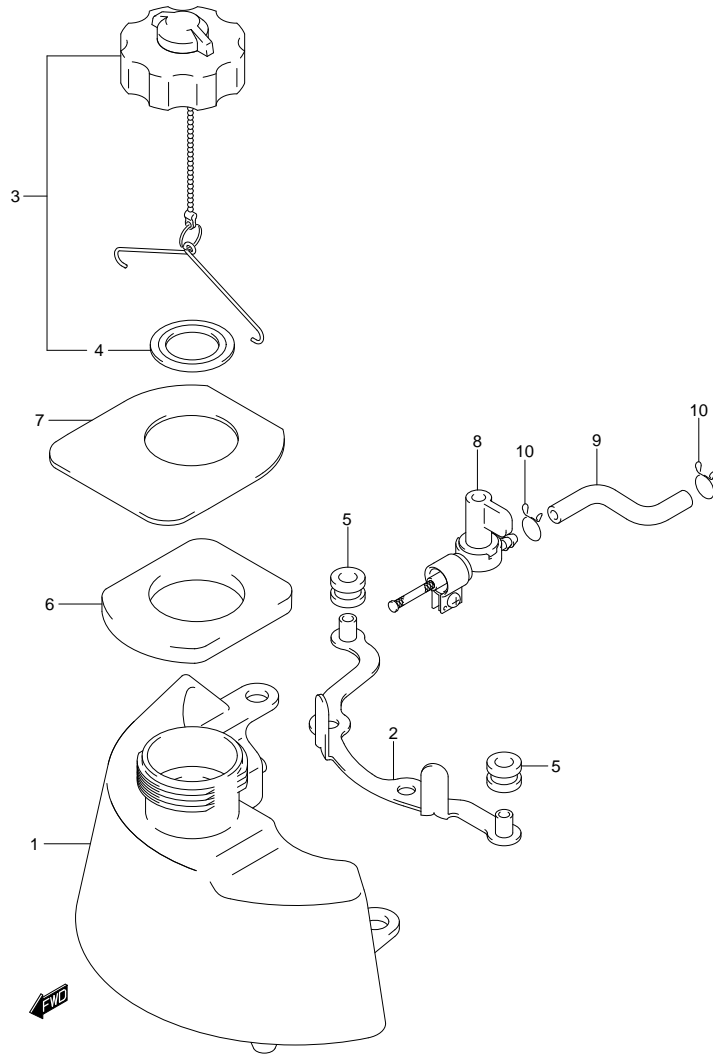


FIG.20 (1-C-7) FUEL TANK

REF NO.	PART NO.	DESCRIPTION	Q' TY	REMARKS
1-1	65110-97J20	TANK, FUEL	1	UP TO VIN.211821
1-2	65110-97J20	TANK,FUEL	1	FROM VIN.211822
2	65260-97J00	BRACKET, FUEL TANK	1	
3-1	65510-91J01	CAP ASSY, FUEL TANK	1	UP TO VIN.211821
3-2	65110-91JL0	CAP ASSY, FUEL TANK	1	FROM VIN.211822
4	09168-32001	GASKET (32X48X2.5)	1	
5	09320-09039	CUSHION	2	
6	65281-97J10	GROMMET, FUEL TANK	1	
7	65284-97J11	RUBBER, FUEL TANK GROMMET	1	
8	66100-97JL0	COCK ASSY, FUEL	1	
9	15191-97J11	HOSE, FUEL (COCK TO CARB)	1	
10	59412-91J00	CLIP, FUEL HOSE	2	
11	99011-97J07-055	MANUAL, OWNER'S (ARABIC)	1	NOT ILLUSTRATED

PART NO.	FIG. NO. -REF. NO.	PART NO.	FIG. NO. -REF. NO.	PART NO.	FIG. NO. -REF. NO.
1 0 0 0 0		13111-97J00	4 - 1	18142-04410	7 - 4
		13119-97J00	4 - 2	18210-97J00	7 - 5
		13124-97J00	4 - 3	18211-97J00	7 - 6
		13125-97J00	5 - 24	19183-97J01	12 - 13
		13200-97J60	5 - 1		
11110-97J10	1 - 1	13236-97J20	5 - 2	2 0 0 0 0	
11118-97JL0	1 - 4	13245-97J00	5 - 9		
11119-97JL0	1 - 5	13247-97J00	5 - 11		
11141-97JL0	1 - 2	13248-97J00	5 - 20		
11171-97J10	1 - 6	13249-97J00	5 - 10		
11173-97J00	2 - 22	13249-97J10	5 - 19	21111-97J01	9 - 1
11174-97J00	2 - 25	13250-97J00	5 - 5	21112-97J00	9 - 2
11179-97J00	2 - 24	13251-97J00	5 - 8	21131-97J20	17 - 5
11189-97JL0	1 - 7	13254-97J00	5 - 6	21221-97J00	9 - 3
11200-97J00	2 - 1	13267-97J00	5 - 14	21222-97J00	9 - 4
11300-97J00	2 - 4	13267-97J10	5 - 16	23211-97J10	9 - 5
11351-97JL0	2 - 7	13267-97J20	5 - 23	23213-97J00	9 - 6
11382-97J00	2 - 12	13268-97J10	5 - 12	23915-78A20	19 - 14
11431-97J11	2 - 28	13268-97J20	5 - 21	25111-97J10	10 - 1
11432-97JL0	2 - 29	13268-97J30	5 - 7	29116-93J00	15 - 3
11452-91J00	2 - 26	13371-97J00	5 - 4		15 - 6
11971-91J01	2 - 6	13413-97J10	5 - 25		17 - 3
12100-97J00-050	3 - 28	13436-91J00	5 - 26	29141-93J00	13 - 7
12111-97J10-0B0	3 - 1	13534-97J10	5 - 22	29404-93J10	12 - 12
12140-97J00	3 - 2	13616-97J00	5 - 13		
12140-97J00-050	3 - 29	13631-91J00	5 - 27	3 0 0 0 0	
12151-97J00	3 - 3	13710-97J00	4 - 7		
12160-97J00-0A0	3 - 5	13810-97J00	4 - 6		
12163-92F00	3 - 6	15191-97J11	20 - 9		
12220-97J02	3 - 7	16131-91J00	8 - 1		
12242-97J00	3 - 8	16132-91J00	8 - 2	32102-97J10	12 - 1
12710-97J00	3 - 10	16161-97J10	8 - 3	33410-97J10	12 - 2
12742-97J10	3 - 11	17410-97JL0	6 - 1	33500-07H00	12 - 6
12743-97J00	3 - 12	17415-97J00	6 - 4	33833-91J00	19 - 16
12840-97J10	3 - 13	17461-97J10	6 - 5	37823-92E01	12 - 9
12842-22G10	3 - 14	17471-97JL0	6 - 7	37826-92E00	12 - 10
12843-27A00	3 - 15	17472-97JL0	6 - 8	37830-97J20	12 - 8
12845-97J00	3 - 18	17561-97JL0	6 - 9	37835-95D00	12 - 11
12847-22G00	3 - 19	17563-97J10	6 - 10		
12894-97J00	3 - 17	17670-91J00	2 - 18		
12911-97JL0	3 - 22	17681-97J20	2 - 19	4 0 0 0 0	
12915-97JL0	3 - 23	17685-97J00	2 - 20		
12921-97JL0	3 - 24	18100-97JM0	7 - 1		
12931-97J00	3 - 26	18120-97J00	7 - 2		
12932-05C00	3 - 27	18130-97J00	7 - 3		

PART NO.	FIG. NO. -REF. NO.	PART NO.	FIG. NO. -REF. NO.	PART NO.	FIG. NO. -REF. NO.
41111-97J31-OEP	13 - 1	59181-97J10	13 - 5	65284-97J11	20 - 7
41210-97J00	13 - 2		14 - 19	65510-91J01	20 - 3
41213-98100	13 - 3	59291-97J00	16 - 9	66100-97JL0	20 - 8
41214-97J00	13 - 4	59295-97J00	2 - 2	67821-97J00	19 - 11
41221-97J10	14 - 17	59295-97J10	2 - 10	68111-99J00	18 - 6
43110-97J30-OEP	14 - 22	59295-97J20	2 - 11	69711-93E10	7 - 9
43111-97J30-OEP	14 - 1	59311-97J20	16 - 3	69714-97J01	19 - 18
43121-97J30-OEP	14 - 2	59315-97J00	19 - 4		
43415-97J10	14 - 13	59382-97J00	3 - 4		
43416-97J10	14 - 14	59412-91J00	20 - 10		
43711-97J00	14 - 3	59441-97J20	11 - 10		
43751-97J01	14 - 10	59443-97J00	14 - 12		
43752-97J00	14 - 11	59444-97J10	14 - 20		
45411-97J00	14 - 8				
				9 0 0 0 0	
				99000-81157-50M	7 - 13
				99011-97J07-055	20 - 11
5 0 0 0 0		6 0 0 0 0			
52111-97J30-OEP	15 - 1	61110-97J01-YR9	17 - 1		
52112-97J30-OEP	15 - 5	61135-97J00	17 - 2		
52113-97J00	15 - 2	61151-91J01	17 - 4		
54151-97J00	14 - 9	61155-97J00	15 - 7		
55110-97J40-OEP	16 - 1	61211-97J00	17 - 6		
				0 0 0 0 0	
55321-87J00	16 - 4	61212-97J00	17 - 7	01547-05107	1 - 8
55321-95J00	2 - 16	61411-97J10-YR9	18 - 1	01547-06757	5 - 28
56120-97J40-OEP	16 - 17	61435-97J30	18 - 2	01550-06207	2 - 21
57111-97J10	11 - 1	61443-97J20	18 - 3		7 - 7
57121-09G00	19 - 10	61453-97J20	18 - 4	01550-06257	2 - 9
57130-91J00	11 - 2	61458-97J30	18 - 7	01550-06307	12 - 3
57311-97JMO	11 - 3	61472-94J10	7 - 10	01550-06357	7 - 8
57510-97JMO	11 - 6	61493-97J00	7 - 11	02112-05127	19 - 13
57611-97J10	11 - 8	61494-97J00	7 - 12	02112-0612A	2 - 27
57621-97J10	11 - 9	61611-97J00	18 - 5	02142-0510A	8 - 4
57631-97J10	11 - 11	63111-97J20-OEP	19 - 1	02142-06127	2 - 23
57635-91JL0	16 - 14	63116-97J00	19 - 5	04221-05109	2 - 8
58110-97JA0-019	16 - 12	63210-97J00	19 - 2	07120-06257	4 - 4
58120-97JA0	16 - 13	63244-97J00	19 - 8	07120-06357	4 - 5
58130-91JL0	16 - 15	63610-97J00	19 - 12	08211-17241	3 - 9
59111-97JL0	14 - 4	65110-91JL0	20 - 3	08316-10107	12 - 4
59125-97J00	19 - 15	65110-97J20	20 - 1	08322-0104A	3 - 21
59178-97J00	15 - 8		20 - 1	08332-1106A	11 - 5
	16 - 6	65260-97J00	20 - 2	08341-31039	12 - 5
59181-97J00	19 - 3	65281-97J10	20 - 6	09101-06009	13 - 6

DF2.5 P01 012

PART NO.	FIG. NO. -REF. NO.	PART NO.	FIG. NO. -REF. NO.	PART NO.	FIG. NO. -REF. NO.
09103-06281	16 - 5	09262-17019	16 - 2		
09116-06094	16 - 11	09262-17023	2 - 3		
09116-06099	16 - 8		2 - 5		
09116-06127	14 - 18	09280-06004	10 - 3		
09116-06207	6 - 3	09280-08005	9 - 10		
	14 - 21	09280-15007	2 - 13		
09116-08138	19 - 7	09280-33005	6 - 2		
09119-06110	14 - 15	09282-10008	16 - 10		
09126-05011	2 - 17	09282-12008	16 - 18		
09140-05005	19 - 9	09289-04006	3 - 25		
09159-06079	13 - 8	09320-09039	20 - 5		
09159-08018	14 - 5	09352-90133-600	19 - 17		
09160-08081	14 - 7	09383-04002	10 - 2		
09160-08091	14 - 6	09440-09042	14 - 16		
09160-08145	9 - 7	09482-00406	1 - 9		
09160-08152	19 - 6	09491-60014	5 - 3		
09168-10022	2 - 14	09491-62009	5 - 3		
09168-32001	20 - 4	09491-64003	5 - 3		
09180-06348	4 - 8	09492-32011	5 - 15		
09180-06363	12 - 7	09492-34004	5 - 15		
09181-10015	11 - 4	09492-36L01	5 - 15		
09181-10016	11 - 4	09493-27L01	5 - 18		
09181-10017	11 - 4	09493-28L01	5 - 17		
09181-10018	11 - 4	09800-01007	18 - 8		
09181-10019	11 - 4				
09181-12017	11 - 12				
09181-12018	11 - 12				
09181-12019	11 - 12				
09181-12020	11 - 12				
09181-12021	11 - 12				
09181-17022	11 - 7				
09181-17023	11 - 7				
09181-17024	11 - 7				
09181-17025	11 - 7				
09202-02006	6 - 6				
09204-03003	16 - 16				
09205-03012	9 - 8				
09205-03019	15 - 4				
09205-04002	9 - 9				
09206-08008	1 - 3				
09248-08001	16 - 7				
09248-10008	2 - 15				
09261-04005	3 - 20				
09261-04017	3 - 16				
09262-12001	16 - 19				

SUZUKI DF2.5 PARTS CATALOGUE

1ST EDITION

PUBLISHED IN MAY 2011

2011 **SUZUKI MOTOR CORPORATION** All rights reserved.

No part of this document may be modified reproduced, distributed, sold or transmitted in any form or by any means, electronic or mechanical, for any purpose, without the express written permission of Suzuki Motor Corporation.

SUZUKI MOTOR CORPORATION

FIELD QUALITY ASSURANCE GROUP

MOTORCYCLE QUALITY ASSURANCE DEPARTMENT

QUALITY CONTROL

300 TAKATUKA, MINAMI, HAMAMATU, JAPAN

SUZUKI MOTOR CORPORATION

PRINTED IN JAPAN

9900B-45233