



BF2Dx
(SCD)



BF2Dx
(SCHD)

FOREWORD INDEX

1

ENGINE GROUP

2

FRAME GROUP

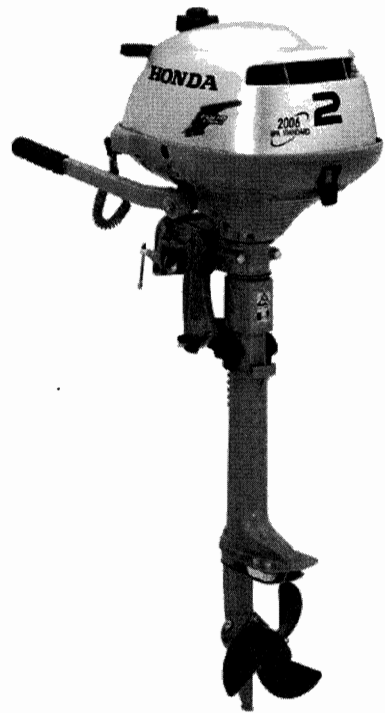
3

PART NUMBER INDEX

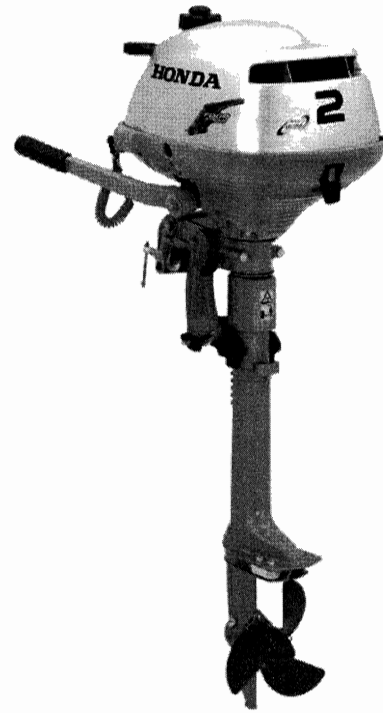
4

PART NAME INDEX

5



BF2D2



BF2D4

Instruction for use of parts catalogue

- **This parts catalogue was prepared based on the latest information available as of July 01, 2003.**
- See the parts catalogue news for any revision that is made after July 01, 2003.
- **Always specify the part number when ordering a part.**
- Check the model, type, serial numbers, color, maker, and the size as needed before ordering a part.
- Note that the illustrations (part drawings) can differ from the actual parts in shape. They are given just to help you to refer to the parts.
- **When modifications or additions to this parts catalogue are made, a revised edition will be issued at an appropriate time, with successively progressing revision numbers on the cover. We recommend obtaining such revisions in order to keep your parts catalogue up-to-date at all times. To check whether a parts catalogue revision has been issued, please contact your Honda distributor.**

Initial version issue date July 20, 1998
Honda Motor Co., Ltd.

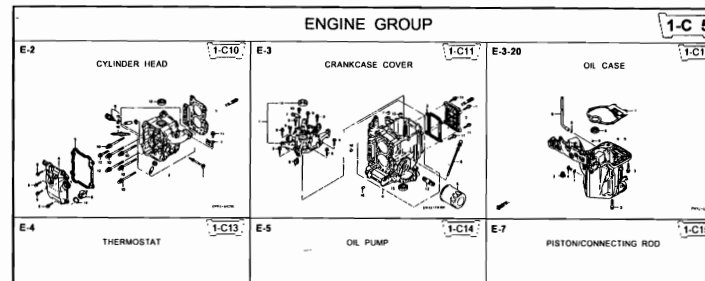
CONTENTS

	Page	Address No.
● How to refer to the part information	2	B 2 1
● Part catalogue structure	3	B 3
● When the parts were revised	4	B 4
● Abbreviations used in the parts catalogue.....	4	B 4
● How to check the part block and serial numbers.....	5	B 5
● Models, parts catalogue codes and applicable serial numbers	6	B 6
● Features of each type.....	10	B10
● Fuel hose, general purpose hoses and vinyl hose.....	12	B12
● How to use the flat rate time (F.R.T.)	13	B13
● Illustrated index	15	B15
● ENGINE GROUP.....	18	D 1 2
● FRAME GROUP.....	39	F 1 3
● PART NO. INDEX.....	54	G 1 4
● PART NAME INDEX.....	56	H 1 5



How to refer to the part information

A Reference with "Illustrated index"



B Reference with "Part number index"

PART NO. INDEX

Part Number	Address	Page	Ref.	Part Number	Address	Page	Ref.
05000				15212-ZW9-000	1-C14	3C	
				15220-ZW9-003	1-C14	3C	
06316-ZW9-000	1-69	88	1	15332-ZW9-000	1-E8	55	
				15332-ZW9-A30	1-E11	5E	
11000				15400-PFB-004	1-C11	27	
				15422-ZW9-000	1-C14	3C	
11300-ZW9-405	1-C11	27	1	15473-881-000	1-C14	3C	
11300-ZW9-406	1-C11	27	1	15474-ZW9-000	1-C14	3C	
11340-ZW9-000	1-C11	27	2	15611-921-000	1-C10	2E	
11342-ZW9-000	1-C11	27	3	15655-ZW9-000	1-C11	27	
11381-ZW9-003	1-C12	28	1				
				16000			
12000				16010-ZV4-005	1-D4	3E	
12000-ZW9-405ZA	1-C11	27	4	16011-ZV4-005	1-D4	3E	
12155-ZV4-A00	1-C13	29	1	16013-ZW9-003	1-D4	3E	
12166-ZW9-000	1-C10	26	1	16016-ZW9-003	1-D4	3E	
12209-GB4-681	1-C16	32	1	16016-ZW9-721	1-D4	3E	
12210-ZW9-405ZA	1-C10	26	2	16023-ZW9-003	1-D4	3E	
12216-ZE2-300	1-E8	35	1	16024-ZV4-650	1-D4	3E	
	1-E11	38	1	16028-ZV4-650	1-D4	3E	

C Reference with "Part name index"

PART NAME INDEX

Part name	Address	Page	Ref.
[A]			BOLT ,
ABSORBER , FUEL	1-E15	62	5
ARMATURE COMP.	1-D11	43	7
ARM COMP. , LINK JOINT	1-G6	85	18
ARM COMP. , SHIFT LINK	1-G6	85	14
ARM COMP. , TILT	1-F15	79	20
ARM , FUEL PUMP ROCKER	1-C16	32	4
ARM , REVERSE LOCK	1-F15	79	18
ARM , SHIFT LINK	1-F11	74	7
ARM , STOPPER	1-D1	33	12
ARM , THROTTLE REMOTE	1-F11	74	6
ARM , VALVE ROCKER	1-C16	32	3
[B]			
BAG , TOOL , 160MM	1-G5	84	10
BAND	1-G6	86	37
BAND B1 , WIRE	1-F6	69	1
BAND , CORD	1-F3	67	18
BAND , TUBE CLIP , 11MM	1-E15	63	20
BAND , TUBE CLIP , 12.5MM	1-E15	63	19

Address No. 1-C10

E-2 CYLINDER HEAD

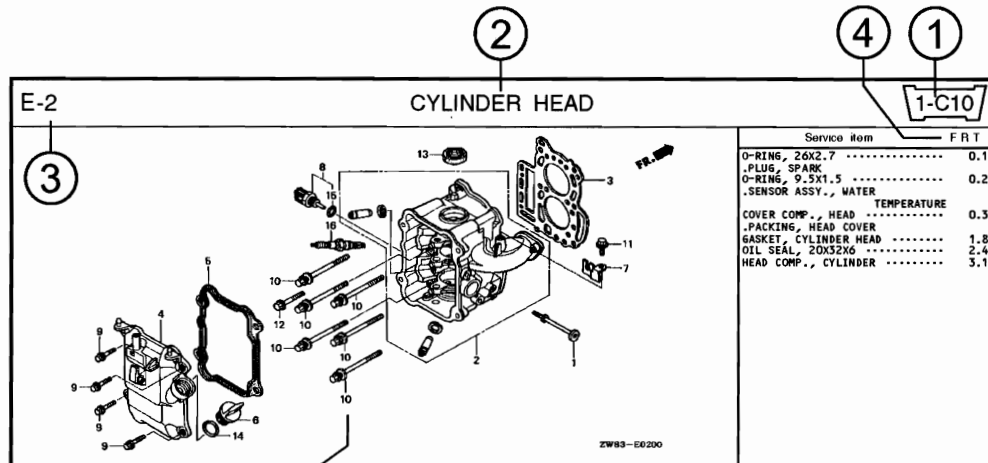
Block No.

Ref No.

Ref No	Part No	Description	Reqd QTY						Serial No	Parts catalogue code
			BF	BFP	BF	BFP	BF	BFP		
1	12166-ZW9-000	STOPPER, ENGINE SIDE	2	2	2	2	2			
2	12210-ZW9-000ZA	HEAD COMP., CYLINDER	1	1	1	1	1			
3	12251-ZW9-003	GASKET, CYLINDER HEAD	1	1	1	1	1			
4	12310-ZW9-000	COVER COMP., HEAD	1	1	1	1	1			
5	12312-ZW9-000	PACKING, HEAD COVER	1	1	1	1	1			
6	15611-921-000	CAP, OIL (NO GAUGE)	1	1	1	1	1			
7	16617-ZW9-000	HOLDER, CABLE	1	1	1	1	1	SC_S6		
	16617-ZW9-010		1	1	1	1	1	1001800 LHC_LHD		
			1	1	1	1	1	1001801	LHC_LHD	
8	35673-ZW5-003	SENSOR ASSY., WATER TEMPERATURE	1	1	1	1	1			
9	90003-ZW9-000	BOLT, FLANGE, 6X22	4	4	4	4	4			
10	90007-ZW9-003	BOLT, FLANGE, 8X83	6	6	6	6	6			
11	90011-ZW9-000	BOLT, FLANGE, 6X14 (CT200)	1	1	1	1	1			
12	90020-ZW9-000	BOLT, FLANGE, 8X40	2	2	2	2	2			
13	91202-KJ9-003	OIL SEAL, 20X32X6	1	1	1	1	1			
14	91301-805-000	O-RING, 26X2.7	1	1	1	1	1			
15	91307-PK2-005	O-RING, 9.5X1.5 (HONDA KIKAKI)	1	1	1	1	1			
16	98059-55916	PLUG, SPARK (CR5EH-9)	2	2	2	2	2			
	98059-55926	PLUG, SPARK (U16FER9)	2	2	2	2	2			

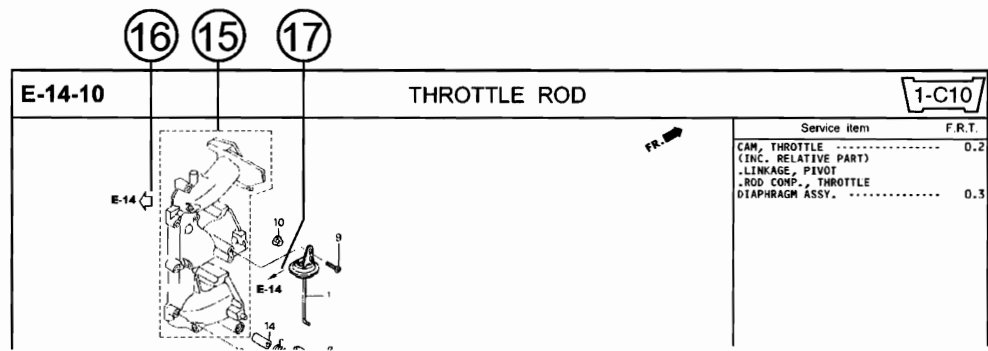
Page No. 2000.09.20 E

Part catalogue structure



Service item	F.R.T.
O-RING, 26X2.7	0.1
.PLUG, SPARK	0.2
O-RING, 9.5X1.5	0.2
.SENSOR ASSY., WATER	0.3
COVER COMP., HEAD TEMPERATURE	0.3
.PACKING, HEAD COVER	1.8
GASKET, CYLINDER HEAD	2.4
OIL SEAL, 20X32X6	3.1
HEAD COMP., CYLINDER	

Ref No	Part No	Description	Reqd QTY						Serial No	Parts catalogue code
			BF 99D1	BFP 99D1	BF 10D1	BFP 10D1	BF 16B1	BFP 16B1		
1	12166-ZW9-000	STOPPER, ENGINE SIDE	2	2	2	2	2			
2	12210-ZW9-000ZA	HEAD COMP., CYLINDER								
3	12251-ZW9-003	GASKET, CYLINDER HEAD	1	1	1	1	1			
4	12310-ZW9-000	COVER COMP., HEAD	1	1	1	1	1			
5	12312-ZW9-000	PACKING, HEAD COVER	1	1	1	1	1			
6	15611-921-000	CAP, OIL (NO GAUGE)	1	1	1	1	1			
7	16617-ZW9-000	HOLDER, CABLE	1	1	1	1	1	SC,SG		
	16617-ZW9-010		1	1	1	1	1	1001800 LHC,LHD		



Service item	F.R.T.
CAM, THROTTLE (INC. RELATIVE PART)	0.2
.LINKAGE, PIVOT	
.ROD COMP., THROTTLE	0.3
DIAPHRAGM ASSY.	

- ① **Address number**
 - Address No. is provided (in place of the page No.) to help you refer to the part with the part No. or part name.
- ② **Block title** ③ **Block number**
- ④ **Service item/Flat rate time**
- ⑤ **Reference number**
 - Title number marked with the parenthesis or parentheses indicates that it continues from the previous page.
- ⑥ **Part number** ⑦ **Honda color code**
- ⑧ **Description**
- ⑨ **Assemblies**
 - Sections framed with broken lines in the exploded view drawings are available as complete assemblies. (Their individual parts can also be obtained.)
- ⑩ **Color description**
- ⑪ **Note**
 - Notes are shown with the parentheses in the part name column.
- ⑫ **Required quantity**
 - Required QTY shown in the parenthesis or parentheses indicates the optional part.
 - Required QTY marked with "N" Indicates the optional part that should be selected as needed.
 - Required QTY indicates the number of the part used in the block.
- ⑬ **Serial number**
- ⑭ **Type**
 - When the type column is blank, it indicates that the part is applicable to all types.
 - As the type of the actual unit may differ from the "parts catalogue, type" please refer to "Models, types and applicable serial numbers" for confirmation.
- ⑮ **Parts enclosed in a dotted line**
 - Parts enclosed within a dotted line are covered in a different block.
- ⑯ **Hollow arrow**
 - A hollow arrow indicates the block No. for the parts enclosed within a dotted line.
- ⑰ **Solid arrow**
 - A solid arrow indicates the block No. the part in question is connected to.



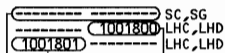
When the parts were revised



Be sure to check the serial number!!



Ref. No.	Part No.	Description	Reqd. QTY						Serial No.
			BF 99D1	BFP 99D1	BF 10D1	BFP 10D1	BF 10B1	BFP 10B1	
1	12166-ZW9-000	STOPPER, ENGINE SIDE	2	2	2	2	2	2	
2	12210-ZW9-000ZA	HEAD COMP., CYLINDER *NH8*	1	1	1	1	1	1	
3	12251-ZW9-003	GASKET, CYLINDER HEAD	1	1	1	1	1	1	
4	12310-ZW9-000	COVER COMP., HEAD	1	1	1	1	1	1	
5	12312-ZW9-000	PACKING, HEAD COVER	1	1	1	1	1	1	
6	15611-921-000	CAP, OIL (NO GAUGE)	1	1	1	1	1	1	
7	16617-ZW9-000	HOLDER, CABLE	1	1	1	1	1	1	
	16617-ZW9-010		1	1	1	1	1	1	



The number has been used from the initial model without revision.

When shown at the left side, it is applicable to the models of No.1001801 and the subsequent numbers.

When shown at the right side, it is applicable to the models up to No.1001800.

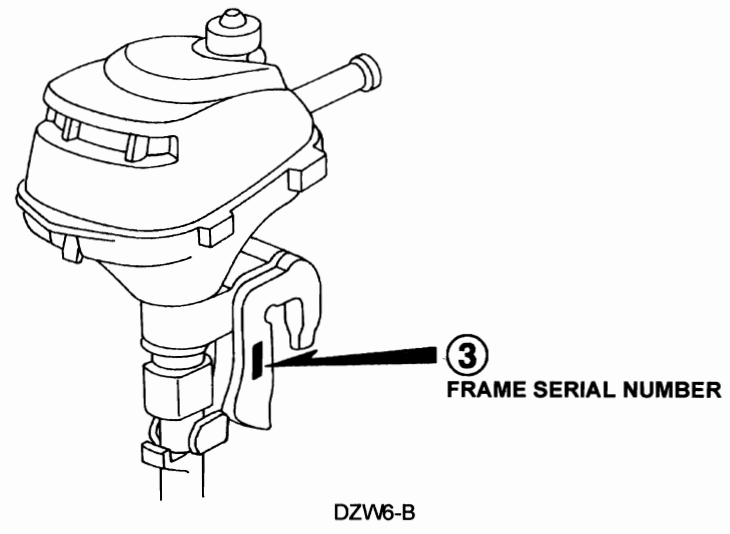
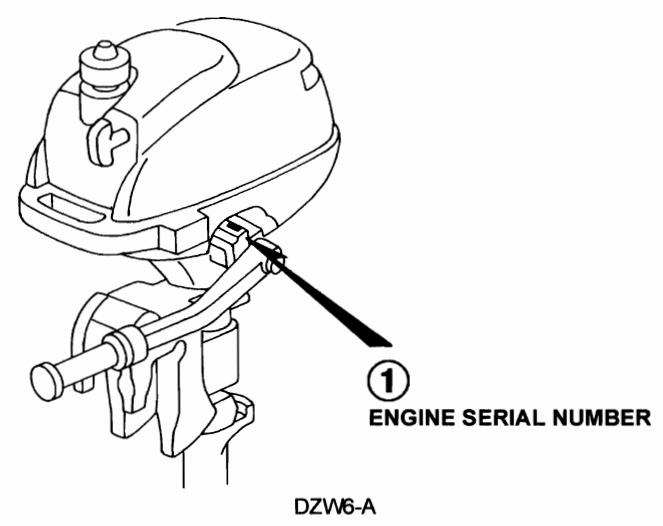
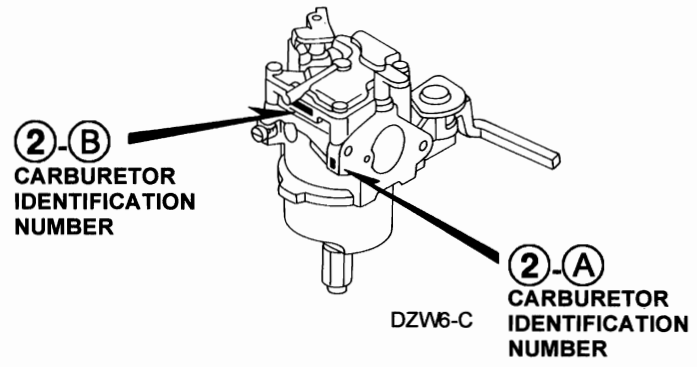
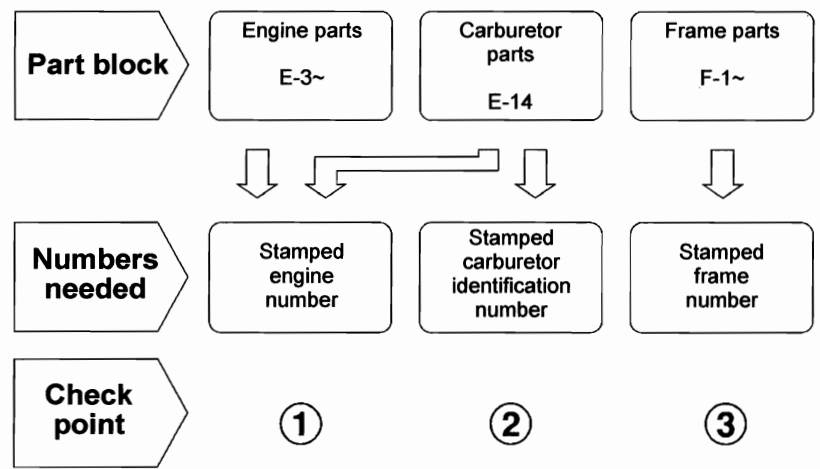
Abbreviations used in the parts catalogue

• The following abbreviations are used in the parts name column.

- A Ampere
- A.C. Alternating current
- ASSY. Assembly
- AT. Automatic transmission
- C.D.I. Capacitive discharge ignition
- COMP. ... Complete
- D.C. Direct current
- EX. Exhaust
- G.F.C.I ... Ground fault circuit interruptor
- HEX. Hexagonal
- H.S.T. Hydrostatic transmission
- FR.Front
- IN.Inlet
- L (100L) .Link (100 Links)
- L.Left
- MMMillimeter
- MT.Manual Transmission
- P.T.O.Power take off
- R.Right
- RR.Rear
- STD.Standard
- T (22T) ...Tooth (22 Teeth)
- V Volt
- WWatt

How to check the part block and serial numbers

1



Models, parts catalogue codes and applicable serial numbers

- Models, parts catalogue codes and applicable serial Nos. given in this parts catalogue can be identified as follows.

Model	Type	Parts catalogue type	Engine		Applicable engine serial No.	Applicable frame serial No.	Applicable carburetor identification No.
			Model	Type			
BF2Bx	LCG	LCG	BF2Bx	SEC3	BEBF-1000001 ~9999999	BZBM-1000001 ~1299999	BF33C A/B/C/F
	LCHG	LCHG					
	SCG	SCG					
	SCHG	SCHG					
BF2B ₂	LCG	LCG					
	LCHG	LCHG					
	SCG	SCG					
	SCHG	SCHG					
BF2.3B ₄	LCG	LCG			BEBF-1000001~	BZBM-2000001~	BF33C F
	LCHG	LCHG					
	SCG	SCG					
	SCHG	SCHG					

Model	Type	Parts catalogue type	Engine		Applicable engine serial No.	Applicable frame serial No.	Applicable carburetor identification No.
			Model	Type			
BF2Dx	LCD	LCD	BF2Dx	SEC	BEBF-100001 ~9999999	BZBF-100001 ~1099999	BF33A A/B/C
	LCHD	LCHD					
	LCHU	LCHU					
	LD	LD		SE			
	LHD	LHD					
	LU	LU					
	SCD	SCD		SEC			
	SCHD	SCHD					
	SCHU	SCHU					
	SD	SD		SE			
	SHD	SHD					
	SHU	SHU					
SU	SU						
BF2D1	LC	LC		SE1		BZBK-120001 ~1299999	BF33B B/C
	LCHC	LCHC		SEC1		BZBF-120001 ~1299999	
	SC	SC		SE1		BZBK-120001 ~1299999	
	SCHC	SCHC		SEC1		BZBF-120001 ~1299999	
	SHC	SHC		SE1		BZBK-120001 ~1299999	

Model	Type	Parts catalogue type	Engine		Applicable engine serial No.	Applicable frame serial No.	Applicable carburetor identification No.
			Model	Type			
BF2D ₂	LC	LC	BF2D _x	SE1	BEBF-100001 ~9999999	BZBK-130001 ~1399999	BF33B C/D/E
	LCD	LCD		SEC	BEBF-100001 ~1999999	BZBF-130001 ~1999999	BF33A C/D/E
	LCHC	LCHC		SEC1	BEBF-100001 ~9999999	BZBF-130001 ~1399999	BF33B C/D/E
	LCHD	LCHD		SEC	BEBF-100001 ~1999999	BZBF-130001 ~1999999	BF33A C/D/E
	LCHU	LCHU					
	LD	LD		SE	BEBF-100001 ~1999999	BZBK-130001 ~1999999	BF33A C/D/E
	LHD	LHD					
	LU	LU		SE1	BEBF-100001 ~9999999	BZBK-130001 ~1399999	BF33B C/D/E
	SC	SC					
	SCD	SCD		SEC	BEBF-100001 ~1999999	BZBF-130001 ~1999999	BF33A C/D/E
	SCHC	SCHC		SEC1	BEBF-100001 ~9999999	BZBF-130001 ~1399999	BF33B C/D/E
	SCHD	SCHD		SEC	BEBF-100001 ~1999999	BZBF-130001 ~1999999	BF33A C/D/E
	SCHU	SCHU					
	SD	SD		SE	BEBF-100001 ~1999999	BZBK-130001 ~1999999	BF33A C/D/E
	SHC	SHC		SE1		BZBK-130001 ~1399999	
	SHD	SHD		SE	BEBF-100001 ~1999999	BZBK-130001 ~1999999	BF33A C/D/E
	SHU	SHU					
SU	SU						

Model	Type	Parts catalogue type	Engine		Applicable engine serial No.	Applicable frame serial No.	Applicable carburetor identification No.
			Model	Type			
BF2D ₃	LC	LC	BF2D _x	SE1	BEBF-1000001 ~1999999	BZBK-1400001 ~1999999	BF33B E
	LCHC	LCHC		SEC1		BZBF-1400001 ~1999999	
	SC	SC		SE1		BZBK-1400001 ~1999999	
	SCHC	SCHC		SEC1		BZBF-1400001 ~1999999	
	SHC	SHC		SE1		BZBK-1400001 ~1999999	
BF2D ₄	LCD	LCD	BF2D ₄	SEC	BEBF-2000001~	BZBF-2000001~	BF33A E
	LCHD	LCHD					
	LCHU	LCHU					
	LD	LD		SE		BZBK-2000001~	
	LHD	LHD					
	LU	LU					
	SCD	SCD		SEC		BZBF-2000001~	
	SCHD	SCHD					
	SCHU	SCHU					
	SD	SD		SE		BZBK-2000001~	
	SHD	SHD					
	SHU	SHU					
	SU	SU					

* Of carburetor identification numbers, only the portions underlined in the example below are used for registration.

BF 33C A KC +
 (A) (B)

Features of each type

- See the following table for the features of each type.

Specifications		Model	BF2BX				BF2B2				BF2.3B4			
		Type	LCG	LCHG	SCG	SCHG	LCG	LCHG	SCG	SCHG	LCG	LCHG	SCG	SCHG
Transom height	418 mm			•	•			•	•			•	•	
	571 mm	•	•			•	•			•	•			
Lever throttle		•		•		•		•		•		•		
Grip throttle			•		•		•		•		•		•	
Clutch		•	•	•	•	•	•	•	•	•	•	•	•	
Engine cover kit		(•)	(•)	(•)	(•)									
Propeller cover kit		(•)	(•)	(•)	(•)									
Engine carrier bag kit		(•)	(•)	(•)	(•)									

Specifications		Model	BF2DX											BF2D1					
		Type	LCD	LCHD	LCHU	LD	LHD	LU	SCD	SCHD	SCHU	SD	SHD	SHU	SU	LC	LCHC	SC	SCHC
Transom height	418 mm							•	•	•	•	•	•	•			•	•	•
	571 mm	•	•	•	•	•	•								•	•			
Lever throttle		•			•		•	•			•			•	•		•		
Grip throttle			•	•		•			•	•		•	•			•		•	•
Clutch		•	•	•				•	•	•						•		•	
Engine cover kit		(•)	(•)	(•)	(•)	(•)	(•)	(•)	(•)	(•)	(•)	(•)	(•)	(•)	(•)	(•)	(•)	(•)	(•)
Propeller cover kit		(•)	(•)	(•)	(•)	(•)	(•)	(•)	(•)	(•)	(•)	(•)	(•)	(•)	(•)	(•)	(•)	(•)	(•)
Engine carrier bag kit		(•)	(•)	(•)	(•)	(•)	(•)	(•)	(•)	(•)	(•)	(•)	(•)	(•)	(•)	(•)	(•)	(•)	(•)

Specifications		Model	BF2D2																	
		Type	LC	LCD	LCHC	LCHD	LCHU	LD	LHD	LU	SC	SCD	SCHC	SCHD	SCHU	SD	SHC	SHD	SHU	SU
Transom height	418 mm										•	•	•	•	•	•	•	•	•	•
	571 mm	•	•	•	•	•	•	•	•											
Lever throttle			•	•				•		•	•					•				•
Grip throttle					•	•	•		•				•	•	•		•	•	•	
Clutch				•	•	•						•	•	•	•					
Engine cover kit																				
Propeller cover kit																				
Engine carrier bag kit																				

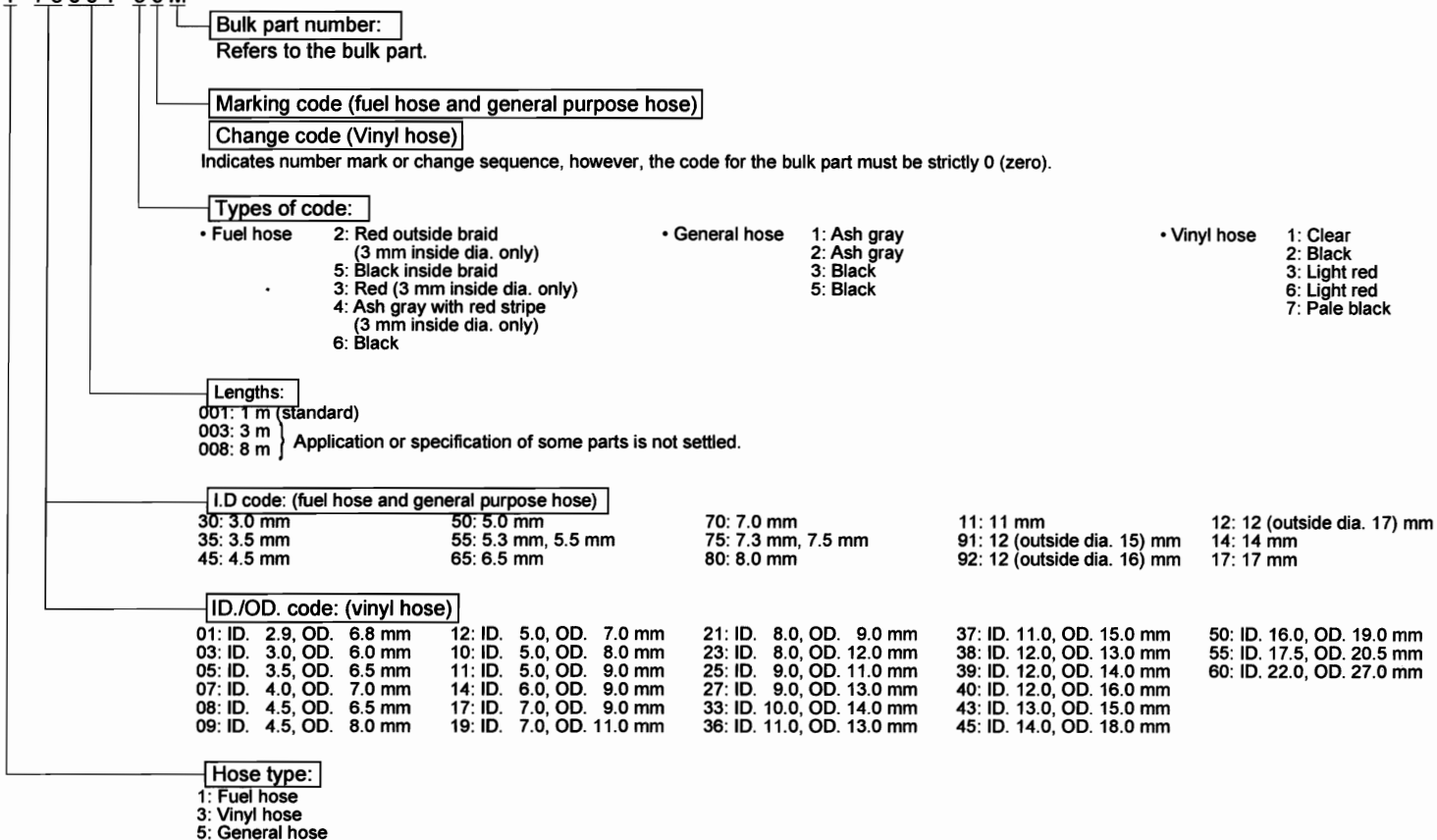
Specifications		Model	BF2D3					BF2D4														
		Type	LC	LCHC	SC	SCHC	SHC	LCD	LCHD	LCHU	LD	LHD	LU	SCD	SCHD	SCHU	SD	SHD	SHU	SU		
Transom height	418 mm				•	•	•									•	•	•	•	•	•	•
	571 mm	•	•				•	•	•	•	•	•										
Lever throttle			•		•		•			•		•	•			•				•		•
Grip throttle				•		•		•	•		•				•	•		•	•			
Clutch				•		•	•	•	•				•	•	•							
Engine cover kit																						
Propeller cover kit																						
Engine carrier bag kit																						

Fuel hose, general purpose hoses and vinyl hose

- The standard part fuel hose, general purpose hose and vinyl hose may be substituted by the coiled bulk part.
- When ordering the standard part fuel hose, general purpose hose and vinyl hose use the bulk part number written in the parts catalog in brackets () underneath the part name.
- When exchanging the hose, cut and use at the specified length as mentioned in the part name.
(For the method of cutting the bulk part, and method of filling out orders etc., please refer to the instructions issued with the bulk part.)

Bulk part number of fuel hose, general purpose hose and vinyl hose.

Example: 9 5 0 0 1 - 7 5 0 0 1 - 5 0 M



© **CAUTION:** It is **DANGEROUS** to confuse the fuel hose with the general purpose hose or vinyl hose.

Never use a general purpose hose or vinyl hose in place of a fuel hose or vice versa. Always use the correct bulk part in the parts catalogue, according to the service manual or the instructions issued with the bulk part.

How to use the flat rate time (F.R.T.)

This F.R.T. (Flat Rate Time) is used to determine the standard labor time allowed for replacement of parts covered by the warranty during the period the warranty is in effect. The F.R.T. for those parts which are not listed herein should be determined from the operation closely related to the replacement of that part.

1. The F.R.T. is based on the following servicing conditions

- a. A liberal allowance is added to the net servicing time.
- b. Standard times specified are based on the condition that the necessary servicing tools listed in the service manual which describes the Honda service policy are available close at hand and the work performed by a mechanic with normal skill.
- c. Time required for inspection and operational test following the servicing is included in the F.R.T.
- d. The F.R.T. for "*" marked parts are same as the F.R.T. for the representative part above.
- e. The F.R.T. shown with (*) includes engine removal and installation.

2. Method of computing

The job times are listed in tenth of an hour to simplify computation.

(Example) 0.3 = 18 minutes
5.6 = 5 hours and 36 minutes

CONVERSION CHART			
Hours	Minutes	Hours	Minutes
0.1	6	0.6	36
0.2	12	0.7	42
0.3	18	0.8	48
0.4	24	0.9	54
0.5	30	1.0	60

3. Computing the F.R.T.

The following are only examples and do not reflect the actual F.R.T. for this product.

When several jobs are performed at the same time, make the calculation in the following manner.

a. Jobs of non duplicated nature

The F.R.T. for the job is obtained by totalling the F.R.T. for each part replaced.

(Example) Replacement of head cover gasket and oil filter.

Service item	F.R.T.
Packing, cylinder head cover	0.5
Cartridge, oil filter	0.5

The F.R.T. for the job is: $0.5 + 0.5 = 1.0$

b. Jobs of duplicated nature

Take the F.R.T. for the last part to be replaced.

(Example) Replacement of piston and cylinder head gasket.

Service item	F.R.T.
Gasket comp., cylinder head	3.0
Piston	*5.0

The F.R.T. for the job is: 5.0

c. Jobs of partially related nature

Total up the F.R.T. for all of the parts replaced and then subtract the F.R.T. for the duplicated operation (i.e., cylinder head gasket service).

(Example) Replacement of valve and cylinder head.

Service item	F.R.T.
Valve	*3.0
Head assy., cylinder	*4.0
Gasket comp., cylinder head	*2.5

The F.R.T. for the job is: $(3.0 + 4.0) - 2.5 = 4.5$

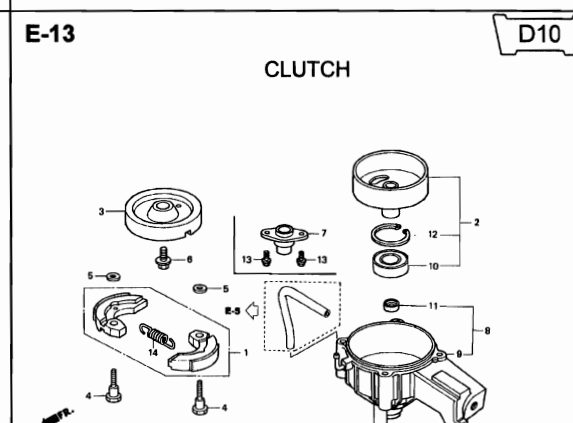
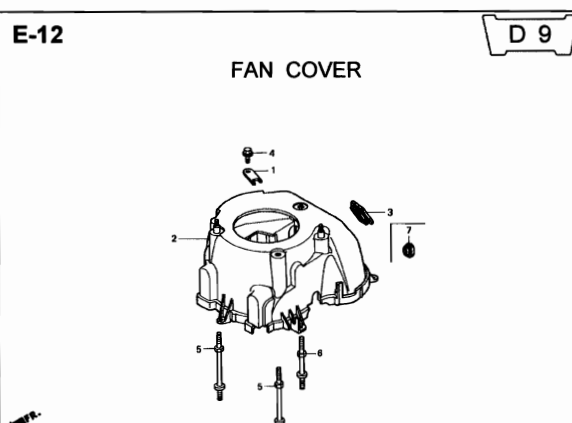
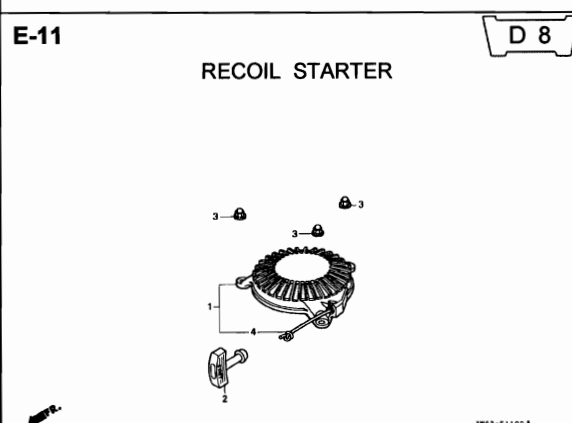
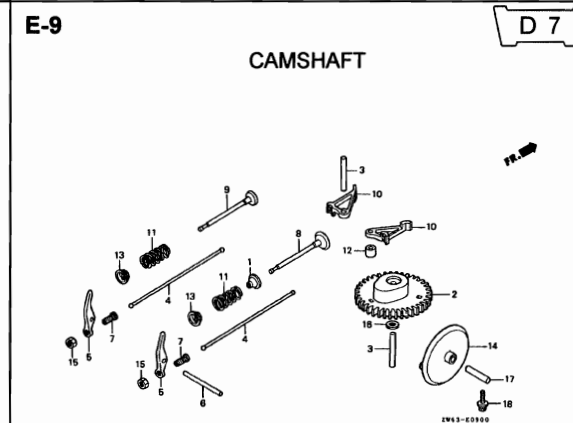
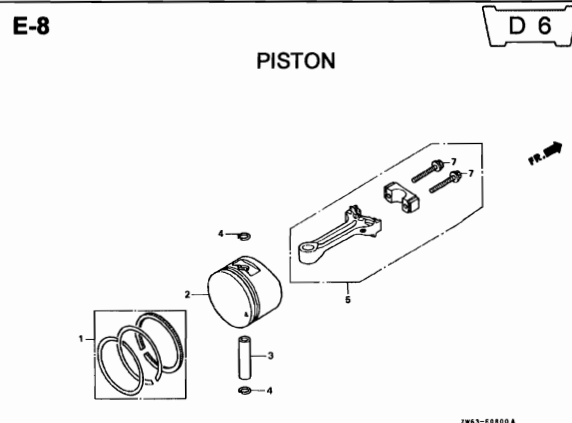
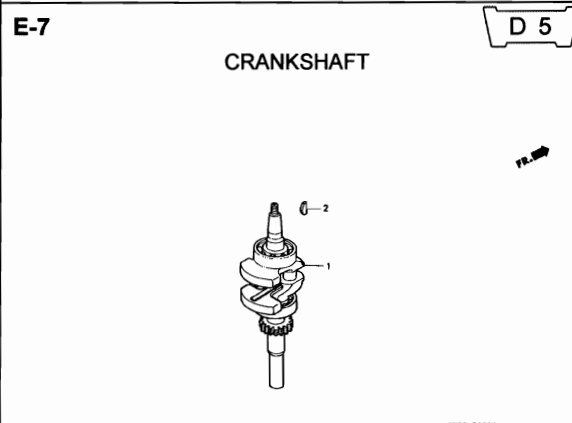
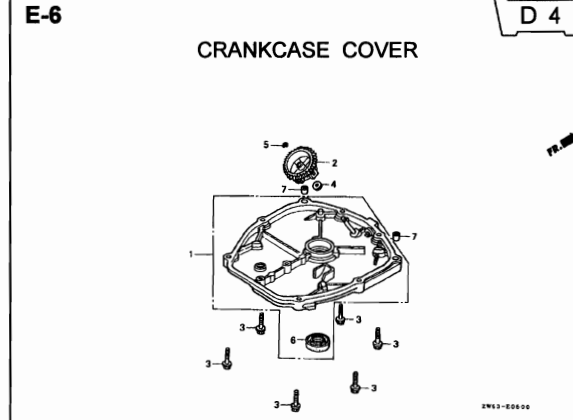
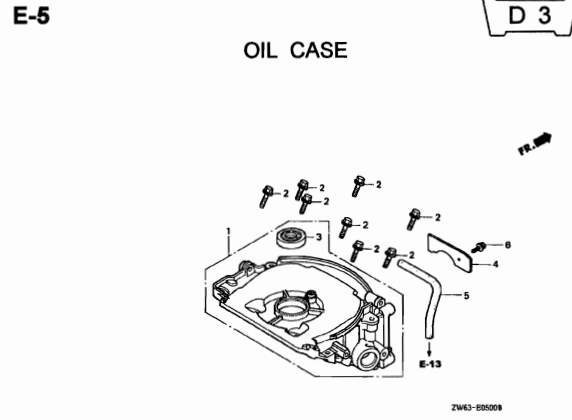
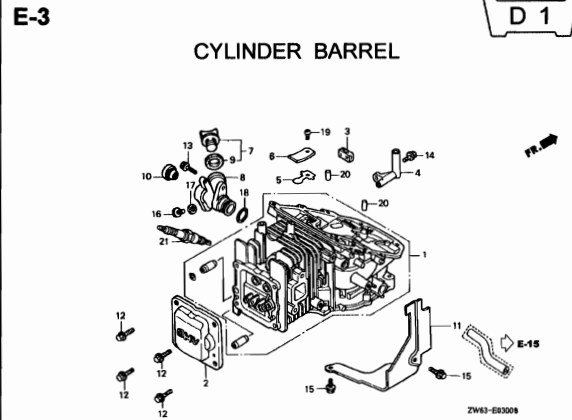
- The F.R.T. shown with (*) includes engine removal and installation.
- The parts, having the same number of man-hour, are identified by a mark "*", and classified under the title of their representative work.

4. Adjustment, inspection/cleaning, removal and installation

Item	Service item	F.R.T.
Adjustment	Valve clearance	0.8
	Carburetor	0.2
	Throttle cable	0.2
Inspection/ Cleaning	Carburetor	0.6
	Spark plug	0.1
Removal and installation	Engine	1.0
	Gear case	0.4

ENGINE GROUP

B15



2

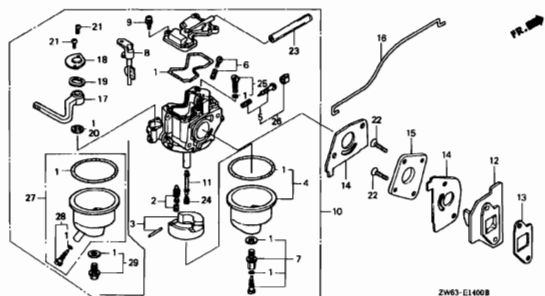
ENGINE GROUP

B16

E-14

D12

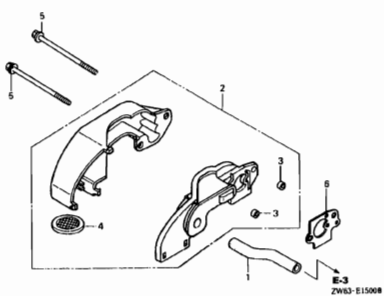
CARBURETOR



E-15

E 1

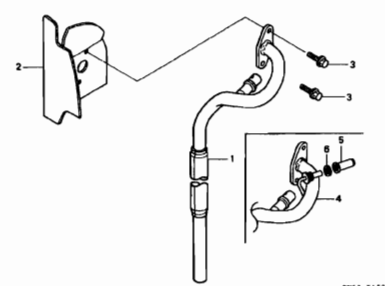
AIR CLEANER



E-16

E 2

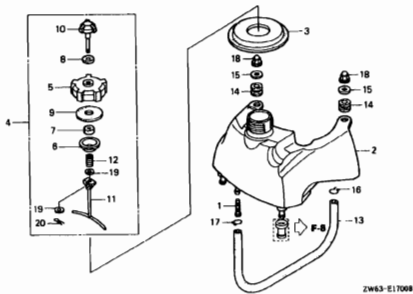
MUFFLER



E-17

E 3

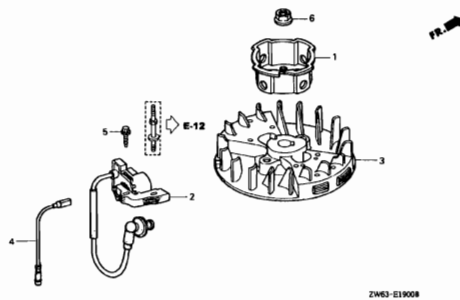
FUEL TANK



E-19

E 5

FLYWHEEL/IGNITION COIL



2

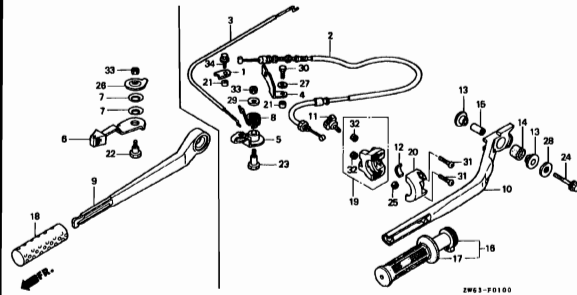
FRAME GROUP

C 1

F-1

STEERING HANDLE

F 1

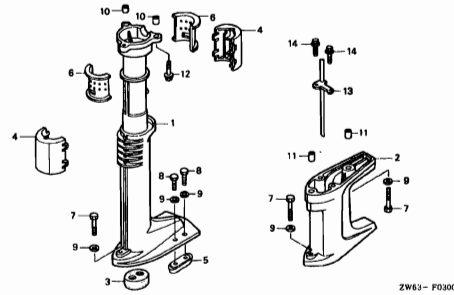


ZW63-F0100

F-3

EXTENSION CASE

F 4

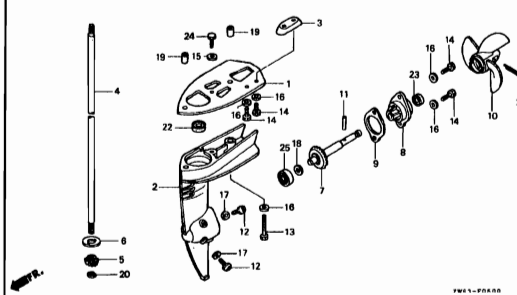


ZW63-F03008

F-5

PROPELLER/GEAR CASE/VERTICAL SHAFT

F 6

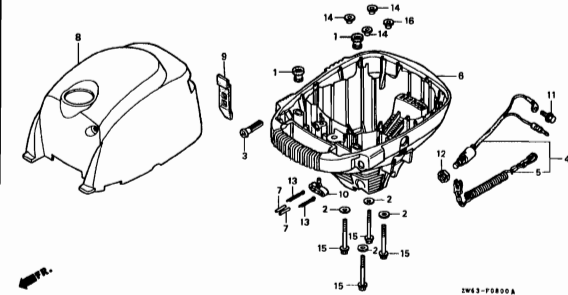


ZW63-F04004

F-8

ENGINE CASE

F 8

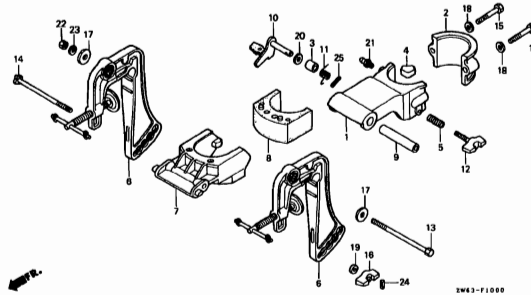


ZW63-F08004

F-10

STERN BRACKET

F10

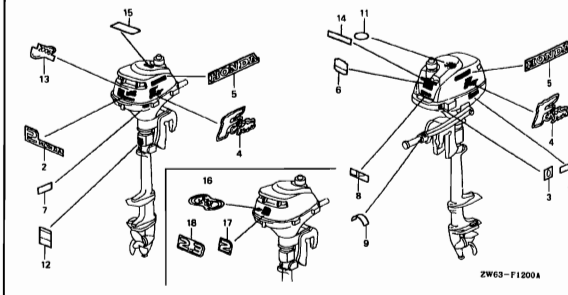


ZW63-F10000

F-12

LABEL

F12

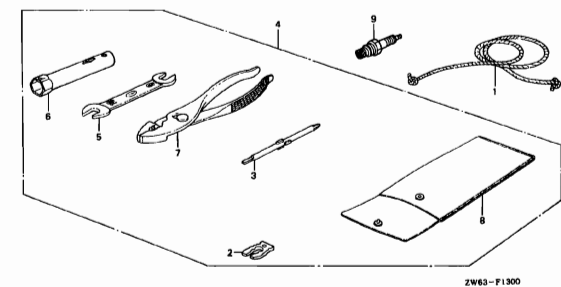


ZW63-F12004

F-13

TOOL

F14

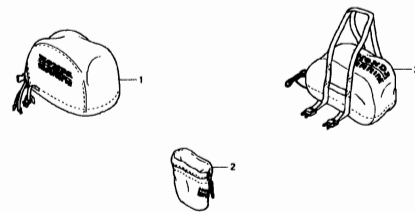


ZW63-F1300

FOP-1

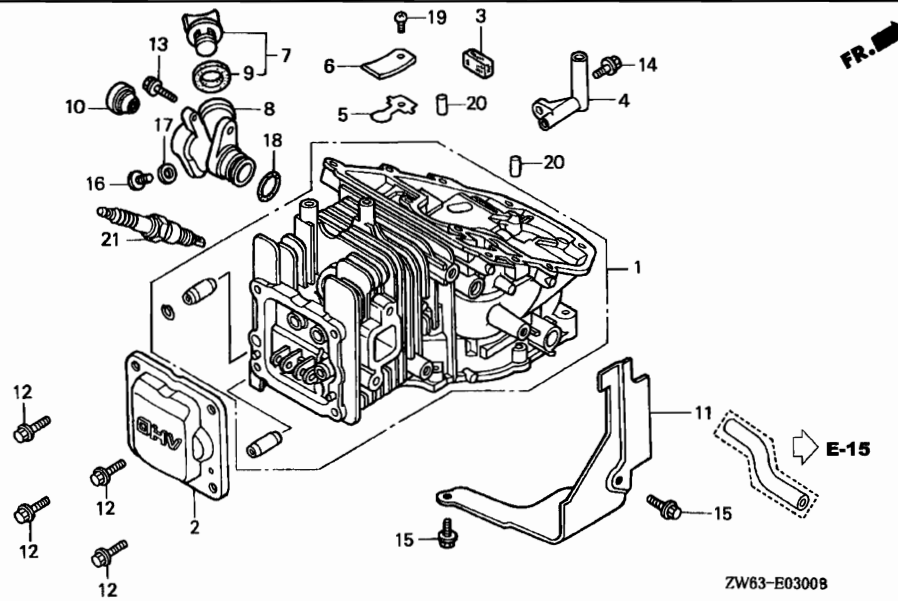
COVER KIT/BAG KIT

F15



ZW63-Y01004

3



Service item	F.R.T.
PLUG, SPARK	0.1
EXTENSION, OIL LEVEL FINDER ..	0.6
.O-RING, 22.5X2.2	
COVER, HEAD	0.7
.SHROUD	
FILTER, BREATHER	0.9
.VALVE, OIL OUTLET	
BARREL COMP., CYLINDER	*2.2

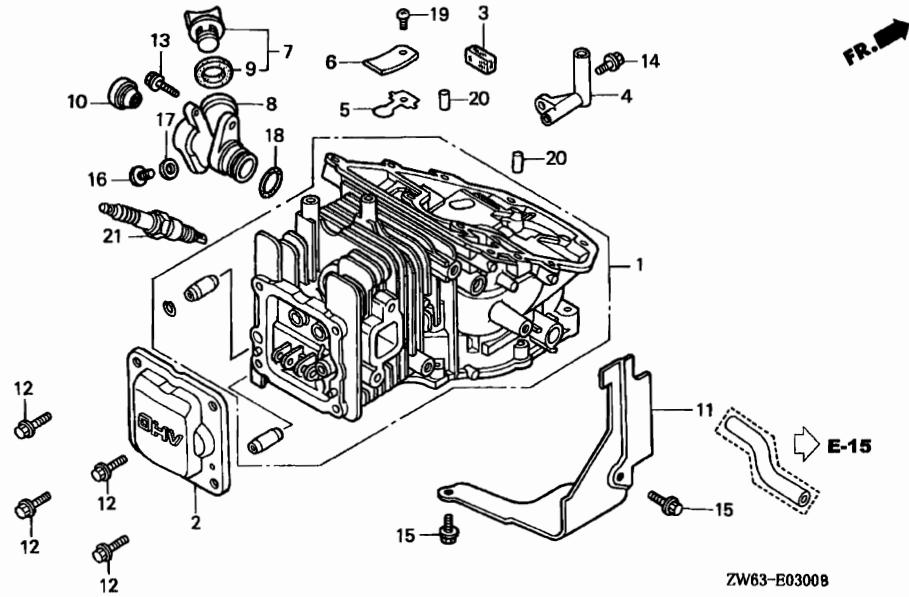
ZW63-E03008

Ref. No.	Part No.	Description	Reqd. QTY								Serial No.	Parts catalogue code
			BF 2B	BF 2B	BF 2.3B	BF 2D	BF 2D	BF 2D	BF 2D	BF 2D		
1	12100-ZW6-000	BARREL COMP., CYLINDER	1	1	-	1	1	1	1	-		
	12100-ZW6-010	-	-	1	-	-	-	-	1		
2	12311-ZW6-000ZA	COVER, HEAD *NH105*...MAT BLACK (#15-#20)	1	1	1	1	1	1	1	1		
3	12367-ZE6-010	FILTER, BREATHER	1	1	1	1	1	1	1	1		
4	15171-ZN4-000	PIPE, BREATHER	1	1	1	1	1	1	1	1		
5	15571-ZM7-003	VALVE, OIL OUTLET	1	1	1	1	1	1	1	1		
6	15572-ZM7-000	PLATE, STOPPER	1	1	1	1	1	1	1	1		
7	15600-ZG4-003	CAP ASSY., OIL FILLER	1	1	1	1	1	1	1	1		
8	15622-ZW6-000	EXTENSION, OIL LEVEL FINDER ..	1	1	1	1	1	1	1	1		
9	15625-ZE1-003	PACKING, OIL FILLER CAP	1	1	1	1	1	1	1	1		
10	15661-ZV0-003	FINDER, OIL LEVEL	1	1	1	1	1	1	1	1		
11	19631-ZW6-010	SHROUD	1	1	1	1	1	1	1	1		
12	90002-ZW6-000	BOLT, FLANGE, 5X12(CT200) ...	4	4	-	4	4	4	-	-	1056254	1056253
	90002-ZW6-010	4	4	-	4	4	4	-	-	1056254	
			-	-	4	-	-	-	4	4		
13	90003-ZW6-000	BOLT, FLANGE, 5X16	1	-	-	1	1	-	-	-		1055335
	90003-ZW6-010	-	1	-	-	-	1	-	-	1055336	
			-	-	1	-	-	-	1	1		
14	90008-ZM7-000	BOLT, 4X10	1	1	1	1	1	1	1	1		
15	90019-ZV1-000	BOLT, FLANGE, 5X10	2	-	-	2	2	-	-	-		1055335
	90019-ZV1-010	-	2	-	-	-	2	-	-	1055336	
			-	-	2	-	-	-	2	2		
16	90105-ZV4-650	BOLT, OIL CHECK, 8X8	1	1	1	1	1	1	1	1		

E-3

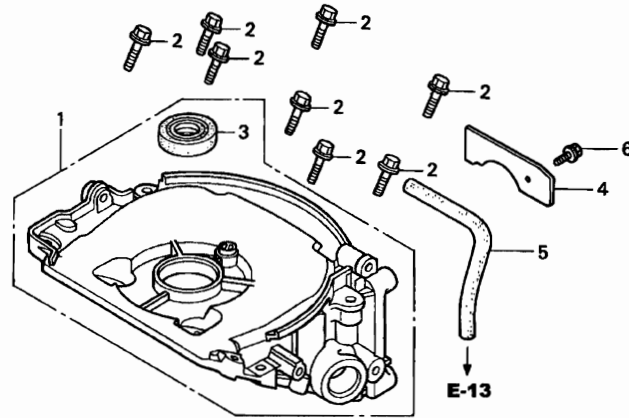
CYLINDER BARREL

D 2



Ref. No.	Part No.	Description	Reqd. QTY								Serial No.	Parts catalogue code
			BF 2B	BF 2B	BF 2.3B	BF 2D	BF 2D	BF 2D	BF 2D	BF 2D		
17	90471-580-000	PACKING, 8MM	1	1	1	1	1	1	1	1		
18	91301-ZE9-003	O-RING, 22.5X2.2	1	1	1	1	1	1	1	1		
19	93500-03005-0A	SCREW, PAN, 3X5	1	1	1	1	1	1	1	1		
20	96220-60150	ROLLER, 6X15	2	2	2	2	2	2	2	2		
21	98056-55757	PLUG, SPARK (U16FSR-UB)	1	-	-	1	-	-	-	-	-----	1026043
	98056-55777	PLUG, SPARK (CR5HSB)	1	-	-	1	-	-	-	-	-----	1026043
	98056-54757	PLUG, SPARK (U14FSR-UB)	1	-	-	1	-	-	-	-	1026044	
	98056-54777	PLUG, SPARK (CR4HSB)	1	-	-	1	-	-	-	-	1026044	
			-	1	1	-	1	1	1	1		

2



Service item	F.R.T.
TUBE, CLUTCH HOUSING BREATHER	0.3
CASE ASSY., OIL	*1.4
.OIL SEAL, 17X27X5	

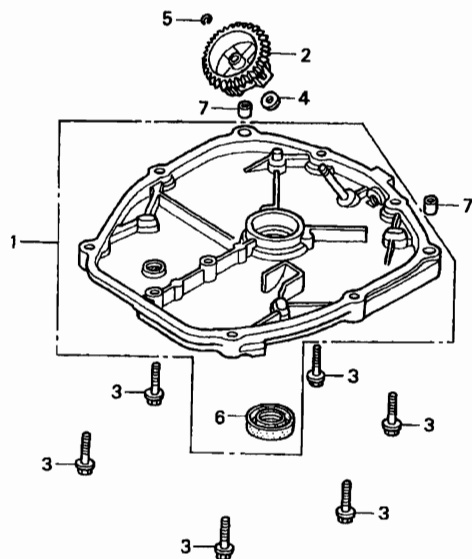
Ref. No.	Part No.	Description	Reqd. QTY								Serial No.	Parts catalogue code
			BF 2B	BF 2B	BF 2.3B	BF 2D	BF 2D	BF 2D	BF 2D	BF 2D		
1	11300-ZW6-000	CASE ASSY., OIL	1	1	1	1	1	1	1	1		
2	90006-ZM7-000	BOLT, FLANGE, 5X23	8	8	-	8	8	8	-	-		
	90174-ZW4-000	BOLT, FLANGE, 5X23(CT200) ...	-	-	8	-	-	-	8	8		
3	91202-HC5-003	OIL SEAL, 17X27X5(ARAI)	1	1	1	1	1	1	1	1		
4	11316-ZW6-000	PLATE, TUBE SETTING	1	-	-	1	-	-	-	-	1026044	
			-	1	1	-	1	1	1	1		
5	15723-ZW6-000	TUBE, CLUTCH HOUSING BREATHER	1	-	-	1	-	-	-	-	1026044	
			-	1	1	-	1	1	1	1		
6	90019-ZV1-000	BOLT, FLANGE, 5X10	1	-	-	1	-	-	-	-	1026044	
			-	1	-	-	-	1	-	-	-----	1055335
	90019-ZV1-010	-	1	-	-	-	1	-	-	1055336	
			-	-	1	-	-	-	1	1		

2

E-6

CRANKCASE COVER

D 4



FR. →

Service item	F.R.T.
HOLDER, GOVERNOR WEIGHT	*1.2
.OIL SEAL, 17X27X5	
COVER COMP., CRANKCASE SIDE ..	*1.3

2

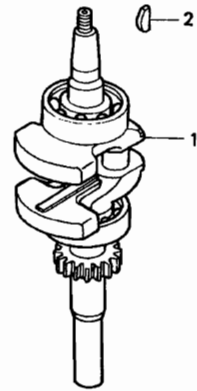
Ref. No.	Part No.	Description	Reqd. QTY								Serial No.	Parts catalogue code
			BF 2B	BF 2B	BF 2.3B	BF 2D	BF 2D	BF 2D	BF 2D	BF 2D		
1	11340-ZW6-000	COVER COMP., CRANKCASE SIDE .	X	2	4	X	1	2	3	4		
	11340-ZW6-010	1	-	-	1	-	-	-	-	1012339	1041214
	11340-ZW6-020	1	-	-	1	1	-	-	-	1012340	1041214
	11340-ZW6-030	1	-	-	1	1	-	-	-	1041215	1041214
2	16512-ZM7-D00	HOLDER, GOVERNOR WEIGHT	1	1	1	1	1	1	1	1		
3	90006-ZM7-000	BOLT, FLANGE, 5X23	6	6	-	6	6	6	-	-		
	90174-ZW4-000	BOLT, FLANGE, 5X23(CT200) ...	-	-	6	-	-	-	6	6		
4	90441-ZM7-000	WASHER, 4.2X13	1	1	1	1	1	1	1	1		
5	90602-ZM7-000	CLIP, GOVERNOR HOLDER	1	1	1	1	1	1	1	1		
6	91202-HC5-003	OIL SEAL, 17X27X5(ARA1)	1	1	1	1	1	1	1	1		
7	94301-06100	DOWEL PIN, 6X10	2	2	2	2	2	2	2	2		

E-7

CRANKSHAFT

D 5

FR. →



ZW63-E0700

Service item	F.R.T.
CRANKSHAFT COMP.	*1.8

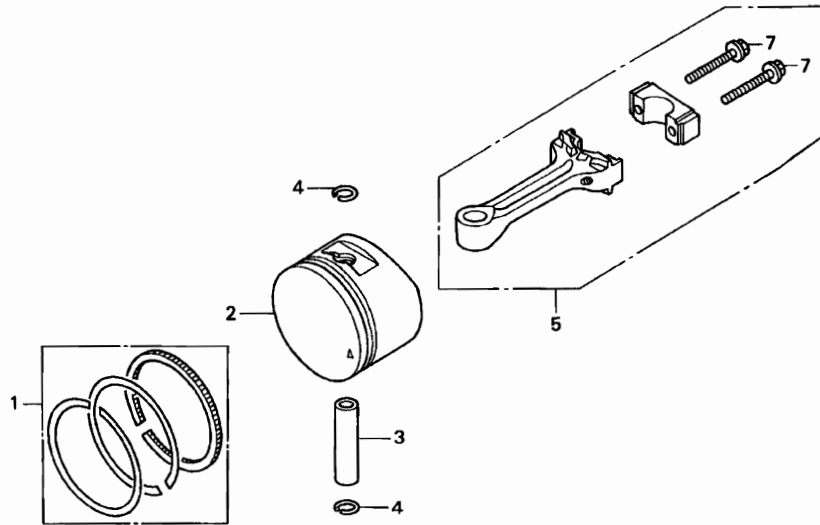
Ref. No.	Part No.	Description	Reqd. QTY								Serial No.	Parts catalogue code
			BF 2B	BF 2B	BF 2.3B	BF 2D	BF 2D	BF 2D	BF 2D	BF 2D		
1	13310-ZN4-000	CRANKSHAFT COMP.	X	2	4	X	1	2	3	4		
2	13331-ZM7-000	KEY, SPECIAL	1	1	1	1	1	1	1	1		

2

E-8

PISTON

D 6

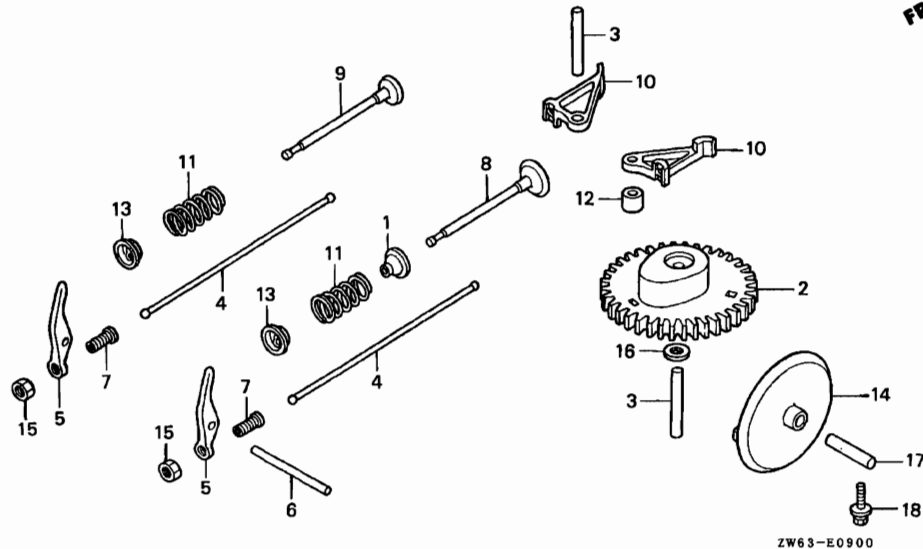


ZW63-E0800 A

Service item	F.R.T.
ROD ASSY., CONNECTING	*1.8
PISTON	*1.9
.RING SET, PISTON	

Ref. No.	Part No.	Description	Reqd. QTY								Serial No.	Parts catalogue code
			BF 2B X	BF 2B 2	BF 2.3B 4	BF 2D X	BF 2D 1	BF 2D 2	BF 2D 3	BF 2D 4		
1	13010-ZW6-000	RING SET, PISTON (STD.)	1	1	1	1	1	1	1			
2	13101-ZW6-000	PISTON	1	1	-	1	1	1	-	-----	1051353	
	13101-ZW6-010	1	1	-	1	1	1	-	1051354		
			-	-	1	-	-	-	1	1		
3	13111-122-000	PIN, PISTON, 10X33	1	1	1	1	1	1	1			
4	13115-147-000	CLIP, PISTON PIN, 10MM	2	2	2	2	2	2	2			
5	13200-ZN4-000	ROD ASSY., CONNECTING	1	1	1	1	1	1	1			
7	90001-ZM7-000	BOLT, CONNECTING ROD	2	2	2	2	2	2	2			

2



ZW63-E0900

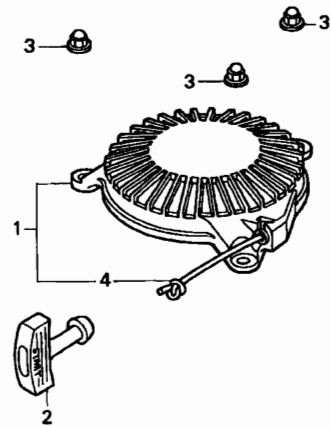
Service item	F.R.T.
ARM, VALVE ROCKER	*1.0
CAMSHAFT	*1.1
.LIFTER, VALVE	
.ROD, PUSH	
(ADD 0.1 FOR EACH.)	
.SLINGER, OIL	
SEAL, VALVE STEM	*2.0
.VALVE	
(ADD 0.1 FOR EACH.)	

Ref. No.	Part No.	Description	Reqd. QTY								Serial No.	Parts catalogue code
			BF 2B	BF 2B	BF 2.3B	BF 2D	BF 2D	BF 2D	BF 2D	BF 2D		
1	12209-ZM7-003	SEAL, VALVE STEM	1	1	1	1	1	1	1	1		
2	14111-ZM7-000	CAMSHAFT	1	1	1	1	1	1	1	1		
3	90702-P6R-008	PIN, OIL PUMP	2	-	-	2	2	-	-	-	-----	1041214
	14126-Z0G-003	ROLLER (5X29.8)	2	-	-	2	2	-	-	-	1041215	
			-	2	2	-	-	2	2	2		
4	14410-ZM7-000	ROD, PUSH	2	2	2	2	2	2	2	2		
5	14431-ZM7-000	ARM, VALVE ROCKER	2	2	2	2	2	2	2	2		
6	14435-ZM7-003	ROLLER (4X37.8)	1	1	1	1	1	1	1	1		
7	14451-ZM7-000	PIVOT, ROCKER ARM	2	2	2	2	2	2	2	2		
8	14711-ZW6-000	VALVE, IN.	1	1	1	1	1	1	1	1		
9	14721-ZW6-000	VALVE, EX.	1	1	1	1	1	1	1	1		
10	14731-ZM7-003	LIFTER, VALVE	2	-	-	2	-	-	-	-	-----	1012339
	14731-ZM7-013	2	-	-	2	-	-	-	-	1012340	
			-	2	2	-	2	2	2	2		
11	14751-ZM7-000	SPRING, VALVE	2	2	2	2	2	2	2	2		
12	14754-ZM7-000	COLLAR, LIFTER	1	1	1	1	1	1	1	1		
13	14771-ZM3-010	RETAINER, VALVE SPRING	2	2	2	2	2	2	2	2		
14	15361-ZN4-000	SLINGER, OIL	1	1	1	1	1	1	1	1		
15	90206-KM3-000	NUT, TAPPET ADJUSTING	2	2	2	2	2	2	2	2		
16	90401-ZW6-000	WASHER, 6MM	1	1	1	1	1	1	1	1		
17	91151-VB5-800	ROLLER, 6X25	1	1	1	1	1	1	1	1		
18	93404-05016-08	BOLT-WASHER, 5X16	1	1	1	1	1	1	1	1		

E-11

RECOIL STARTER

D 8



Service item	F.R.T.
KNOB, STARTER	0.1
STARTER ASSY., RECOIL	0.2
ROPE, RECOIL STARTER	0.3

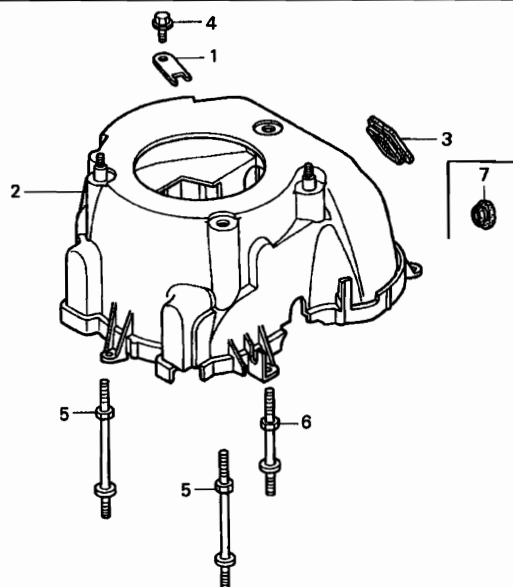
Ref. No.	Part No.	Description	Reqd. QTY								Serial No.	Parts catalogue code	
			BF 2B X	BF 2B 2	BF 2.3B 4	BF 2D X	BF 2D 1	BF 2D 2	BF 2D 3	BF 2D 4			
1	28400-ZW6-003	STARTER ASSY., RECOIL	1	1	1	1	1	1	1	1	1		
2	28461-ZA8-902	KNOB, STARTER	1	1	1	1	1	1	1	1	1		
3	90303-GC2-630	NUT, FLANGE CAP, 5MM	3	3	3	3	3	3	3	3	3		
4	28462-ZW6-003	ROPE, RECOIL STARTER	1	1	1	1	1	1	1	1	1		

2

E-12

FAN COVER

D 9



ZW63-E1200 A

Service item	F.R.T.
GROMMET, FAN COVER	0.1
BOLT, STUD	0.3
(ADD 0.1 FOR EACH.)	
.COVER COMP., FAN	

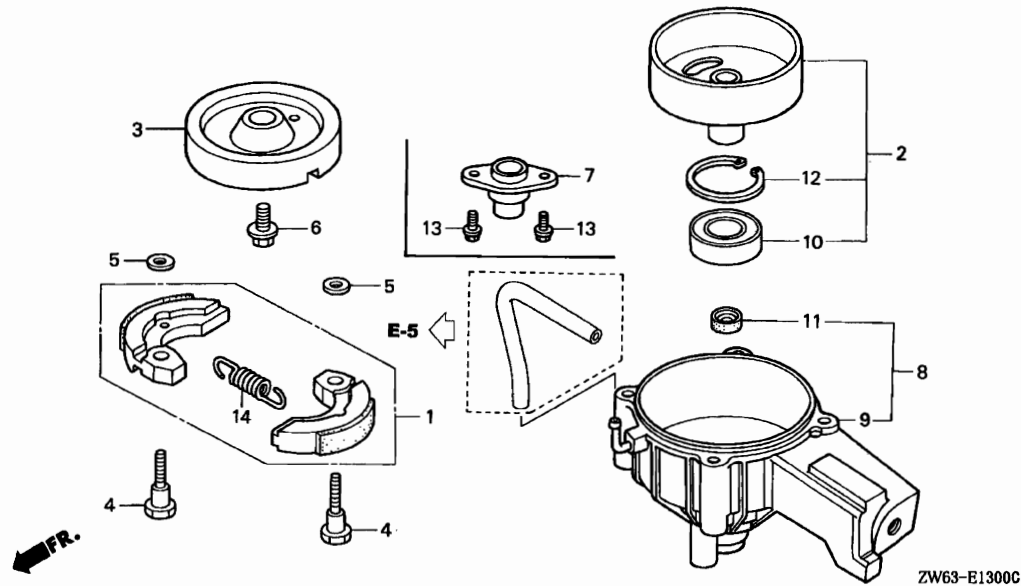
Ref. No.	Part No.	Description	Reqd. QTY								Serial No.	Parts catalogue code	
			BF 2B X	BF 2B 2	BF 2.3B 4	BF 2D X	BF 2D 1	BF 2D 2	BF 2D 3	BF 2D 4			
1	16576-ZW6-010	HOLDER, CABLE	1	-	-	1	-	-	-	-	-		LC,LCHC,SC,SHC SCHC
	16576-ZV0-010	-	-	-	-	-	-	-	-	-		SCHC
		-	1	1	-	-	1	-	1	1		LCD,LCHD,LCHU,LD,LHD,LU,SCD,SCHD,SCHU,SD,SHD SHU,SU
2	19610-ZW6-680	COVER COMP., FAN	1	1	1	-	-	-	-	-	-		
	19610-ZW6-000	-	-	-	1	1	1	1	1	1		
3	19615-ZV0-000	GROMMET, FAN COVER	1	1	1	1	1	1	1	1	1		
4	90002-ZV0-000	BOLT, FLANGE, 5X10	1	-	-	1	1	-	-	-	-		
	90002-ZV0-010	-	1	-	-	-	1	-	-	-	1055335	
		-	-	1	-	-	-	1	1	1	1055336	
5	90042-ZM7-000	BOLT, STUD (A)	2	2	2	2	2	2	2	2	2		
6	90043-ZM7-000	BOLT, STUD (B)	1	1	1	1	1	1	1	1	1		
7	82871-671-000	GROMMET, DRAIN HOLE, 25MM ...	1	1	1	-	-	-	-	-	-		

2

E-13

CLUTCH

D10

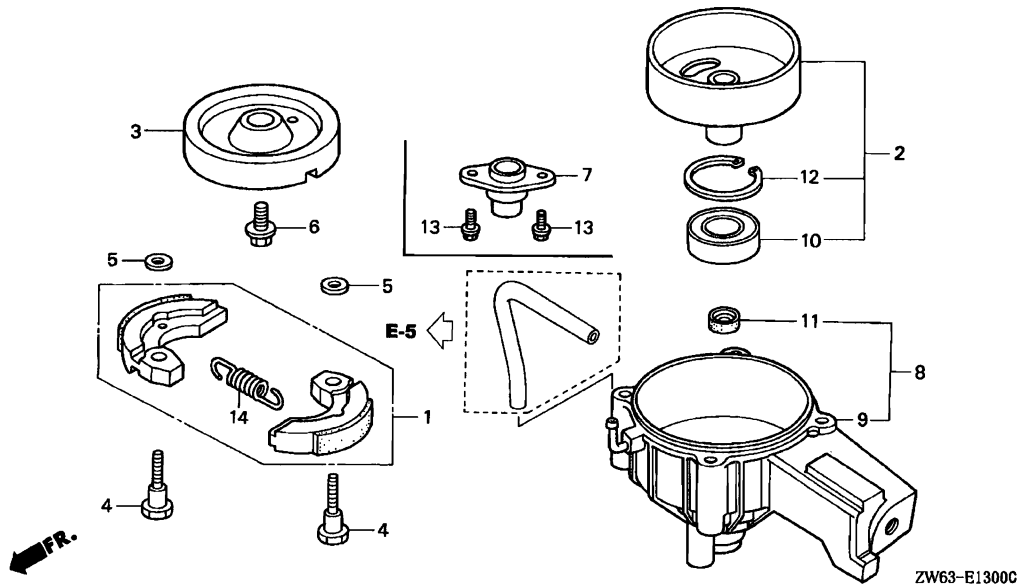


Service item	F.R.T.
CLUTCH ASSY.	*0.8
.STAY, CLUTCH	
OUTER ASSY., CLUTCH	*1.1
BEARING, RADIAL BALL, 6004 ...	*1.2
.HOUSING ASSY., CLUTCH	
.SEAL, WATER, 11X21X8	

ZW63-E1300C

2

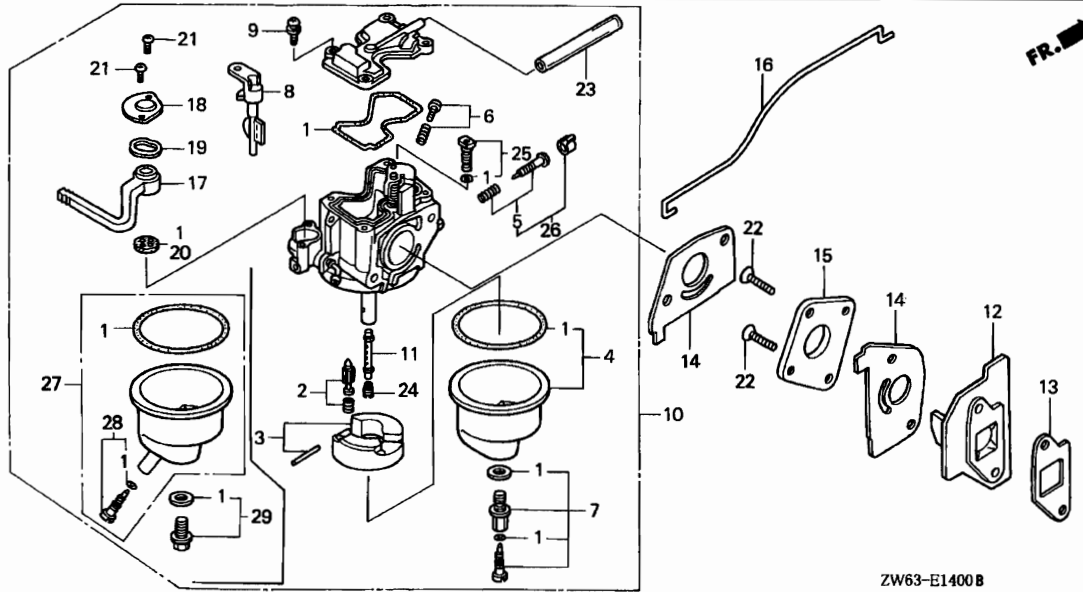
Ref. No.	Part No.	Description	Reqd. QTY								Serial No.	Parts catalogue code
			BF 2B	BF 2B	BF 2.3B	BF 2D	BF 2D	BF 2D	BF 2D	BF 2D		
			X	2	4	X	1	2	3	4		
1	22000-ZW6-701	CLUTCH ASSY.	1	1	1	-	-	-	-	-	-----	LCD,LCHC,LCHD,LCHU,SCD,SCHC,SCHD,SCHU
2	22100-ZW6-700	OUTER ASSY., CLUTCH	1	-	-	-	-	-	-	-	1026043	1026043 LCD,LCHD,LCHU,SCD,SCHD,SCHU
	22100-ZW6-701	1	-	-	-	-	-	-	-	1026044	1061219 LCD,LCHD,LCHU,SCD,SCHD,SCHU
			-	1	-	-	-	-	-	-	1061219	1061219 LCD,LCHD,LCHU,SCD,SCHD,SCHU
			-	-	-	1	1	-	-	-	1026044	1061219 LCD,LCHD,LCHU,SCD,SCHD,SCHU
	22100-ZW6-702	1	1	-	-	-	-	-	-	1061220	1061219 LCD,LCHC,LCHD,LCHU,SCD,SCHC,SCHD,SCHU
			-	-	1	-	-	-	-	-	1061220	----- LCD,LCHC,LCHD,LCHU,SCD,SCHC,SCHD,SCHU
			-	-	-	1	1	1	-	1	-----	LCD,LCHC,LCHD,LCHU,SCD,SCHC,SCHD,SCHU
3	22214-ZW6-700	STAY, CLUTCH	1	1	-	1	1	1	-	-	1061219	1061219
	22214-ZW6-701	1	1	-	1	1	1	-	-	1061220	----- LCD,LCHC,LCHD,LCHU,SCD,SCHC,SCHD,SCHU
			-	-	1	-	-	-	1	1		
4	22253-ZW6-700	BOLT, CLUTCH (8MM)	2	2	2	-	-	-	-	-	-----	LCD,LCHC,LCHD,LCHU,SCD,SCHC,SCHD,SCHU
5	22254-ZW6-700	WASHER, PLAIN (8MM)	2	2	2	-	-	-	-	-	-----	LCD,LCHC,LCHD,LCHU,SCD,SCHC,SCHD,SCHU
			-	-	-	2	2	2	2	2	-----	LCD,LCHC,LCHD,LCHU,SCD,SCHC,SCHD,SCHU
6	22255-ZN4-000	BOLT, CLUTCH STAY (8MM)	1	1	1	1	1	1	1	1	-----	LC,LD,LHD,LU,SC,SD,SHC,SHD,SHU,SU
7	22257-ZW6-000	SHAFT, EXTENSION	-	-	-	1	1	1	1	1	-----	LC,LD,LHD,LU,SC,SD,SHC,SHD,SHU,SU
8	22260-ZW6-000	HOUSING ASSY., CLUTCH	-	-	-	1	-	-	-	-	1026043	1026043 LCD,LCHD,LCHU,LD,LHD,LU,SCD,SCHD,SCHU,SD,SHD
			-	-	-	-	-	-	-	-		SU
	22260-ZW6-020	1	1	1	-	1	1	1	1	-----	SHU
			-	-	-	1	-	-	-	-	1026044	----- LCD,LCHD,LCHU,LD,LHD,LU,SCD,SCHD,SCHU,SD,SHD
			-	-	-	1	-	-	-	-		SU



ZW63-E1300C

Ref. No.	Part No.	Description	Reqd. QTY								Serial No.	Parts catalogue code
			BF 2B X	BF 2B 2	BF 2.3B 4	BF 2D X	BF 2D 1	BF 2D 2	BF 2D 3	BF 2D 4		
9	22261-ZW6-000	HOUSING, CLUTCH	-	-	-	1	-	-	-	-	1026043	LCD,LCHD,LCHU,LD,LHD,LU,SCD,SCHD,SCHU,SD,SHD SU
	22261-ZW6-020	HOUSING COMP., CLUTCH	1	1	1	-	1	1	1	1	-	SHU
			-	-	-	1	-	-	-	-	1026044	LCD,LCHD,LCHU,LD,LHD,LU,SCD,SCHD,SCHU,SD,SHD SU
10	91001-ZW6-701	BEARING, RADIAL BALL, 6004 ..	1	-	-	-	-	-	-	-	1026043	1026043
	91001-ZW6-702	1	-	-	-	-	-	-	-	1026044	1026043 LCD,LCHD,LCHU,SCD,SCHD,SCHU
			-	1	1	-	-	-	-	-	-	1026044
			-	-	-	1	-	-	-	-	-	1026044
			-	-	-	-	1	1	1	1	-	LCD,LCHD,LCHU,SCD,SCHD,SCHU
			-	-	-	-	1	1	1	1	-	LCD,LCHC,LCHD,LCHU,SCD,SCHC,SCHD,SCHU
11	91251-ZW6-013	SEAL, WATER, 11X21X8	1	1	1	1	1	1	1	1	-	
12	94520-42000	CIRCLIP, INTERNAL, 42MM	1	1	1	-	-	-	-	-	-	
			-	-	-	1	1	1	1	1	-	LCD,LCHC,LCHD,LCHU,SCD,SCHC,SCHD,SCHU
13	95701-08014-08	BOLT, FLANGE, 8X14	-	-	-	2	2	2	2	2	-	LC,LD,LHD,LU,SC,SD,SHC,SHD,SHU,SU
14	22252-ZW6-701	SPRING, CLUTCH SHOE	1	1	1	-	-	-	-	-	-	
			-	-	-	1	1	1	1	1	-	LCD,LCHC,LCHD,LCHU,SCD,SCHC,SCHD,SCHU

2

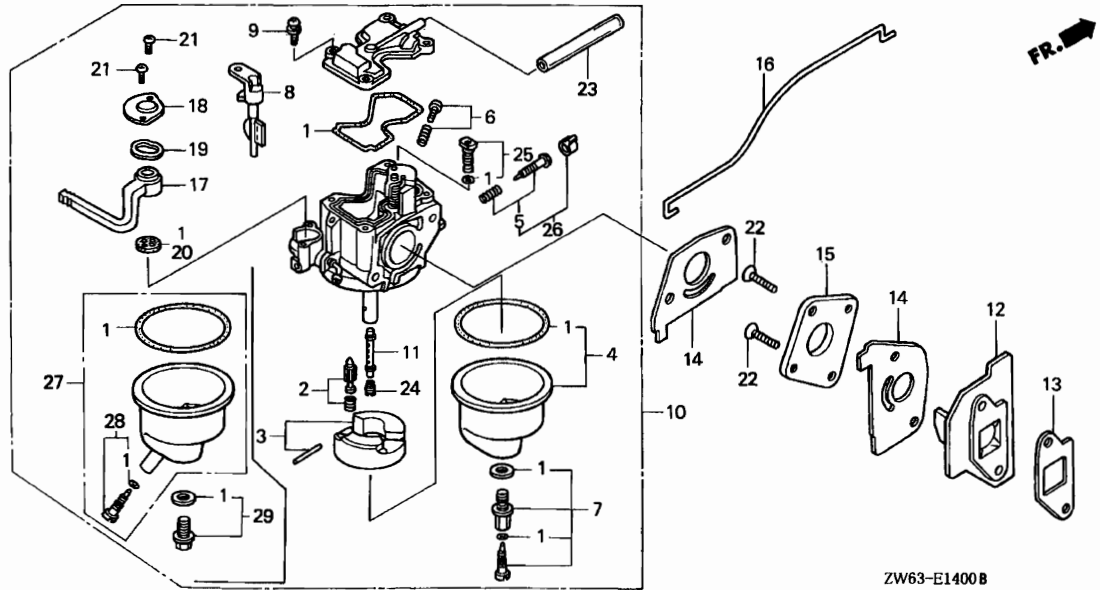


ZW63-E1400B

Service item	F.R.T.
ROD, CHOKE	0.1
CARBURETOR ASSY.	0.2
.INSULATOR, CARBURETOR	
.LEVER, COCK	
.PACKING, CARBURETOR	
(SAME TIME FOR TWO UNITS)	
.PACKING, FUEL COCK	
.PACKING, INSULATOR	
.SCREW SET	
(REF NO,5)	
FLOAT SET	0.3
.GASKET SET	
.JET, MAIN,	
.VALVE SET, FLOAT	

Ref. No.	Part No.	Description	Reqd. QTY								Serial No.	Parts catalogue code
			BF 2B	BF 2B	BF 2.3B	BF 2D	BF 2D	BF 2D	BF 2D	BF 2D		
1	16010-ZV0-025	GASKET SET	X	2	4	X	1	2	3	4		
		(CARBURETOR NO.)	1	1	-	-	-	-	-	-	BF33C D	
		(CARBURETOR NO.)	-	-	-	1	-	-	-	-	BF33B D	
		..	-	-	-	-	1	-	-	-	BF33A D	LCD,LCHD,LCHU,LD,LHD,LU,SCD,SCHD,SCHU,SD,SHD SHU,SU
	16010-ZW6-611	..	-	-	-	-	-	1	-	-	BF33B D	LC,LCHC,SC,SCHC,SHC
		(CARBURETOR NO.)	1	1	-	-	-	-	-	-	BF33C E	
		(CARBURETOR NO.)	-	-	1	-	-	-	1	1	BF33B E	
		..	-	-	-	-	1	-	-	-	BF33A E	LCD,LCHD,LCHU,LD,LHD,LU,SCD,SCHD,SCHU,SD,SHD SHU,SU
		(CARBURETOR NO.)	-	-	-	-	-	-	-	-	BF33B E	LC,LCHC,SC,SCHC,SHC
2	16011-ZE0-005	VALVE SET, FLOAT	1	1	1	1	1	1	1	1		
3	16013-ZG0-811	FLOAT SET	1	1	1	1	1	1	1	1		
4	16015-ZV0-A00	CHAMBER SET, FLOAT	1	-	-	-	-	-	-	-	BF33C B	
		(CARBURETOR NO.)	-	-	-	1	-	-	-	-	BF33A A	
	16015-ZW6-003	..	1	-	-	-	-	-	-	-	BF33C C	BF33C D
		(CARBURETOR NO.)	-	1	-	-	-	-	-	-	BF33C D	
		..	-	-	-	1	-	-	-	-	BF33A B	
		(CARBURETOR NO.)	-	-	-	-	1	-	-	-	BF33A D	LCD,LCHD,LCHU,LD,LHD,LU,SCD,SCHD,SCHU,SD,SHD SHU,SU
		(CARBURETOR NO.)	-	-	-	-	-	1	-	-	BF33B D	LC,LCHC,SC,SCHC,SHC
5	16016-ZV0-A01	SCREW SET	-	-	-	-	1	-	-	-	BF33B D	LC,LCHC,SC,SCHC,SHC
		(CARBURETOR NO.)	-	-	-	1	-	-	-	-	BF33A A	





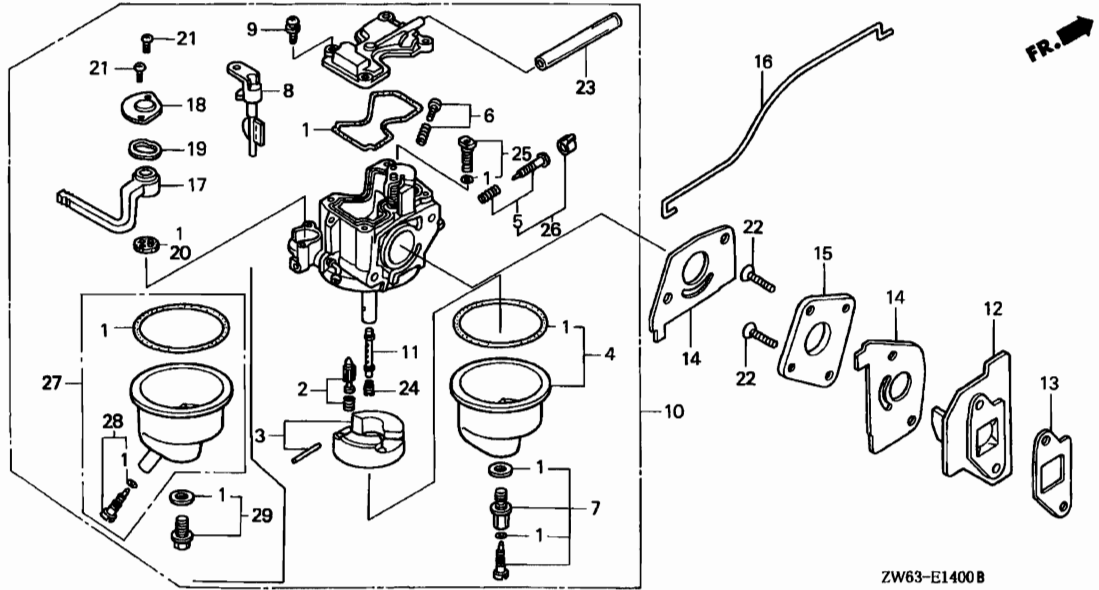
ZW63-E1400B

Ref. No.	Part No.	Description	Reqd. QTY								Serial No.	Parts catalogue code
			BF 2B	BF 2B	BF 2.3B	BF 2D	BF 2D	BF 2D	BF 2D	BF 2D		
(5)	16016-ZW6-003	SCREW SET (CARBURETOR NO.)	X	2	4	X	1	2	3	4	BF33A B	
	16016-ZW6-611	(CARBURETOR NO.)	-	-	-	-	-	1	-	-	BF33A C	LCD, LCHD, LCHU, LD, LHD, LU, SCD, SCHD, SCHU, SD, SHD SHU, SU
6	16028-ZV0-A00	SCREW SET (CARBURETOR NO.)	1	-	-	-	-	-	-	-	BF33C B	
	16028-ZW6-003	(CARBURETOR NO.)	-	-	-	1	-	-	-	-	BF33A A	
		(CARBURETOR NO.)	1	-	-	-	-	-	-	-	BF33C C	
		(CARBURETOR NO.)	-	1	1	-	1	1	1	1	BF33A B	
7	16029-ZW6-003	SCREW SET (CARBURETOR NO.)	1	-	-	-	-	-	-	-	BF33C B	
	16029-ZW6-013	(CARBURETOR NO.)	-	-	-	1	-	-	-	-	BF33A A	
		(CARBURETOR NO.)	1	-	-	-	-	-	-	-	BF33C C	
		(CARBURETOR NO.)	-	1	-	-	1	1	-	-	BF33A B	
8	16044-ZV0-A01	LEVER SET, CHOKE	1	1	1	1	1	1	1	1		
9	16082-ZV0-A00	SCREW, PAN	4	4	4	4	4	4	4	4		
10	16100-ZW6-681	CARBURETOR ASSY. (BF33C A)	1	-	-	-	-	-	-	-	1024105	
	16100-ZW6-682	CARBURETOR ASSY. (BF33C B)	1	-	-	-	-	-	-	-	1024106	1026043
	16100-ZW6-683	CARBURETOR ASSY. (BF33C C)	1	-	-	-	-	-	-	-	1026044	1043888
	16100-ZW6-684	CARBURETOR ASSY. (BF33C D)	-	1	-	-	-	-	-	-	1053275	

2

Ref. No.	Part No.	Description	Reqd. QTY								Serial No.	Parts catalogue code	
			BF 2B X	BF 2B 2	BF 2.3B 4	BF 2D X	BF 2D 1	BF 2D 2	BF 2D 3	BF 2D 4			
10)	16100-ZW6-003	CARBURETOR ASSY. (BF33A A) ..	-	-	-	1	-	-	-	-	-----	1026043	
	16100-ZW6-013	CARBURETOR ASSY. (BF33A B) ..	-	-	-	1	-	-	-	-	1026044	1043882	
	16100-ZW6-023	CARBURETOR ASSY. (BF33A C) ..	-	-	-	1	-	-	-	-	1043883		
			-	-	-	-	-	1	-	-	-----	1051188	LCD,LCHD,LCHU,LD,LHD,LU,SCD,SCHD,SCHU,SD,SHD SHU,SU
	16100-ZW6-033	CARBURETOR ASSY. (BF33A D) ..	-	-	-	-	-	1	-	-	1051189	1052953	LCD,LCHD,LCHU,LD,LHD,LU,SCD,SCHD,SCHU,SD,SHD SHU,SU
	16100-ZW6-043	CARBURETOR ASSY. (BF33A E) ..	-	-	-	-	-	1	-	-	1052954	-----	LCD,LCHD,LCHU,LD,LHD,LU,SCD,SCHD,SCHU,SD,SHD SHU,SU
			-	-	-	-	-	-	-	1			
	16100-ZW6-686	CARBURETOR ASSY. (BF33C F) ..	1	-	-	-	-	-	-	-	1043889		
			-	1	-	-	-	-	-	-	1053276		
			-	-	1	-	-	-	-	-			
	16100-ZW6-712	CARBURETOR ASSY. (BF33B B) ..	-	-	-	-	1	-	-	-	-----	1043888	
	16100-ZW6-713	CARBURETOR ASSY. (BF33B C) ..	-	-	-	-	1	-	-	-	1043889		
			-	-	-	-	-	1	-	-	-----	1051269	LC,LCHC,SC,SCHC,SHC
	16100-ZW6-714	CARBURETOR ASSY. (BF33B D) ..	-	-	-	-	-	1	-	-	1051270	1052805	LC,LCHC,SC,SCHC,SHC
	16100-ZW6-715	CARBURETOR ASSY. (BF33B E) ..	-	-	-	-	-	1	-	-	1052806	-----	LC,LCHC,SC,SCHC,SHC
			-	-	-	-	-	-	1	-			
11	16166-ZW6-681	NOZZLE, MAIN	1	1	1	-	-	-	-	-			
	16166-ZW6-003 (CARBURETOR NO.)	-	-	-	1	1	-	-	-	-----	BF33A C	LCD,LCHD,LCHU,LD,LHD,LU,SCD,SCHD,SCHU,SD,SHD SHU,SU
			-	-	-	-	-	1	-	-	-----	BF33B C	LC,LCHC,SC,SCHC,SHC
	16166-ZW6-711 (CARBURETOR NO.)	-	-	-	-	-	1	-	-	BF33A D	-----	LCD,LCHD,LCHU,LD,LHD,LU,SCD,SCHD,SCHU,SD,SHD SHU,SU
			-	-	-	-	-	1	-	-	BF33B D	-----	LC,LCHC,SC,SCHC,SHC
			-	-	-	-	-	-	1	1			
12	16211-ZN4-000	INSULATOR, CARBURETOR	1	1	1	1	1	1	1	1			
13	16212-ZM7-000	PACKING, INSULATOR	1	1	1	1	1	1	1	1			
14	16221-ZG0-801	PACKING, CARBURETOR	2	2	2	2	2	2	2	2			
15	16225-ZW6-000	PLATE, CARBURETOR JOINT	1	1	1	1	1	1	1	1			
16	16674-ZW6-000	ROD, CHOKE	1	1	1	1	1	1	1	1			
17	16953-ZW6-003	LEVER, COCK	1	1	1	1	1	1	1	1			
18	16954-ZE1-812	PLATE, LEVER SETTING	1	-	-	-	-	-	-	-	-----	BF33C B	
		(CARBURETOR NO.)	-	-	-	1	-	-	-	-	-----	BF33A A	
	16954-ZW6-003 (CARBURETOR NO.)	1	-	-	-	-	-	-	-	BF33C C		
			-	1	1	-	1	1	1	1			
		(CARBURETOR NO.)	-	-	-	1	-	-	-	-	BF33A B		
19	16956-ZE1-811	SPRING, COCK LEVER	1	1	1	1	1	1	1	1			
20	16957-ZE1-812	PACKING, FUEL COCK	1	1	1	1	1	1	1	1			
21	93500-03006-1H	SCREW, PAN, 3X6	2	-	-	-	-	-	-	-	-----	BF33C B	
		(CARBURETOR NO.)	-	-	-	2	-	-	-	-	-----	BF33A A	
	16082-ZW6-003 (CARBURETOR NO.)	2	-	-	-	-	-	-	-	BF33C C		
			-	2	2	-	2	2	2	2			
		(CARBURETOR NO.)	-	-	-	2	-	-	-	-	BF33A B		
22	93600-05020-0B	SCREW, FLAT, 5X20	2	2	-	2	2	2	-	-	-----	1055559	
	90183-ZW4-000	2	2	-	2	2	2	-	-	1055560		
			-	-	2	-	-	-	2	2			

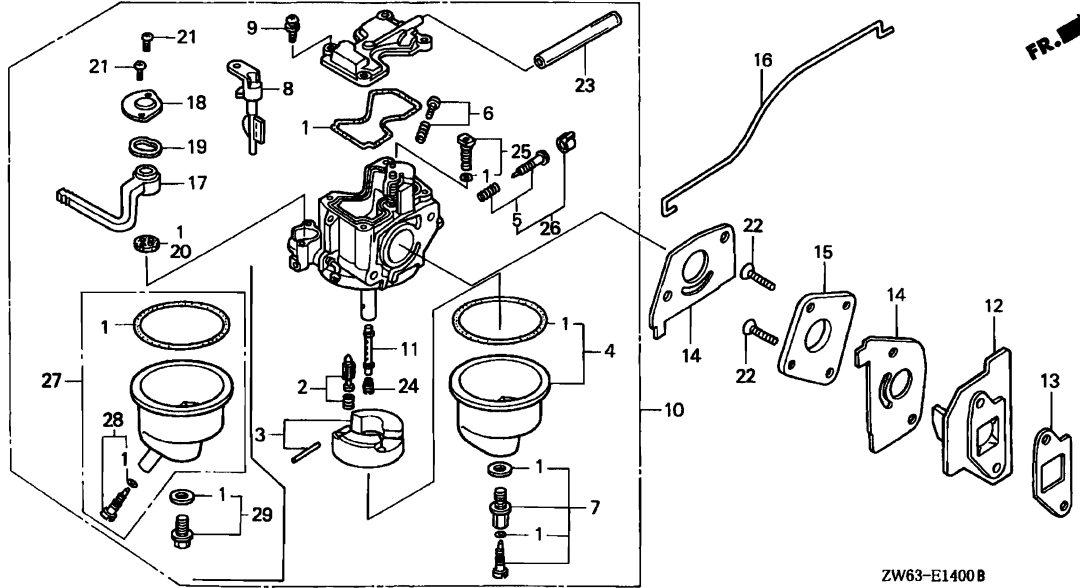




ZW63-E1400B

Ref. No.	Part No.	Description	Reqd. QTY								Serial No.	Parts catalogue code
			BF 2B	BF 2B	BF 2.3B	BF 2D	BF 2D	BF 2D	BF 2D	BF 2D		
23	95003-09010-31	TUBE, VINYL, 4.5X8X100 (95003-09001-60M) (CARBURETOR NO.)	X	2	4	X	1	2	3	4		
		///	-	-	-	1	-	-	-	-	BF33C C	
		///	-	-	-	-	1	-	-	-	BF33A B	
		///	-	-	-	-	-	-	-	-	BF33B B	
	91401-ZW6-003	TUBE, AIR VENT (CARBURETOR NO.)	1	-	-	-	-	-	-	-	BF33C D	
		(CARBURETOR NO.)	-	1	1	-	-	1	1	1	BF33C D	
		(CARBURETOR NO.)	-	-	-	1	-	-	-	-	BF33A C	
		(CARBURETOR NO.)	-	-	-	-	1	-	-	-	BF33B C	
24	99101-ZG0-0600	JET, MAIN, #60	-	-	-	(1)	(1)	(1)	(1)	(1)		
	99101-ZG0-0620	JET, MAIN, #62	-	-	-	(1)	(1)	(1)	(1)	(1)		
	99101-ZG0-0650	JET, MAIN, #65	1	1	1	1	1	1	1	1		
25	99204-ZE0-0350	JET SET, PILOT, #35	1	1	1	1	1	1	1	1		
26	16016-ZV0-E21	SCREW SET (CARBURETOR NO.)	1	-	-	-	-	-	-	-	BF33C B	
	16016-ZW6-711	(CARBURETOR NO.)	1	-	-	-	-	-	-	-	BF33C C	
		(CARBURETOR NO.)	-	1	-	-	-	-	-	-	BF33C E	
		(CARBURETOR NO.)	-	-	-	1	-	-	-	-	BF33C C	
	16016-ZW6-621	(CARBURETOR NO.)	-	-	-	-	1	-	-	-	BF33B D LC,LCHC,SC,SCHC,SHC	
		(CARBURETOR NO.)	1	1	-	-	-	-	-	-	BF33C F	
		(CARBURETOR NO.)	-	-	1	-	-	1	-	-	BF33B D LC,LCHC,SC,SCHC,SHC	

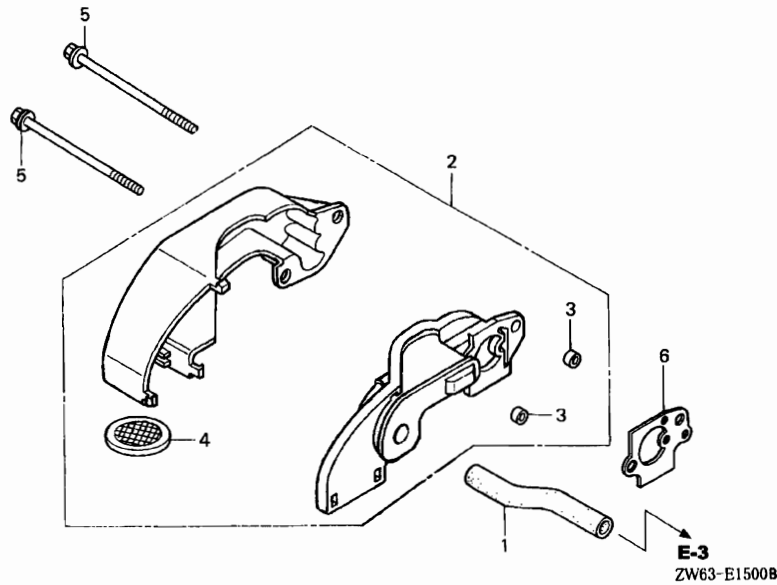
2



ZW63-E1400B

Ref. No.	Part No.	Description	Reqd. QTY								Serial No.	Parts catalogue code
			BF 2B	BF 2B	BF 2.3B	BF 2D	BF 2D	BF 2D	BF 2D	BF 2D		
27	16015-ZW6-611	CHAMBER SET, FLOAT	X	2	4	X	1	2	3	4	BF33C	E
		(CARBURETOR NO.)	-	-	1	-	-	-	1	1	BF33A	E ----- LCD,LCHD,LCHU,LD,LHD,LU,SCD,SCHD,SCHU,SD,SHD SHU,SU
28	16024-ZB9-005	SCREW SET, DRAIN	-	-	-	-	1	-	-	-	BF33B	E ----- LC,LCHC,SC,SCHC,SHC
		(CARBURETOR NO.)	1	1	-	-	-	-	1	1	BF33C	E
29	16028-ZW6-611	SCREW SET	-	-	-	-	1	-	-	-	BF33B	E ----- LCD,LCHD,LCHU,LD,LHD,LU,SCD,SCHD,SCHU,SD,SHD SHU,SU
		(CARBURETOR NO.)	1	1	-	-	-	-	1	1	BF33C	E
		SCREW SET	-	-	-	-	1	-	-	BF33A	E ----- LCD,LCHD,LCHU,LD,LHD,LU,SCD,SCHD,SCHU,SD,SHD SHU,SU	
		(CARBURETOR NO.)	-	-	-	-	1	-	-	BF33B	E ----- LC,LCHC,SC,SCHC,SHC	
		..	-	-	-	-	1	-	-	BF33B	E ----- LC,LCHC,SC,SCHC,SHC	





Service item	F.R.T.
GUIDE, AIR	0.2
.PACKING, AIR GUIDE	
.TRAP, FLAME	
TUBE, BREATHER	0.3

Ref. No.	Part No.	Description	Reqd. QTY								Serial No.	Parts catalogue code
			BF 2B X	BF 2B 2	BF 2.3B 4	BF 2D X	BF 2D 1	BF 2D 2	BF 2D 3	BF 2D 4		
1	15721-ZW6-000	TUBE, BREATHER	1	1	1	1	1	1	1	1		
2	17201-ZW6-000	GUIDE, AIR	1	-	-	1	1	-	-	-	-----	1046412
	17201-ZW6-010	1	-	-	1	1	-	-	-	1046413	
			-	1	1	-	-	1	1	1		
3	17202-ZV0-000	COLLAR, DISTANCE	2	-	-	2	2	-	-	-	-----	1046412
	17202-ZW6-300	2	-	-	2	2	-	-	-	1046413	
			-	2	2	-	-	2	2	2		
4	17203-ZV0-000	TRAP, FLAME	1	1	1	1	1	1	1	1		
5	90001-ZW6-000	BOLT, FLANGE, 5X62	2	2	-	2	2	2	-	-	-----	1055336
	90001-ZW6-010	2	2	-	2	2	2	-	-	1055337	
			-	-	2	-	-	-	2	2		
6	16202-ZW6-000	PACKING, AIR GUIDE	1	-	-	1	1	-	-	-	-----	1046413
			-	1	1	-	-	1	1	1		

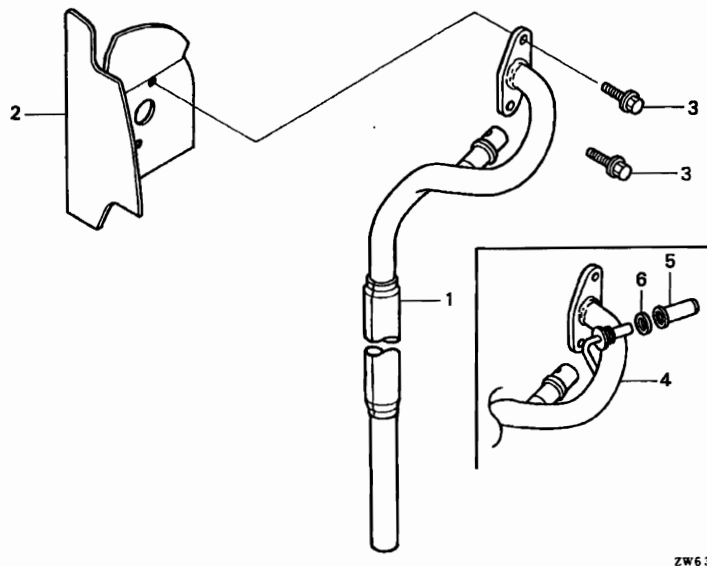
2

FR.

E-16

MUFFLER

E 2



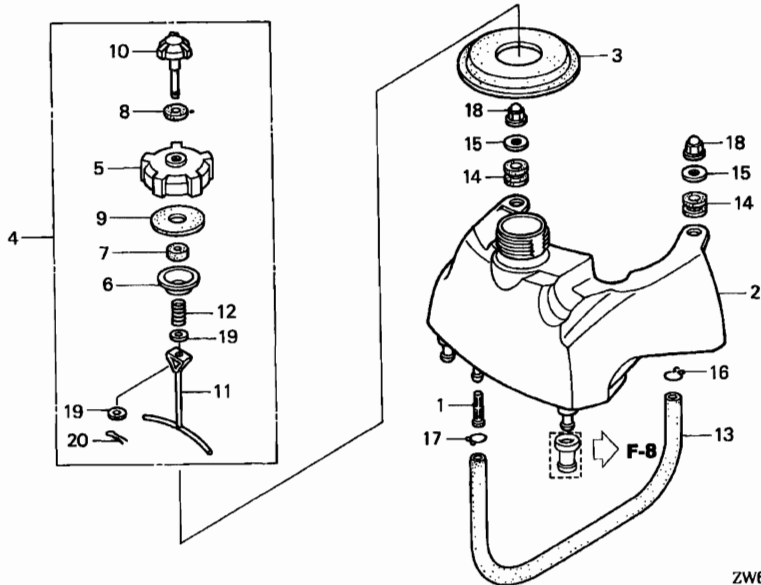
Service item	F.R.T.
GUIDE, AIR EX.	0.4
PIPE COMP., EX.	*1.1

←FR.

ZW63-E1600 A

2

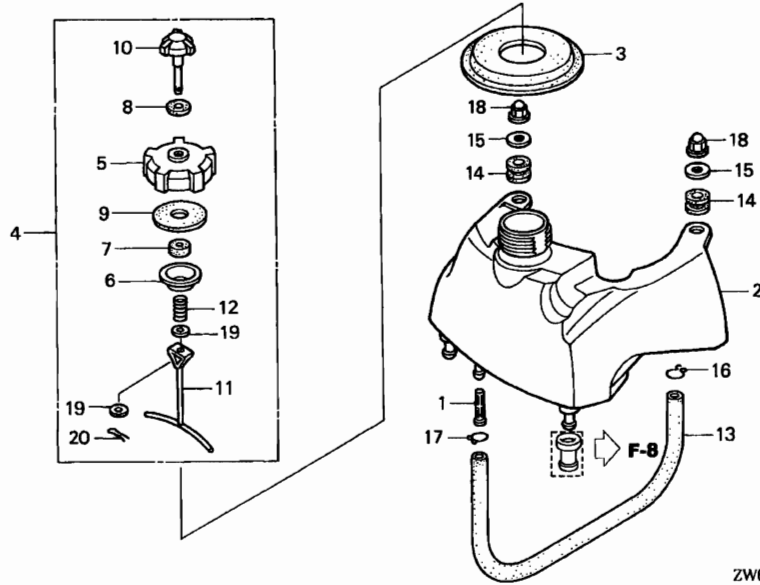
Ref. No.	Part No.	Description	Reqd. QTY								Serial No.	Parts catalogue code
			BF 2B X	BF 2B 2	BF 2.3B 4	BF 2D X	BF 2D 1	BF 2D 2	BF 2D 3	BF 2D 4		
1	18330-ZW6-010	PIPE COMP., EX.	-	-	-	1	1	1	1	1		
2	18515-ZW6-000	GUIDE, AIR EX.	1	1	1	1	1	1	1	1		
3	90003-ZW6-000	BOLT, FLANGE, 5X16	2	-	-	2	2	-	-	-		
	90003-ZW6-010	-	2	-	-	-	2	-	-	-----	1055335
		-	-	2	-	-	-	2	2	-----	1055336
4	18330-ZW6-681	PIPE COMP., EX.	1	-	-	-	-	-	-	-	-----	1026043
	18330-ZW6-682	1	-	-	-	-	-	-	-	-----	1026044
		-	1	1	-	-	-	-	-		
5	18458-881-C40	CAP, SAMPLING PROBE	1	1	1	-	-	-	-	-		
6	90441-035-000	WASHER, SEALING, 14MM	1	1	1	-	-	-	-	-		



Service item	F.R.T.
LINK, FUEL CAP	0.1
.PACKING, FUEL CAP	
.RUBBER A, TANK MOUNTING	
.SPRING, FUEL CAP	
.VALVE COMP., BREATHER (INC. RELATIVE PART)	
STRAINER, FUEL	0.2
.TANK COMP., FUEL	
TUBE, FUEL	0.3

ZW63-E1700B

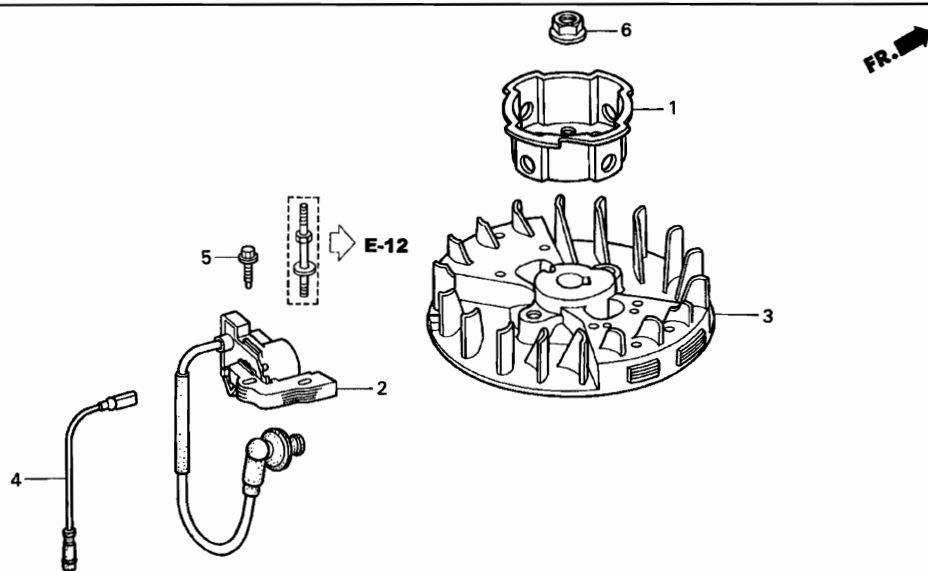
Ref. No.	Part No.	Description	Reqd. QTY								Serial No.	Parts catalogue code
			BF 2B	BF 2B	BF 2.3B	BF 2D	BF 2D	BF 2D	BF 2D	BF 2D		
1	16952-ZE6-000	STRAINER, FUEL	1	1	1	1	1	1	1			
2	17510-ZW6-681	TANK COMP., FUEL	1	1	-	-	-	-	-			
	17511-ZW6-010	TANK, FUEL	-	-	1	1	1	1	1			
3	17515-ZV0-000	RUBBER A, TANK MOUNTING	1	1	1	1	1	1	1			
4	17620-ZV0-010	CAP ASSY., FUEL TANK	1	-	-	1	1	-	-	-----	1046412	
	17620-ZW6-020	1	-	-	1	1	-	-	1046413		
5	17621-ZV0-020	BODY, FUEL CAP	1	1	1	1	1	1	1			
6	17622-ZV0-000	INNER, FUEL CAP	1	1	1	1	1	1	1			
7	17623-ZV0-000	SPONGE, FUEL CAP BREATHER ...	1	1	1	1	1	1	1			
8	17624-ZV0-000	PACKING, VALVE	1	1	1	1	1	1	1			
9	17625-ZV0-000	PACKING, FUEL CAP	1	1	1	1	1	1	1			
10	17626-ZV0-010	VALVE COMP., BREATHER	1	-	-	1	1	-	-	-----	1046412	
	17626-ZW6-000	1	-	-	1	1	-	-	1046413		
			-	1	1	-	-	1	1			
11	17628-ZV0-000	LINK, FUEL CAP	1	1	1	1	1	1	1			
12	17629-ZV0-000	SPRING, FUEL CAP	1	1	1	1	1	1	1			
13	17701-ZW6-000	TUBE, FUEL	1	1	1	1	1	1	1			
14	80105-MG9-000	CUSHION, AIR CLEANER	2	2	2	2	2	2	2			
15	90545-323-700	WASHER, 6.5X18	2	2	-	2	2	2	2			
	90403-ZW6-000	-	-	2	-	-	-	2			
16	90602-ZV0-000	CLIP, TUBE (B10)	1	1	1	1	1	1	1			
17	90604-ZV0-000	CLIP, TUBE (B12)	1	1	1	1	1	1	1			
18	94021-06020-0S	NUT, CAP, 6MM	2	2	2	2	2	2	2			
19	94101-04200	WASHER, PLAIN, 4MM	2	-	-	2	2	-	-	-----	1046412	



ZW63-E1700B

Ref. No.	Part No.	Description	Reqd. QTY								Serial No.	Parts catalogue code	
			BF 2B X	BF 2B 2	BF 2.3B 4	BF 2D X	BF 2D 1	BF 2D 2	BF 2D 3	BF 2D 4			
19)	90402-ZW6-000	WASHER, PLAIN, 4MM	2	-	-	2	2	-	-	-	-	1046413	
20	94251-04000	PIN, LOCK, 4MM	1	-	-	1	1	-	-	-	-	1046412	
	90701-ZW6-000	1	-	-	1	1	-	-	-	-	1046413	
			-	1	1	-	-	1	1	1			





ZW63-E1900B

Service item	F.R.T.
CORD, STOP SWITCH	0.3
.PULLEY, STARTER	
COIL ASSY., IGNITION	0.4
.FLYWHEEL COMP.	

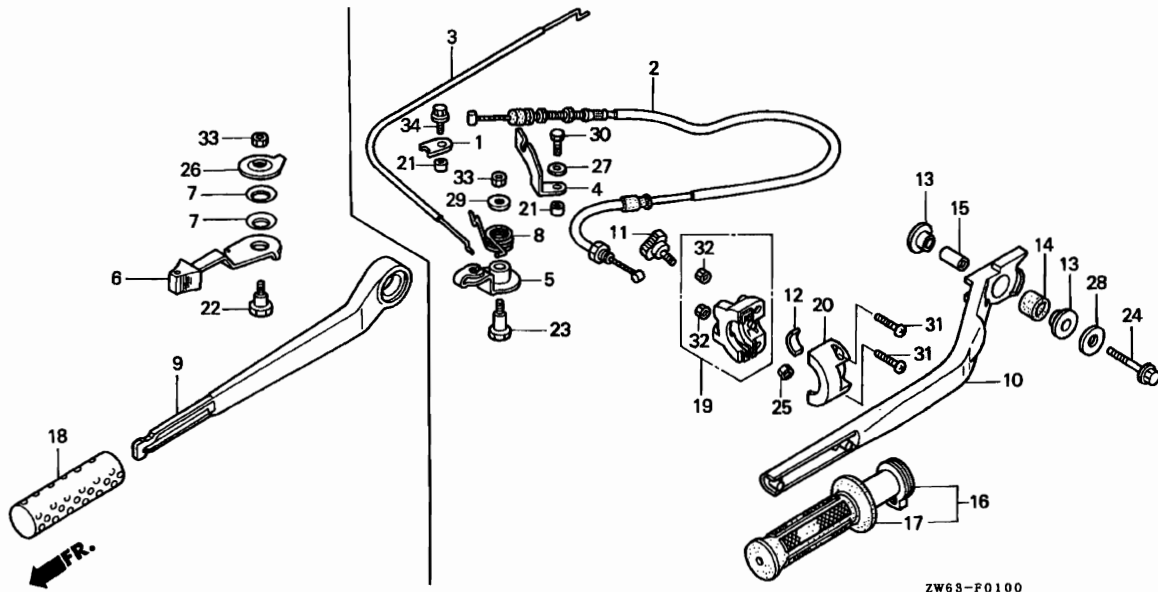
Ref. No.	Part No.	Description	Reqd. QTY								Serial No.	Parts catalogue code
			BF 2B	BF 2B	BF 2.3B	BF 2D	BF 2D	BF 2D	BF 2D	BF 2D		
1	28451-ZW6-003	PULLEY, STARTER	1	1	1	1	1	1	1			
2	30500-ZW6-004	COIL ASSY., IGNITION	1	1	1	1	1	1	1			
3	31110-ZW6-004	FLYWHEEL COMP.	1	1	1	1	1	1	1			
4	32195-ZW6-000	CORD, STOP SWITCH	1	1	1	1	1	1	1			
5	90004-ZC3-000	BOLT, FLANGE, 5X20	1	1	-	1	1	1	-	-----	1055496	
	90004-ZW4-000	BOLT, FLANGE, 5X20(CT200) ...	1	1	-	1	1	1	-	1055497		
			-	-	1	-	-	-	1	1		
6	90373-SPO-000	NUT, FLANGE, 10MM	1	1	-	1	1	1	-	-----	1055852	
	90305-ZW4-000	1	1	-	1	1	1	-	1055853		
			-	-	1	-	-	-	1	1		

2

F-1

STEERING HANDLE

F 1

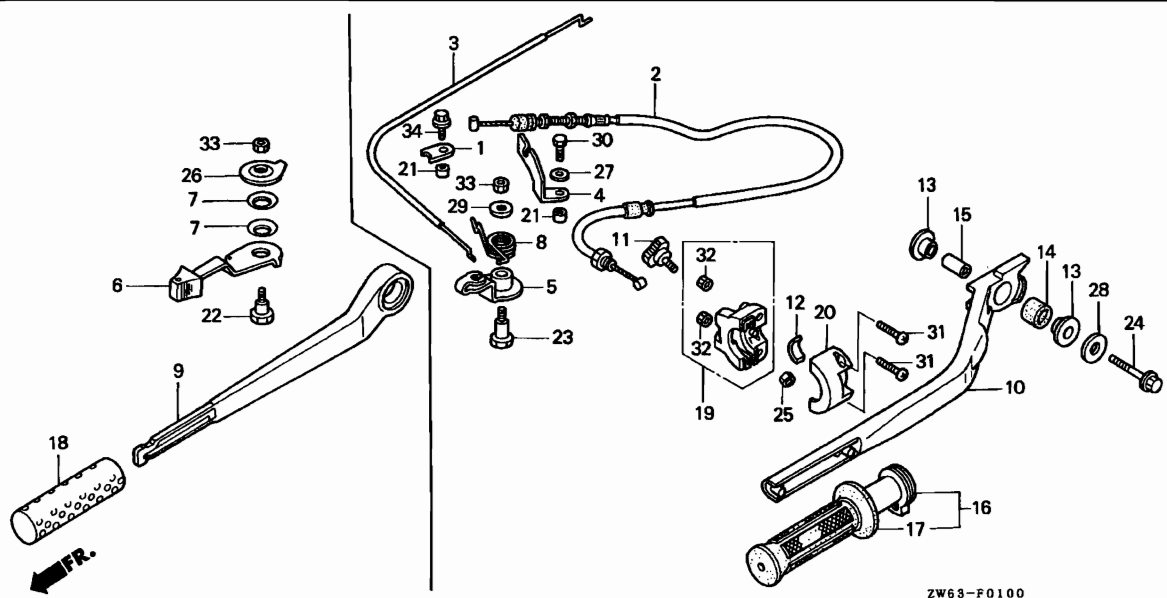


Service item	F.R.T.
BLOCK, THROTTLE FRICTION	0.1
.GRIP, R. HANDLE	
.HOUSING, UNDER THROTTLE	
.HOUSING, UPPER THROTTLE	
.LEVER, THROTTLE	
.RUBBER, HANDLE MOUNTING	
.SPRING, THROTTLE ARM	
ARM COMP., THROTTLE	0.2
.CABLE COMP., THROTTLE (REF NO,3)	
.HANDLE, STEERING	
CABLE COMP., THROTTLE	0.3
(REF NO,2)	

ZW68-F0100

Ref. No.	Part No.	Description	Reqd. QTY								Serial No.	Parts catalogue code	
			BF 2B	BF 2B	BF 2.3B	BF 2D	BF 2D	BF 2D	BF 2D	BF 2D			
1	16576-ZV0-000	HOLDER, CABLE	1	-	-	-	-	-	-	-	-	1001307	
	16576-ZW6-010	-	-	-	1	-	-	-	-	-	1003693	LD,LHD,LU,SD,SHD,SHU,SU
			-	-	-	1	-	-	-	-	-	1019361	LCD,LCHD,LCHU,SCD,SCHD,SCHU
			-	1	-	-	1	1	1	-	-	1001308	
			-	-	-	1	-	-	-	-	-	1003694	LD,LHD,LU,SD,SHD,SHU,SU
			-	-	-	1	-	-	-	-	-	1019362	LCD,LCHD,LCHU,SCD,SCHD,SCHU
2	17910-ZW6-702	CABLE COMP., THROTTLE (A) ...	1	1	1	1	1	1	1	1	1		LCHC,LCHD,LCHG,LCHU,LHD,SCHC,SCHD,SCHG,SCHU
													SHC,SHD,SHU
3	17920-ZW6-000	CABLE COMP., THROTTLE (B) ...	1	1	1	1	1	1	1	1	1		
4	17921-ZV1-010	HOLDER, CABLE	1	-	-	-	1	1	-	-	-		LCHC,LCHG,SCHC,SCHG,SHC
			-	-	-	1	-	-	-	-	-		LCHD,LCHU,LHD,SCHD,SCHU,SHD,SHU
	17921-ZV1-020	-	1	1	-	-	-	1	1	-		LCHC,LCHG,SCHC,SCHG,SHC,SHD
			-	-	-	-	-	1	-	1	-		LCHD,LCHU,LHD,SCHD,SCHU,SHU
5	17930-ZW6-700	ARM COMP., THROTTLE	1	1	1	1	1	1	1	1	1		LCHC,LCHD,LCHG,LCHU,LHD,SCHC,SCHD,SCHG,SCHU
													SHC,SHD,SHU
6	17931-ZW6-000	LEVER, THROTTLE	1	1	1	1	1	1	1	1	1		LC,LCD,LCG,LD,LU,SC,SCD,SCG,SD,SU
7	17932-ZV0-000	SPRING, LEVER	2	2	2	2	2	2	2	2	2		LC,LCD,LCG,LD,LU,SC,SCD,SCG,SD,SU
8	17932-ZW6-700	SPRING, THROTTLE ARM	1	1	1	1	1	1	1	1	1		LCHC,LCHD,LCHG,LCHU,LHD,SCHC,SCHD,SCHG,SCHU
													SHC,SHD,SHU
9	53101-ZW6-000ZA	HANDLE, STEERING											
	NH246.....	LOOSEY GRAY	1	1	1	1	1	1	1	1	1		LC,LCD,LCG,LD,LU,SC,SCD,SCG,SD,SU
10	53101-ZW6-700ZA	HANDLE, STEERING											
	NH246.....	LOOSEY GRAY	1	1	1	1	1	1	1	1	1		LCHC,LCHD,LCHG,LCHU,LHD,SCHC,SCHD,SCHG,SCHU
													SHC,SHD,SHU

3



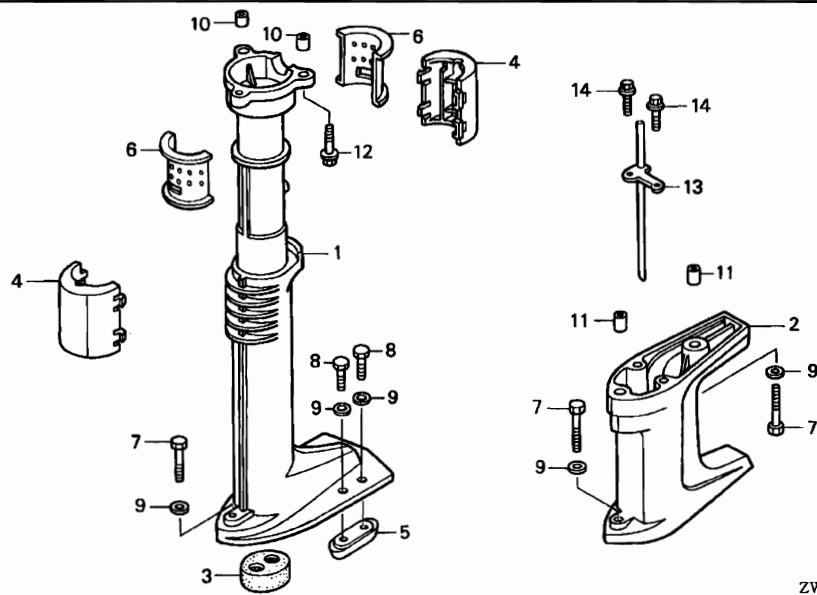
ZW68-F0100

3

Ref. No.	Part No.	Description	Reqd. QTY								Serial No.	Parts catalogue code
			BF 2B X	BF 2B 2	BF 2.3B 4	BF 2D X	BF 2D 1	BF 2D 2	BF 2D 3	BF 2D 4		
11	53104-ZW6-700	BOLT, FRICTION	1	1	1	1	1	1	1	1	-----	LCHC,LCHD,LCHG,LCHU,LHD,SCHC,SCHD,SCHG,SCHU SHC,SHD,SHU
12	53106-ZW6-700	BLOCK, THROTTLE FRICTION	1	1	1	1	1	1	1	1	-----	LCHC,LCHD,LCHG,LCHU,LHD,SCHC,SCHD,SCHG,SCHU SHC,SHD,SHU
13	53107-ZV0-000	COLLAR, HANDLE MOUNTING	2	2	2	2	2	2	2	2	-----	
14	53108-ZV0-000	RUBBER, HANDLE MOUNTING	1	1	1	1	1	1	1	1	-----	
15	53109-ZV0-000	COLLAR, DISTANCE	1	1	1	1	1	1	1	1	-----	
16	53140-GW0-000	GRIP COMP., THROTTLE	1	1	1	1	1	1	1	1	-----	LCHC,LCHD,LCHG,LCHU,LHD,SCHC,SCHD,SCHG,SCHU SHC,SHD,SHU
17	53165-GW0-000	GRIP, R. HANDLE	1	1	1	1	1	1	1	1	-----	LCHC,LCHD,LCHG,LCHU,LHD,SCHC,SCHD,SCHG,SCHU SHC,SHD,SHU
18	53165-ZV0-000	GRIP, LEVER	1	1	1	1	1	1	1	1	-----	LC,LCD,LCG,LD,LU,SC,SCD,SCG,SD,SU
19	53167-ZW6-700	HOUSING, UNDER THROTTLE	1	-	-	-	-	-	-	-	-----	1001307 LCHG,SCHG
			-	-	-	1	-	-	-	-	-----	1003713 LHD,SHD,SHU
			-	-	-	1	-	-	-	-	-----	1019361 LCHD,LCHU,SCHD,SCHU
	53167-ZW6-701	1	-	-	-	-	-	-	-	-----	1001308 LCHG,SCHG
			-	1	1	-	1	1	1	1	-----	LCHC,LCHD,LCHG,LCHU,LHD,SCHC,SCHD,SCHG,SCHU SHC,SHD,SHU
			-	-	-	1	-	-	-	-	-----	1003714 LHD,SHD,SHU
			-	-	-	1	-	-	-	-	-----	1019362 LCHD,LCHU,SCHD,SCHU
20	53168-GAH-700	HOUSING, UPPER THROTTLE	1	1	1	1	1	1	1	1	-----	LCHC,LCHD,LCHG,LCHU,LHD,SCHC,SCHD,SCHG,SCHU SHC,SHD,SHU
21	77235-GC2-000	COLLAR, SEAT CATCH	1	1	1	1	1	1	1	1	-----	LC,LCD,LCG,LD,LU,SC,SCD,SCG,SD,SU
			2	2	2	2	2	2	2	2	-----	LCHC,LCHD,LCHG,LCHU,LHD,SCHC,SCHD,SCHG,SCHU SHC,SHD,SHU
22	90008-ZV0-000	BOLT, HEX., 6X16	1	1	1	1	1	1	1	1	-----	LC,LCD,LCG,LD,LU,SC,SCD,SCG,SD,SU

Ref. No.	Part No.	Description	Reqd. QTY								Serial No.	Parts catalogue code	
			BF 2B X	BF 2B 2	BF 2.3B 4	BF 2D X	BF 2D 1	BF 2D 2	BF 2D 3	BF 2D 4			
23	90101-ZW6-700	BOLT, HEX., 6X24	1	1	1	1	1	1	1	1	-----	-----	LCHC,LCHD,LCHG,LCHU,LHD,SCHC,SCHD,SCHG,SCHU SHC,SHD,SHU
24	90105-ZV0-000	BOLT, FLANGE, 8X40	1	1	1	1	1	1	1	1	-----	-----	
25	90301-782-000	NUT, U, 6MM	1	-	-	-	-	-	-	-	-----	1001711	LCHG,SCHG
			-	-	-	1	-	-	-	-	-----	1005157	LCHD,LCHU,LHD,SCHD,SCHU,SHD,SHU
			-	-	-	-	1	-	-	-	-----	1200513	LCHC,SCHC,SHC
	94001-06490-0S	NUT, HEX., 6MM	1	-	-	-	-	-	-	-	-----	1001712	LCHG,SCHG
			-	1	-	-	-	1	1	-	-----	-----	LCHC,LCHD,LCHG,LCHU,LHD,SCHC,SCHD,SCHG,SCHU SHC,SHD,SHU
			-	-	1	-	-	-	-	1	-----	-----	
			-	-	-	1	-	-	-	-	-----	1005158	LCHD,LCHU,LHD,SCHD,SCHU,SHD,SHU
			-	-	-	-	1	-	-	-	-----	1200514	LCHC,SCHC,SHC
26	90481-ZV0-000	WASHER, CONTROL LEVER	1	1	1	1	1	1	1	1	-----	-----	LC,LCD,LCG,LD,LU,SC,SCD,SCG,SD,SU
27	90504-921-010	WASHER, PLAIN, 6MM	-	-	-	1	-	-	-	-	-----	1000526	LHD,SHD
			-	-	-	1	-	-	-	-	-----	1003328	LCHD,LCHU,SCHD,SCHU
28	90508-ZV0-000	WASHER, 12.5X32	1	1	1	1	1	1	1	1	-----	-----	
29	90511-ZV4-000	WASHER, PLAIN, 6MM	1	1	1	1	1	1	1	1	-----	-----	LCHC,LCHD,LCHG,LCHU,LHD,SCHC,SCHD,SCHG,SCHU SHC,SHD,SHU
30	92101-06014-4J	BOLT, HEX., 6X14	1	1	1	1	1	1	1	1	-----	-----	LCHC,LCHD,LCHG,LCHU,LHD,SCHC,SCHD,SCHG,SCHU SHC,SHD,SHU
31	93500-05020-4J	SCREW, PAN, 5X20	2	2	2	2	2	2	2	2	-----	-----	LCHC,LCHD,LCHG,LCHU,LHD,SCHC,SCHD,SCHG,SCHU SHC,SHD,SHU
32	94001-05020-0S	NUT, HEX., 5MM	2	-	-	-	-	-	-	-	-----	1001307	LCHG,SCHG
			-	-	-	2	-	-	-	-	-----	1003713	LHD,SHD,SHU
			-	-	-	2	-	-	-	-	-----	1019361	LCHD,LCHU,SCHD,SCHU
	94001-05490-0S	2	-	-	-	-	-	-	-	-----	1001308	LCHG,SCHG
			-	2	2	-	2	2	2	2	-----	-----	LCHC,LCHD,LCHG,LCHU,LHD,SCHC,SCHD,SCHG,SCHU SHC,SHD,SHU
			-	-	-	2	-	-	-	-	-----	1003714	LHD,SHD,SHU
			-	-	-	2	-	-	-	-	-----	1019362	LCHD,LCHU,SCHD,SCHU
33	94001-06020-0S	NUT, HEX., 6MM	1	-	-	1	1	-	-	-	-----	-----	
			-	1	-	-	-	-	-	-	-----	1300216	
			-	-	-	-	-	1	-	-	-----	1300867	LC,LD,LHD,LU,SC,SD,SHC,SHD,SHU,SU
			-	-	-	-	-	1	-	-	-----	1304158	LCD,LCHC,LCHD,LCHU,SCD,SCHC,SCHD,SCHU
	90302-ZW4-000	-	1	-	-	-	-	-	-	-----	1300217	
			-	-	1	-	-	-	1	1	-----	-----	
			-	-	-	-	-	1	-	-	-----	1300868	LC,LD,LHD,LU,SC,SD,SHC,SHD,SHU,SU
			-	-	-	-	-	1	-	-	-----	1304159	LCD,LCHC,LCHD,LCHU,SCD,SCHC,SCHD,SCHU
34	95701-06012-02	BOLT, FLANGE, 6X12	1	-	-	1	1	-	-	-	-----	-----	
			-	1	-	-	-	-	-	-	-----	1300216	
			-	-	-	-	-	1	-	-	-----	1300867	LC,LD,LHD,LU,SC,SD,SHC,SHD,SHU,SU
			-	-	-	-	-	1	-	-	-----	1304158	LCD,LCHC,LCHD,LCHU,SCD,SCHC,SCHD,SCHU
	90056-ZY3-000	-	1	-	-	-	-	-	-	-----	1300217	
			-	-	1	-	-	-	1	1	-----	-----	
			-	-	-	-	-	1	-	-	-----	1300868	LC,LD,LHD,LU,SC,SD,SHC,SHD,SHU,SU
			-	-	-	-	-	1	-	-	-----	1304159	LCD,LCHC,LCHD,LCHU,SCD,SCHC,SCHD,SCHU



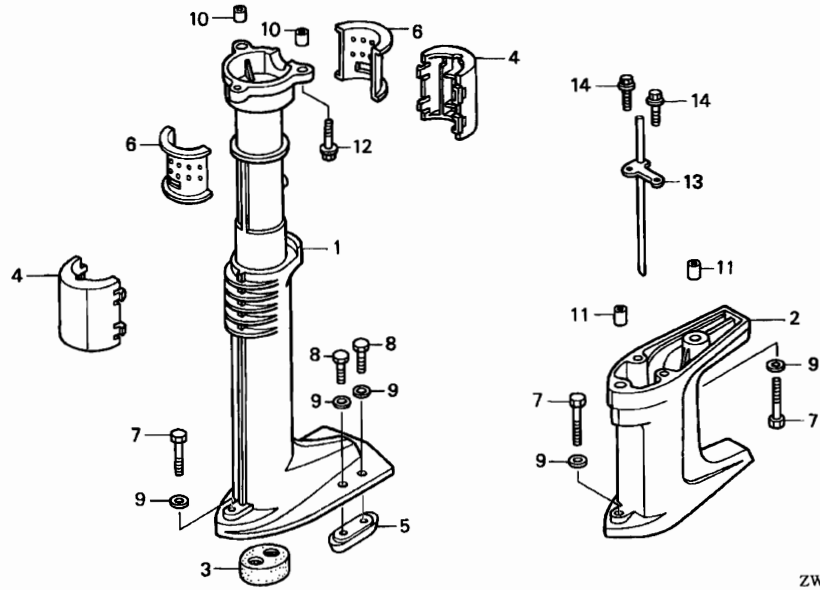


Service item	F.R.T.
METAL, ANODE	0.1
.PROTECTOR, EXTENSION	
LINER, SWIVEL CASE	0.2
BUSH COMP., VERTICAL SHAFT ...	0.4
.SEPARATOR, EXTENSION	
.TUBE COMP., WATER	
CASE, EXTENSION	0.5

ZW63-F0300B

3

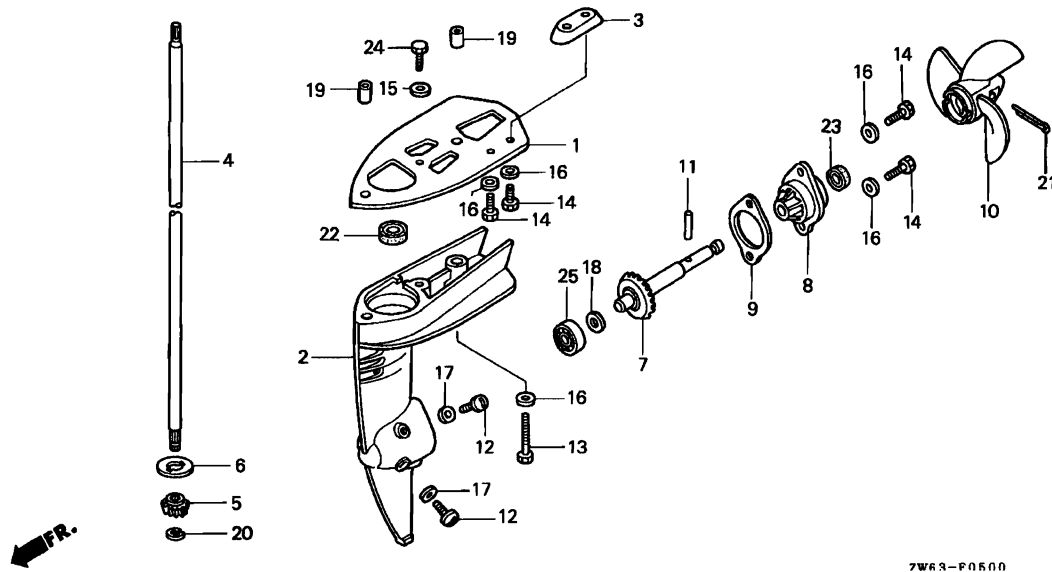
Ref. No.	Part No.	Description	Reqd. QTY								Serial No.	Parts catalogue code	
			BF 2B X	BF 2B 2	BF 2.3B 4	BF 2D X	BF 2D 1	BF 2D 2	BF 2D 3	BF 2D 4			
1	40201-ZW6-000ZA	CASE, EXTENSION *NH246*.....LOOSEY GRAY	1	-	-	-	-	-	-	-	-	1001711	
												1005157	LD,LHD,LU,SD,SHD,SHU,SU
												1031674	LCD,LCHD,LCHU,SCD,SCHD,SCHU
												1200477	LC,SC,SHC
												1202057	LCHC,SCHC
	40201-ZW6-010ZA	*NH246*.....LOOSEY GRAY	1	-	-	-	-	-	-	-	1001712		
			-	1	1	-	-	1	1	1		1005158	LD,LHD,LU,SD,SHD,SHU,SU
			-	-	-	1	-	-	-	-		1031675	LCD,LCHD,LCHU,SCD,SCHD,SCHU
			-	-	-	-	1	-	-	-		1200478	LC,SC,SHC
			-	-	-	-	1	-	-	-		1202058	LCHC,SCHC
2	40202-ZW6-610ZA	SEPARATOR, EXTENSION *NH246*.....LOOSEY GRAY	1	1	1	1	1	1	1	1			LC,LCD,LCG,LCHC,LCHD,LCHG,LCHU,LD,LHD,LU
3	40210-ZW6-000	BUSH COMP., VERTICAL SHAFT (S)	1	1	1	1	1	1	1	1			SC,SCD,SCG,SCHC,SCHD,SCHG,SCHU,SD,SHC,SHD,SHU SU
	40210-ZW6-611	BUSH COMP., VERTICAL SHAFT (L)	1	1	1	1	1	1	1	1			LC,LCD,LCG,LCHC,LCHD,LCHG,LCHU,LD,LHD,LU
4	40218-ZW6-000	PROTECTOR, EXTENSION	2	2	2	2	2	2	2	2			
5	41106-ZV4-650	METAL, ANODE	1	1	1	1	1	1	1	1			SC,SCD,SCG,SCHC,SCHD,SCHG,SCHU,SD,SHC,SHD,SHU SU
6	50211-ZV0-000	LINER, SWIVEL CASE	2	2	2	2	2	2	2	2			SC,SCD,SCG,SCHC,SCHD,SCHG,SCHU,SD,SHC,SHD,SHU SU
7	90113-ZV0-000	BOLT, HEX., 6X35	1	1	1	1	1	1	1	1			
													LC,LCD,LCG,LCHC,LCHD,LCHG,LCHU,LD,LHD,LU
8	90127-ZV4-000	BOLT, HEX., 6X16	2	2	2	2	2	2	2	2			SC,SCD,SCG,SCHC,SCHD,SCHG,SCHU,SD,SHC,SHD,SHU SU
9	90506-ZV4-000	WASHER, PLAIN, 6MM	3	3	3	3	3	3	3	3			



ZW63- F0300B

Ref. No.	Part No.	Description	Reqd. QTY								Serial No.	Parts catalogue code
			BF 2B X	BF 2B 2	BF 2.3B 4	BF 2D X	BF 2D 1	BF 2D 2	BF 2D 3	BF 2D 4		
10	94301-08100	DOWEL PIN, 8X10	2	2	2	2	2	2	2			
11	94301-08140	DOWEL PIN, 8X14	2	2	2	2	2	2	2	-----	LC,LCD,LCG,LCHC,LCHD,LCHG,LCHU,LD,LHD,LU	
12	95701-06025-02	BOLT, FLANGE, 6X25	3	-	-	-	-	-	-	1001307	-----	
			-	-	-	3	-	-	-	1003713	LD,LHD,LU,SD,SHD,SHU,SU	
			-	-	-	3	-	-	-	1019361	LCD,LCHD,LCHU,SCD,SCHD,SCHU	
	90102-ZW6-000		3	-	-	-	-	-	-	1001308		
			-	3	3	-	3	3	3			
			-	-	-	3	-	-	-	1003714	-----	
			-	-	-	3	-	-	-	1019362	-----	
13	19251-ZW6-610	TUBE COMP., WATER	1	1	1	1	1	1	1	-----	LC,LCD,LCG,LCHC,LCHD,LCHG,LCHU,LD,LHD,LU	
14	92101-05016-4J	BOLT, HEX., 5X16	2	2	2	2	2	2	2	-----	LC,LCD,LCG,LCHC,LCHD,LCHG,LCHU,LD,LHD,LU	





ZW63-F0500

Service item	F.R.T.
PROPELLER COMP., THREE BLADES	0.1
HOLDER ASSY., PROPELLER SHAFT	0.2
.PACKING, PROPELLER SHAFT HOLDER	
.WATER SEAL, 11X21X8 (REF NO,23)	
BEARING, RADIAL BALL, 6000 ...	0.3
.GEAR, PINION	
.SHAFT COMP., PROPELLER	
CASE COMP., GEAR	0.4
.PLATE, CAVITATION	
.WATER SEAL, 11X21X8 (REF NO,22)	
SHAFT, VERTICAL	0.5

Ref. No.	Part No.	Description	Reqd. QTY								Serial No.	Parts catalogue code
			BF 2B	BF 2B	BF 2.3B	BF 2D	BF 2D	BF 2D	BF 2D	BF 2D		
1	40205-ZW6-610ZA	PLATE, CAVITATION *NH246*.....LOOSEY GRAY	1	1	1	1	1	1	1	1	-----	----- LC,LCD,LCG,LCHC,LCHD,LCHG,LCHU,LD,LHD,LU
2	41100-ZW6-000ZA	CASE COMP., GEAR *NH246*.....LOOSEY GRAY	1	-	-	-	-	-	-	-	-----	1001307
			-	-	-	1	-	-	-	-	-----	1003693 LD,LHD,LU,SD,SHD,SHU,SU
			-	-	-	1	-	-	-	-	-----	1019361 LCD,LCHD,LCHU,SCD,SCHD,SCHU
	41100-ZW6-010ZA	*NH246*.....LOOSEY GRAY	1	-	-	-	-	-	-	-	1001308	
			-	1	1	-	1	1	1	1	-	
			-	-	-	1	-	-	-	-	1003694	----- LD,LHD,LU,SD,SHD,SHU,SU
			-	-	-	1	-	-	-	-	1019362	----- LCD,LCHD,LCHU,SCD,SCHD,SCHU
3	41106-ZV4-650	METAL, ANODE	1	1	1	1	1	1	1	1	-----	----- LC,LCD,LCG,LCHC,LCHD,LCHG,LCHU,LD,LHD,LU
4	41112-ZW6-000	SHAFT, VERTICAL (S)	1	-	-	-	-	-	-	-	-----	1001307 SCG,SCHG
			-	-	-	1	-	-	-	-	-----	1003693 SD,SHD,SHU,SU
			-	-	-	1	-	-	-	-	-----	1019361 SCD,SCHD,SCHU
	41112-ZW6-610	SHAFT, VERTICAL (L)	1	-	-	-	-	-	-	-	-----	1001307 LCG,LCHG
			-	-	-	1	-	-	-	-	-----	1003693 LD,LHD,LU
			-	-	-	1	-	-	-	-	-----	1019361 LCD,LCHD,LCHU
	41112-ZW6-010	SHAFT, VERTICAL (S)	1	-	-	-	-	-	-	-	1001308	----- SCG,SCHG
			-	1	1	-	1	1	1	1	-----	----- SC,SCD,SCG,SCHC,SCHD,SCHG,SCHU,SD,SHC,SHD,SHU
			-	-	-	1	-	-	-	-	1003694	----- SD,SHD,SHU,SU
			-	-	-	1	-	-	-	-	1019362	----- SCD,SCHD,SCHU
	41112-ZW6-611	SHAFT, VERTICAL (L)	1	-	-	-	-	-	-	-	1001308	----- LCG,LCHG
			-	1	1	-	1	1	1	1	-----	----- LC,LCD,LCG,LCHC,LCHD,LCHG,LCHU,LD,LHD,LU
			-	-	-	1	-	-	-	-	1003694	----- LD,LHD,LU
			-	-	-	1	-	-	-	-	1019362	----- LCD,LCHD,LCHU
5	41131-ZW6-000	GEAR, PINION	1	1	1	1	1	1	1	1		

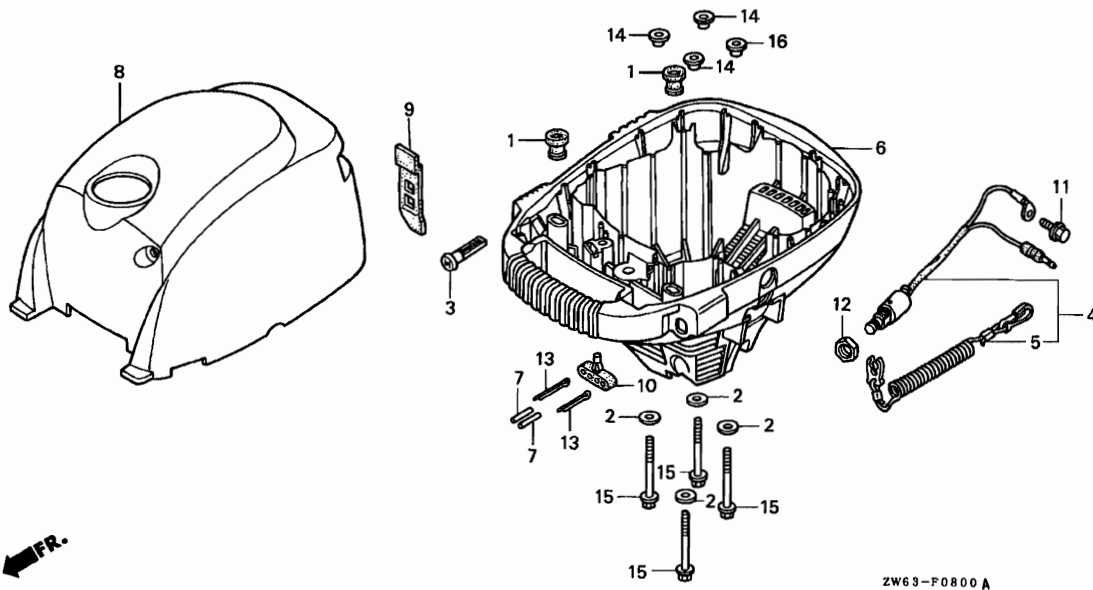
3

Ref. No.	Part No.	Description	Reqd. QTY								Serial No.	Parts catalogue code
			BF 2B X	BF 2B 2	BF 2.3B 4	BF 2D X	BF 2D 1	BF 2D 2	BF 2D 3	BF 2D 4		
6	41135-ZV0-000	WASHER, PINION THRUST	1	1	1	1	1	1	1	1		
7	41160-ZW6-000	SHAFT COMP., PROPELLER	1	1	1	1	1	1	1	1		
8	41200-ZW6-000ZA	HOLDER ASSY., PROPELLER SHAFT *NH246*.....LOOSEY GRAY	1	1	1	1	1	1	1	1		
9	41281-ZV0-850	PACKING, PROPELLER SHAFT HOLDER	1	1	1	1	1	1	1	1		
10	58130-ZV0-841ZB	PROPELLER COMP., THREE BLADES *NH283*.....STIN GRAY	1	1	1	1	1	1	1	1		
11	58131-ZV0-000	PIN, SHEAR	1	1	1	1	1	1	1	1		
12	90105-ZV4-650	BOLT, OIL CHECK, 8X8	2	2	2	2	2	2	2	2		
13	90113-ZV0-000	BOLT, HEX., 6X35	1	1	1	1	1	1	1	1		
14	90127-ZV4-000	BOLT, HEX., 6X16	2	2	2	2	2	2	2	2	-----	SC,SCD,SCG,SCHC,SCHD,SCHG,SCHU,SD,SHC,SHD,SHU SU
15	90504-921-010	WASHER, PLAIN, 6MM	1	1	1	1	1	1	1	1	-----	LC,LCD,LCG,LCHC,LCHD,LCHG,LCHU,LD,LHD,LU LC,LCD,LCG,LCHC,LCHD,LCHG,LCHU,LD,LHD,LU
16	90506-ZV4-000	WASHER, PLAIN, 6MM	3	3	3	3	3	3	3	3	-----	SC,SCD,SCG,SCHC,SCHD,SCHG,SCHU,SD,SHC,SHD,SHU SU
17	90507-921-000	WASHER, NYLON, 8MM	5	5	5	5	5	5	5	5	-----	LC,LCD,LCG,LCHC,LCHD,LCHG,LCHU,LD,LHD,LU
18	90531-ZV0-000	WASHER, GEAR (A)(1.00)	1	1	1	1	1	1	1	1		
	90532-ZV0-000	WASHER, GEAR (B)(1.05)	1	1	1	1	1	1	1	1		
	90533-ZV0-000	WASHER, GEAR (C)(1.10)	1	1	1	1	1	1	1	1		
	90534-ZV0-000	WASHER, GEAR (D)(1.15)	1	1	1	1	1	1	1	1		
	90535-ZV0-000	WASHER, GEAR (E)(1.20)	1	1	1	1	1	1	1	1		
19	94301-08140	DOWEL PIN, 8X14	2	2	2	2	2	2	2	2		
20	90755-SB2-000	E-RING, 6MM	1	1	1	1	1	1	1	1		
21	90757-ZV0-000	PIN, SPLIT, 3MM	1	1	1	1	1	1	1	1		
22	91251-ZV0-003	WATER SEAL, 11X21X8	1	1	1	1	1	1	1	1		
23	91253-ZV0-003	WATER SEAL, 11X21X8	1	1	1	1	1	1	1	1		
24	92101-06012-4J	BOLT, HEX., 6X12	1	1	1	1	1	1	1	1	-----	LC,LCD,LCG,LCHC,LCHD,LCHG,LCHU,LD,LHD,LU
25	96100-60000-00	BEARING, RADIAL BALL, 6000 ..	1	1	1	1	1	1	1	1		



F-8

ENGINE CASE



Service item	F.R.T.
COVER, ENGINE	0.1
.KNOB, CHOKE	
RUBBER, TANK MOUNTING	0.2
.SWITCH ASSY., EMERGENCY STOP	
CASE COMP., ENGINE UNDER	*1.4

ZW63-P0800A

Ref. No.	Part No.	Description	Reqd. QTY								Serial No.	Parts catalogue code
			BF 2B X	BF 2B	BF 2.3B 4	BF 2D X	BF 2D 1	BF 2D 2	BF 2D 3	BF 2D 4		
1	17514-ZV0-000	RUBBER, TANK MOUNTING (C) ...	2	2	2	2	2	2	2			
2	17936-921-000	WASHER, PIVOT	4	4	4	4	4	4	4			
3	17951-ZG1-000	KNOB, CHOKE	1	1	1	1	1	1	1			
4	35180-ZW6-003	SWITCH ASSY., EMERGENCY STOP	1	1	1	1	1	1	1			
5	36182-ZV4-650	CORD COMP., EMERGENCY	1	1	1	1	1	1	1			
6	40100-ZW6-000	CASE COMP., ENGINE UNDER	1	-	-	-	-	-	-	-----	1001307	
						1	-	-	-	-----	1003693 LD,LHD,LU,SD,SHD,SHU,SU	
										-----	1019361 LCD,LCHD,LCHU,SCD,SCHD,SCHU	
40100-ZW6-010		1	-	-	-	-	-	-	1001308	1001711	
						1	-	-	-	1003694	1005157 LD,LHD,LU,SD,SHD,SHU,SU	
							1	-	-	1019362	1031667 LCD,LCHD,LCHU,SCD,SCHD,SCHU	
								1	-	-----	1200477 LC,SC,SHC	
									1	-----	1201787 LCHC,SCHC	
40100-ZW6-020		1	-	-	-	-	-	-	1001712		
				1	-	-	-	-	-	-----	1300152	
						1	-	-	-	1005158	----- LD,LHD,LU,SD,SHD,SHU,SU	
							1	-	-	1031668	----- LCD,LCHD,LCHU,SCD,SCHD,SCHU	
								1	-	-----	1200478 LC,SC,SHC	
									1	-----	1201788 LCHC,SCHC	
									1	-----	1300867 LC,LD,LHD,LU,SC,SD,SHC,SHD,SHU,SU	
									1	-----	1302243 LCD,LCHC,LCHD,LCHU,SCD,SCHC,SCHD,SCHU	
40100-ZW6-030		-	1	-	-	-	-	-	1300153		
					1	-	-	-	1			
								1	-	1300868	----- LC,LD,LHD,LU,SC,SD,SHC,SHD,SHU,SU	
								1	-	1302244	----- LCD,LCHC,LCHD,LCHU,SCD,SCHC,SCHD,SCHU	
7	58131-ZV0-000	PIN, SHEAR	2	2	2	2	2	2	2			

3

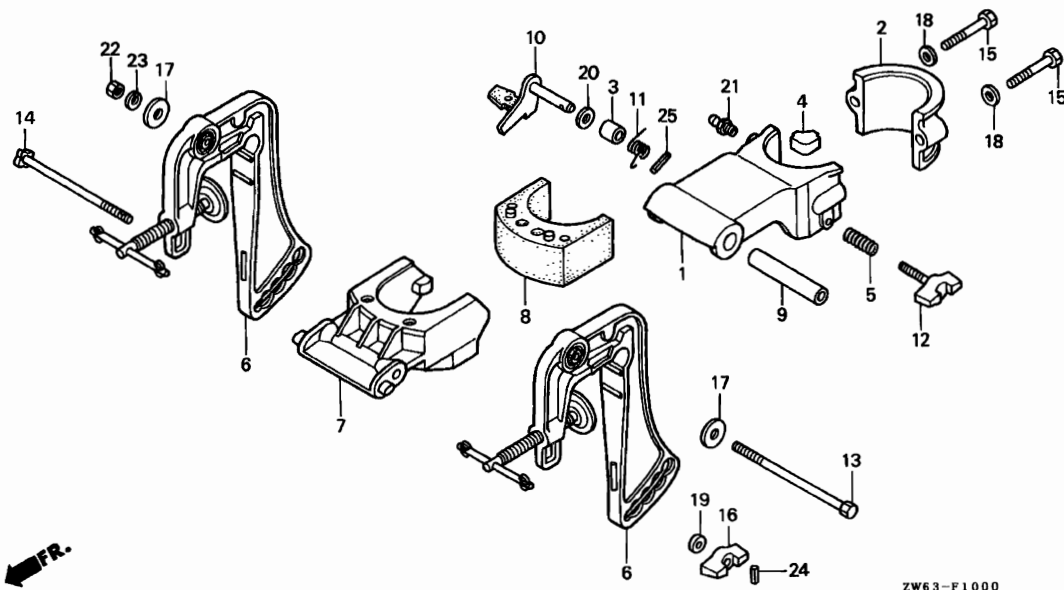
Ref. No.	Part No.	Description	Reqd. QTY								Serial No.	Parts catalogue code
			BF 2B X	BF 2B 4	BF 2.3B 2D X	BF 2D 1	BF 2D 2	BF 2D 3	BF 2D 4			
8	63101-ZW6-010ZA	COVER, ENGINE *NH282MU* OYSTER SILVER METALLIC-U	-	-	-	-	1	-	-	-	-----	----- LC,SC 1201031 SHC 1202245 LCHC,SCHC
	63101-ZW6-020ZA	*NH282MU* OYSTER SILVER METALLIC-U	1	1	1	1	-	1	1	1	-----	----- SHC 1202246 ----- LCHC,SCHC
9	63103-ZV0-000	BELT, ENGINE COVER	1	1	1	1	1	1	1	1		
10	88111-ZV0-000	HOLDER, PARTS	1	1	1	1	1	1	1	1		
11	90019-ZV1-000	BOLT, FLANGE, 5X10	1	-	-	1	1	-	-	-	-----	1300216 1301083 LC,LD,LHD,LU,SC,SD,SHC,SHD,SHU,SU 1304124 LCD,LCHC,LCHD,LCHU,SCD,SCHC,SCHD,SCHU
	90019-ZW4-000	-	1	-	-	-	-	-	-	-----	1300217 1301084 ----- LC,LD,LHD,LU,SC,SD,SHC,SHD,SHU,SU 1304125 ----- LCD,LCHC,LCHD,LCHU,SCD,SCHC,SCHD,SCHU
12	90302-921-000	NUT, HEX., 16MM	1	1	1	1	1	1	1	1		
13	90757-ZV0-000	PIN, SPLIT, 3MM	2	2	2	2	2	2	2	2		
14	91551-ZW6-000	COLLAR, 6X4	3	3	3	3	3	3	3	3		
15	95801-06060-02	BOLT, FLANGE, 6X60	4	-	-	-	-	-	-	-	-----	1001307 1003713 LD,LHD,LU,SD,SHD,SHU,SU 1019361 LCD,LCHD,LCHU,SCD,SCHD,SCHU
	90103-ZW6-000	4	-	-	-	-	-	-	-	-----	1001308 1003714 ----- LD,LHD,LU,SD,SHD,SHU,SU 1019362 ----- LCD,LCHD,LCHU,SCD,SCHD,SCHU
16	91551-ZW6-000	COLLAR, 6X4	1	-	-	-	-	-	-	-	-----	1001467 1003977 LD,LHD,LU,SD,SHD,SHU,SU 1020445 LCD,LCHD,LCHU,SCD,SCHD,SCHU
	91552-ZW6-000	COLLAR, ENGINE UNDER CASE ...	1	-	-	-	-	-	-	-	-----	1001468 1003978 ----- LD,LHD,LU,SD,SHD,SHU,SU 1020446 ----- LCD,LCHD,LCHU,SCD,SCHD,SCHU



F-10

STERN BRACKET

F10

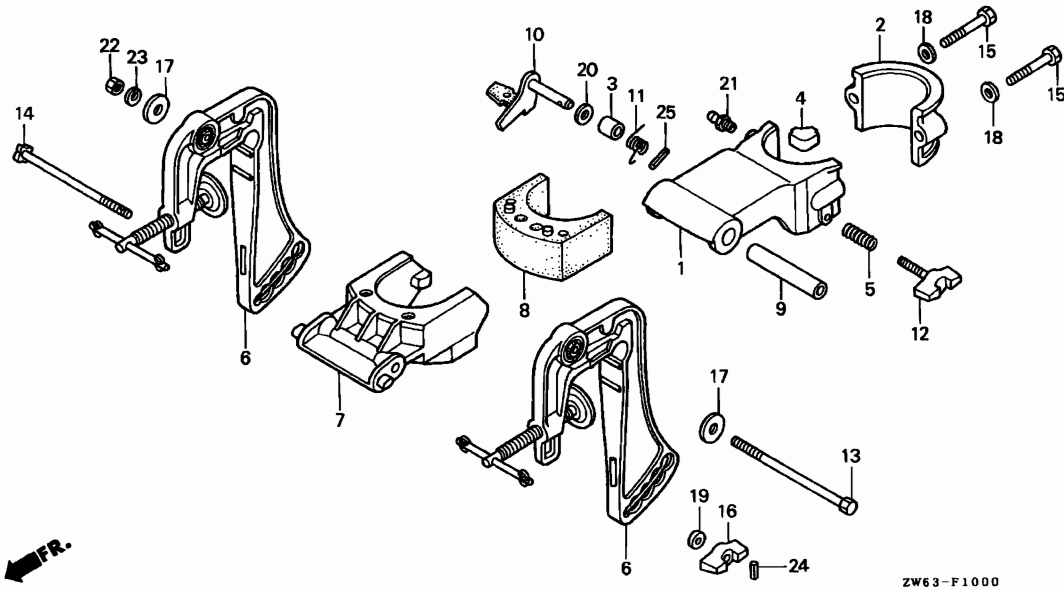


Service item	F.R.T.
ARM COMP., TILT LOCK	0.1
.CAP, SWIVEL CASE	
.SPRING, TILT LOCK	
BRACKET COMP., STERN	0.2
.CASE, SWIVEL	
.RECEIVER, THRUST	
.RUBBER COMP., THRUST	

ZW63-F1000

3

Ref. No.	Part No.	Description	Reqd. QTY								Serial No.	Parts catalogue code
			BF 2B	BF 2B	BF 2.3B	BF 2D	BF 2D	BF 2D	BF 2D	BF 2D		
1	50201-ZW6-000ZA	CASE, SWIVEL *NH246*.....LOOSEY GRAY	1	1	1	1	1	1	1	1		
2	50203-ZW6-000ZA	CAP, SWIVEL CASE *NH246*.....LOOSEY GRAY	1	1	1	1	1	1	1	1		
3	50204-ZV0-000	COLLAR, SWIVEL CASE	1	1	1	1	1	1	1	1		
4	50212-ZV0-010	BLOCK, FRICTION	1	1	1	1	1	1	1	1		
5	50233-ZV0-000	SPRING, FRICTION ADJUSTING ..	1	1	1	1	1	1	1	1		
6	50300-ZW6-000ZA	BRACKET COMP., STERN *NH246*.....LOOSEY GRAY	2	2	2	2	2	2	2	2		
7	50302-ZW6-000	RECEIVER, THRUST	1	1	1	1	1	1	1	1		
8	50303-ZV0-000	RUBBER COMP., THRUST	1	1	1	1	1	1	1	1		
9	50337-ZV0-000	COLLAR, DISTANCE	1	1	1	1	1	1	1	1		
10	50511-ZV0-010	ARM COMP., TILT LOCK	1	1	1	1	1	1	1	1		
11	50516-ZV0-000	SPRING, TILT LOCK	1	1	1	1	1	1	1	1		
12	90106-ZV0-000	BOLT, SWIVEL CASE	1	1	1	1	1	1	1	1		
13	90107-ZV0-000	BOLT, HEX., 8X110	1	1	1	1	1	1	1	1		
14	90108-ZV0-000	BOLT, DIAMOND, 6X110	1	1	1	1	1	1	1	1		
15	90116-881-000	BOLT, HEX., 8X40	2	2	2	2	2	2	2	2		
16	90301-ZV0-000	NUT, WING	1	1	1	1	1	1	1	1		
17	90501-ZV0-000	WASHER, PLAIN, 8MM	2	2	2	2	2	2	2	2		
18	90507-ZV4-000	WASHER, PLAIN, 8MM	2	2	2	2	2	2	2	2		
19	90512-ZV0-000	WASHER, PLAIN, 6MM	1	1	1	1	1	1	1	1		
20	90518-921-000	WASHER, PLAIN, 8MM	1	1	1	1	1	1	1	1		



ZW63-F1000

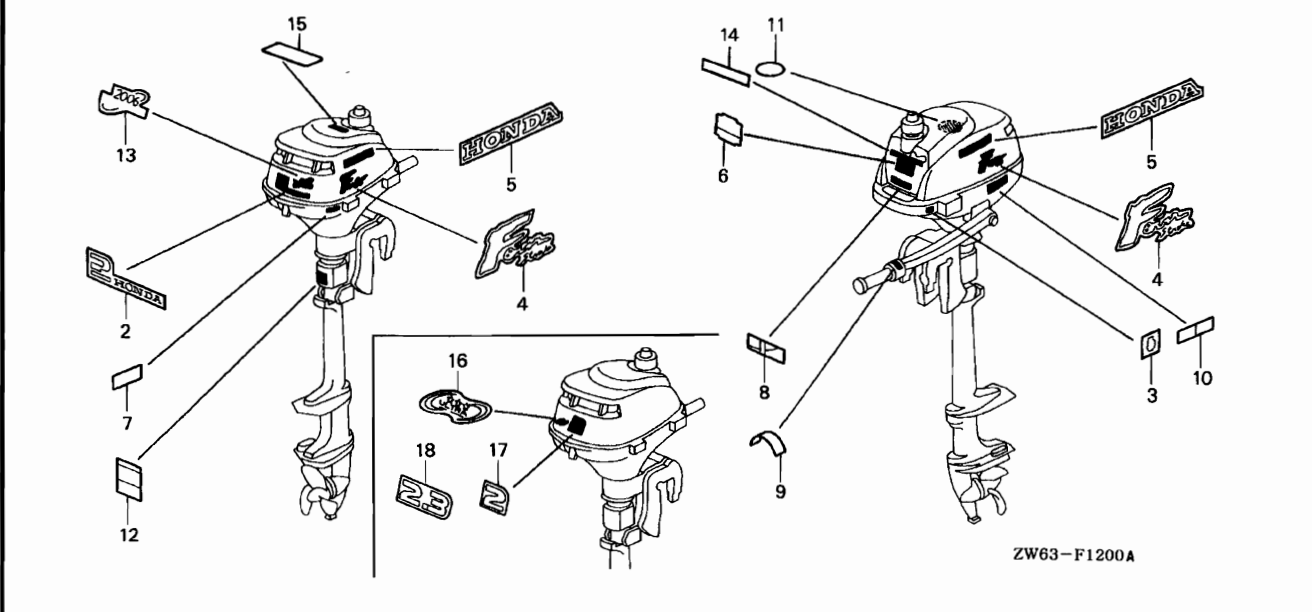
Ref. No.	Part No.	Description	Reqd. QTY								Serial No.	Parts catalogue code
			BF 2B X	BF 2B 2	BF 2.3B 4	BF 2D X	BF 2D 1	BF 2D 2	BF 2D 3	BF 2D 4		
21	90901-ZV4-000	NIPPLE, GREASE	1	-	-	1	1	-	-	-	-	LC,LCHC,SC,SCHC,SHC
	90951-ZV7-010	-	1	1	-	-	-	1	1	-	LCD,LCHD,LCHU,LD,LHD,LU,SCD,SCHD,SCHU,SD,SHD,SHU,SU
22	94001-08490-0S	NUT, HEX., 8MM	1	1	1	1	1	1	1	1	-	
23	94111-08400	WASHER, SPRING, 8MM	1	-	-	1	1	-	-	-	-	
24	94305-25083	PIN, SPRING, 2.5X8	1	-	-	-	-	-	-	-	-	1001307
	90751-ZW6-000	-	-	-	1	-	-	-	-	-	1003693 LD,LHD,LU,SD,SHD,SHU,SU
			-	1	1	-	-	-	-	-	-	1019361 LCD,LCHD,LCHU,SCD,SCHD,SCHU
			-	-	-	1	1	1	1	1	-	1003694 LD,LHD,LU,SD,SHD,SHU,SU
			-	-	-	1	-	-	-	-	-	1019362 LCD,LCHD,LCHU,SCD,SCHD,SCHU
25	94305-25203	PIN, SPRING, 2.5X20	1	-	-	-	-	-	-	-	-	1001307
	90752-ZW6-000	-	-	-	1	-	-	-	-	-	1003693 LD,LHD,LU,SD,SHD,SHU,SU
			1	-	-	-	-	-	-	-	-	1019361 LCD,LCHD,LCHU,SCD,SCHD,SCHU
			-	1	1	-	1	1	1	1	-	1003694 LD,LHD,LU,SD,SHD,SHU,SU
			-	-	-	1	-	-	-	-	-	1019362 LCD,LCHD,LCHU,SCD,SCHD,SCHU



F-12

LABEL

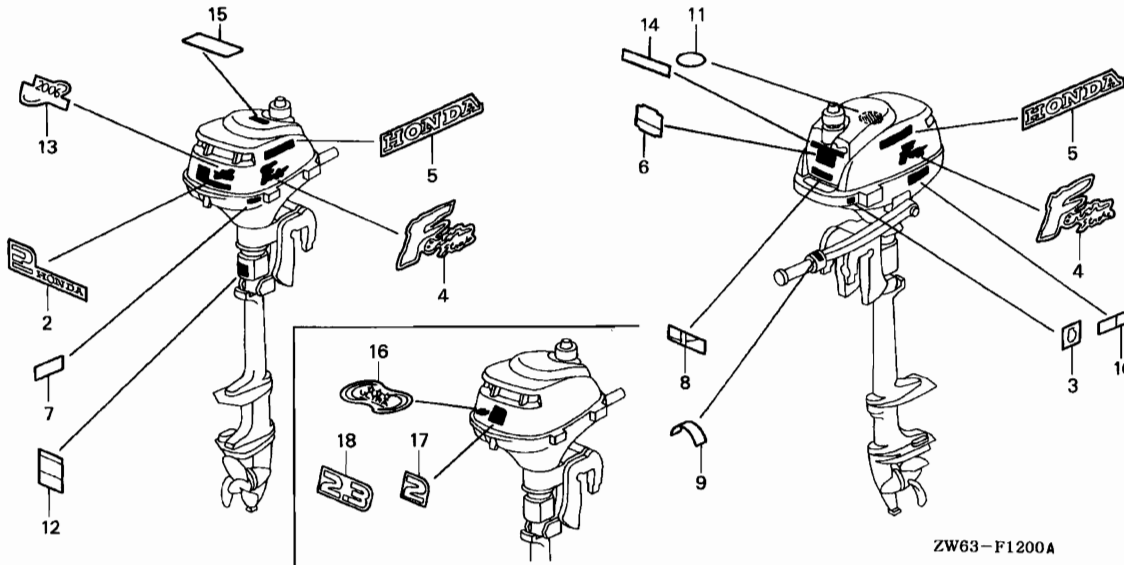
F12



Service item F.R.T.
 NOT INFORMATION

3

Ref. No.	Part No.	Description	Reqd. QTY								Serial No.	Parts catalogue code
			BF 2B	BF 2B	BF 2.3B	BF 2D	BF 2D	BF 2D	BF 2D	BF 2D		
2	87121-ZW6-680	MARK, RR.	1	-	-	-	-	-	-	-		
	87121-ZW6-000	-	-	-	1	1	-	-	-		
3	87124-ZW6-000	MARK, EMERGENCY SWITCH INDICATION	1	1	1	1	1	1	1	1		
4	87131-ZW6-680	MARK, SIDE	2	-	-	-	-	-	-	-		
	87131-ZW6-B00	-	2	2	-	-	2	2	2		
	87131-ZW6-000	-	-	-	2	2	-	-	-		
5	87132-ZW6-680	MARK, SIDE STRIPE	2	-	-	-	-	-	-	-		
	87132-ZW6-B00	MARK, SIDE STRIPE (HONDA) ...	-	2	2	-	-	2	2	2		
	87132-ZW6-000	-	-	-	2	2	-	-	-		
6	87516-ZW6-620	MARK, OPERATOR CAUTION	1	1	1	1	1	1	1	1		
7	87521-ZV0-601	MARK, FUEL COCK (E,F)	1	1	1	1	1	1	1	1		
8	87532-ZW6-000	MARK, THROTTLE (LEVER TYPE) .	1	1	1	1	1	1	1	1	-----	LC,LCD,LCG,LD,LU,SC,SCD,SCG,SD,SU
9	87533-ZW6-700	MARK, THROTTLE (GRIP TYPE) ..	1	1	1	1	1	1	1	1	-----	LCHC,LCHD,LCHG,LCHU,LHD,SCHC,SCHD,SCHG,SCHU SHC,SHD,SHU
10	87535-ZV0-850	CAUTION, STORING	-	-	-	1	1	-	1	-	-----	LC,LCHC,LCHU,LU,SC,SCHC,SCHU,SHC,SHU,SU
		-	-	-	-	1	-	1	-		
11	87537-ZW6-000	LABEL, RECOIL CAUTION	-	-	-	1	1	-	1	-	-----	LC,LCHC,LCHU,LU,SC,SCHC,SCHU,SHC,SHU,SU
		-	-	-	-	1	-	1	-		
12	87539-ZW6-620	MARK, EX. CAUTION	1	1	1	1	1	1	1	1		
13	87634-ZW4-D20	MARK, ENVIRONMENT (EPA 2006)	-	-	-	1	1	-	-	-		
	87634-ZW4-H10	MARK, ENVIRONMENT (2006 EPA STANDARD)	-	-	-	-	-	1	1	-		
14	87572-881-C40	MARK, FUEL CAUTION	1	1	1	-	-	-	-	-		
15	87135-ZW5-000	MARK (E-SPEC)	-	1	1	-	-	1	1	1		



ZW63-F1200A

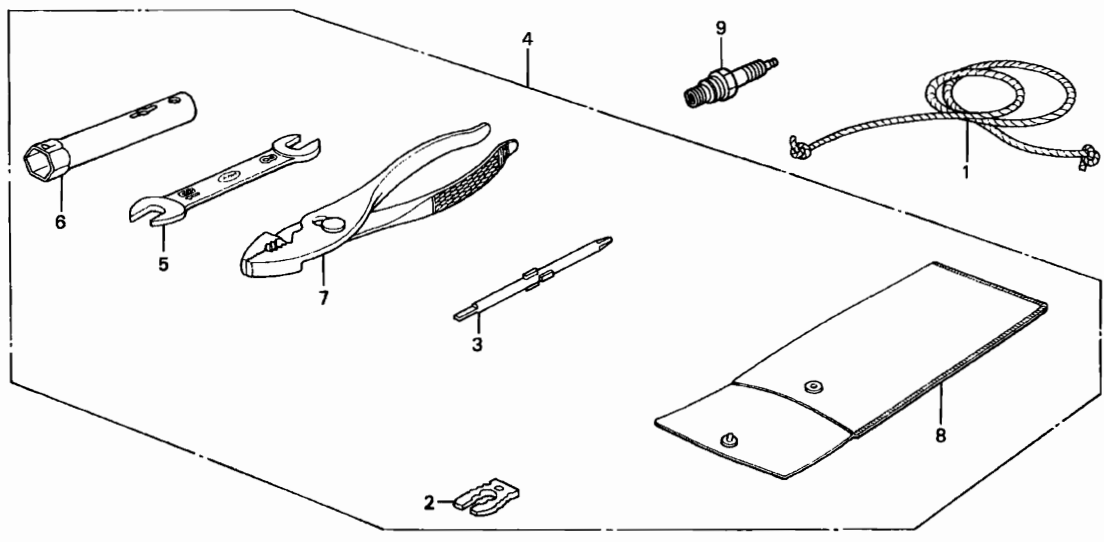
Ref. No.	Part No.	Description	Reqd. QTY								Serial No.	Parts catalogue code
			BF 2B	BF 2B	BF 2.3B	BF 2D	BF 2D	BF 2D	BF 2D	BF 2D		
16	87634-ZW4-H11	MARK, ENVIRONMENT (ULTRA LOW EMISSION)	-	-	-	-	-	-	-	-	1	
17	87121-ZW6-B00	MARK, RR.	-	1	-	-	-	1	1	1		
18	87121-ZW6-G80	MARK, RR. (2.3)	-	-	1	-	-	-	-	-		



F-13

TOOL

F14

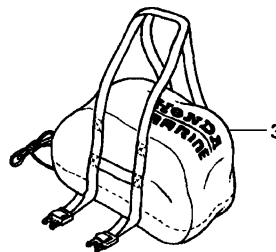
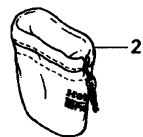


ZW63-F1300

Service item F.R.T.
NOT INFORMATION

3

Ref. No.	Part No.	Description	Reqd. QTY								Serial No.	Parts catalogue code
			BF 2B X	BF 2B 2	BF 2.3B 4	BF 2D X	BF 2D 1	BF 2D 2	BF 2D 3	BF 2D 4		
1	28462-ZV0-000	ROPE, STARTER	1	1	1	1	1	1	1	1		
2	36187-ZV4-651	CLIP, EMERGENCY LOCK	1	1	1	1	1	1	1	1		
3	83513-044-000	DRIVER	1	1	1	1	1	1	1	1		
4	89000-ZW6-000	TOOL KIT	1	1	1	1	1	1	1	1		
5	89203-VF9-003	SPANNER, 8X10	1	1	1	1	1	1	1	1		
6	89216-130-690	WRENCH, SPARK PLUG	1	1	1	1	1	1	1	1		
7	99002-13500	PLIERS, 135	1	1	1	1	1	1	1	1		
8	99008-01600	BAG, TOOL, 160MM	1	1	1	1	1	1	1	1		
9	98056-5475U	PLUG, SPARK (1UF14-UB)	(1)	(1)	(1)	(1)	(1)	(1)	(1)	(1)		



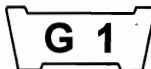
ZW63-Y0100A

Service item F.R.T.
NOT INFORMATION

Ref. No.	Part No.	Description	Reqd. QTY								Serial No.	Parts catalogue code
			BF 2B X	BF 2B 2	BF 2.3B 4	BF 2D X	BF 2D 1	BF 2D 2	BF 2D 3	BF 2D 4		
1	06882-ZW6-U00	COVER KIT, ENGINE (BF2)	(1)	-	-	(1)	(1)	-	-	-		
2	06883-ZW6-U00	COVER KIT, PROPELLER	(1)	-	-	(1)	(1)	-	-	-		
3	06893-ZW6-U00	BAG KIT, ENGINE CARRIER	(1)	-	-	(1)	(1)	-	-	-		



PART NO. INDEX



Part Number	Address	Page	Ref.	Part Number	Address	Page	Ref.	Part Number	Address	Page	Ref.	Part Number	Address	Page	Ref.	Part Number	Address	Page	Ref.
06000				15661-ZV0-003	D1	18	10	16954-ZE1-812	D14	31	18	22100-ZW6-701	D10	27	2	41000			
06882-ZW6-U00	F15	53	1	15721-ZW6-000	E1	34	1	16954-ZW6-003	D14	31	18	22100-ZW6-702	D10	27	2	41100-ZW6-000ZA	F6	44	2
06883-ZW6-U00	F15	53	2	15723-ZW6-000	D3	20	5	16956-ZE1-811	D14	31	19	22214-ZW6-700	D10	27	3	41100-ZW6-010ZA	F6	44	2
06893-ZW6-U00	F15	53	3					16957-ZE1-812	D14	31	20	22252-ZW6-701	D11	28	14	41106-ZV4-650	F4	42	5
				16000				17000				22253-ZW6-700	D10	27	4		F6	44	3
11000				16010-ZV0-025	D12	29	1	17201-ZW6-000	E1	34	2	22254-ZW6-700	D10	27	5	41112-ZW6-000	F6	44	4
11300-ZW6-000	D3	20	1	16010-ZW6-611	D12	29	1	17201-ZW6-010	E1	34	2	22255-ZN4-000	D10	27	6	41112-ZW6-010	F6	44	4
11316-ZW6-000	D3	20	4	16011-ZE0-005	D12	29	2	17202-ZV0-000	E1	34	3	22257-ZW6-000	D10	27	7	41112-ZW6-610	F6	44	4
11340-ZW6-000	D4	21	1	16013-ZG0-811	D12	29	3	17202-ZW6-300	E1	34	3	22260-ZW6-000	D10	27	8	41112-ZW6-611	F6	44	4
11340-ZW6-010	D4	21	1	16015-ZV0-A00	D12	29	4	17203-ZV0-000	E1	34	4	22260-ZW6-020	D10	27	8	41131-ZW6-000	F6	44	5
11340-ZW6-020	D4	21	1	16015-ZW6-003	D12	29	4	17510-ZW6-681	E3	36	2	22261-ZW6-000	D11	28	9	41135-ZV0-000	F7	45	6
11340-ZW6-030	D4	21	1	16015-ZW6-611	D16	33	27	17511-ZW6-010	E3	36	2	22261-ZW6-020	D11	28	9	41160-ZW6-000	F7	45	7
				16016-ZV0-A01	D12	29	5	17514-ZV0-000	F8	46	1					41200-ZW6-000ZA	F7	45	8
				16016-ZV0-E21	D15	32	26	17515-ZV0-000	E3	36	3	28000				41281-ZV0-850	F7	45	9
				16016-ZW6-003	D13	30	5	17620-ZV0-010	E3	36	4	28400-ZW6-003	D8	25	1	50000			
				16016-ZW6-611	D13	30	5	17620-ZW6-020	E3	36	4	28451-ZW6-003	E5	38	1	50201-ZW6-000ZA	F10	48	1
12100-ZW6-000	D1	18	1	16016-ZW6-621	D15	32	26	17621-ZV0-020	E3	36	5	28461-ZA8-902	D8	25	2	50203-ZW6-000ZA	F10	48	2
12100-ZW6-010	D1	18	1	16016-ZW6-711	D15	32	26	17622-ZV0-000	E3	36	6	28462-ZV0-000	F14	52	1	50204-ZV0-000	F10	48	3
12209-ZM7-003	D7	24	1	16024-ZB9-005	D16	33	28	17623-ZV0-000	E3	36	7	28462-ZW6-003	D8	25	4	50211-ZV0-000	F4	42	6
12311-ZW6-000ZA	D1	18	2	16028-ZV0-A00	D13	30	6	17624-ZV0-000	E3	36	8					50212-ZV0-010	F10	48	4
12367-ZE6-010	D1	18	3	16028-ZW6-003	D13	30	6	17625-ZV0-000	E3	36	9	30000				50233-ZV0-000	F10	48	5
				16028-ZW6-611	D16	33	29	17626-ZV0-010	E3	36	10	30500-ZW6-004	E5	38	2	50300-ZW6-000ZA	F10	48	6
				16029-ZW6-003	D13	30	7	17626-ZW6-000	E3	36	10					50302-ZW6-000	F10	48	7
13000				16029-ZW6-013	D13	30	7	17701-ZW6-000	E3	36	12	31000				50303-ZV0-000	F10	48	8
13010-ZW6-000	D6	23	1	16044-ZV0-A01	D13	30	8	17910-ZW6-702	F1	39	2	31110-ZW6-004	E5	38	3	50337-ZV0-000	F10	48	9
13101-ZW6-000	D6	23	2	16082-ZV0-A00	D13	30	9	17920-ZW6-000	F1	39	3					50511-ZV0-010	F10	48	10
13101-ZW6-010	D6	23	2	16082-ZW6-003	D14	31	21	17921-ZV1-010	F1	39	4	32000				50516-ZV0-000	F10	48	11
13111-122-000	D6	23	3	16100-ZW6-003	D14	31	10	17921-ZV1-020	F1	39	4					53000			
13115-147-000	D6	23	4	16100-ZW6-013	D14	31	10	17930-ZW6-700	F1	39	5	32195-ZW6-000	E5	38	4	53101-ZW6-000ZA	F1	39	9
13200-ZN4-000	D6	23	5	16100-ZW6-023	D14	31	10	17931-ZW6-000	F1	39	6					53101-ZW6-700ZA	F1	39	10
13310-ZN4-000	D5	22	1	16100-ZW6-033	D14	31	10	17932-ZV0-000	F1	39	7	35180-ZW6-003	F8	46	4	53104-ZW6-700	F2	40	11
13331-ZM7-000	D5	22	2	16100-ZW6-043	D14	31	10	17932-ZW6-700	F1	39	8					53106-ZW6-700	F2	40	12
				16100-ZW6-681	D13	30	10	17936-921-000	F8	46	2	36000				53107-ZV0-000	F2	40	13
				16100-ZW6-682	D13	30	10	17951-ZG1-000	F8	46	3					53108-ZV0-000	F2	40	14
				16100-ZW6-683	D13	30	10					36182-ZV4-650	F8	46	5	53109-ZV0-000	F2	40	15
14000				16100-ZW6-684	D13	30	10	18000				36187-ZV4-651	F14	52	2	53140-GW0-000	F2	40	16
14111-ZM7-000	D7	24	2	16100-ZW6-686	D14	31	10	18330-ZW6-010	E2	35	1					53165-GW0-000	F2	40	17
14126-Z0G-003	D7	24	3	16100-ZW6-712	D14	31	10	18330-ZW6-681	E2	35	4	40000				53165-ZV0-000	F2	40	18
14410-ZM7-000	D7	24	4	16100-ZW6-713	D14	31	10	18330-ZW6-682	E2	35	4					53167-ZW6-700	F2	40	19
14431-ZM7-000	D7	24	5	16100-ZW6-714	D14	31	10	18458-881-C40	E2	35	5	40100-ZW6-000	F8	46	6	53167-ZW6-701	F2	40	19
14435-ZM7-003	D7	24	6	16100-ZW6-715	D14	31	10	18515-ZW6-000	E2	35	2	40100-ZW6-010	F8	46	6	53168-GAH-700	F2	40	20
14451-ZM7-000	D7	24	7	16100-ZW6-716	D14	31	10					40100-ZW6-020	F8	46	6				
14711-ZW6-000	D7	24	8	16100-ZW6-717	D14	31	10	19251-ZW6-610	F5	43	13	40100-ZW6-030	F8	46	6	58130-ZV0-8412B	F7	45	10
14721-ZW6-000	D7	24	9	16166-ZW6-003	D14	31	11	19610-ZW6-000	D9	26	2	40201-ZW6-010ZA	F4	42	1	58131-ZV0-000	F7	45	11
14721-ZW6-000	D7	24	9	16166-ZW6-681	D14	31	11	19610-ZW6-680	D9	26	2	40202-ZW6-610ZA	F4	42	2		F8	46	7
14731-ZM7-003	D7	24	10	16166-ZW6-711	D14	31	11	19615-ZV0-000	D9	26	3	40205-ZW6-610ZA	F6	44	1				
14731-ZM7-013	D7	24	10	16202-ZW6-000	E1	34	6	19631-ZW6-010	D1	18	11	40210-ZW6-000	F4	42	3	63000			
14751-ZM7-000	D7	24	11	16211-ZN4-000	D14	31	12					40210-ZW6-611	F4	42	3	63101-ZW6-010ZA	F9	47	8
14754-ZM7-000	D7	24	12	16212-ZM7-000	D14	31	13	19000				40218-ZW6-000	F4	42	4	63101-ZW6-020ZA	F9	47	8
14771-ZM3-010	D7	24	13	16221-ZG0-801	D14	31	14	22000-ZW6-701	D10	27	1					63103-ZV0-000	F9	47	9
				16225-ZW6-000	D14	31	15	22100-ZW6-700	D10	27	2								
15000				16512-ZM7-000	D4	21	2												
15171-ZN4-000	D1	18	4	16576-ZV0-000	F1	39	1												
15361-ZN4-000	D7	24	14	16576-ZV0-010	D9	26	1												
15571-ZM7-003	D1	18	5		F1	39	1												
15572-ZM7-000	D1	18	6	16576-ZW6-010	D9	26	1												
15600-ZG4-003	D1	18	7		F1	39	1												
15622-ZW6-000	D1	18	8	16674-ZW6-000	D14	31	16												
15625-ZE1-003	D1	18	9	16952-ZE6-000	E3	36	1												
				16953-ZW6-003	D14	31	17												

4

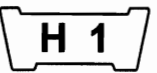
PART NO. INDEX

G 2

Part Number	Address	Page	Ref.	Part Number	Address	Page	Ref.	Part Number	Address	Page	Ref.	Part Number	Address	Page	Ref.
77000				90002-ZW6-000	D1	18	12	90507-ZV4-000	F10	48	18	94001-06490-0S	F3	41	25
77235-GC2-000	F2	40	21	90002-ZW6-010	D1	18	12	90508-ZV0-000	F3	41	28	94001-08490-0S	F11	49	22
80000				90003-ZW6-000	D1	18	13	90511-ZV4-000	F3	41	29	94021-06020-0S	E3	36	18
80105-MG9-000	E3	36	14		E2	35	3	90512-ZV0-000	F10	48	19	94101-04200	E3	36	19
82000				90003-ZW6-010	D1	18	13	90518-921-000	F10	48	20	94111-08400	F11	49	23
82871-671-000	D9	26	7		E2	35	3	90531-ZV0-000	F7	45	18	94251-04000	E4	37	20
83000				90004-ZC3-000	E5	38	5	90532-ZV0-000	F7	45	18	94301-06100	D4	21	7
83513-044-000	F14	52	3	90004-ZW4-000	E5	38	5	90533-ZV0-000	F7	45	18	94301-08100	F5	43	10
87000				90006-ZM7-000	D3	20	2	90534-ZV0-000	F7	45	18	94301-08140	F5	43	11
87121-ZW6-000	F12	50	2		D4	21	3	90535-ZV0-000	F7	45	18		F7	45	19
87121-ZW6-680	F12	50	2	90008-ZM7-000	D1	18	14	90545-323-700	E3	36	15	94305-25083	F11	49	24
87121-ZW6-800	F13	51	17	90008-ZV0-000	F2	40	22	90602-ZM7-000	D4	21	5	94305-25203	F11	49	25
87121-ZW6-G80	F13	51	18	90019-ZV1-000	D1	18	15	90602-ZV0-000	E3	36	16	94520-42000	D11	28	12
87124-ZW6-000	F12	50	3		D3	20	6	90604-ZV0-000	E3	36	17				
87131-ZW6-000	F12	50	4	90019-ZV1-010	F9	47	11	90701-ZW6-000	E4	37	20	95000			
87131-ZW6-680	F12	50	4		D1	18	15	90702-P6R-008	D7	24	3	95003-09010-31	D15	32	23
87131-ZW6-B00	F12	50	4	90019-ZW4-000	F9	47	11	90751-ZW6-000	F11	49	24	95701-06012-02	F3	41	34
87132-ZW6-000	F12	50	5	90042-ZM7-000	D9	26	5	90752-ZW6-000	F11	49	25	95701-06025-02	F5	43	12
87132-ZW6-680	F12	50	5	90043-ZM7-000	D9	26	6	90755-SB2-000	F7	45	20	95701-08014-08	D11	28	13
87132-ZW6-B00	F12	50	5	90056-ZY3-000	F3	41	34	90757-ZV0-000	F7	45	21	95801-06060-02	F9	47	15
87135-ZW5-000	F12	50	15	90101-ZW6-700	F3	41	23		F9	47	13				
87516-ZW6-620	F12	50	6	90102-ZW6-000	F5	43	12	90901-ZV4-000	F11	49	21	96000			
87521-ZV0-601	F12	50	7	90103-ZW6-000	F9	47	15	90951-ZV7-010	F11	49	21				
87532-ZW6-000	F12	50	8	90105-ZV0-000	F3	41	24					96100-60000-00	F7	45	25
87533-ZW6-700	F12	50	9	90105-ZV4-650	D1	18	16	91000				96220-60150	D2	19	20
87535-ZV0-850	F12	50	10		F7	45	12	91001-ZW6-701	D11	28	10	98000			
87537-ZW6-000	F12	50	11	90106-ZV0-000	F10	48	12	91001-ZW6-702	D11	28	10				
87539-ZW6-620	F12	50	12	90107-ZV0-000	F10	48	13	91151-VB5-800	D7	24	17	98056-54757	D2	19	21
87572-881-C40	F12	50	14	90108-ZV0-000	F10	48	14	91202-HC5-003	D3	20	3	98056-5475U	F14	52	9
87634-ZW4-D20	F12	50	13	90113-ZV0-000	F4	42	7		D4	21	6	98056-54777	D2	19	21
87634-ZW4-H10	F12	50	13	90116-881-000	F10	48	15	91251-ZV0-003	F7	45	22	98056-55757	D2	19	21
87634-ZW4-H11	F13	51	16	90127-ZV4-000	F4	42	8	91253-ZV0-003	F7	45	23	98056-55777	D2	19	21
88000					F7	45	14	91301-ZE9-003	D2	19	18				
88111-ZV0-000	F9	47	10	90174-ZW4-000	D3	20	2	91401-ZW6-003	D15	32	23	99000			
89000					D4	21	3	91551-ZW6-000	F9	47	14				
89000-ZW6-000	F14	52	4	90183-ZW4-000	D14	31	22					99002-13500	F14	52	7
89203-VF9-003	F14	52	5	90206-KM3-000	D7	24	15	91552-ZW6-000	F9	47	16	99008-01600	F14	52	8
89216-130-690	F14	52	6	90301-782-000	F3	41	25					99101-ZG0-0600	D15	32	24
90000				90301-ZV0-000	F10	48	16	92000				99101-ZG0-0620	D15	32	24
90001-ZM7-000	D6	23	7	90302-921-000	F9	47	12	92101-05016-4J	F5	43	14	99101-ZG0-0650	D15	32	24
90001-ZW6-000	E1	34	5	90302-ZW4-000	F3	41	33	92101-06012-4J	F7	45	24	99204-ZE0-0350	D15	32	25
90001-ZW6-010	E1	34	5	90303-GC2-630	D8	25	3	92101-06014-4J	F3	41	30				
90002-ZV0-000	D9	26	4	90305-ZW4-000	E5	38	6								
90002-ZV0-010	D9	26	4	90373-SP0-000	E5	38	6	93000							
				90401-ZW6-000	D7	24	16	93404-05016-08	D7	24	18				
				90402-ZW6-000	E4	37	19	93500-03005-0A	D2	19	19				
				90403-ZW6-000	E3	36	15	93500-03006-1H	D14	31	21				
				90441-035-000	E2	35	6	93500-05020-4J	F3	41	31				
				90441-ZM7-000	D4	21	4	93600-05020-0B	D14	31	22				
				90471-580-000	D2	19	17								
				90481-ZV0-000	F3	41	26	94000							
				90501-ZV0-000	F10	48	17	94001-05020-0S	F3	41	32				
				90504-921-010	F3	41	27	94001-05490-0S	F3	41	32				
					F7	45	15	94001-06020-0S	F3	41	33				
				90506-ZV4-000	F4	42	9								
				90507-921-000	F7	45	16								

4

PART NAME INDEX



Part name	Address	Page	Ref.	Part name	Address	Page	Ref.	Part name	Address	Page	Ref.
[A]				[C]				EXTENSION, OIL LEVEL FINDER... D1 18 8			
ARM COMP., THROTTLE	F1	39	5	CABLE COMP., THROTTLE	F1	39	2	[F]			
ARM COMP., TILT LOCK	F10	48	10	CAMSHAFT	D7	24	2	FILTER, BREATHER	D1	18	3
ARM, VALVE ROCKER	D7	24	5	CAP ASSY., FUEL TANK	E3	36	4	FINDER, OIL LEVEL	D1	18	10
[B]				CAP ASSY., OIL FILLER	D1	18	7	FLOAT SET	D12	29	3
BAG KIT, ENGINE CARRIER	F15	53	3	CAP, SAMPLING PROBE	E2	35	5	FLYWHEEL COMP.	E5	38	3
BAG, TOOL, 160MM	F14	52	8	CAP, SWIVEL CASE	F10	48	2	[G]			
BARREL COMP., CYLINDER	D1	18	1	CARBURETOR ASSY.	D13	30	10	GASKET SET	D12	29	1
BEARING, RADIAL BALL, 6000 ...	F7	45	25	CLIP, EMERGENCY LOCK	F14	52	2	GEAR, PINION	F6	44	5
BEARING, RADIAL BALL, 6004 ...	D11	28	10	CLIP, GOVERNOR HOLDER	D4	21	5	GRIP COMP., THROTTLE	F2	40	16
BELT, ENGINE COVER	F9	47	9	CLIP, PISTON PIN, 10MM	D6	23	4	GRIP, LEVER	F2	40	18
BLOCK, FRICTION	F10	48	4	CLIP, TUBE	E3	36	16	GRIP, R. HANDLE	F2	40	17
BLOCK, THROTTLE FRICTION	F2	40	12	CLUTCH ASSY.	D10	27	1	GROMMET, DRAIN HOLE, 25MM	D9	26	7
BODY, FUEL CAP	E3	36	5	COIL ASSY., IGNITION	E5	38	2	GROMMET, FAN COVER	D9	26	3
BOLT-WASHER, 5X16	D7	24	18	COLLAR, 6X4	F9	47	14	GUIDE, AIR	E1	34	2
BOLT, 4X10	D1	18	14	COLLAR, DISTANCE	E1	34	3	GUIDE, AIR EX.	E2	35	2
BOLT, CLUTCH	D10	27	4	COLLAR, ENGINE UNDER CASE	F9	47	16	[H]			
BOLT, CLUTCH STAY	D10	27	6	COLLAR, HANDLE MOUNTING	F2	40	15	HANDLE, STEERING	F1	39	9
BOLT, CONNECTING ROD	D6	23	7	COLLAR, LIFTER	D7	24	12	HOLDER ASSY., PROPELLER SHAFT	F7	45	8
BOLT, DIAMOND, 6X110	F10	48	14	COLLAR, SEAT CATCH	F2	40	21	HOLDER, CABLE	D9	26	1
BOLT, FLANGE, 5X10	D1	18	15	COLLAR, SWIVEL CASE	F10	48	3	HOLDER, CABLE	F1	39	1
	D3	20	6	CORD COMP., EMERGENCY	F8	46	5	HOLDER, GOVERNOR WEIGHT	D4	21	2
	D9	26	4	CORD, STOP SWITCH	E5	38	4	HOLDER, PARTS	F9	47	10
	F9	47	11	COVER COMP., CRANKCASE SIDE	D4	21	1	HOUSING ASSY., CLUTCH	D10	27	8
BOLT, FLANGE, 5X12	D1	18	12	COVER COMP., FAN	D9	26	2	HOUSING COMP., CLUTCH	D11	28	9
BOLT, FLANGE, 5X16	D1	18	13	COVER KIT, ENGINE	F15	53	1	HOUSING, CLUTCH	D11	28	9
	E2	35	3	COVER KIT, PROPELLER	F15	53	2	HOUSING, UNDER THROTTLE	F2	40	19
BOLT, FLANGE, 5X20	E5	38	5	COVER, ENGINE	F9	47	8	HOUSING, UPPER THROTTLE	F2	40	20
BOLT, FLANGE, 5X23	D3	20	2	COVER, HEAD	D1	18	2	[I]			
	D4	21	3	CRANKSHAFT COMP.	D5	22	1	INNER, FUEL CAP	E3	36	6
BOLT, FLANGE, 5X62	E1	34	5	CUSHION, AIR CLEANER	E3	36	14	INSULATOR, CARBURETOR	D14	31	12
BOLT, FLANGE, 6X12	F3	41	34	[D]				[J]			
BOLT, FLANGE, 6X25	F5	43	12	DOWEL PIN, 6X10	D4	21	7	JET SET, PILOT,	D15	32	25
BOLT, FLANGE, 6X25	F5	43	12	DOWEL PIN, 8X10	F5	43	10	JET, MAIN,	D15	32	24
BOLT, FLANGE, 6X60	F9	47	15	DOWEL PIN, 8X14	F5	43	11	[K]			
BOLT, FLANGE, 8X14	D11	28	13	DRIVER	F7	45	19	KEY, SPECIAL	D5	22	2
BOLT, FLANGE, 8X40	F3	41	24		F14	52	3	KNOB, CHOKE	F8	46	3
BOLT, FLANGE, 8X40	F3	41	24	[E]				KNOB, STARTER	D8	25	2
BOLT, FRICTION	F2	40	11	E-RING, 6MM	F7	45	20	[L]			
BOLT, HEX., 5X16	F5	43	14	[L]				LABEL, RECOIL CAUTION	F12	50	11
BOLT, HEX., 6X12	F7	45	24					LEVER SET, CHOKE	D13	30	8
BOLT, HEX., 6X12	F7	45	24					LEVER, COCK	D14	31	17
BOLT, HEX., 6X14	F3	41	30					LEVER, THROTTLE	F1	39	6
BOLT, HEX., 6X14	F3	41	30								
BOLT, HEX., 6X16	F2	40	22								
	F4	42	8								
	F7	45	14								
BOLT, HEX., 6X24	F3	41	23								
BOLT, HEX., 6X35	F4	42	7								
	F7	45	13								
BOLT, HEX., 8X110	F10	48	13								
BOLT, HEX., 8X40	F10	48	15								
BOLT, OIL CHECK, 8X8	D1	18	16								
	F7	45	12								
BOLT, STUD	D9	26	5								
	F4	42	3								
BOLT, SWIVEL CASE	F10	48	12								
BRACKET COMP., STERN	F10	48	6								
BUSH COMP., VERTICAL SHAFT ...	F4	42	3								



PART NAME INDEX

H 2

Part name	Address	Page	Ref.	Part name	Address	Page	Ref.	Part name	Address	Page	Ref.
LIFTER, VALVE	D7	24	10	PACKING, VALVE	E3	36	8	SCREW, PAN, 5X20	F3	41	31
LINER, SWIVEL CASE	F4	42	6	PIN, LOCK, 4MM	E4	37	20	SEAL, VALVE STEM	D7	24	1
LINK, FUEL CAP	E3	36	11	PIN, OIL PUMP	D7	24	3	SEAL, WATER, 11X21X8	D11	28	11
[M]				PIN, PISTON, 10X33	D6	23	3	SEPARATOR, EXTENSION	F4	42	2
MARK	F12	50	15	PIN, SHEAR	F7	45	11	SHAFT COMP., PROPELLER	F7	45	7
MARK, EMERGENCY SWITCH					F8	46	7	SHAFT, EXTENSION	D10	27	7
INDICATION				PIN, SPLIT, 3MM	F7	45	21	SHAFT, VERTICAL	F6	44	4
MARK, ENVIRONMENT	F12	50	3		F9	47	13	SHROUD	D1	18	11
				PIN, SPRING, 2.5X20	F11	49	25	SLINGER, OIL	D7	24	14
MARK, ENVIRONMENT	F12	50	13	PIN, SPRING, 2.5X8	F11	49	24	SPANNER, 8X10	F14	52	5
				PIPE COMP., EX.	E2	35	1	SPONGE, FUEL CAP BREATHER	E3	36	7
MARK, EX. CAUTION	F12	50	12					SPRING, CLUTCH SHOE	D11	28	14
MARK, FUEL CAUTION	F12	50	14	PIPE, BREATHER	D1	18	4	SPRING, COCK LEVER	D14	31	19
MARK, FUEL COCK	F12	50	7	PISTON	D6	23	2	SPRING, FRICTION ADJUSTING	F10	48	5
MARK, OPERATOR CAUTION	F12	50	6	PIVOT, ROCKER ARM	D7	24	7	SPRING, FUEL CAP	E3	36	12
MARK, RR.	F12	50	2	PLATE, CARBURETOR JOINT	D14	31	15	SPRING, LEVER	F1	39	7
				PLATE, CAVITATION	F6	44	1	SPRING, THROTTLE ARM	F1	39	8
				PLATE, LEVER SETTING	D14	31	18	SPRING, TILT LOCK	F10	48	11
MARK, SIDE	F12	50	4	PLATE, STOPPER	D1	18	6	SPRING, VALVE	D7	24	11
MARK, SIDE STRIPE	F12	50	5	PLATE, TUBE SETTING	D3	20	4	STARTER ASSY., RECOIL	D8	25	1
MARK, THROTTLE	F12	50	8	PLIERS, 135	F14	52	7	STAY, CLUTCH	D10	27	3
				PLUG, SPARK	D2	19	21	STRAINER, FUEL	E3	36	1
					F14	52	9	SWITCH ASSY., EMERGENCY STOP ..	F8	46	4
METAL, ANODE	F4	42	5	PROPELLER COMP., THREE BLADES ..	F7	45	10	[T]			
	F6	44	3	PROTECTOR, EXTENSION	F4	42	4	TANK COMP., FUEL	E3	36	2
[N]				PULLEY, STARTER	E5	38	1	TANK, FUEL	E3	36	2
NIPPLE, GREASE	F11	49	21	[R]				TOOL KIT	F14	52	4
NOZZLE, MAIN	D14	31	11	RECEIVER, THRUST	F10	48	7	TRAP, FLAME	E1	34	4
NUT, CAP, 6MM	E3	36	18	RETAINER, VALVE SPRING	D7	24	13	TUBE COMP., WATER	F5	43	13
NUT, FLANGE CAP, 5MM	D8	25	3	RING SET, PISTON	D6	23	1	TUBE, AIR VENT	D15	32	23
NUT, FLANGE, 10MM	E5	38	6	ROD ASSY., CONNECTING	D6	23	5	TUBE, BREATHER	E1	34	1
NUT, HEX., 16MM	F9	47	12	ROD, CHOKE	D14	31	16	TUBE, CLUTCH HOUSING BREATHER ..	D3	20	5
NUT, HEX., 5MM	F3	41	32	ROD, PUSH	D7	24	4	TUBE, FUEL	E3	36	13
NUT, HEX., 6MM	F3	41	25	ROLLER	D7	24	3	TUBE, VINYL, 4.5X8X100	D15	32	23
								[V]			
NUT, HEX., 8MM	F11	49	22	ROLLER, 6X15	D2	19	20	VALVE COMP., BREATHER	E3	36	10
NUT, TAPPET ADJUSTING	D7	24	15	ROLLER, 6X25	D7	24	17	VALVE SET, FLOAT	D12	29	2
NUT, U, 6MM	F3	41	25	ROPE, RECOIL STARTER	D8	25	4	VALVE, EX.	D7	24	9
NUT, WING	F10	48	16	ROPE, STARTER	F14	52	1	VALVE, IN.	D7	24	8
[O]				RUBBER A, TANK MOUNTING	E3	36	3	VALVE, OIL OUTLET	D1	18	5
OIL SEAL, 17X27X5	D3	20	3	RUBBER COMP., THRUST	F10	48	8	[W]			
	D4	21	6	RUBBER, HANDLE MOUNTING	F2	40	14	WASHER, 12.5X32	F3	41	28
O-RING, 22.5X2.2	D2	19	18	RUBBER, TANK MOUNTING	F8	46	1	WASHER, 4.2X13	D4	21	4
OUTER ASSY., CLUTCH	D10	27	2	[S]				WASHER, 6MM	D7	24	16
[P]				SCREW SET	D12	29	5	WASHER, 6.5X18	E3	36	15
PACKING, 8MM	D2	19	17		D13	30	5	WASHER, CONTROL LEVER	F3	41	26
PACKING, AIR GUIDE	E1	34	6					WASHER, GEAR	F7	45	18
PACKING, CARBURETOR	D14	31	14		D15	32	26	WASHER, NYLON, 8MM	F7	45	17
PACKING, FUEL CAP	E3	36	9	SCREW SET, DRAIN	D16	33	28	WASHER, PINION THRUST	F7	45	6
PACKING, FUEL COCK	D14	31	20	SCREW, FLAT, 5X20	D14	31	22	WASHER, PIVOT	F8	46	2
PACKING, INSULATOR	D14	31	13	SCREW, PAN	D13	30	9	WASHER, PLAIN	D10	27	5
PACKING, OIL FILLER CAP	D1	18	9	SCREW, PAN, 3X5	D2	19	19	WASHER, PLAIN, 4MM	E3	36	19
PACKING, PROPELLER SHAFT				SCREW, PAN, 3X6	D14	31	21		E4	37	19
HOLDER	F7	45	9								




PART NAME INDEX

H 3


Part name	Address	Page	Ref.	Part name	Address	Page	Ref.	Part name	Address	Page	Ref.
WASHER, PLAIN, 6MM	F3	41	27								
	F4	42	9								
	F7	45	15								
			16								
	F10	48	19								
WASHER, PLAIN, 8MM	F10	48	17								
			18								
			20								
WASHER, SEALING, 14MM	E2	35	6								
WASHER, SPRING, 8MM	F11	49	23								
WATER SEAL, 11X21X8	F7	45	22								
			23								
WRENCH, SPARK PLUG	F14	52	6								

5

4




5




6

7



8



1

FOREWORD INDEX

2

ENGINE GROUP

3

FRAME GROUP

4

PART NUMBER INDEX

5

PART NAME INDEX
