

HONDA
MARINE

OUTBOARD MOTOR

BF4AH
BF4.9DH
BF5DH
BF6AH

PARTS CATALOGUE

1

FOREWORD INDEX

1

ENGINE GROUP

2

FRAME GROUP

3

PART NUMBER INDEX

4

PART NAME INDEX

5

Instruction for use of parts catalogue

- **This parts catalogue was prepared based on the latest information available as of August 01, 2016.**
 - See the parts catalogue news for any revision that is made after August 01, 2016.
- **Always specify the part number when ordering a part.**
 - Check the model, type, serial numbers, color, maker, and the size as needed before ordering a part.
 - Note that the illustrations (part drawings) can differ from the actual parts in shape. They are given just to help you to refer to the parts.
- **When modifications or additions to this parts catalogue are made, a revised edition will be issued at an appropriate time, with successively progressing revision numbers on the cover. We recommend obtaining such revisions in order to keep your parts catalogue up-to-date at all times. To check whether a parts catalogue revision has been issued, please contact your Honda distributor.**

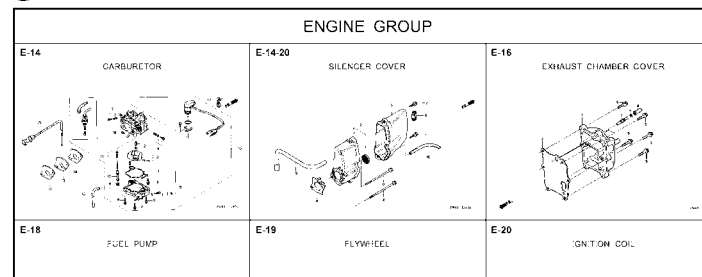
Initial version issue date August 01, 2016
Honda Motor Co., Ltd.

CONTENTS

	Page
● Instruction for use of parts catalogue	1
● How to refer to the part information	2
● Part catalogue structure	3
● When the parts were revised.....	4
● Abbreviations used in the parts catalogue.....	4
● How to check the part block and serial numbers.....	5
● Models, parts catalogue codes and applicable serial numbers.....	6
● Features of each type.....	7
● Fuel hose, general purpose hoses and vinyl hose	8
● FLAT RATE SERVICE TIME	9
● Illustrated index	14
● ENGINE GROUP.....	18
● FRAME GROUP.....	35
● PART NO. INDEX.....	54
● PART NAME INDEX.....	56

How to refer to the part information

A Reference with "Illustrated index"



B Reference with "Part number index"

PART NO. INDEX				
Part Number	Page Ref.	Part Number	Page Ref.	Pi
06000		15212-ZW9-000	49 7	17583
		15220-ZW9-003	49 8	17583
06316-ZW9-000	104 1	15332-ZW9-000	74 2	17611
		15332-ZW9-A30	76 2	17611
11000		15400-PFB-004	46 5	17612
		15422-ZW9-000	49 9	17620
11300-ZW9-000	46 1	15473-881-000	49 10	17620
11300-ZW9-800	46 1	15474-ZW9-000	49 11	17624
11340-ZW9-000	46 2	15611-921-000	45 6	17650
11342-ZW9-000	46 3	15655-ZW9-000	46 6	
11381-ZW9-003	47 1			17660
				17661
12000		16000		
		16010-ZV4-005	55 1	17665
12000-ZW9-000ZA	46 4	16011-ZV4-005	55 2	17670
12155-ZV4-A00	48 1	16013-ZW9-003	55 3	17680
12166-ZW9-000	45 1	16016-ZW9-003	55 4	
12209-GB4-681	51 1	16016-ZW9-721	55 4	17701
12210-ZW9-000ZA	45 2	16023-ZW9-003	55 5	17701
12216-ZE2-300	74 1	16024-ZV4-650	55 6	17701
		16028-ZV4-650	55 7	17702

C Reference with "Part name index"

PART NAME INDEX		
Part name	Page	Ref.
[A]		
ABSORBER, FUEL	80	5
ARMATURE COMP.	62	7
ARM COMP., LINK JOINT	102	18
ARM COMP., SHIFT LINK	102	14
ARM COMP., TILT	97	20
ARM, FUEL PUMP ROCKER	51	4
ARM, REVERSE LOCK	97	18
ARM, SHIFT LINK	92	7
ARM, STOPPER	52	12
ARM, THROTTLE REMOTE	92	6
ARM, VALVE ROCKER	51	3
[B]		
BAG, TOOL, 160MM	101	10
BAND	103	37
BAND B1, WIRE	87	1
BAND, CORD	35	18
BAND, TUBE CLIP, 11MM	81	20
BAND, TUBE CLIP, 12.5MM	81	19

E-2 CYLINDER HEAD

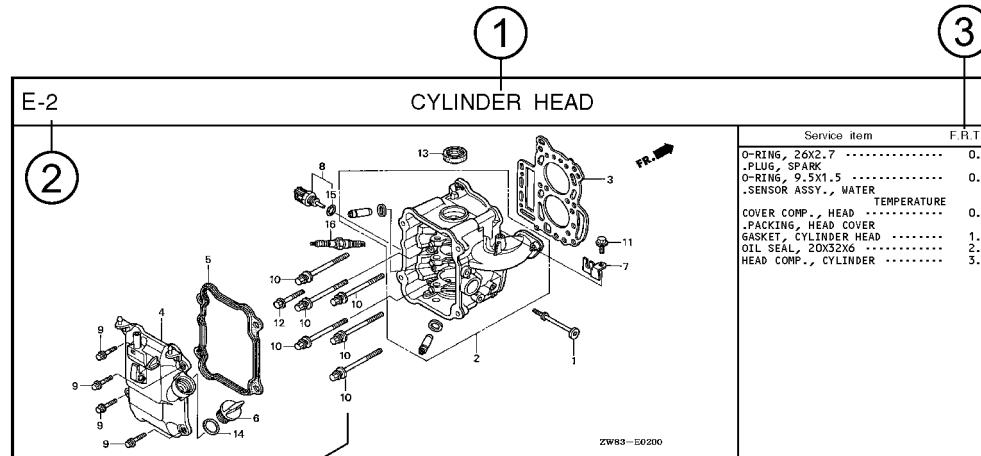
Ref No.

Ref. No.	Part No.	Description	Reqd. QTY						Serial No.	Parts catalogue code
			9901	9901	1001	1001	1001	1001		
1	12166-ZW9-000	STOPPER, ENGINE SIDE	2	2	2	2	2	2		
2	12210-ZW9-000ZA	HEAD COMP., CYLINDER	1	1	1	1	1	1		
3	12251-ZW9-003	GASKET, CYLINDER HEAD	1	1	1	1	1	1		
4	12310-ZW9-000	COVER COMP., HEAD	1	1	1	1	1	1		
5	12312-ZW9-000	PACKING, HEAD COVER	1	1	1	1	1	1		
6	15611-921-000	CAP, OIL	1	1	1	1	1	1		
7	16617-ZW9-000	HOLDER, CABLE	1	1	1	1	1	1	SC,SG	
	16617-ZW9-010	1	1	1	1	1	1	1001800 LHC,LHD	
		1	1	1	1	1	1	1001801 ----- LHC,LHD	
8	35673-ZW5-003	SENSOR ASSY., WATER	1	1	1	1	1	1		
9	90003-ZW9-000	BOLT, FLANGE, 6X22	4	4	4	4	4	4		
10	90007-ZW9-003	BOLT, FLANGE, 8X83	6	6	6	6	6	6		
11	90011-ZW9-000	BOLT, FLANGE, 6X14(CT200) ...	1	1	1	1	1	1		
12	90020-ZW9-000	BOLT, FLANGE, 8X40	2	2	2	2	2	2		
13	91202-KJ9-003	OIL SEAL, 30X32X6	1	1	1	1	1	1		
14	91301-805-000	O-RING, 26X2.7	1	1	1	1	1	1		
15	91307-PK2-005	O-RING, 9.5X1.5(HONDA KIKAKI)	1	1	1	1	1	1		
16	98059-55916	PLUG, SPARK (CR5EH-9)	2	2	2	2	2	2		
	98059-55926	PLUG, SPARK (U16FER9)	2	2	2	2	2	2		

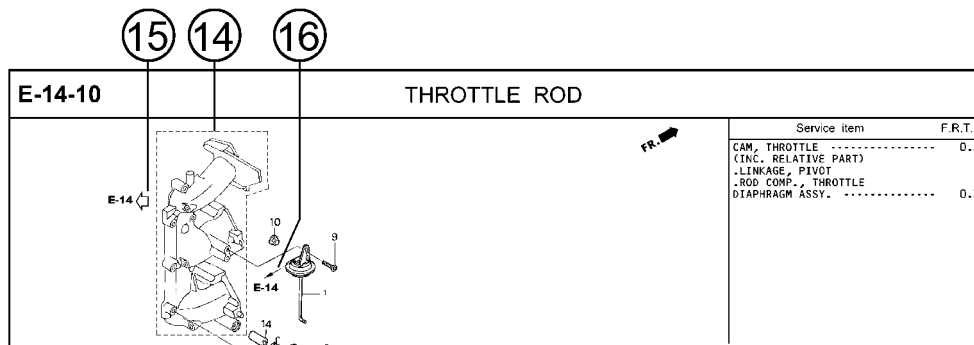
2000.09.20 E

Page No.

Part catalogue structure



Ref. No.	Part No.	Description	Reqd. QTY						Serial No.	Parts catalogue code
			BF 9.9D1	BFF 9.9D1	BF 10D1	BFF 10D1	BF 10B1	BFF 10B1		
1	12166-ZW9-000	STOPPER, ENGINE SIDE	2	2	2	2	2			
2	12210-ZW9-000ZA	HEAD COMP., CYLINDER *NH8*.....DARK GRAY	1	1	1	1	1	1		
3	12251-ZW9-003	GASKET, CYLINDER HEAD	1	1	1	1	1	1		
4	12310-ZW9-000	COVER COMP., HEAD	1	1	1	1	1	1		
5	12312-ZW9-000	PACKING, HEAD COVER	1	1	1	1	1	1		
6	15611-921-000	CAP, OIL (NO GAUGE)	1	1	1	1	1	1		
7	16617-ZW9-000	HOLDER, CABLE	1	1	1	1	1	1	----- SC,SG	
	16617-ZW9-010		1	1	1	1	1	1	----- 1001800 LHC,LHD	



① Block title ② Block number

③ Service item/Flat rate time

④ Reference number

- Title number marked with the parenthesis or parentheses indicates that it continues from the previous page.

⑤ Part number ⑥ Honda color code

⑦ Description

⑧ Assemblies

- Sections framed with broken lines in the exploded view drawings are available as complete assemblies. (Their individual parts can also be obtained.)

⑨ Color description

⑩ Note

- Notes are shown with the parentheses in the part name column.

⑪ Required quantity

- Required QTY shown in the parenthesis or parentheses indicates the optional part.
- Required QTY marked with "N" Indicates the optional part that should be selected as needed.
- Required QTY indicates the number of the part used in the block.

⑫ Serial number

⑬ Type

- When the type column is blank, it indicates that the part is applicable to all types.
- As the type of the actual unit may differ from the "parts catalogue, type" please refer to "Models, types and applicable serial numbers" for confirmation.

⑭

- Parts enclosed within a dotted line are covered in a different block.

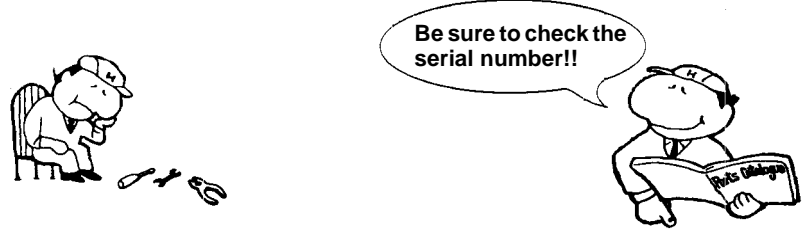
⑮

- A hollow arrow indicates the block No. for the parts enclosed within a dotted line.

⑯

- A solid arrow indicates the block No. the part in question is connected to.

When the parts were revised



Ref. No.	Part No.	Description	Reqd. QTY						Serial No.
			BF 9.9D1	BFP 9.9D1	BF 10D1	BFP 10D1	BF 10B1	BFP 10B1	
1	12166-ZW9-000	STOPPER, ENGINE SIDE	2	2	2	2	2	2	
2	12210-ZW9-000ZA	HEAD COMP., CYLINDER							
		NH8.....DARK GRAY	1	1	1	1	1	1	
3	12251-ZW9-003	GASKET, CYLINDER HEAD	1	1	1	1	1	1	
4	12310-ZW9-000	COVER COMP., HEAD	1	1	1	1	1	1	
5	12312-ZW9-000	PACKING, HEAD COVER	1	1	1	1	1	1	
6	15611-921-000	CAP, OIL (NO GAUGE)	1	1	1	1	1	1	
7	16617-ZW9-000	HOLDER, CABLE (###)	1	1	1	1	1	1	
	16617-ZW9-010		1	1	1	1	1	1	

The number has been used from the initial model without revision.

When shown at the left side, it is applicable to the models of No.1001801 and the subsequent numbers.

When shown at the right side, it is applicable to the models up to No.1001800.

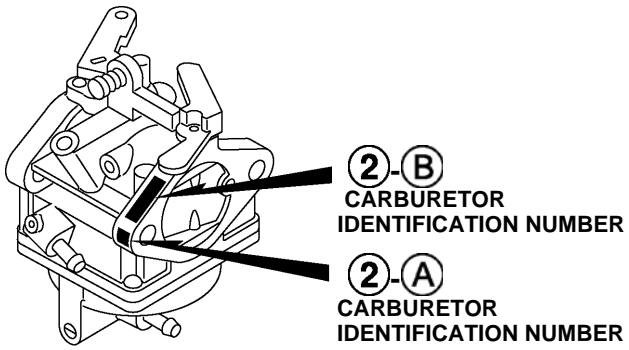
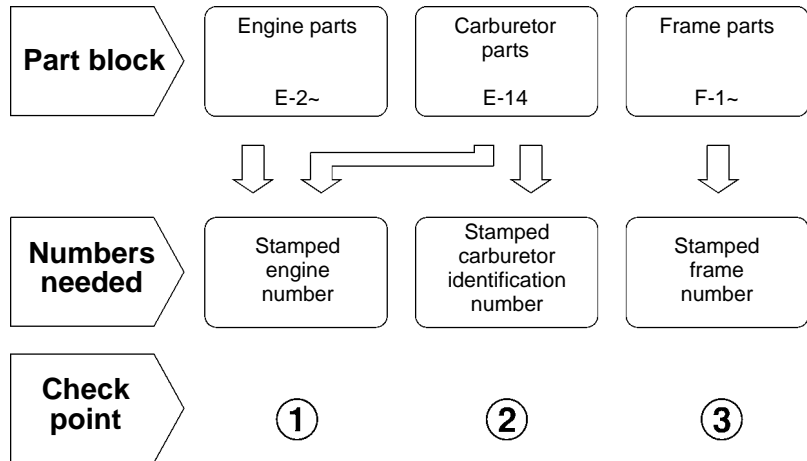
• The parts listed with "###" at the end of the parts name have limited supply period (parts not for sale).

Abbreviations used in the parts catalogue

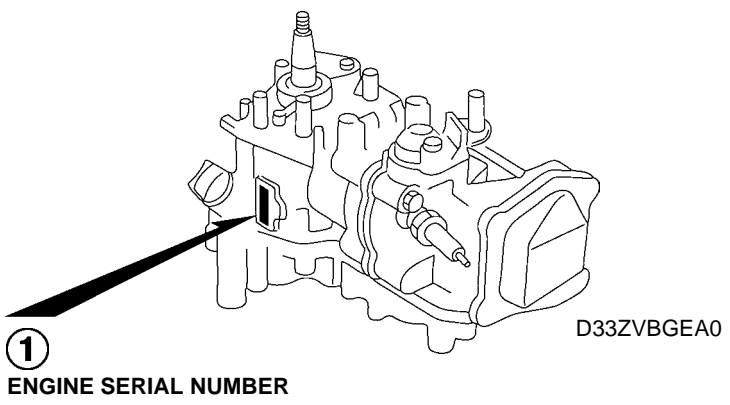
• The following abbreviations are used in the parts name column.

- A Ampere
- A.C. Alternating current
- ASSY. Assembly
- AT. Automatic transmission
- C.D.I. Capacitive discharge ignition
- COMP. ... Complete
- D.C. Direct current
- EX. Exhaust
- G.F.C.I ... Ground fault circuit interruptor
- HEX. Hexagonal
- H.S.T. Hydrostatic transmission
- FR.Front
- IN.Inlet
- L (100L) .Link (100 Links)
- L.Left
- MMMillimeter
- MT.Manual Transmission
- P.T.O.Power take off
- R.Right
- RR.Rear
- STD.Standard
- T (22T) ...Tooth (22 Teeth)
- VVolt
- WWatt

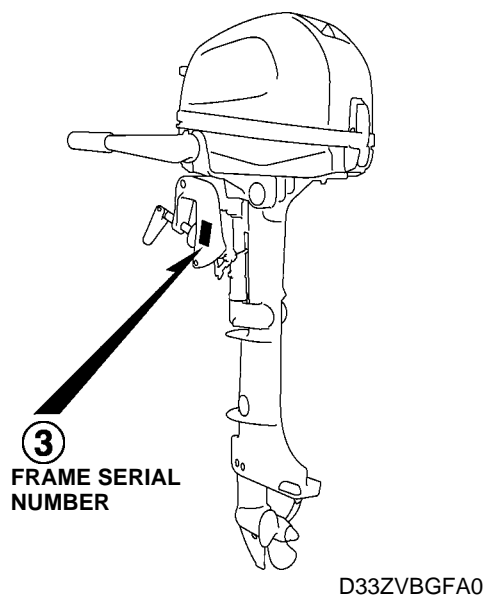
How to check the part block and serial numbers



D33ZVBGCA0



D33ZVBGEA0



D33ZVBGFA0

Models, parts catalogue codes and applicable serial numbers

1

- Models, parts catalogue codes and applicable serial Nos. given in this parts catalogue can be identified as follows.

Model	Type	Parts catalogue type	Engine		Applicable engine serial No.	Applicable frame serial No.	Applicable carburetor identification No.		
			Model	Type					
BF4AH	LHND	LHND	BF4AH	SE3	BEACC-1000001~	BACC-1000001~	BC05H A		
	LHNU	LHNU		SE1			BC05J A		
	SHND	SHND		SE3			BC05H A		
	SHNU	SHNU		SE1			BC05J A		
BF4.9DH	LHND	LHND	BF5DH	SE3	BEADC-1000001~	BADC-1000001~	BC05L A		
	SHNK	SHNK		SE4					
BF5DH	LHD	LHD		SE3			BEADC-1000001~	BADC-1000001~	BC05M A
	LHND	LHND		SE1					
	LHNU	LHNU		SE2					BC05L A
	LHU	LHU		SE4					
	SHD	SHD		SE3					BC05M A
	SHND	SHND		SE1					
	SHNU	SHNU		SE2					
	SHU	SHU		SE4					
BF6AH	LHD	LHD	BF6AH	SE3	BEAEC-1000001~	BAEC-1000001~	BC11C A		
	LHND	LHND		SE1			BC11D A		
	LHNH	LHNH		SE2					
	LHNU	LHNU		SE4			BC11C A		
	LHU	LHU		SE3					
	SHD	SHD		SE1			BC11D A		
	SHND	SHND		SE2					
	SHNH	SHNH		SE3					
	SHNU	SHNU		SE1					
	SHU	SHU		SE2					

* Of carburetor identification numbers, only the portions underlined in the example below are used for registration.

BC 05H A KC ㊦
(A) (B)

Features of each type

- See the following table for the features of each type. (Items in brackets are optional)

Specifications		Model	BF4AH				BF4.9DH		BF5DH				
		Type	LHND	LHNU	SHND	SHNU	LHNK	SHNK	LHD	LHND	LHNU	LHU	SHD
Transom height	434mm			●	●		●					●	●
	561mm	●	●			●		●	●	●	●		

Specifications		Model	BF5DH		BF6AH								
		Type	SHNU	SHU	LHD	LHND	LHNH	LHNU	LHU	SHD	SHND	SHNH	SHNU
Transom height	434mm	●	●						●	●	●	●	●
	561mm			●	●	●	●	●					

Fuel hose, general purpose hoses and vinyl hose

- The standard part fuel hose, general purpose hose and vinyl hose may be substituted by the coiled bulk part.
- When ordering the standard part fuel hose, general purpose hose and vinyl hose use the bulk part number written in the parts catalog in brackets () underneath the part name.
- When exchanging the hose, cut and use at the specified length as mentioned in the part name.
(For the method of cutting the bulk part, and method of filling out orders etc., please refer to the instructions issued with the bulk part.)

Bulk part number of fuel hose, general purpose hose and vinyl hose.

Example: 9 5 0 0 1 - 7 5 0 0 1 - 5 0 M

Bulk part number:
Refers to the bulk part.

Marking code (fuel hose and general purpose hose)

Change code (Vinyl hose)

Indicates number mark or change sequence, however, the code for the bulk part must be strictly 0 (zero).

Types of code:

- | | | | | | |
|-------------|--|----------------|-------------|--------------|---------------|
| • Fuel hose | 2: Red outside braid
(3 mm inside dia. only) | • General hose | 1: Ash gray | • Vinyl hose | 1: Clear |
| | 5: Black inside braid | | 2: Ash gray | | 2: Black |
| | 3: Red (3 mm inside dia. only) | | 3: Black | | 3: Light red |
| | 4: Ash gray with red stripe
(3 mm inside dia. only) | | 5: Black | | 6: Light red |
| | 6: Black | | | | 7: Pale black |

Lengths:

- 001: 1 m (standard)
003: 3 m
008: 8 m } Application or specification of some parts is not settled.

I.D code: (fuel hose and general purpose hose)

- | | | | | |
|------------|--------------------|--------------------|-----------------------------|-----------------------------|
| 30: 3.0 mm | 50: 5.0 mm | 70: 7.0 mm | 11: 11 mm | 12: 12 (outside dia. 17) mm |
| 35: 3.5 mm | 55: 5.3 mm, 5.5 mm | 75: 7.3 mm, 7.5 mm | 91: 12 (outside dia. 15) mm | 14: 14 mm |
| 45: 4.5 mm | 65: 6.5 mm | 80: 8.0 mm | 92: 12 (outside dia. 16) mm | 17: 17 mm |

ID./OD. code: (vinyl hose)

- | | | | | |
|-------------------------|--------------------------|---------------------------|---------------------------|---------------------------|
| 01: ID. 2.9, OD. 6.8 mm | 12: ID. 5.0, OD. 7.0 mm | 21: ID. 8.0, OD. 9.0 mm | 37: ID. 11.0, OD. 15.0 mm | 50: ID. 16.0, OD. 19.0 mm |
| 03: ID. 3.0, OD. 6.0 mm | 10: ID. 5.0, OD. 8.0 mm | 23: ID. 8.0, OD. 12.0 mm | 38: ID. 12.0, OD. 13.0 mm | 55: ID. 17.5, OD. 20.5 mm |
| 05: ID. 3.5, OD. 6.5 mm | 11: ID. 5.0, OD. 9.0 mm | 25: ID. 9.0, OD. 11.0 mm | 39: ID. 12.0, OD. 14.0 mm | 60: ID. 22.0, OD. 27.0 mm |
| 07: ID. 4.0, OD. 7.0 mm | 14: ID. 6.0, OD. 9.0 mm | 27: ID. 9.0, OD. 13.0 mm | 40: ID. 12.0, OD. 16.0 mm | |
| 08: ID. 4.5, OD. 6.5 mm | 17: ID. 7.0, OD. 9.0 mm | 33: ID. 10.0, OD. 14.0 mm | 43: ID. 13.0, OD. 15.0 mm | |
| 09: ID. 4.5, OD. 8.0 mm | 19: ID. 7.0, OD. 11.0 mm | 36: ID. 11.0, OD. 13.0 mm | 45: ID. 14.0, OD. 18.0 mm | |

Hose type:

- 1: Fuel hose
3: Vinyl hose
5: General hose

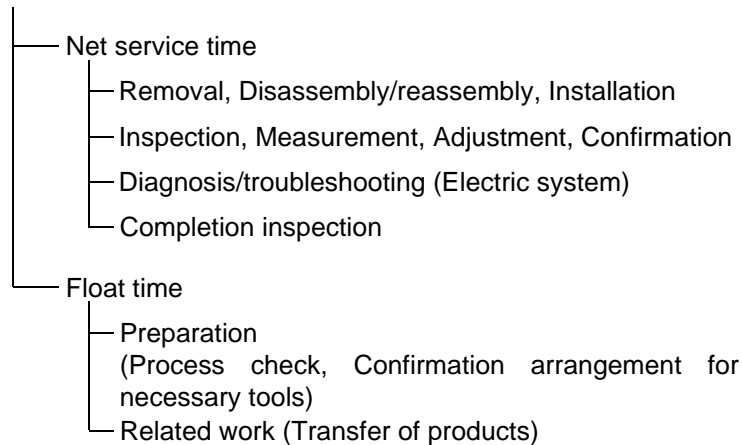
⊙ **CAUTION: It is DANGEROUS to confuse the fuel hose with the general purpose hose or vinyl hose.**

Never use a general purpose hose or vinyl hose in place of a fuel hose or vice versa. Always use the correct bulk part in the parts catalogue, according to the service manual or the instructions issued with the bulk part.

FLAT RATE SERVICE TIME

Flat rate service time (FRT) means the standard time required to service a product, which is listed in this manual to help the dealers control the actual working process and calculate the service charge by using it as a guide.

FRT setting system



* Float time is set by multiplying the net service time by a given coefficient.

Editorial style

The service items shown in the text are listed with the exchange work time for the repair sales parts as the subject. Other representative service items not using repair parts (removal/installation, adjustment, inspection/measuring, and other work) are listed collectively in the list in the preface, classified according to the work.

FRT setting standard

- Decimal system (in unit of 0.1) is adopted to set FRT as it is convenient to calculate the wage.
Example: (0.1) → 6 minutes, (0.2) → 12 minutes
[Labor cost per hour] x [FRT] = [Wage]
- FRT is set with a hand tool.
- Service items and FRT can be subject to change depending on development of tools and service equipment and improvement in service procedure.

Work procedure

- As the work procedure is set with the work time according to the method in the separate Service Manual, refer to this Manual as required.
- Work methods permitting servicing in the shortest time still permitting assurance of safe work and product warranty are used for the setting of service items not listed in the Service Manual.
- Work basically is to be performed by one person, and when two or more people are required, setting is done as the total time for the number of people.
- The set value for the technological level of the workers uses a person with three years of experience in the repair of Honda products as the standard.
- Special tools and service equipment used to set FRT are those specified or recommended in Service Manual.

Service item whose FRT is not presented

- Accessories and service parts that are not listed to use in this manual.
 - Locations with little aging deterioration or breakage during normal use.
 - Service work that can be finished by one touch.
 - Service work that is seldom done (i.e. extremely small causes of trouble and service frequency).
 - Products and parts whose location for installation differs according to its status of use and application.
- * When FRT is not presented, please calculate wages based on appropriate actual work time.

Operation not included of FRT

- Oil and coolant water draining, Waiting time for warming up operation and etc..
- Additional operation that involves removal/installation of standard exterior equipment.
- Indirect time spent for service by visiting the customer, trade-in, and delivery.
- Indirect time required for ordering and delivery of parts.
- Cost for grease, adhesive agent, etc. used for service work.

**Explanation of FRT by using an example
(The example may differ from the actual presented items)**

Ref. No.	L.O.N.	(Relative ref. Number) Description	F.R.T.
①	1111L1	④ (1, 3, 4, 7) VALVE, INTAKE4.1	②
②		• NOTE: OHV type ⑥	⑦
③	1111L1A	• Includes: Engine removal and installation One head (intake all) add1.4 ⑤	

- ① Reference No. of the illustration of part that shows location of the replacement work.
- ② FRT is an abbreviation of Flat Rate Time indicating the standard service time required for the replacement.
- ③ LON is an abbreviation of Labor Operation Number, and it is a classification of the service items by the work unit code.

The same operation code is used regardless of the models.

Standard operation is indicated with 6 digits code, and additional operation is indicated with 7 digits code.

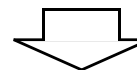
- ④ Indicating the intake valve replacement and FRT4.1.
- ⑤ Indicating FRT1.4 that will be added when additional operation (whole intake side of one cylinder head) is done in association with intake valve replacement.

- ⑥ Indicating work condition or application condition of the service item.
- ⑦ Indicating work contents that are included in the service item.
- ⑧ Indicating a reference No. whose operation and time are the same as FRT4.1 for the intake valve.

(The application range is limited to the service items without an LON setting within a same block.)

**How to refer to the service item by using the sample
(intake valve replacement)**

Open to the page of the block where the intake valve's spare part illustration is shown.



Look for the intake valve illustration, and refer to the service item and FRT that agree with the reference No.

Indication mark for the listing of service items that continues to the following page

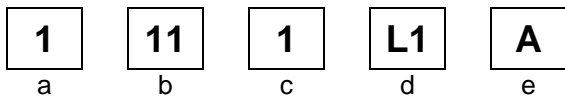
Ref. No.	L.O.N.	(Relative ref. Number) Description	F.R.T.
2	1111L1	VALVE, INTAKE	4.1
	.	.	.
	.	.	.

+
Mark indicated at the last line.

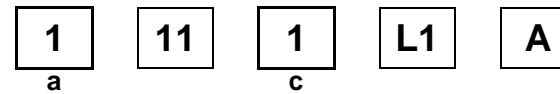
Indication of the block with no setting of FRT

Ref. No.	L.O.N.	(Relative ref. Number) Description	F.R.T.
NO INFORMATION			

• LON code system



- a) Category code..... Engine
- b) Location/function code..... Engine upper
- c) Operation code..... Replace
- d) Operation sequence number (Unit code can be shown with alphabet)
..... Intake valve
(No regular rule of code)
- e) Additional code One head (intake all)
(No regular rule of code)



a) Category codes and classification

Code	Category
1	Engine
2	Power drive
3	Fuel & Exhaust
4	Frame & Body
5	Steering
6	Electrical
7	Axle & Brake
8	Control system
9	-
0	Attachments

c) Operation codes and classification

Code	Operation category
1	Replace, Removal/Installation, Change
2	Overhaul
3	Adjust, Rotation
4	(Paint-related work: Top-coat)
5	Test, Inspect/diagnose, Measurement
6	(Overhaul-related work: Rebare)
7	(Overhaul-related work: Reseal)
8	(Resurface)
9	(Paint-related work: Refinish)
0	Repair, Cleaning, Air bleeding

Major service items without using spare parts

- (1) Removal/Installation, (2) Adjustment,
(3) Inspection/Masurement, (4) Overhaul, (5) Other work

E: Engine, T: Transmission, D: Drive system,
B: Body and related parts

(1) Removal/Installation

Set with the parts configuration in the status of being removed from the product.

	LON	DESCRIPTION	FRT
E	1001A2	ENGINE-REMOVAL/INSTALLATION	0.9
D	2101S4	GEAR CASE-REMOVAL/INSTALLATION	0.2

(2) Adjustment

	LON	DESCRIPTION	FRT
E	1113A1	VALVE CLEARANCE-ADJUSTMENT NOTE: For 1 product	0.4
	3113A2	CARBURETOR IDLE-ADJUSTMENT	0.3
	8113B1	THROTTLE CABLE-ADJUSTMENT	0.3

(3) Inspection, Measurement, Cleaning

	LON	DESCRIPTION	FRT
E	1100A0	ENGINE OIL STRAINER-CLEANING INCLUDES: Engine oil-change INCLUDES: Engine-removal/installation	1.0
	1105A0	ENGINE OIL-INSPECTION	0.1
	6140A0	SPARK PLUG-ADJUSTMENT/CLEANING INCLUDES: Spark plug check NOTE: For 1 product	0.1

(4) Overhaul

Work condition: The required Measurements, inspections, adjustments, and cleaning/washing of each part are performed, including the main body removal/installation work and the replacement of defective parts.

	LON	DESCRIPTION	FRT
E	3112A0	CARBURETOR-OVERHAUL INCLUDES: All necessary adjustment	0.6

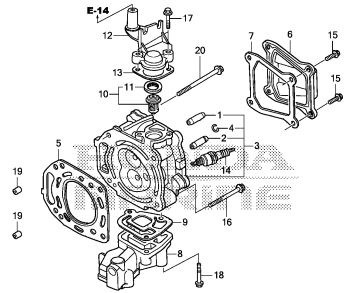
(5) Other work

	LON	DESCRIPTION	FRT
E	1101E1	ENGINE OIL-CHANGE INCLUDES: Engine oil-inspection	0.2
D	2101S3	GEAR CASE OIL-CHANGE	0.2

ENGINE GROUP

E-2

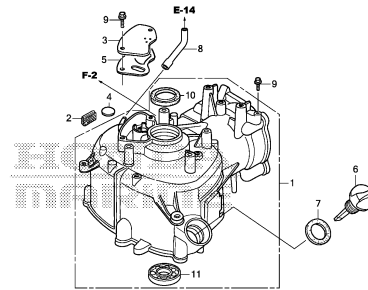
CYLINDER HEAD



ZV3E0200

E-3

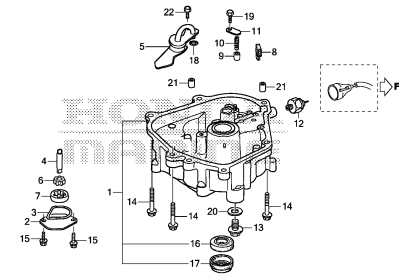
CYLINDER BARREL



ZV3E0300

E-6

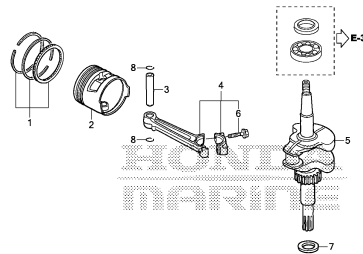
OIL PAN



ZV3E0600

E-7

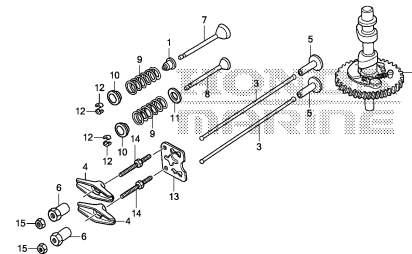
CRANKSHAFT/PISTON



ZV3E0700

E-9

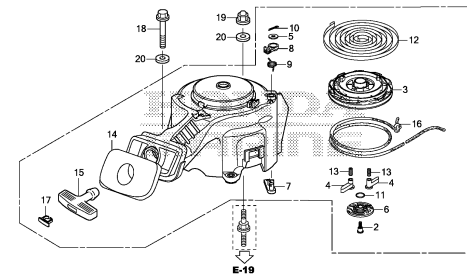
CAMSHAFT



ZV3E0900

E-11

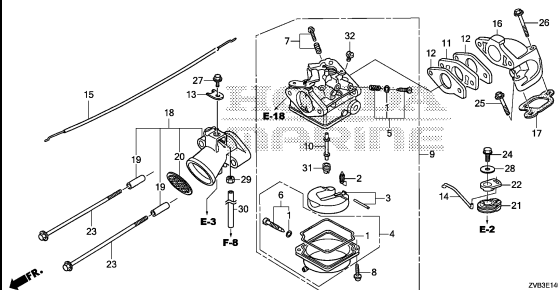
RECOIL STARTER



ZV3E1100

E-14

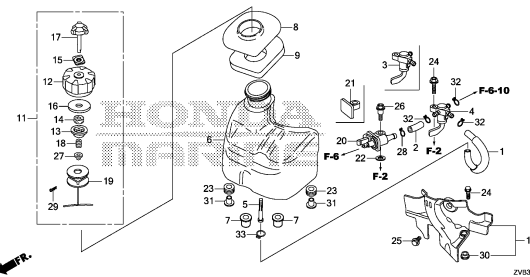
CARBURETOR



ZV3E1400

E-17

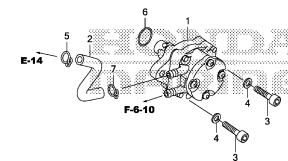
FUEL TANK



ZV3E1700

E-18

FUEL PUMP



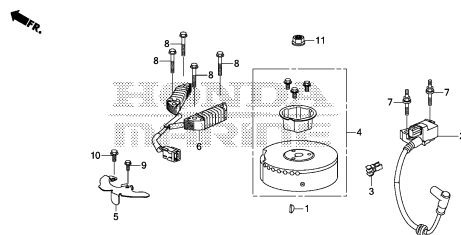
ZV3E1800

2

ENGINE GROUP

E-19

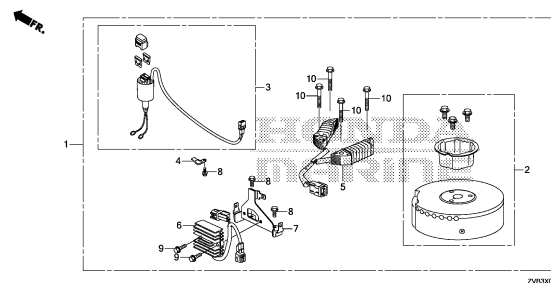
FLYWHEEL/IGNITION COIL



ZV83C1900

EOP-2

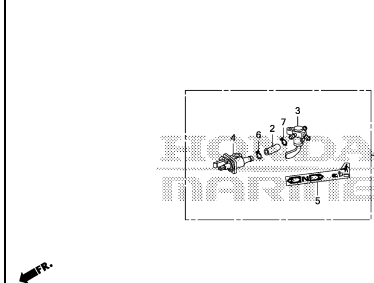
CHARGE RECEPTACLE KIT



ZV83X0200

EOP-3

FUEL CONNECTOR KIT



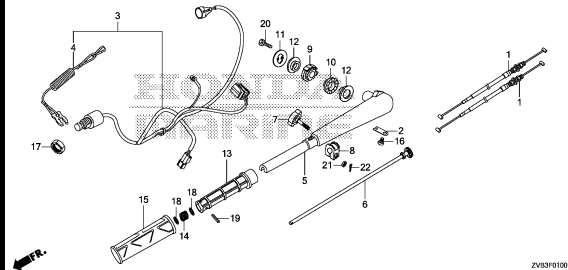
ZV83X0300

2

FRAME GROUP

F-1

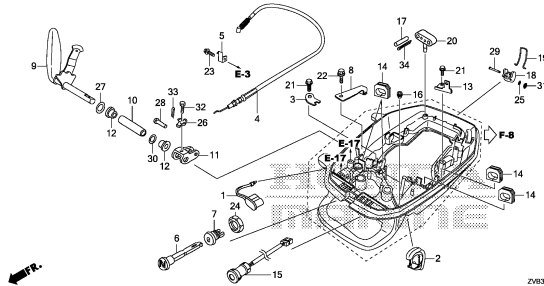
STEERING HANDLE



ZV83F0100

F-2

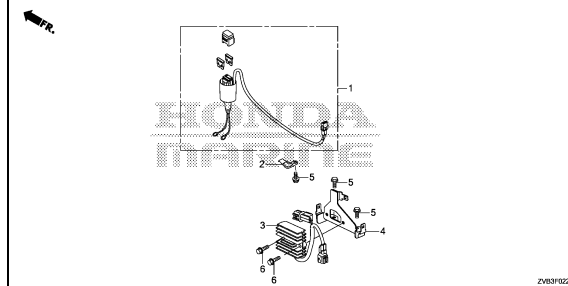
SHIFT SHAFT/COVER LOCK LEVER



ZV83F0200

F-2-20

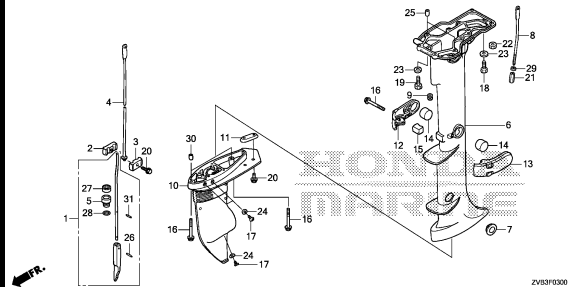
REGULATOR RECTIFIER



ZV83F0220

F-3

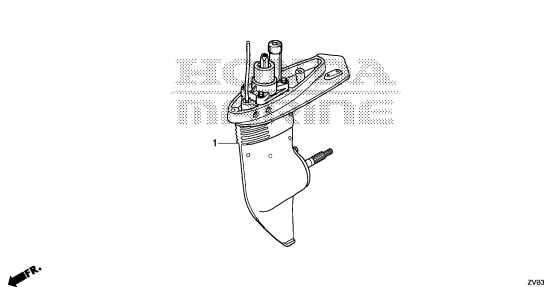
EXTENSION CASE/GEAR CASE



ZV83F0300

F-3-10

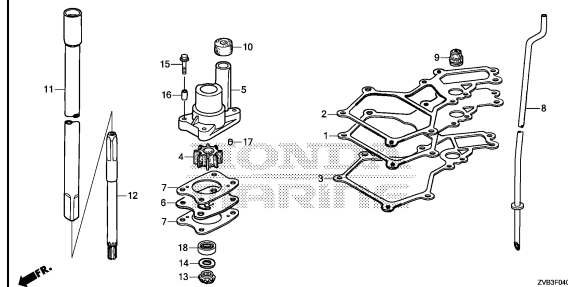
GEAR CASE ASSY



ZV83F0310

F-4

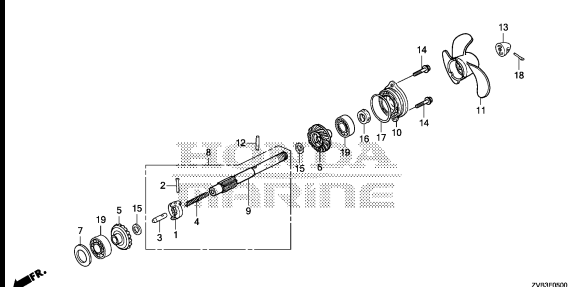
VERTICAL SHAFT



ZV83F0400

F-5

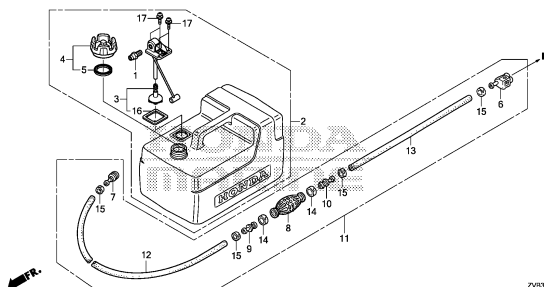
PROPELLER SHAFT/PROPELLER



ZV83F0500

F-6

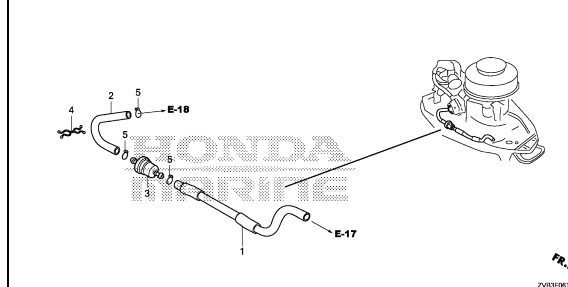
FUEL TANK



ZV83F0600

F-6-10

FUEL STRAINER



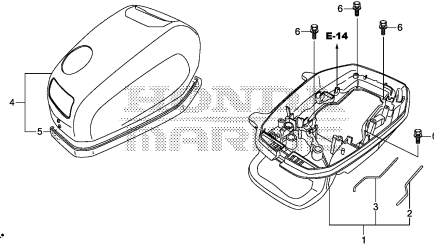
ZV83F0610

3

FRAME GROUP

F-8

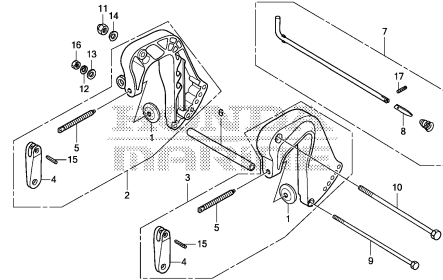
ENGINE COVER



ZV83F080

F-10

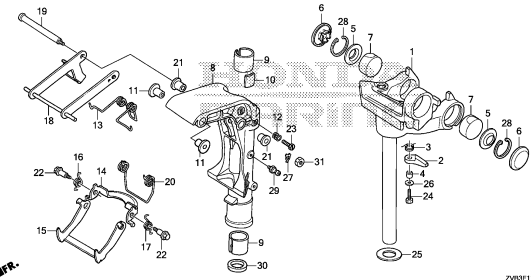
STERN BRACKET



ZV83F100

F-11

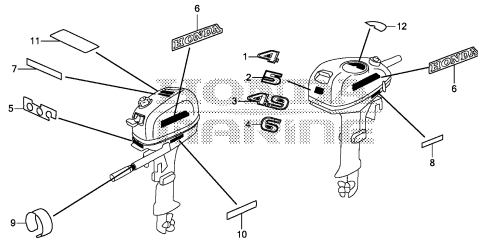
SWIVEL CASE/MOUNT FRAME



ZV83F110

F-12

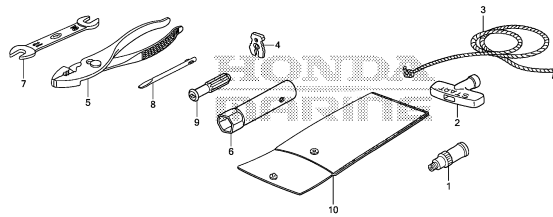
LABEL



ZV83F120

F-13

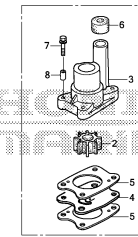
TOOL/WATER HOSE JOINT



ZV83F130

FOP-2

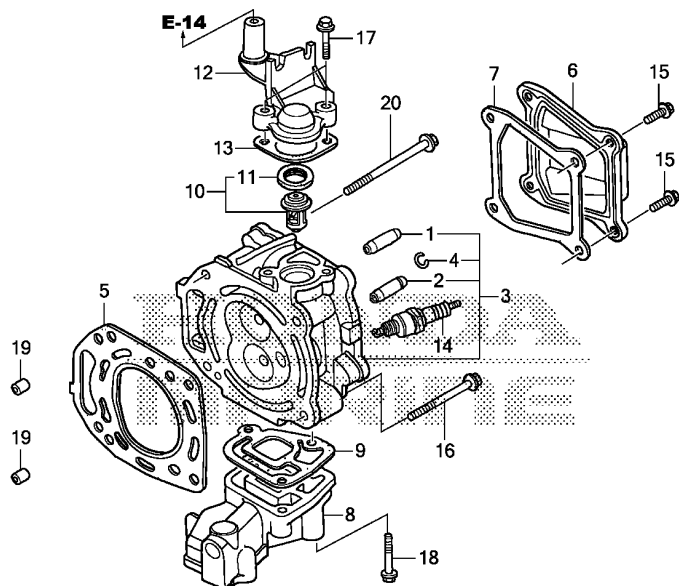
WATER PUMP IMPELLER KIT



ZV83Y020

E-2

CYLINDER HEAD



Ref. No.	L.O.N.	(Relative ref. Number) Description	F.R.T.
1	1111E9	GUIDE, INTAKE VALVEINCLUDES: Engine removal and installation .INCLUDES: Valve clearance adjustment	1.2
	1111E9E	.Replace intake and exhaust all add	0.2
2	1111E8	GUIDE, EXHAUST VALVEINCLUDES: Engine removal and installation .INCLUDES: Valve clearance adjustment	1.2
	1111E8E	.Replace intake and exhaust all add	0.2
3	1111N3	HEAD, CYLINDERINCLUDES: Engine removal and installation .INCLUDES: Valve clearance adjustment and reface	1.3
5	1111N4	GASKET, CYLINDER HEADINCLUDES: Engine removal and installation	1.0
6	1111D5	(7) CYLINDER HEAD COVER AND/OR PACKING	0.2

Ref. No.	Part No.	Description	Reqd. QTY				Serial No.	Parts catalogue code
			BF 4	BF 4.9	BF 5	BF 6		
1	12204-Z1T-305	GUIDE, IN. VALVE(O.S.)	1	1	1	1		
2	12205-Z1T-305	GUIDE, EX. VALVE(O.S.)	1	1	1	1		
3	12210-ZVD-000ZA	HEAD COMP., CYLINDER *NH8*.....DARK GRAY	1	1	1	1		
4	12216-ZE5-300	CLIP, VALVE GUIDE	1	1	1	1		
5	12251-ZVD-000	GASKET, CYLINDER HEAD	1	1	1	1		
6	12311-ZV1-010	COVER, HEAD	1	1	1	1		
7	12391-ZVD-000	PACKING, HEAD COVER	1	1	1	1		
8	18110-ZVD-000ZA	MANIFOLD COMP., EX. *NH8*.....DARK GRAY	1	1	1	1		
9	18115-ZVD-000	GASKET, EX. MANIFOLD	1	1	1	1		
10	19300-881-761	THERMOSTAT ASSY.	1	1	1	1		
11	19302-921-003	RUBBER, THERMOSTAT	1	1	1	1		
12	19310-ZVD-000ZA	COVER, THERMOSTAT *NH8*.....DARK GRAY	1	1	1	1		
13	19351-ZVD-000	PACKING, THERMOSTAT COVER ...	1	1	1	1		
14	31916-ZVD-003	PLUG, SPARK(BKR6E-E)	1	1	1	1		
15	90013-ZVD-000	BOLT, FLANGE, 6X12	4	4	4	4		
16	90018-ZVD-000	BOLT, FLANGE, 8X60	2	2	2	2		
17	90030-ZY3-000	BOLT, FLANGE, 6X22	2	2	2	2		
18	90031-ZY3-000	BOLT, FLANGE, 6X32	3	3	3	3		
19	94301-10160	DOWEL PIN, 10X16	2	2	2	2		
20	95801-08090-09	BOLT, FLANGE, 8X90	2	2	2	2		

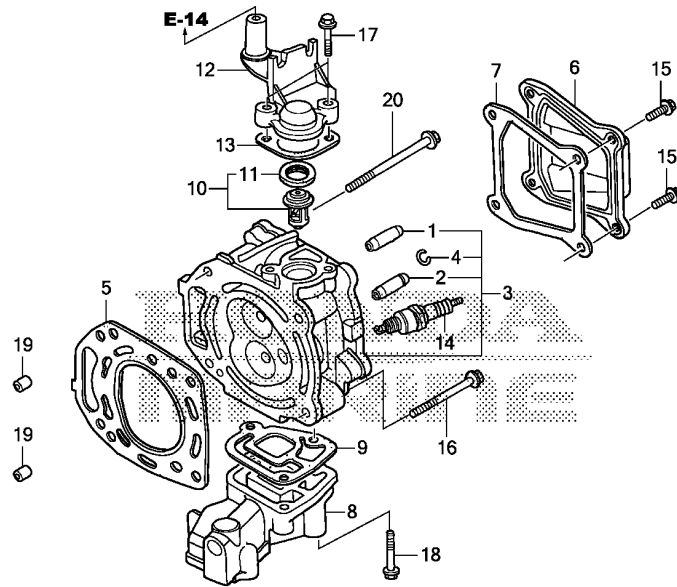
2

FR.

ZVB3E0200

E-2

CYLINDER HEAD

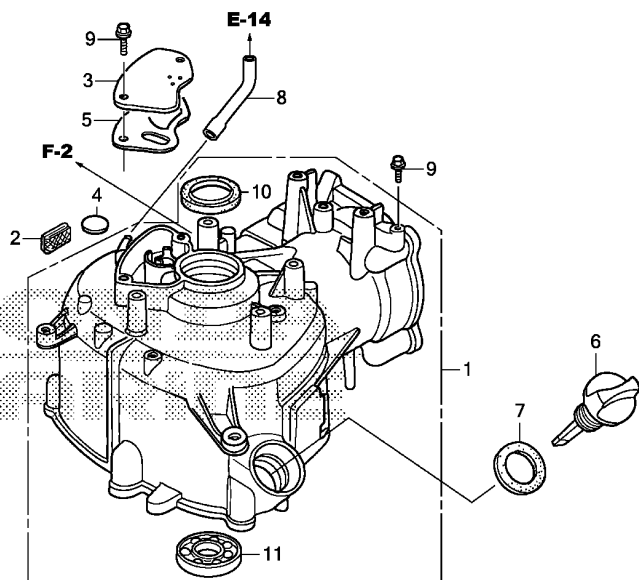


Ref. No.	L.O.N.	(Relative ref. Number) Description	F.R.T.
8	3131C2	MANIFOLD, EXHAUSTINCLUDES: Engine removal and installation	0.9
9	3131B3	GASKET, EXHAUST MANIFOLDINCLUDES: Engine removal and installation	0.9
10	1141D0	THERMOSTAT (11)	0.2
12	1141A6	THERMOSTAT COVER AND/OR PACKING (13)	0.2
14	6141C1	PLUG, SPARKINCLUDES: Spark plug check	0.1

ZVB3E0200

E-3

CYLINDER BARREL



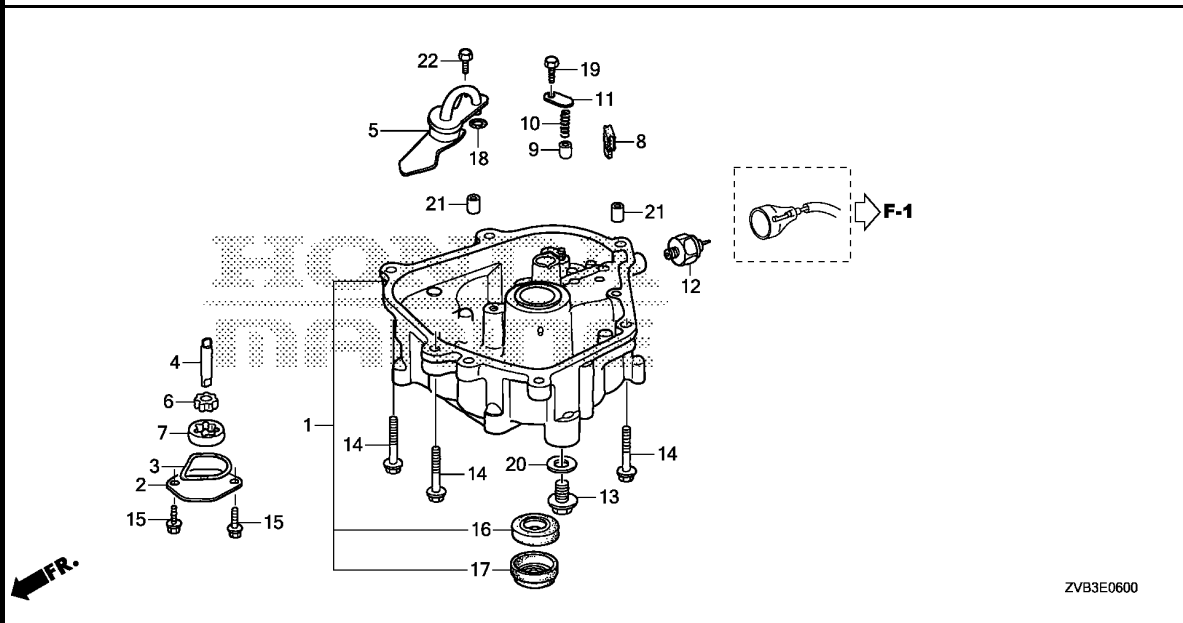
ZVB3E0300

Ref. No.	L.O.N.	(Relative ref. Number) Description	F.R.T.
1	1101A0	BARREL, CYLINDERINCLUDES: Engine removal and installation	1.3
2	1111E5	FILTER, BREATHER	0.1
4	1111K9	VALVE, BREATHER	0.1
5	1111C9	BREATHER CHAMBER CAP AND/OR BREATHER CAP PACKING	0.1
8	1111K5	TUBE, BREATHER	0.1
10	1101E6	OIL SEAL, CRANKSHAFT :UPPER .. .INCLUDES: Engine removal and installation	1.3
11	1101J6	BEARING, CRANKSHAFT :UPPERINCLUDES: Engine removal and installation	1.4

Ref. No.	Part No.	Description	Reqd. QTY				Serial No.	Parts catalogue code
			BF 4	BF 4.9	BF 5	BF 6		
1	12000-ZVD-000ZA	BARREL ASSY., CYLINDER *NH8*.....DARK GRAY	1	1	1	1		
2	12367-ZVD-000	FILTER, BREATHER	1	1	1	1		
3	12371-ZVD-000	CAP, BREATHER CHAMBER	1	1	1	1		
4	12372-ZVD-000	VALVE, BREATHER	1	1	1	1		
5	12373-ZVD-000	PACKING, BREATHER CAP	1	1	1	1		
6	15620-ZVD-000	CAP, OIL FILLER	1	1	1	1		
7	15625-ZVD-000	PACKING, OIL FILLER CAP	1	1	1	1		
8	15721-ZVD-000	TUBE, BREATHER	1	1	1	1		
9	90117-ZVA-000	BOLT, FLANGE, 6X12	3	3	3	3		
10	91252-888-003	OIL SEAL, 25X38X7(ARAI)	1	1	1	1		
11	96100-62050-00	BEARING, RADIAL BALL, 6205 ..	1	1	1	1		

E-6

OIL PAN



ZVB3E0600

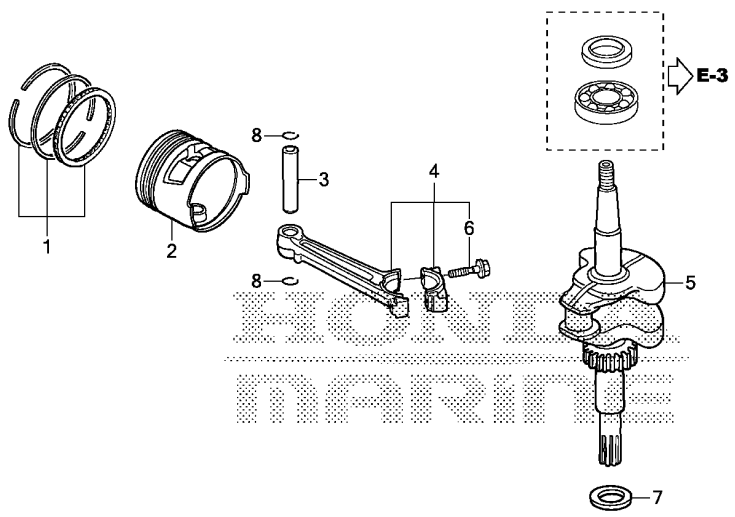
Ref. No.	L.O.N.	(Relative ref. Number) Description	F.R.T.
1	1131C1	PAN, OILINCLUDES: Engine removal and installation	1.1
5	1131B5	STRAINER, OILINCLUDES: Engine removal and installation	1.0
6	1131B2	ROTOR, OIL PUMP INNERINCLUDES: Engine removal and installation	0.9
9	3121J8	VALVE, CHECKINCLUDES: Engine removal and installation	1.0
12	6151E4	SWITCH, OIL PRESSUREINCLUDES: Engine removal and installation	0.3
16	1101E7	OIL SEAL, CRANKSHAFT :LOWER .. .INCLUDES: Engine removal and installation	1.1

Ref. No.	Part No.	Description	Reqd. QTY				Serial No.	Parts catalogue code
			BF 4 AH	BF 4.9 DH	BF 5 DH	BF 6 AH		
1	11300-ZVD-000ZA	PAN ASSY., OIL *NH8*.....DARK GRAY	1	1	1	1		
2	15130-ZVD-000	COVER, OIL PUMP	1	1	1	1		
3	15131-ZVD-000	O-RING, PUMP COVER	1	1	1	1		
4	15136-ZVD-000	SHAFT, OIL PUMP	1	1	1	1		
5	15220-ZVD-000	STRAINER COMP., OIL	1	1	1	1		
6	15331-KRF-S00	ROTOR, OIL PUMP INNER	1	1	1	1		
7	15332-KRF-S00	ROTOR, OIL PUMP OUTER	1	1	1	1		
8	15335-ZVD-000	RUBBER, OIL RETURN	1	1	1	1		
9	15473-ZVD-000	VALVE, CHECK	1	1	1	1		
10	15474-ZVD-000	SPRING, CHECK VALVE	1	1	1	1		
11	15475-ZVD-000	PLATE, CHECK VALVE	1	1	1	1		
12	35490-ZW9-003	SWITCH ASSY., OIL PRESSURE ..	1	1	1	1		
13	90004-ZVD-000	BOLT, DRAIN PLUG, 12MM	1	1	1	1		
14	90036-ZVD-000	BOLT, FLANGE, 8X32	6	6	6	6		
15	90117-ZVA-000	BOLT, FLANGE, 6X12	2	2	2	2		
16	91252-888-003	OIL SEAL, 25X38X7(ARAI)	1	1	1	1		
17	91255-ZV1-003	SEAL, COUPLING, 25X40X14	1	1	1	1		
18	91305-639-000	O-RING, 9.5X3	1	1	1	1		
19	92101-06012-0A	BOLT, HEX., 6X12	1	1	1	1		
20	94109-12000	WASHER, DRAIN PLUG, 12MM	1	1	1	1		
21	94301-08140	DOWEL PIN, 8X14	2	2	2	2		
22	96300-06012-00	BOLT, FLANGE, 6X12	1	1	1	1		



E-7

CRANKSHAFT/PISTON



ZVB3E0700

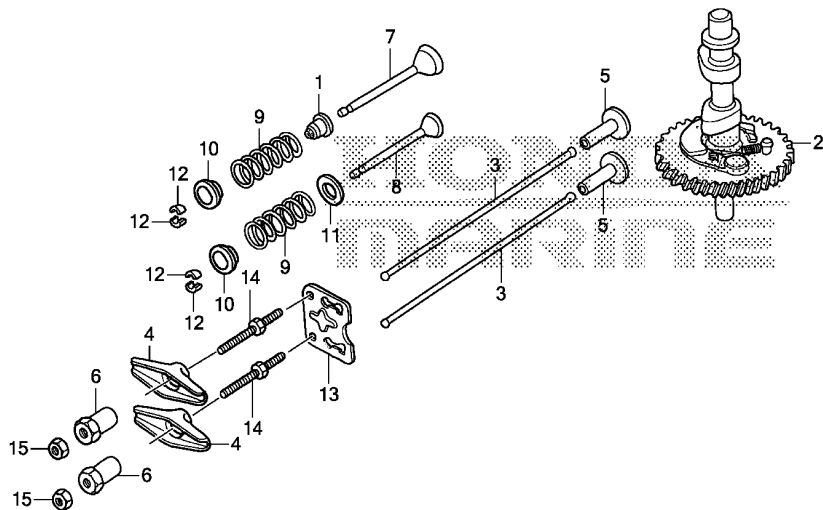
Ref. No.	L.O.N.	(Relative ref. Number) Description	F.R.T.
2	1111R1	(1,3,4) PISTON AND/OR RING SET AND/OR BEARING AND/OR RODINCLUDES: Engine removal and installation	1.2
5	1101F0	CRANKSHAFTINCLUDES: Engine removal and installation	1.3

Ref. No.	Part No.	Description	Reqd. QTY				Serial No.	Parts catalogue code
			BF 4	BF 4.9	BF 5	BF 6		
1	13010-Z4F-004	RING SET, PISTON(STD.) (TEIKOKU)	1	1	1	1		
2	13101-ZVD-000	PISTON	1	1	1	1		
3	13111-ZVD-000	PIN, PISTON	1	1	1	1		
4	13200-ZVD-000	ROD ASSY., CONNECTING	1	1	1	1		
5	13310-ZVD-000	CRANKSHAFT COMP.	1	1	1	1		
6	90001-Z1T-000	BOLT, CONNECTING ROD	2	2	2	2		
7	90459-ZVD-000	WASHER, THRUST, 25MM	1	1	1	1		
8	90551-ZE1-000	CLIP, PISTON PIN, 18MM	2	2	2	2		

2

E-9

CAMSHAFT



ZVB3E0900

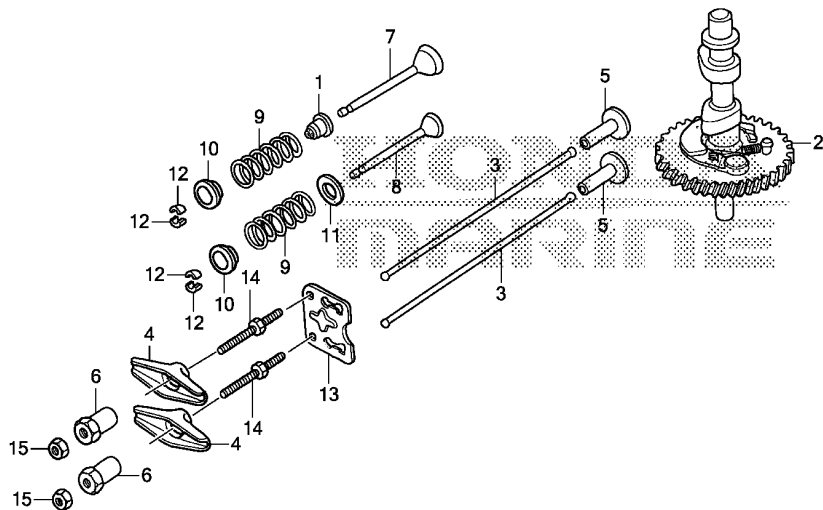
Ref. No.	L.O.N.	(Relative ref. Number) Description	F.R.T.
1	1111K2	SEAL, INTAKE VALVE STEMINCLUDES: Engine removal and installation .INCLUDES: Valve clearance adjustment	1.0
2	1111C2	CAMSHAFTINCLUDES: Engine removal and installation	0.9
3	1111L6	ROD, PUSH :INTAKEINCLUDES: Valve clearance adjustment	0.3
	1111L7	ROD, PUSH :EXHAUSTINCLUDES: Valve clearance adjustment	0.3
4	1111A2	ARM, ROCKER :INTAKEINCLUDES: Valve clearance adjustment	0.3
	1111A1	ARM, ROCKER :EXHAUSTINCLUDES: Valve clearance adjustment	0.3
5	1111L9	LIFTER, VALVE :INTAKENOTE: Same time for two units	1.0
	1111M0	LIFTER, VALVE :EXHAUSTNOTE: Same time for two units	1.0
+ 7	1111L1	VALVE, INTAKE	1.1

Ref. No.	Part No.	Description	Reqd. QTY				Serial No.	Parts catalogue code
			BF 4	BF 4.9	BF 5	BF 6		
			AH	DH	DH	AH		
1	12209-ZVD-G01	SEAL, VALVE STEM	1	1	1	1		
2	14100-ZVB-000	CAMSHAFT ASSY.	1	-	-	-		
	14100-ZVD-000	-	1	1	1		
3	14410-ZE1-010	ROD, PUSH	2	2	2	2		
4	14431-ZE1-000	ARM, VALVE ROCKER	2	2	2	2		
5	14441-ZE1-010	LIFTER, VALVE	2	2	2	2		
6	14451-Z7E-000	PIVOT, ROCKER ARM	2	2	2	2		
7	14711-ZVD-000	VALVE, IN.	1	1	1	1		
8	14721-ZVD-000	VALVE, EX.	1	1	1	1		
9	14751-ZVD-000	SPRING, VALVE	2	2	2	2		
10	14771-ZVD-000	RETAINER, VALVE SPRING	2	2	2	2		
11	14775-ZVD-000	SEAT, VALVE SPRING	1	1	1	1		
12	14781-107-003	COTTER, VALVE(SANKO)	4	4	4	4		
13	14791-ZE1-010	PLATE, PUSH ROD GUIDE	1	1	1	1		
14	90012-ZE0-010	BOLT, PIVOT, 8MM	2	2	2	2		
15	90206-ZE1-000	NUT, PIVOT ADJUSTING	2	2	2	2		



E-9

CAMSHAFT



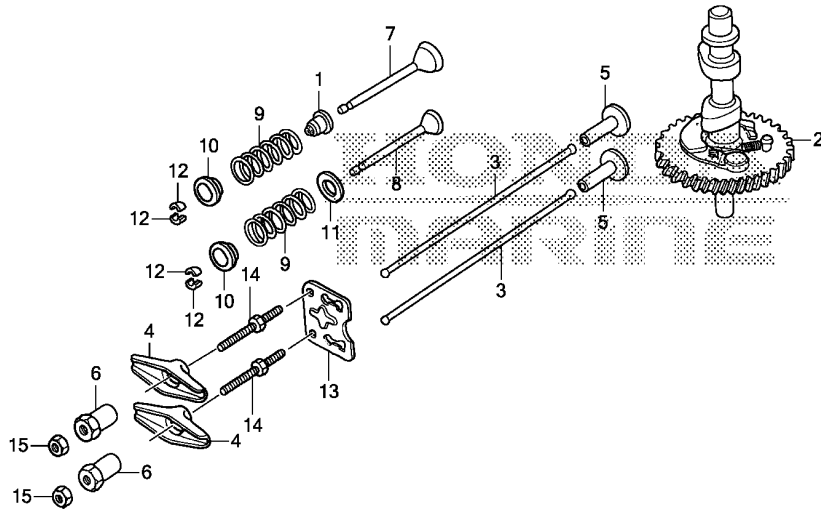
FR. →

ZVB3E0900

Ref. No.	L.O.N.	(Relative ref. Number) Description	F.R.T.
+ 7		.INCLUDES: Engine removal and installation .INCLUDES: Valve clearance adjustment and reface	
1111L1E		.Replace intake and exhaust all add	0.1
8 1111L0		VALVE, EXHAUST	1.1
		.INCLUDES: Engine removal and installation .INCLUDES: Valve clearance adjustment and reface	
1111L0E		.Replace intake and exhaust all add	0.1
9 1111P3		SPRING, VALVE :INTAKE	1.0
		.INCLUDES: Engine removal and installation .INCLUDES: Valve clearance adjustment	
1111P3A		.Replace intake and exhaust all add	0.1
1111P4		SPRING, VALVE :EXHAUST	1.0
		.INCLUDES: Engine removal and installation .INCLUDES: Valve clearance adjustment	
+		Valve clearance adjustment	

E-9

CAMSHAFT



FR. →

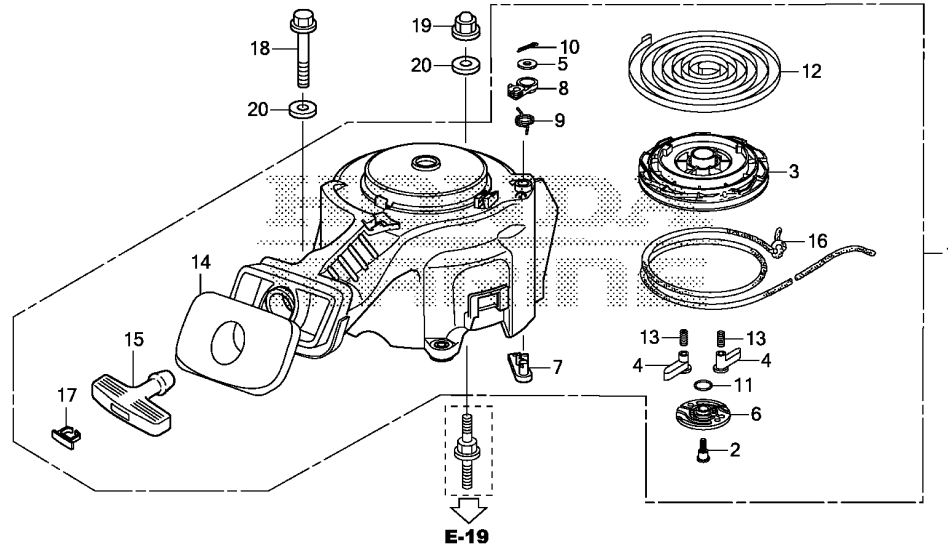
ZVB3E0900

Ref. No.	L.O.N. (Relative ref. Number)	Description	F.R.T.
+ 9	1111P4A	.Replace intake and exhaust all add	0.1



E-11

RECOIL STARTER



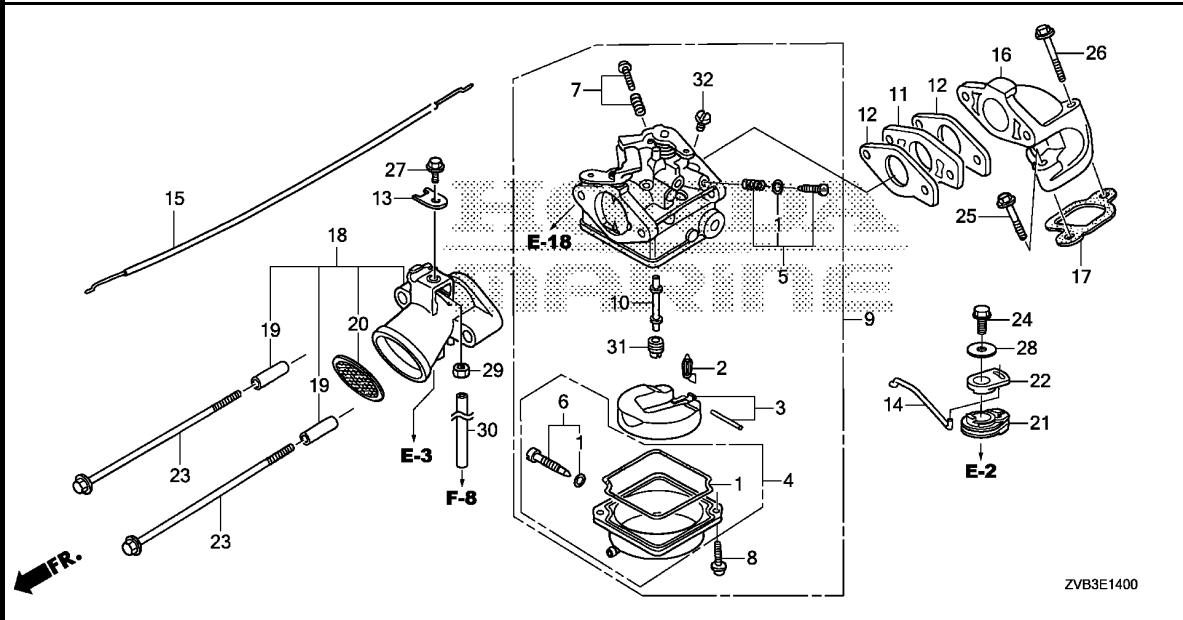
ZVB3E1100

Ref. No.	L.O.N.	(Relative ref. Number) Description	F.R.T.
1	1121B9	STARTER, RECOIL	0.1
3	1121B1	REEL, RECOIL STARTER	0.4
4		(13)	
	1121B0	STARTER RATCHET AND/OR SPRING	0.2
6	1121A4	GUIDE, RATCHET	0.1
8		(5,9)	
	1121A0	ARM, REEL STOPPER	0.1
11	1121D6	SPRING, FRICTION	0.2
12	1121B7	SPRING, RECOIL STARTER RETURN	0.4
16	1121B3	ROPE, RECOIL STARTER	0.4

Ref. No.	Part No.	Description	Reqd. QTY				Serial No.	Parts catalogue code
			BF 4	BF 4.9	BF 5	BF 6		
			AH	DH	DH	AH		
1	28400-ZVD-013	STARTER ASSY., RECOIL	1	1	1	1		
2	28417-ZVD-003	SCREW, TAPPING, 5X20	1	1	1	1		
3	28421-ZVD-003	REEL, RECOIL STARTER	1	1	1	1		
4	28422-ZVD-003	RATCHET, STARTER	2	2	2	2		
5	28432-ZV4-003	WASHER	1	1	1	1		
6	28433-ZE1-711	GUIDE, RATCHET	1	1	1	1		
7	28435-ZV4-003	STOPPER, REEL	1	1	1	1		
8	28436-ZV4-003	ARM, STOPPER	1	1	1	1		
9	28437-ZVD-003	SPRING, STOPPER	1	1	1	1		
10	28438-ZV4-003	PIN, SPLIT	1	1	1	1		
11	28441-ZH8-003	SPRING, FRICTION	1	1	1	1		
12	28442-ZVD-003	SPRING, RECOIL STARTER	1	1	1	1		
13	28443-ZH8-003	SPRING, RETURN	2	2	2	2		
14	28450-ZVD-000	SEAL COMP., RECOIL	1	1	1	1		
15	28461-ZV4-013	GRIP, STARTER	1	1	1	1		
16	28462-ZVD-003	ROPE, RECOIL STARTER	1	1	1	1		
17	28466-ZW9-003	CAP, STARTER KNOB	1	1	1	1		
18	90019-ZVD-000	BOLT, FLANGE, 6X40	2	2	2	2		
19	90202-ZVD-000	NUT, FLANGE CAP, 6MM	2	2	2	2		
20	90403-ZW1-000	WASHER, PLAIN, 6MM	4	4	4	4		

E-14

CARBURETOR



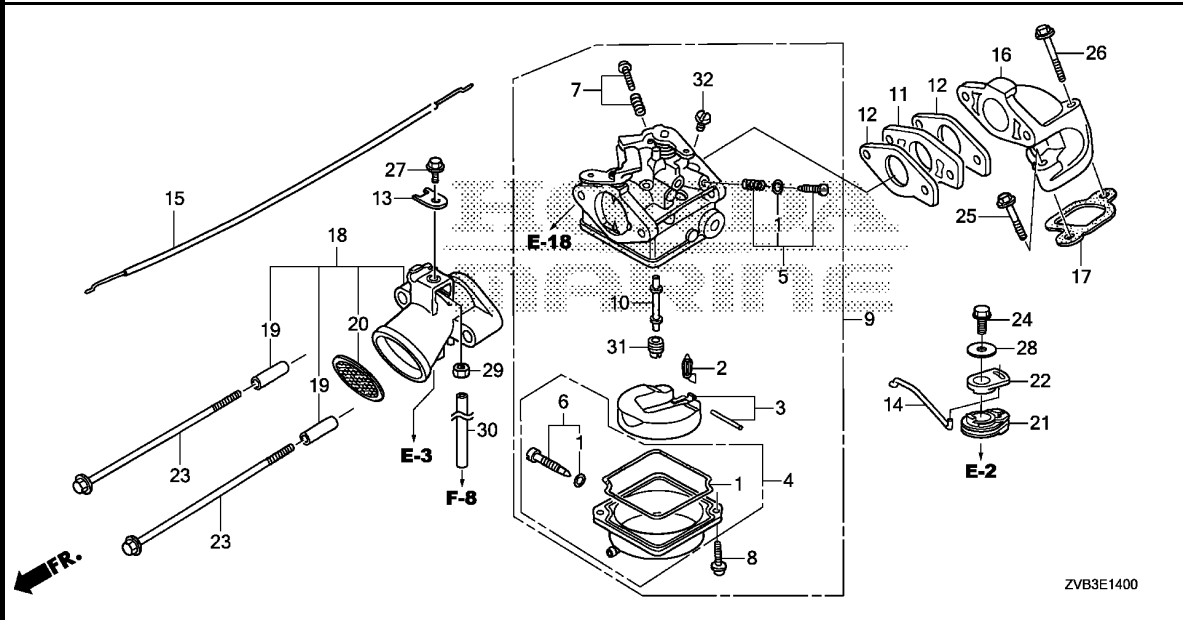
Ref. No.	L.O.N.	(Relative ref. Number) Description	F.R.T.
1	3111B1	GASKET SET, CARBURETOR	0.3
2	3111E1	FLOAT VALVE SET AND/OR FLOAT SET	0.3
9	3111F3	CARBURETOR	0.2
11	3111C0	CARBURETOR INSULATOR AND/OR PACKING	0.2
12	3111C8	PACKING, CARBURETOR	0.2
.NOTE: Same time for two units			
14	8101R4	ROD, THROTTLE	0.2
15	8111A9	CABLE, CHOKE	0.3
16	3111C4	MANIFOLD, INTAKE	0.2
17	3111C9	PACKING, INTAKE MANIFOLD	0.2
18	3121C7	GUIDE, AIR INTAKE	0.2
20	3121F6	TRAP, FRAME	0.2
21	8101EC	ARM A, THROTTLE	0.2
22	8101ED	ARM B, THROTTLE	0.2
31	3111C3	JET, MAIN	0.3

Ref. No.	Part No.	Description	Reqd. QTY				Serial No.	Parts catalogue code
			BF 4	BF 4.9	BF 5	BF 6		
1	16010-881-A00	GASKET SET	1	1	1	1		
2	16011-ZV1-F01	VALVE SET, FLOAT	1	1	1	1		
3	16013-ZV1-F01	FLOAT SET	1	1	1	1		
4	16015-ZVD-701	CHAMBER SET, FLOAT	1	1	1	1		
5	16016-ZVB-701	SCREW SET	1	-	-	-	LHND,SHND	
	16016-ZVB-003		1	-	-	-	LHNU,SHNU	
	16016-ZV1-F01		-	1	1	1	LHD,LHND,LHNN,LHNC,SHD,SHND,SHNH,SHNK	
	16016-ZVD-003		-	-	1	1	LHNU,LHU,SHNU,SHU	
6	16024-ZY3-000	SCREW SET, DRAIN	1	1	1	1		
7	16028-ZV1-F01	SCREW SET	1	1	1	1		
8	16081-ZV1-A00	SCREW, PAN	2	2	2	2		
9	16100-ZVB-701	CARBURETOR ASSY.(BC05H A)	1	-	-	-	LHND,SHND	
	16100-ZVB-003	CARBURETOR ASSY.(BC05J A)	1	-	-	-	LHNU,SHNU	
	16100-ZVC-701	CARBURETOR ASSY.(BC05L A)	-	1	1	-	LHD,LHND,LHNC,SHD,SHND,SHNK	
	16100-ZVC-003	CARBURETOR ASSY.(BC05M A)	-	-	1	-	LHNU,LHU,SHNU,SHU	
	16100-ZVD-701	CARBURETOR ASSY.(BC11C A)	-	-	-	1	LHD,LHND,LHNN,SHD,SHND,SHNH	
	16100-ZVD-003	CARBURETOR ASSY.(BC11D A)	-	-	-	1	LHNU,LHU,SHNU,SHU	
10	16166-ZV1-F01	NOZZLE, MAIN	1	1	1	-		
	16166-ZVD-701		-	-	-	1		
11	16211-ZVD-000	INSULATOR, CARBURETOR	1	1	1	1		
12	16221-ZVD-000	PACKING, CARBURETOR	2	2	2	2		
13	16576-ZVA-000	HOLDER, CABLE	1	1	1	1		
14	16593-ZVD-000	ROD, THROTTLE	1	1	1	1		
15	16620-ZVD-000	CABLE COMP., CHOKE	1	1	1	1		
16	17101-ZVD-000	MANIFOLD, INTAKE	1	1	1	1		
17	17151-ZVD-000	PACKING, INTAKE MANIFOLD	1	1	1	1		



E-14

CARBURETOR

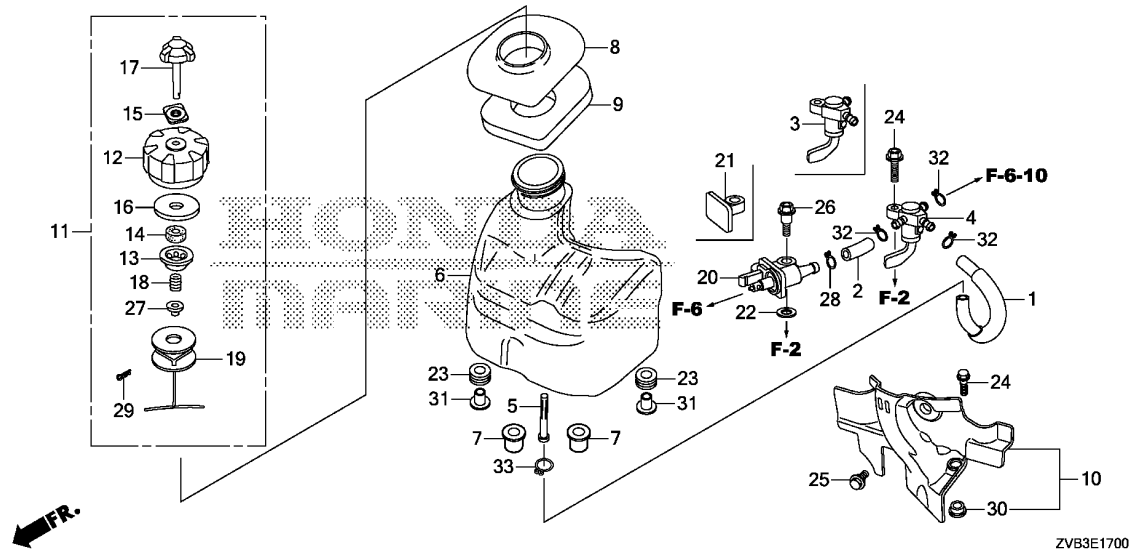


Ref. No.	Part No.	Description	Reqd. QTY				Serial No.	Parts catalogue code
			BF 4 AH	BF 4.9 DH	BF 5 DH	BF 6 AH		
18	17201-ZVD-000	GUIDE COMP., AIR	1	1	1	1		
19	17202-ZVD-000	COLLAR, DISTANCE	2	2	2	2		
20	17203-ZVD-000	TRAP, FLAME	1	1	1	1		
21	17931-ZVD-000	ARM A, THROTTLE	1	1	1	1		
22	17932-ZVD-000	ARM B, THROTTLE	1	1	1	1		
23	90012-ZV1-010	BOLT, FLANGE, 6X102	2	2	2	2		
24	90013-ZW9-000	BOLT, FLANGE, 6X12	1	1	1	1		
25	90016-ZVD-000	BOLT, FLANGE, 6X28	1	1	1	1		
26	90019-ZVD-000	BOLT, FLANGE, 6X40	1	1	1	1		
27	90117-ZVA-000	BOLT, FLANGE, 6X12	1	1	1	1		
28	90507-ZVD-000	WASHER, PLAIN, 6MM	1	1	1	1		
29	94001-06490-0S	NUT, HEX., 6MM	1	1	1	1		
30	95003-07018-31	TUBE, VINYL, 4X7X180 (95003-07001-60M)	1	1	1	1		
31	99101-ZF5-0680	JET, MAIN, #68	(1)	(1)	(1)	-		
	99101-ZF5-0700	JET, MAIN, #70	(1)	(1)	(1)	-		
	99101-ZF5-0720	JET, MAIN, #72	1	1	1	-		
	99101-ZF5-0780	JET, MAIN, #78	-	-	-	(1)		
	99101-ZF5-0800	JET, MAIN, #80	-	-	-	(1)		
	99101-ZF5-0820	JET, MAIN, #82	-	-	-	1		
32	99103-881-0350	JET COMP.(#35)	1	-	-	1		
	99103-881-0380	JET COMP.(#38)	-	1	1	-		

2

E-17

FUEL TANK



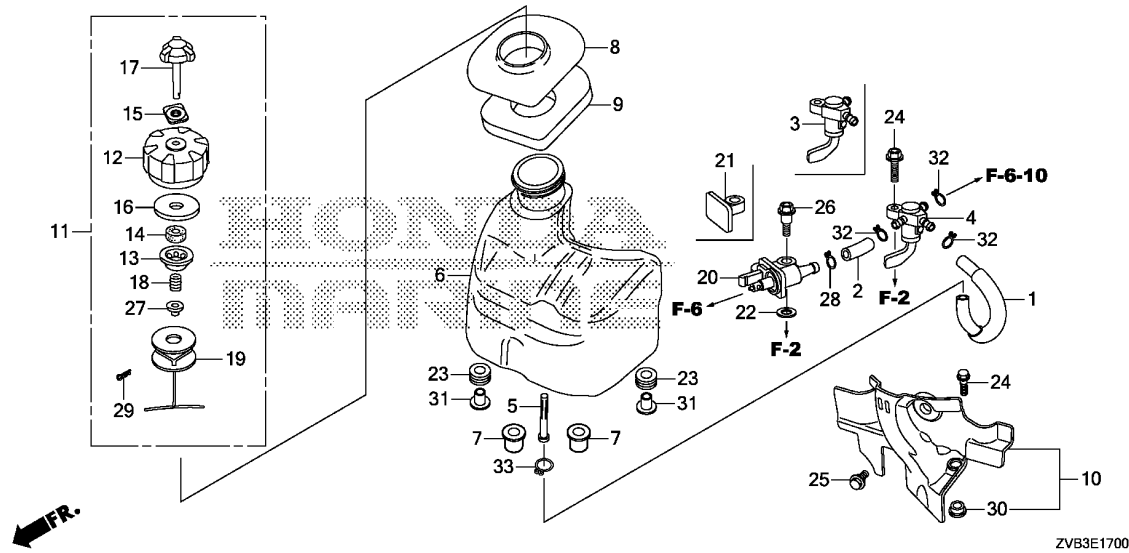
Ref. No.	L.O.N.	(Relative ref. Number) Description	F.R.T.
1	3101L0	TUBE A, FUEL	0.3
2	3101F7	TUBE B, FUEL	0.3
3	3101AC	COCK ASSY., FUEL(2WAY)	0.3
4	3101AD	COCK ASSY., FUEL(3WAY)	0.3
5	3101H8	STRAINER, FUEL	0.2
6	3101H7	TANK, FUEL	0.2
8	3101M3	RUBBER A, TANK MOUNTING	0.1
10	3101AE	INSULATOR COMP, FUEL TANK	0.2
11	3101M7	CAP, FUEL FILLER	0.1
16	3101L9	PACKING, FUEL CAP	0.1
17	3101Q9	VALVE, FUEL BREATHER	0.1
19	3101Q8	LINK, FUEL CAP	0.1
20	3101M9	CONNECTOR, FUEL	0.3

Ref. No.	Part No.	Description	Reqd. QTY				Serial No.	Parts catalogue code
			BF 4	BF 4.9	BF 5	BF 6		
1	16791-ZVD-000	TUBE COMP. A, FUEL	1	1	1	1		
2	16792-ZVD-000	TUBE B, FUEL	-	1	1	1		
3	16950-ZVB-003	COCK ASSY., FUEL(2WAY)	1	-	-	-		
4	16950-ZVD-003	COCK ASSY., FUEL(3WAY)	-	1	1	1		
5	16952-ZE6-000	STRAINER, FUEL	1	1	1	1		
6	17510-ZVD-000	TANK COMP, FUEL	1	1	1	1		
7	17514-ZVD-000	RUBBER, TANK MOUNTING	2	2	2	2		
8	17515-ZVD-000	RUBBER, TANK CAP	1	1	1	1		
9	17534-ZVD-000	SEAL, FUEL TANK	1	1	1	1		
10	17550-ZVD-000	INSULATOR COMP., FUEL TANK ..	1	1	1	1		
11	17620-ZVD-000	CAP ASSY., FUEL TANK	1	1	1	1		
12	17621-ZVD-000	BODY, FUEL CAP	1	1	1	1		
13	17622-ZVD-000	INNER, FUEL CAP	1	1	1	1		
14	17623-ZV0-000	SPONGE, FUEL CAP BREATHER ...	1	1	1	1		
15	17624-ZVA-000	PACKING, BREATHER VALVE	1	1	1	1		
16	17625-ZVA-000	PACKING, FUEL CAP	1	1	1	1		
17	17626-ZVA-000	VALVE COMP., BREATHER	1	1	1	1		
18	17629-ZVA-000	SPRING, FUEL CAP	1	1	1	1		
19	17633-ZVD-000	TETHER, FUEL CAP	1	1	1	1		
20	17710-ZW9-033	CONNECTOR ASSY., FUEL(B)	-	1	1	1		
21	17713-ZVD-000	GROMMET, FUEL CONNECTOR	1	-	-	-		
22	17936-ZVA-000	WASHER, PLAIN, 6MM	1	1	1	1		
23	30419-ZY9-003	GROMMET, ELECTRONIC PARTS CASE	2	2	2	2		
24	90013-ZV4-010	BOLT, FLANGE, 6X20	2	2	2	2		
25	90020-ZVD-000	BOLT, SPECIAL, 6MM	1	1	1	1		



E-17

FUEL TANK



ZVB3E1700

Ref. No.	Part No.	Description	Reqd. QTY				Serial No.	Parts catalogue code
			BF 4	BF 4.9	BF 5	BF 6		
26	90112-ZY1-000	BOLT, SPECIAL, 6X22(CT200) ..	1	1	1	1		
27	90404-ZVA-000	COLLAR, 6.5X7.5	1	1	1	1		
28	90602-ZVD-000	CLIP, TUBE(B1 11)	-	1	1	1		
29	90701-ZVA-000	PIN, LOCK, 4MM	1	1	1	1		
30	91501-ZVD-300	COLLAR, FUEL TANK INSULATOR ..	1	1	1	1		
31	91553-ZV5-010	COLLAR, C.D.I. UNIT CASE	2	2	2	2		
32	95002-02109	CLIP, TUBE(B1 10)	2	3	3	3		
33	95002-02129	CLIP, TUBE(B1 12)	1	1	1	1		

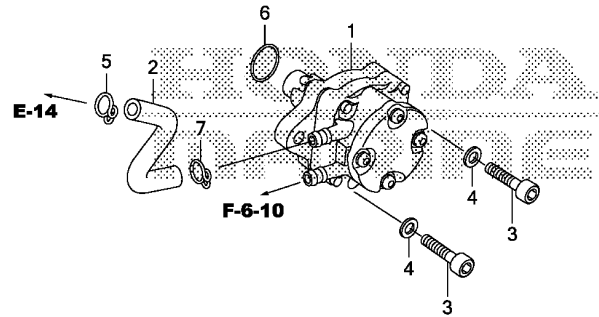
2

E-18

FUEL PUMP



Ref. No.	L.O.N.	(Relative ref. Number) Description	F.R.T.
1		(6)	
1	3101H9	PUMP, FUEL	0.2
2	3101X6	TUBE E, FUEL	0.1



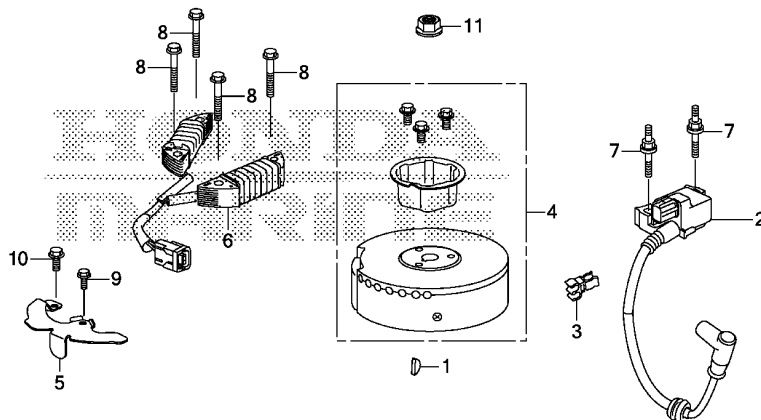
ZVB3E1800

Ref. No.	Part No.	Description	Reqd. QTY				Serial No.	Parts catalogue code
			BF 4	BF 4.9	BF 5	BF 6		
1	16700-ZVD-003	PUMP ASSY., FUEL	1	1	1	1		
2	16795-ZVD-000	TUBE E, FUEL	1	1	1	1		
3	90002-ZVD-000	BOLT, SOCKET, 6X22	2	2	2	2		
4	90402-ZVD-000	WASHER, PLAIN, 6MM	2	2	2	2		
5	90601-ZVD-000	CLIP, TUBE(B1 9)	1	1	1	1		
6	91306-921-000	O-RING, 20.8X2.4	1	1	1	1		
7	95002-02089	CLIP, TUBE(B1 8)	1	1	1	1		



E-19

FLYWHEEL/IGNITION COIL



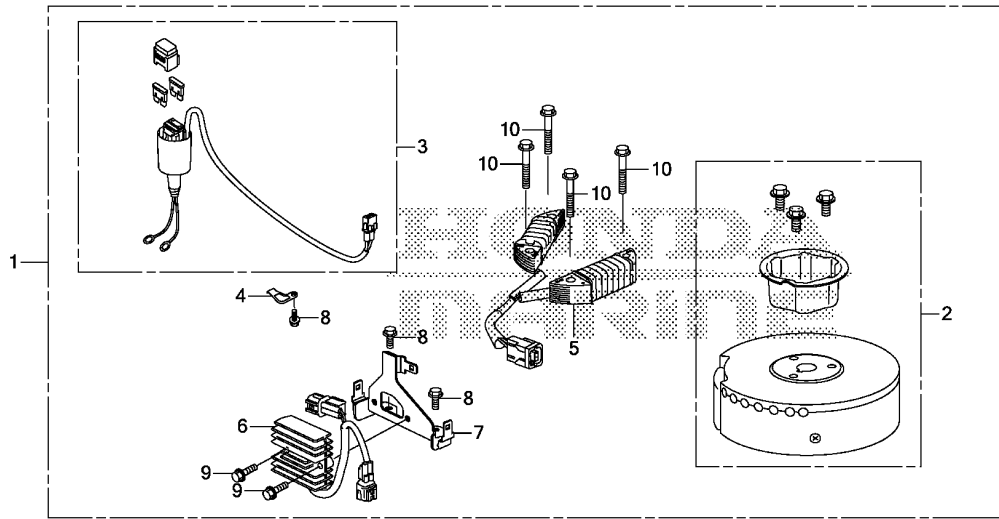
ZVB3E1900

Ref. No.	L.O.N.	(Relative ref. Number) Description	F.R.T.
2	6141A5	COIL, IGNITION(ONE)	0.2
4	2161B5	FLYWHEEL	0.2
6	6131C3	COIL, CHARGE	0.3

Ref. No.	Part No.	Description	Reqd. QTY				Serial No.	Parts catalogue code
			BF 4 AH	BF 4.9 DH	BF 5 DH	BF 6 AH		
1	13331-357-000	KEY, SPECIAL WOODRUFF, 25X18	1	1	1	1		
2	30500-ZVB-003	COIL ASSY., IGNITION	1	-	-	-		
	30500-ZVC-003	-	1	1	-		
	30500-ZVD-003	-	-	-	1		
3	30701-ZVD-003	CLIP, HIGH TENSION CORD	1	1	1	1		
4	31110-ZVD-003ZA	FLYWHEEL COMP.						
		BLACK.....BLACK	1	1	1	1	-----	LHND,LHNN,LHNNK,LHNU,SHND,SHNH,SHNK,SHNU
	31110-ZVD-601ZA	FLYWHEEL COMP.(CHARGE)						
		BLACK.....BLACK	-	-	1	1	-----	LHD,LHU,SHD,SHU
5	31510-ZVD-000	CLAMPER COMP., CORD	1	1	1	1		
6	31630-ZVD-601	COIL ASSY., CHARGE(6A)	-	-	1	1	-----	LHD,LHU,SHD,SHU
7	90001-ZVD-000	BOLT, SPECIAL(6MM)	2	2	2	2		
8	90031-ZY3-000	BOLT, FLANGE, 6X32	-	-	4	4	-----	LHD,LHU,SHD,SHU
9	90058-ZVA-000	BOLT, FLANGE, 5X10	1	1	1	1		
10	90117-ZVA-000	BOLT, FLANGE, 6X12	1	1	1	1		
11	90201-881-000	NUT, SPECIAL, 14MM	1	1	1	1		

EOP-2

CHARGE RECEPTACLE KIT



ZVB3X0200

Ref. No.	L.O.N.	(Relative ref. Number) Description	F.R.T.
2	2161B5	FLYWHEEL	0.2
3	6111L4	HARN ASSY., GENERATOR POWER ..	0.3
5	6131C3	COIL, CHARGE	0.3
6	6131B7	RECTIFIER, REGULATOR	0.3
7	6221R0	BRACKET, REGULATOR	0.3

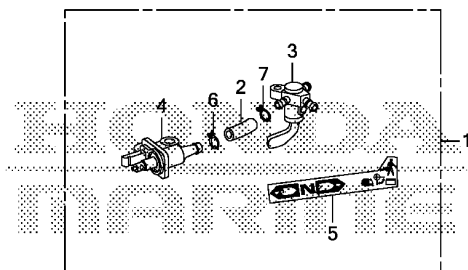
Ref. No.	Part No.	Description	Reqd. QTY				Serial No.	Parts catalogue code
			BF 4	BF 4.9	BF 5	BF 6		
1	06310-ZVD-000ZA	RECEPTACLE KIT, CHARGE *BLACK*.....BLACK	(1)	(1)	(1)	(1)	-----	LHND, LHNH, LHNK, LHNU, SHND, SHNH, SHNK, SHNU
2	31110-ZVD-601ZA	FLYWHEEL COMP. (CHARGE) *BLACK*.....BLACK	(1)	(1)	(1)	(1)	-----	LHND, LHNH, LHNK, LHNU, SHND, SHNH, SHNK, SHNU
3	31575-ZVD-600	HARN ASSY., GENERATOR POWER	(1)	(1)	(1)	(1)	-----	LHND, LHNH, LHNK, LHNU, SHND, SHNH, SHNK, SHNU
4	31580-ZVD-600	BRACKET, BATTERY CABLE	(1)	(1)	(1)	(1)	-----	LHND, LHNH, LHNK, LHNU, SHND, SHNH, SHNK, SHNU
5	31630-ZVD-601	COIL ASSY., CHARGE(6A)	(1)	(1)	(1)	(1)	-----	LHND, LHNH, LHNK, LHNU, SHND, SHNH, SHNK, SHNU
6	31750-ZVD-601	PEG RECT ASSY	(1)	(1)	(1)	(1)	-----	LHND, LHNH, LHNK, LHNU, SHND, SHNH, SHNK, SHNU
7	31751-ZVD-600	BRACKET, REGULATOR	(1)	(1)	(1)	(1)	-----	LHND, LHNH, LHNK, LHNU, SHND, SHNH, SHNK, SHNU
8	90011-ZW9-000	BOLT, FLANGE, 6X14(CT200) ...	(3)	(3)	(3)	(3)	-----	LHND, LHNH, LHNK, LHNU, SHND, SHNH, SHNK, SHNU
9	90018-ZW5-000	BOLT, FLANGE, 6X20	(2)	(2)	(2)	(2)	-----	LHND, LHNH, LHNK, LHNU, SHND, SHNH, SHNK, SHNU
10	90031-ZY3-000	BOLT, FLANGE, 6X32	(4)	(4)	(4)	(4)	-----	LHND, LHNH, LHNK, LHNU, SHND, SHNH, SHNK, SHNU



EOP-3

FUEL CONNECTOR KIT

Ref. No.	L.O.N.	(Relative ref. Number) Description	F.R.T.
2	3101F7	TUBE B, FUEL	0.3
3	3101AD	COCK ASSY., FUEL(3WAY)	0.3
4	3101M9	CONNECTOR, FUEL	0.3



FR.

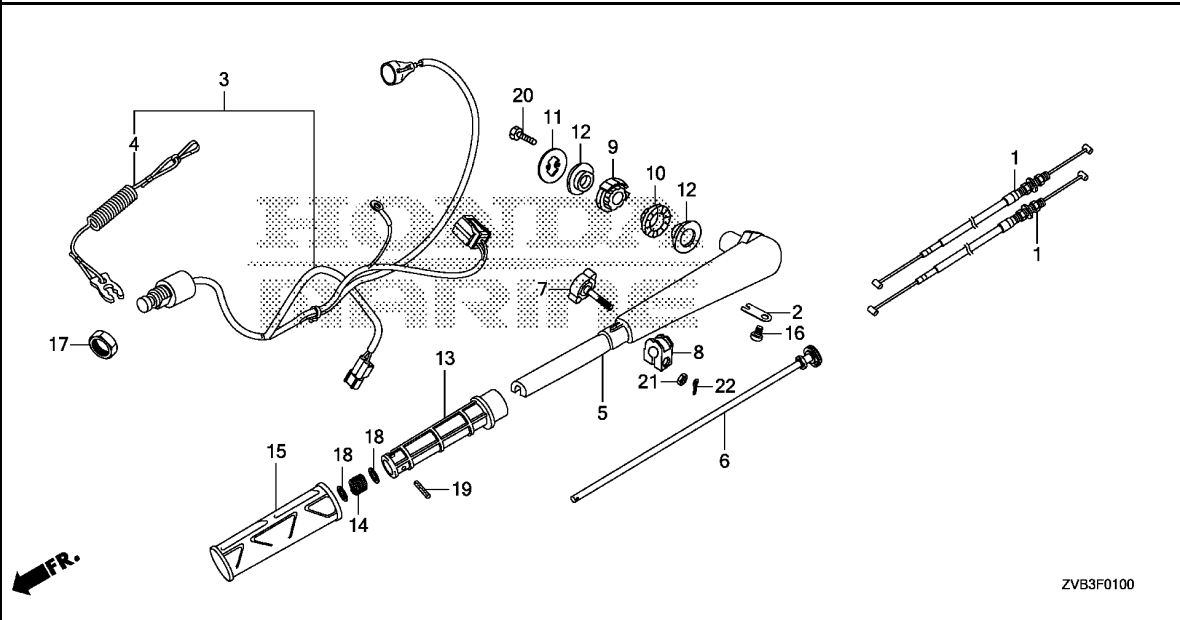
ZVB3X0300

Ref. No.	Part No.	Description	Reqd. QTY				Serial No.	Parts catalogue code
			BF 4 AH	BF 4.9 DH	BF 5 DH	BF 6 AH		
1	06177-ZVB-000	CONNECTOR KIT, FUEL(GENERAL)	(1)	-	-	-		
2	16792-ZVD-000	TUBE B, FUEL	(1)	-	-	-		
3	16950-ZVD-003	COCK ASSY., FUEL(3WAY)	(1)	-	-	-		
4	17710-ZW9-033	CONNECTOR ASSY., FUEL(B)	(1)	-	-	-		
5	87511-ZVD-000	MARK, CHANGE FUEL COCK(EU) ..	(1)	-	-	-		
6	90602-ZVD-000	CLIP, TUBE(B1 11)	(1)	-	-	-		
7	95002-02109	CLIP, TUBE(B1 10)	(1)	-	-	-		

2

F-1

STEERING HANDLE

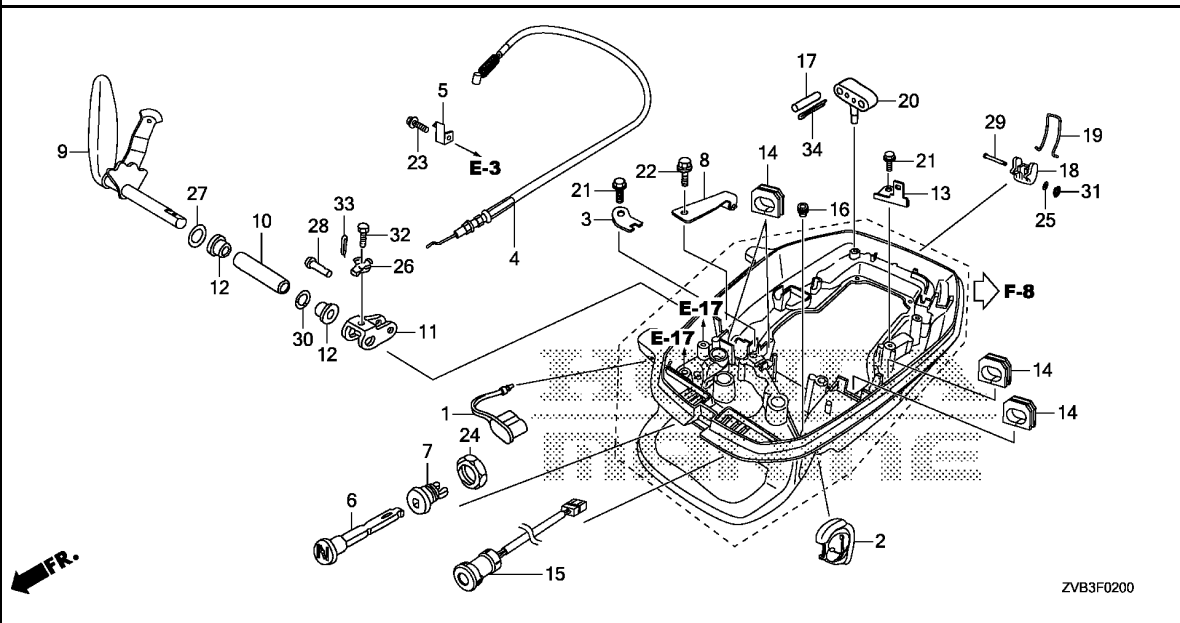


Ref. No.	L.O.N.	(Relative ref. Number) Description	F.R.T.
1	8111C8	CABLE, THROTTLE	0.7
3	6151B8	SWITCH, EMERGENCY STOP	0.3
5	8101E4	HANDLE, STEERING	1.4
.INCLUDES: Engine removal and installation			
6	8101T7	REEL, THROTTLE	0.2
8	8101U0	BLOCK, THROTTLE FRICTION	0.1
9	5101E4	RUBBER, HANDLE MOUNTING	1.0
.INCLUDES: Engine removal and installation			
10	5101E4	RUBBER, HANDLE MOUNTING	1.0
.INCLUDES: Engine removal and installation			
13	8101H8	PIPE, GRIP	0.1

Ref. No.	Part No.	Description	Reqd. QTY				Serial No.	Parts catalogue code
			BF 4	BF 4.9	BF 5	BF 6		
			AH	DH	DH	AH		
1	17910-ZVD-003	CABLE COMP., THROTTLE	2	2	2	2		
2	24626-ZVD-000	PLATE, SHIFT SHAFT	1	1	1	1		
3	36180-ZVD-003	SWITCH ASSY., EMERGENCY STOP	1	1	1	1		
4	36182-ZVD-650	CORD COMP., EMERGENCY	1	1	1	1		
5	53101-ZVD-000ZA	HANDLE, STEERING						
	NHB14M							
	AQUA MARINE SILVER METALLIC		1	1	1	1		
6	53102-ZVD-000	REEL COMP., THROTTLE	1	1	1	1		
7	53104-ZVD-000	BOLT, FRICTION	1	1	1	1		
8	53106-ZVD-000	BLOCK, THROTTLE FRICTION	1	1	1	1		
9	53108-ZVD-000	RUBBER, HANDLE MOUNTING(B) ..	1	1	1	1		
10	53109-ZVD-000	RUBBER, HANDLE MOUNTING(A) ..	1	1	1	1		
11	53111-ZVD-000	PLATE, STEERING HANDLE	1	1	1	1		
12	53112-ZVD-000	COLLAR, STEERING HANDLE	2	2	2	2		
13	53141-ZVD-000	PIPE, GRIP	1	1	1	1		
14	53148-ZVD-000	SPRING, GRIP PIPE	1	1	1	1		
15	53165-ZVD-000	RUBBER, GRIP	1	1	1	1		
16	90119-ZVD-000	SCREW, PAN, 6X8	1	1	1	1		
17	90303-ZVA-000	NUT, HEX., 16MM	1	1	1	1		
18	90543-ZVD-000	WASHER, PLAIN, 10MM	2	2	2	2		
19	90752-ZVD-000	PIN, SPRING, 4X28	1	1	1	1		
20	92101-06016-4J	BOLT, HEX., 6X16	2	2	2	2		
21	94002-06490-0S	NUT, HEX., 6MM	1	1	1	1		
22	94201-20102	PIN, SPLIT, 2	1	1	1	1		

F-2

SHIFT SHAFT/COVER LOCK LEVER



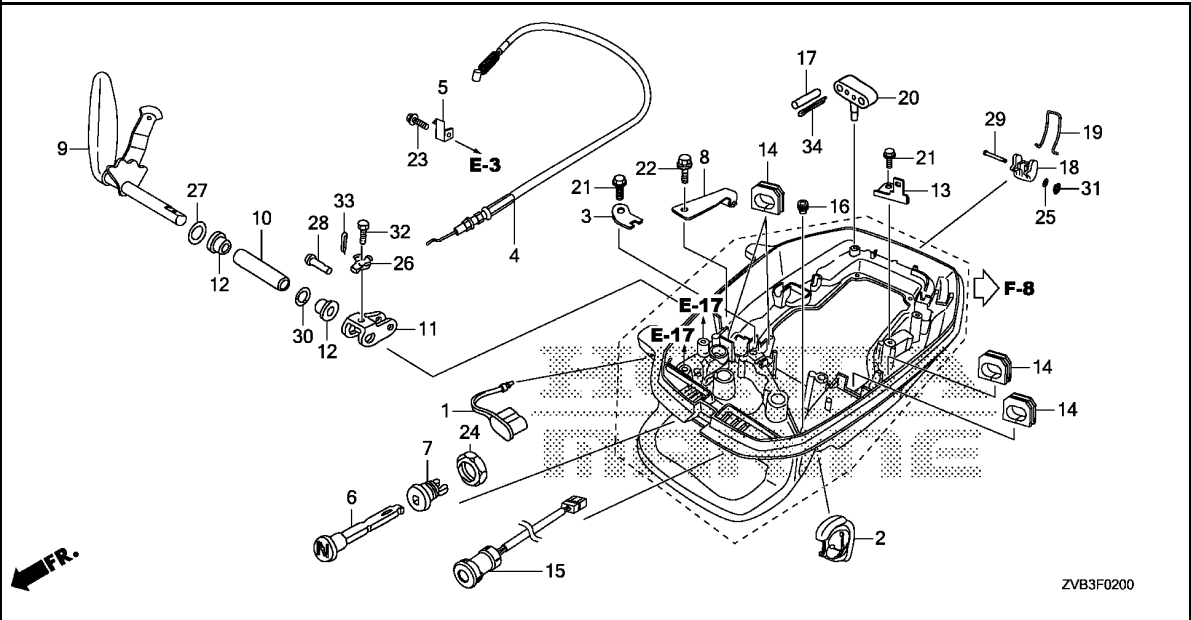
Ref. No.	L.O.N.	(Relative ref. Number) Description	F.R.T.
4	8111C0	CABLE, NEUTRAL STARTING	0.1
6	8101Q0	KNOB, CHOKE	0.3
8	2101Q4	SPRING, CLICK	0.2
9	2091G8	SHAFT, SHIFT	1.1
.INCLUDES: Engine removal and installation			
11	2101A5	ARM, SHAFT SHIFT	1.0
.INCLUDES: Engine removal and installation			
15	616143	LAMP, INDICATION	0.3
18	4141C8	LEVER, FASTENER	0.1

3

Ref. No.	Part No.	Description	Reqd. QTY				Serial No.	Parts catalogue code
			BF 4 AH	BF 4.9 DH	BF 5 DH	BF 6 AH		
1	17714-ZVD-000	CAP, FUEL CONNECTOR	-	1	1	1		
2	17913-ZVD-000	GROMMET, THROTTLE CABLE	1	1	1	1		
3	17921-ZVD-000	HOLDER, CABLE	1	1	1	1		
4	17940-ZVD-003	CABLE COMP., NEUTRAL STARTING	1	1	1	1		
5	17945-ZVD-000	BRACKET, CABLE	1	1	1	1		
6	17951-ZVD-000	KNOB, CHOKE	1	1	1	1		
7	17953-ZVD-000	GUIDE, CHOKE KNOB	1	1	1	1		
8	24210-ZV1-010	SPRING COMP., CLICK	1	1	1	1		
9	24610-ZVD-000	SHAFT COMP., SHIFT	1	1	1	1		
10	24611-ZVD-000	COLLAR, SHIFT SHAFT	1	1	1	1		
11	24612-ZVD-000	ARM COMP., SHIFT	1	1	1	1		
12	24621-ZVD-000	BUSH, SHAFT	2	2	2	2		
13	32101-ZVD-000	BRACKET, COUPLER A	1	1	1	1	-----	LHND, LHNH, LHNK, LHNU, SHND, SHNH, SHNK, SHNU
14	32972-ZVD-000	GROMMET, CORD	4	4	4	4		
15	37210-ZVD-003	LAMP ASSY., INDICATOR	1	1	1	1		
16	40102-ZVD-000	GROMMET A, UNDER CASE	1	1	1	1	-----	LHND, LHNH, LHNK, LHNU, SHND, SHNH, SHNK, SHNU
	40102-ZVD-600	-	-	1	1	-----	LHD, LHU, SHD, SHU
17	58131-ZV1-010	PIN, SHEAR	1	1	1	1		
18	63232-ZVD-000	LEVER, FASTENER	1	1	1	1		
19	63236-ZVD-000	WIRE, FASTENER(3.2)	1	1	1	1		
20	88111-ZVA-000	HOLDER, PARTS	1	1	1	1		
21	90011-ZW9-000	BOLT, FLANGE, 6X14(CT200) ...	2	2	-	-	-----	LHND, LHNH, LHNU, SHND, SHNH, SHNU
			-	-	2	2	-----	LHD, LHU, SHD, SHU
			-	-	1	1	-----	LHND, LHNH, LHNU, SHND, SHNH, SHNU
			-	-	1	1	-----	LHD, LHU, SHD, SHU
22	90013-ZV0-010	BOLT, FLANGE, 6X12	1	1	1	1		

F-2

SHIFT SHAFT/COVER LOCK LEVER

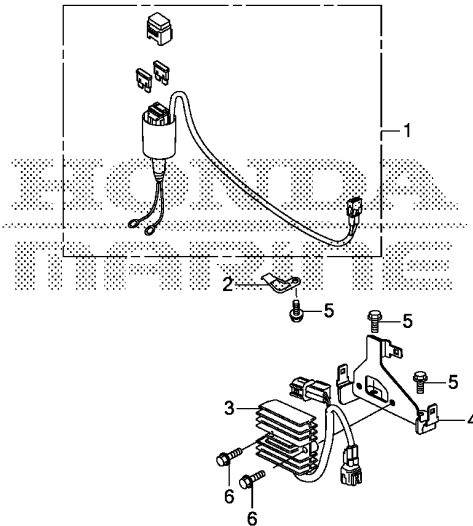


Ref. No.	Part No.	Description	Reqd. QTY				Serial No.	Parts catalogue code
			BF 4	BF 4.9	BF 5	BF 6		
			AH	DH	DH	AH		
23	90112-ZVA-000	BOLT, FLANGE, 6X12	1	1	1	1		
24	90303-ZVA-000	NUT, HEX., 16MM	1	1	1	1		
25	90452-GK4-600	WASHER, PLAIN, 5MM	1	1	1	1		
26	90501-ZVD-000	WASHER, TONGUED	1	1	1	1		
27	90508-ZVD-000	WASHER, PLAIN, 10MM	1	1	1	1		
28	90754-ZVD-000	PIN, HEX., 5X15	1	1	1	1		
29	90755-ZVD-000	PIN, 5X47	1	1	1	1		
30	91352-526-000	O-RING, 9.8X2.4	1	1	1	1		
31	91452-ZVD-000	RING, STOPPER	1	1	1	1		
32	92101-05016-4J	BOLT, HEX., 5X16	1	1	1	1		
33	94201-16102	PIN, SPLIT, 1.6	1	1	1	1		
34	94201-30252	PIN, SPLIT, 3.0	1	1	1	1		

F-2-20

REGULATOR RECTIFIER

FR.



ZVB3F0220

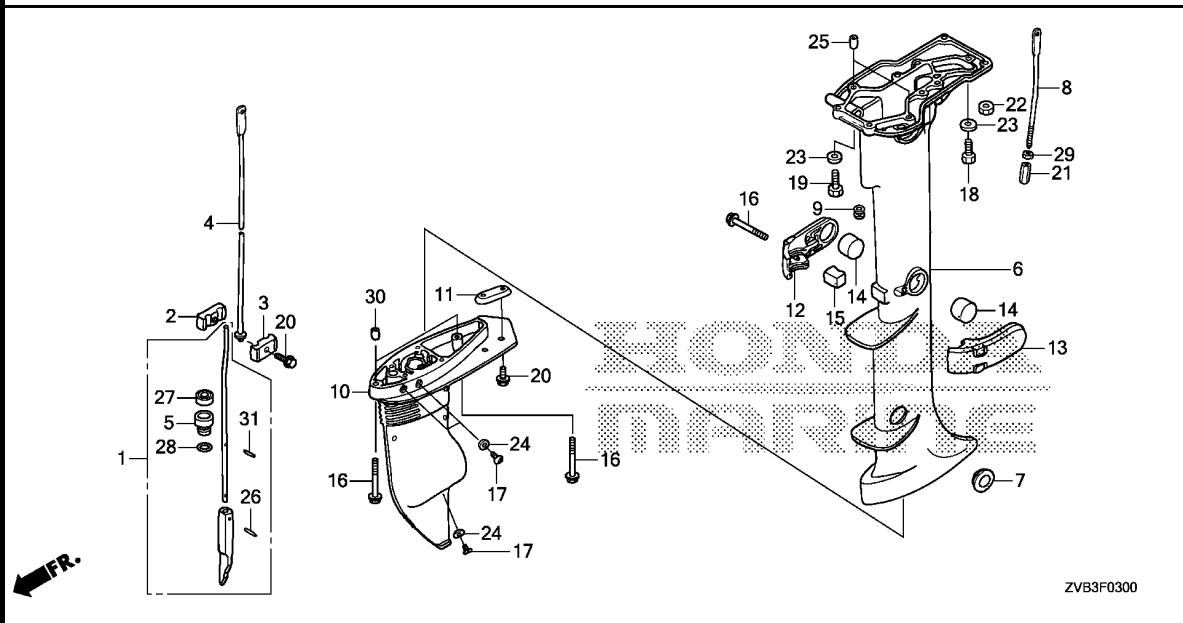
Ref. No.	L.O.N.	(Relative ref. Number) Description	F.R.T.
1	6111L4	HARN ASSY., GENERATOR POWER ..	0.3
3	6131B7	RECTIFIER, REGULATOR	0.3
4	6221R0	BRACKET, REGULATOR	0.3

3

Ref. No.	Part No.	Description	Reqd. QTY				Serial No.	Parts catalogue code
			BF 4	BF 4.9	BF 5	BF 6		
			AH	DH	DH	AH		
1	31575-ZVD-600	HARN ASSY., GENERATOR POWER .	-	-	1	1	-----	LHD,LHU,SHD,SHU
2	31580-ZVD-600	BRACKET, BATTERY CABLE	-	-	1	1	-----	LHD,LHU,SHD,SHU
3	31750-ZVD-601	PEG RECT ASSY	-	-	1	1	-----	LHD,LHU,SHD,SHU
4	31751-ZVD-600	BRACKET, REGULATOR	-	-	1	1	-----	LHD,LHU,SHD,SHU
5	90011-ZW9-000	BOLT, FLANGE, 6X14(CT200) ...	-	-	3	3	-----	LHD,LHU,SHD,SHU
6	90018-ZW5-000	BOLT, FLANGE, 6X20	-	-	2	2	-----	LHD,LHU,SHD,SHU

F-3

EXTENSION CASE/GEAR CASE



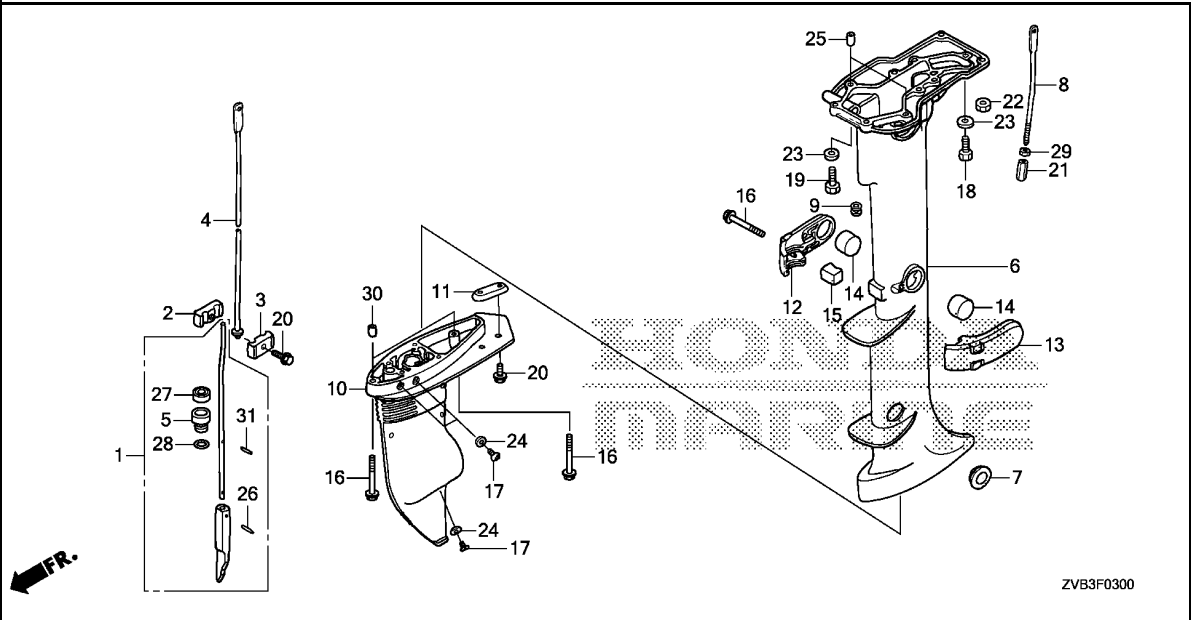
Ref. No.	L.O.N.	(Relative ref. Number) Description	F.R.T.
1	2101P8	ROD B, SHIFT	0.2
4	2101P7	ROD A, SHIFT	1.0
		.INCLUDES: Engine removal and installation	
6	2191B2	CASE, EXTENSION	1.1
		.INCLUDES: Engine removal and installation	
8	2091J6	SHAFT, REVERSE LOCK	1.0
		.INCLUDES: Engine removal and installation	
10	2101D7	CASE, GEAR	0.4
11	2101V1	METAL, GEAR CASE ANODE	0.2
12	4141S1	HOUSING, LOWER MOUNTING :RIGHT	0.1
13	4141S0	HOUSING, LOWER MOUNTING :LEFT	0.1
14	4101BA	RUBBER A, LOWER MOUNTING	0.1
15	4101BB	RUBBER B, LOWER MOUNTING	0.1

Ref. No.	Part No.	Description	Reqd. QTY				Serial No.	Parts catalogue code
			BF 4 AH	BF 4.9 DH	BF 5 DH	BF 6 AH		
1	24310-ZVD-000	ROD COMP. B, SHIFT	1	1	1	1		
2	24312-ZV1-003	JOINT, R. SHIFT ROD	1	1	1	1		
3	24313-ZV1-003	JOINT, L. SHIFT ROD	1	1	1	1		
4	24320-ZVD-700	ROD A, SHIFT(L)	1	1	1	1	----- LHD,LHND,LHND,LHND,LHNU,LHU	
	24320-ZVD-000	ROD A, SHIFT(S)	1	1	1	1	----- SHD,SHND,SHNH,SHNK,SHNU,SHU	
5	24343-ZVD-000	HOLDER, SEAL	1	1	1	1		
6	40201-ZVD-700ZA	CASE, EXTENSION(L) *NHB14M*						
		AQUA MARINE SILVER METALLIC	1	1	1	1	----- LHD,LHND,LHND,LHND,LHNU,LHU	
	40201-ZVD-000ZA	CASE, EXTENSION(S) *NHB14M*						
		AQUA MARINE SILVER METALLIC	1	1	1	1	----- SHD,SHND,SHNH,SHNK,SHNU,SHU	
7	40202-ZVD-000	GROMMET, EXTENSION	1	1	1	1		
8	40204-ZVD-000	SHAFT, REVERSE LOCK	1	1	1	1		
9	40205-ZVD-000	GROMMET, LOCK SHAFT	1	1	1	1		
10	41100-ZV1-C00ZB	CASE COMP., GEAR *NHB14M*						
		AQUA MARINE SILVER METALLIC	1	1	1	1		
11	41106-ZV4-650	METAL, ANODE	1	1	1	1		
12	50111-ZVD-000ZA	HOUSING, R. LOWER MOUNTING *NHB14M*						
		AQUA MARINE SILVER METALLIC	1	1	1	1		
13	50121-ZVD-000ZA	HOUSING, L. LOWER MOUNTING *NHB14M*						
		AQUA MARINE SILVER METALLIC	1	1	1	1		
14	50152-ZVD-000	RUBBER A, LOWER MOUNTING	2	2	2	2		
15	50155-ZVD-000	RUBBER B, LOWER MOUNTING	1	1	1	1		



F-3

EXTENSION CASE/GEAR CASE

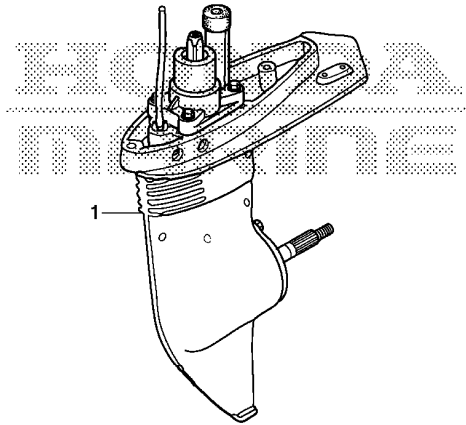


Ref. No.	Part No.	Description	Reqd. QTY				Serial No.	Parts catalogue code
			BF 4	BF 4.9	BF 5	BF 6		
			AH	DH	DH	AH		
16	90102-ZVD-000	BOLT-WASHER, 6X50	4	4	4	4		
17	90105-ZVA-000	BOLT, OIL CHECK	3	3	3	3		
18	90111-881-000	BOLT, HEX., 6X32	7	7	7	7		
19	90114-881-000	BOLT, HEX., 6X40	2	2	2	2		
20	90215-HW1-671	BOLT, FLANGE, 6X16	3	3	3	3		
21	90301-ZVD-000	NUT, REVERSE LOCK	1	1	1	1		
22	90304-ZV4-000	NUT, HEX., 6MM	4	4	4	4		
23	90506-ZVD-000	WASHER, PLAIN, 6MM	9	9	9	9		
24	90507-ZVA-000	WASHER, NYLON, 8MM	3	3	3	3		
25	90751-ZVD-000	DOWEL PIN, 8X16	2	2	2	2		
26	91151-VD6-851	ROLLER, 2.5X11.8	1	1	1	1		
27	91253-ZW9-003	SEAL, WATER, 6MM	1	1	1	1		
28	91303-ZV1-003	O-RING(10.8X2.5)	1	1	1	1		
29	94001-05490-0S	NUT, HEX., 5MM	1	1	1	1		
30	94301-08140	DOWEL PIN, 8X14	2	2	2	2		
31	94305-25102	PIN, SPRING, 2.5X10	1	1	1	1		

3

F-3-10

GEAR CASE ASSY



FR.

ZVB3F0310

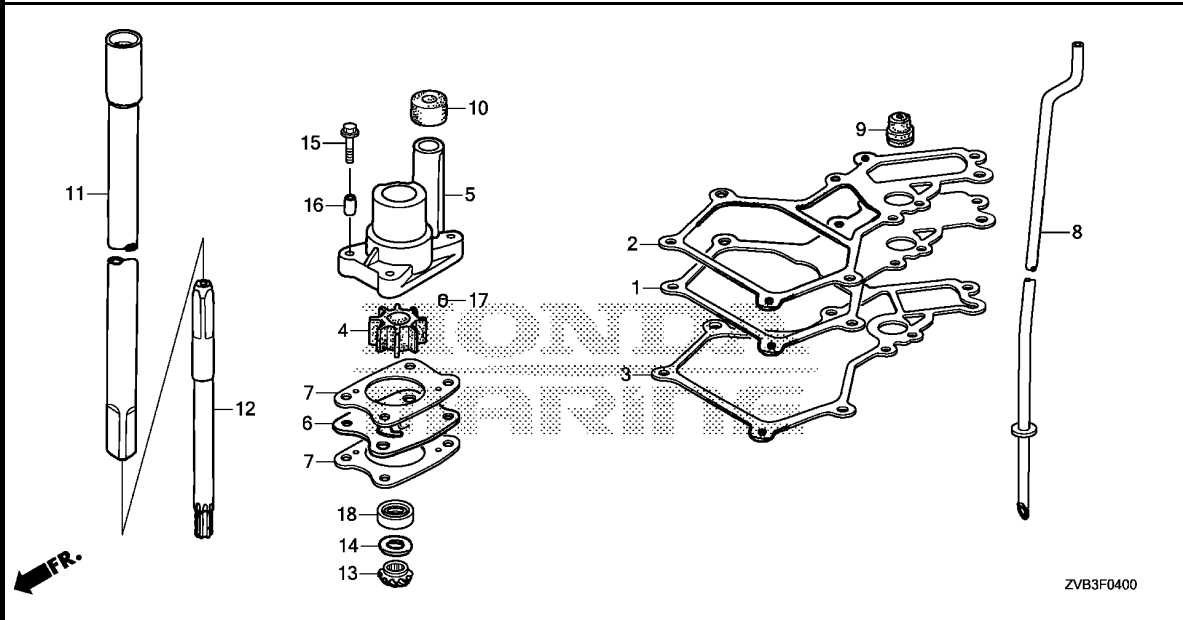
Ref. No.	L.O.N.	(Relative ref. Number) Description	F.R.T.
1	2101D3	CASE ASSEMBLY, GEAR	0.2

Ref. No.	Part No.	Description	Reqd. QTY				Serial No.	Parts catalogue code
			BF 4	BF 4.9	BF 5	BF 6		
1	41005-ZVD-000ZA	CASE ASSY., GEAR *NHB14M* AQUA MARINE SILVER METALLIC	1	1	1	1		

3

F-4

VERTICAL SHAFT



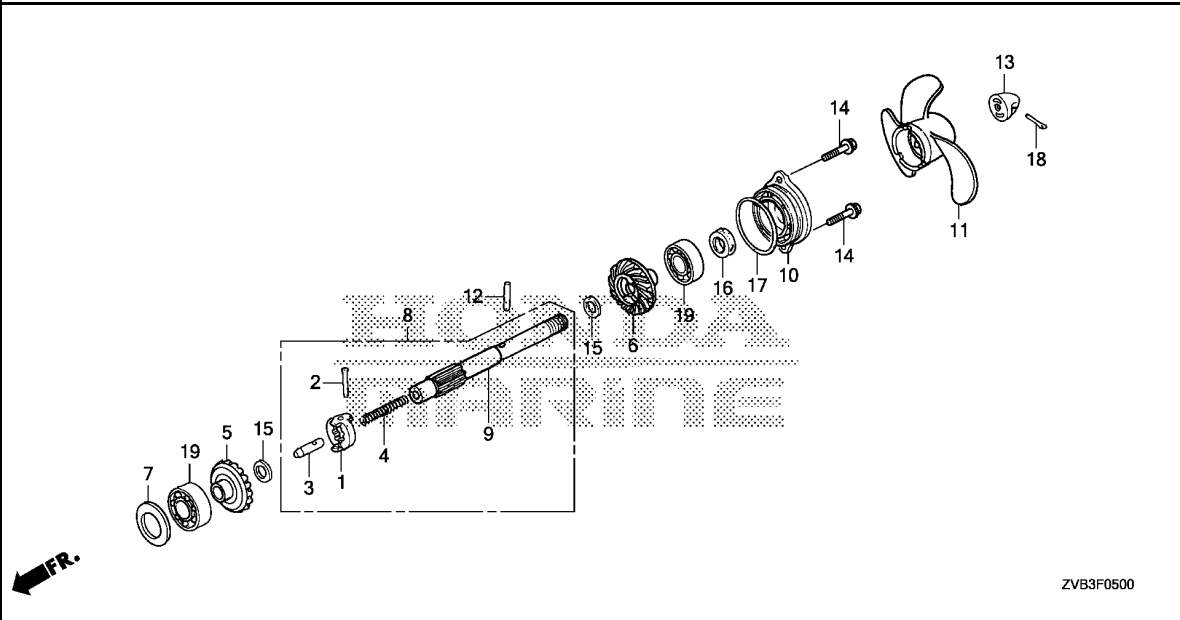
Ref. No.	L.O.N.	(Relative ref. Number) Description	F.R.T.
1	3131M5	PLATE, EXHAUST CHAMBERINCLUDES: Engine removal and installation	0.9
2	3131M3	GASKET, EXHAUST CHAMBER :UPPER .INCLUDES: Engine removal and installation	0.9
3	3131M4	GASKET, EXHAUST CHAMBER :LOWER .INCLUDES: Engine removal and installation	0.9
4	1141B9	IMPELLER, PUMP	0.2
5	1141B6	HOUSING, IMPELLER	0.2
7	1141A9	GASKET, IMPELLER	0.2
8	1141H8	TUBE, PUMP WATER	0.9
		.INCLUDES: Engine removal and installation	
10	1141F3	RING, WATER TUBE SEAL	0.2
11	2191A9	SHAFT, VERTICAL	0.2
12	2191C3	SHAFT, WATER PUMP PINION	0.2
13	2091B5	GEAR, VERTICAL SHAFT PINION ..	0.2
18	2191B1	WATER SEAL, VERTICAL SHAFT ...	0.3

3

Ref. No.	Part No.	Description	Reqd. QTY				Serial No.	Parts catalogue code
			BF 4	BF 4.9	BF 5	BF 6		
1	12515-ZVD-000	PLATE, EX. CHAMBER	1	1	1	1		
2	12516-ZVD-000	GASKET, UPPER EX. CHAMBER ...	1	1	1	1		
3	12517-ZVD-000	GASKET, LOWER EX. CHAMBER ...	1	1	1	1		
4	19210-ZVD-003	IMPELLER, PUMP	1	1	1	1		
5	19220-ZVD-000	HOUSING COMP., IMPELLER	1	1	1	1		
6	19231-ZVD-000	COVER, IMPELLER	1	1	1	1		
7	19232-ZV1-A10	GASKET, IMPELLER	2	2	2	2		
8	19251-ZVD-700	TUBE, WATER(L)	1	1	1	1	-----	LHD, LHND, LHNH, LHNK, LHNU, LHU
	19251-ZVD-000	TUBE, WATER(S)	1	1	1	1	-----	SHD, SHND, SHNH, SHNK, SHNU, SHU
9	19252-ZVD-000	GROMMET, WATER TUBE	1	1	1	1		
10	19253-ZVD-000	RING, WATER TUBE SEAL	1	1	1	1		
11	41110-ZV1-701	SHAFT COMP., VERTICAL(L)	1	1	1	1	-----	LHD, LHND, LHNH, LHNK, LHNU, LHU
	41110-ZV1-010	SHAFT COMP., VERTICAL(S)	1	1	1	1	-----	SHD, SHND, SHNH, SHNK, SHNU, SHU
12	41121-ZVD-000	SHAFT, PINION	1	1	1	1		
13	41131-ZVD-000	GEAR, PINION	1	1	1	1		
14	41135-ZVD-000	WASHER A	1	1	1	1		
	41136-ZVD-000	WASHER B	1	1	1	1		
15	90059-ZY3-000	BOLT-WASHER, 6X29	4	4	4	4		
16	90112-ZVD-000	COLLAR B, DISTANCE	4	4	4	4		
17	91101-ZV5-003	ROLLER, 4X10	2	2	2	2		
18	91252-ZV1-003	SEAL, WATER, 13MM(ARAI)	1	1	1	1		

F-5

PROPELLER SHAFT/PROPELLER



Ref. No.	L.O.N.	(Relative ref. Number) Description	F.R.T.
1	2191B3	SHIFTER, CLUTCH	0.3
5	2091A6	GEAR, PROPELLER SHAFT BEVEL :FRONT	0.3
6	2091A7	GEAR, PROPELLER SHAFT BEVEL :REAR	0.2
8	2131Q5	SHAFT ASSEMBLY, PROPELLER	0.2
9	2131K1	SHAFT, PROPELLER	0.3
10		(17)	
	2191A6	HOLDER, PROPELLER SHAFT	0.2
11	2191A8	PROPELLER, THREE BLADES	0.1
16	2131P3	WATER SEAL, PROPELLER SHAFT ..	0.2
19	2191A0	BEARING, PROPELLER SHAFT :FRONT	0.3
	2191B8	BEARING, PROPELLER SHAFT :REAR	0.2

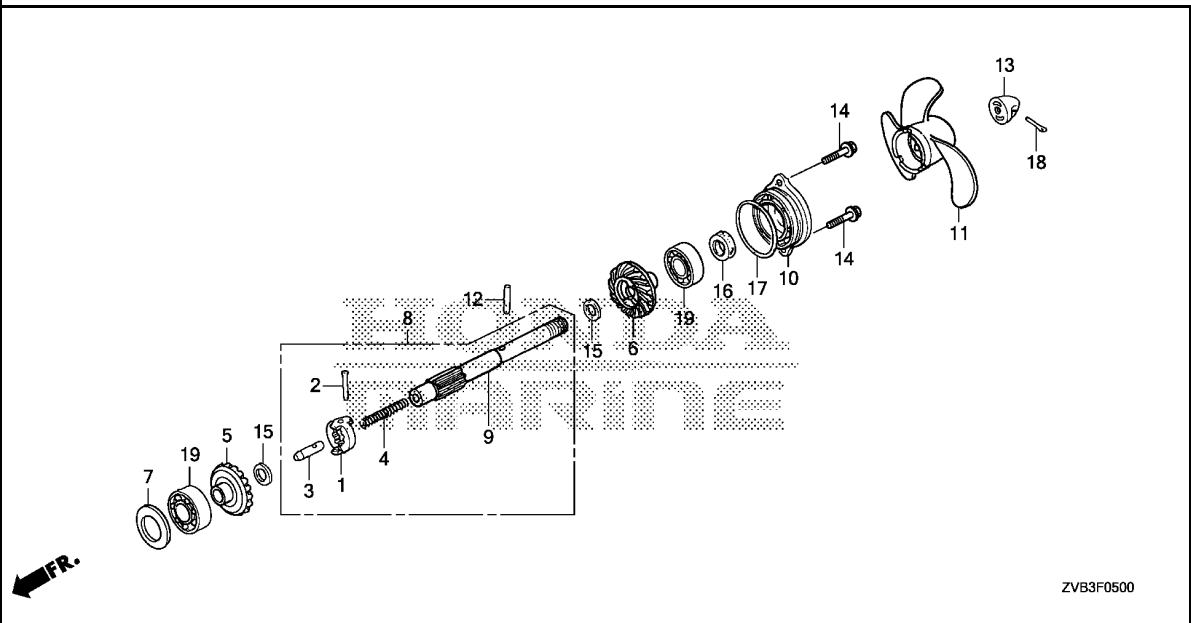
ZVB3F0500

Ref. No.	Part No.	Description	Reqd. QTY				Serial No.	Parts catalogue code
			BF 4 AH	BF 4.9 DH	BF 5 DH	BF 6 AH		
1	24101-ZVD-300	SHIFTER, CLUTCH	1	1	1	1		
2	24102-ZV1-300	PIN, SHIFTER, 3X26	1	1	1	1		
3	24122-ZVD-300	SLIDER, SHIFT	1	1	1	1		
4	24123-ZVD-300	SPRING, SHIFT	1	1	1	1		
5	41145-ZVD-000	GEAR COMP., BEVEL(F)	1	1	1	1		
6	41150-ZVD-000	GEAR COMP., BEVEL(R)	1	1	1	1		
7	41158-ZV1-000	SHIM B, GEAR(0.10MM)	1	1	1	1		
8	41160-ZVD-000	SHAFT COMP., PROPELLER	1	1	1	1		
9	41161-ZVD-300	SHAFT, PROPELLER	1	1	1	1		
10	41201-ZVD-000ZA	HOLDER, PROPELLER SHAFT *NHB14M* AQUA MARINE SILVER METALLIC	1	1	1	1		
11	58130-ZVD-701ZA	PROPELLER COMP., THREE BLADES (7-7/8X5-7/8) *NH283*.....STIN GRAY	(1)	(1)	(1)	(1)		
	58130-ZVD-801ZA	PROPELLER COMP., THREE BLADES (7-7/8X8-1/4) *NH283*.....STIN GRAY	(1)	(1)	(1)	(1)		
	58130-ZVD-U01ZA	PROPELLER COMP., THREE BLADES (7-1/4X5-1/2) *NH283*.....STIN GRAY	(1)	(1)	(1)	(1)		
	58130-ZVD-003ZA	PROPELLER COMP., THREE BLADES (7-7/8X7-1/2) *NH283*.....STIN GRAY	(1)	(1)	(1)	(1)		
	58130-ZVD-601ZA	PROPELLER COMP., THREE BLADES (7-7/8X6-3/4) *NH283*.....STIN GRAY	1	1	1	1	----- LHD,LHND,LHNN,LHNNK,SHD,SHND,SHNH,SHNK	
			(1)	(1)	(1)	(1)	----- LHD,LHND,LHNN,LHNNK,SHD,SHND,SHNH,SHNK	



F-5

PROPELLER SHAFT/PROPELLER



ZVB3F0500

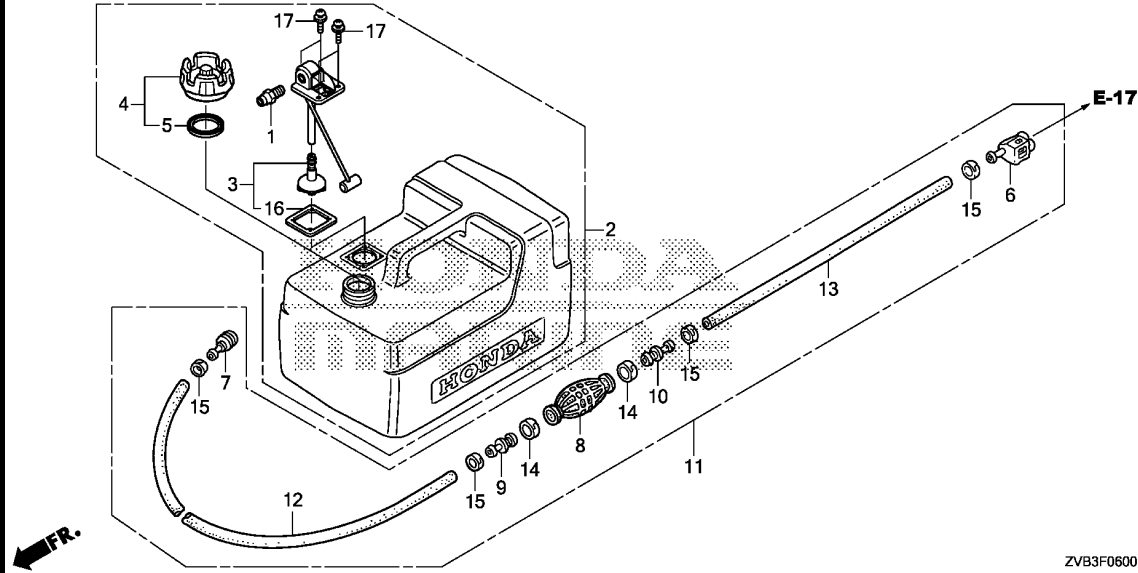
Ref. No.	Part No.	Description	Reqd. QTY				Serial No.	Parts catalogue code
			BF 4	BF 4.9	BF 5	BF 6		

11)	58130-ZVD-003ZA	PROPELLER COMP., THREE BLADES (7-7/8X7-1/2)						
		NH283.....STIN GRAY	(1)	-	(1)	(1)	-----	LHNU,LHU,SHNU,SHU
	58130-ZVD-601ZA	PROPELLER COMP., THREE BLADES (7-7/8X6-3/4)						
		NH283.....STIN GRAY	1	-	1	1	-----	LHNU,LHU,SHNU,SHU
12	58131-ZV1-010	PIN, SHEAR	1	1	1	1		
13	58141-ZVD-000	CAP, PROPELLER	1	1	1	1		
14	90215-HW1-671	BOLT, FLANGE, 6X16	2	2	2	2		
15	90503-ZV1-000	WASHER, 13MM	2	2	2	2		
16	91252-ZV1-003	SEAL, WATER, 13MM(ARAI)	1	1	1	1		
17	91351-ZV1-003	O-RING(52MM)	1	1	1	1		
18	94201-30252	PIN, SPLIT, 3.0	1	1	1	1		
19	96100-60040-00	BEARING, RADIAL BALL, 6004	2	2	2	2		

3

F-6

FUEL TANK



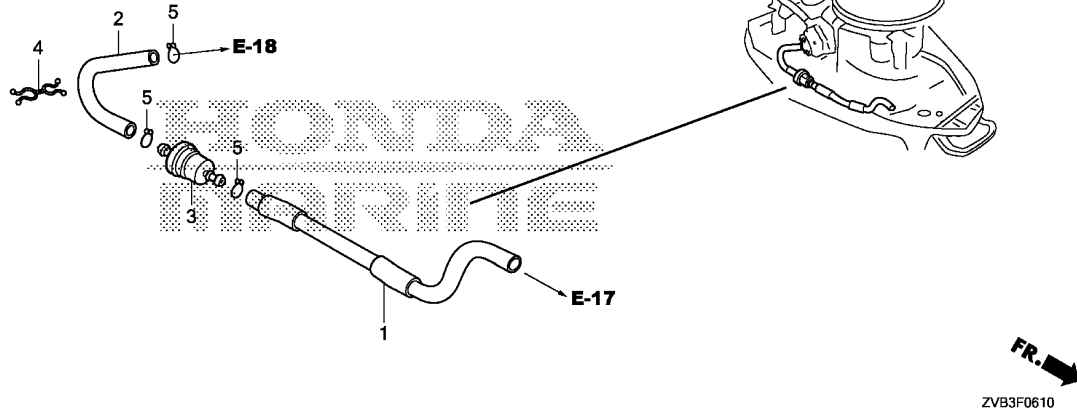
Ref. No.	L.O.N.	(Relative ref. Number) Description	F.R.T.
----------	--------	------------------------------------	--------

NO INFORMATION

Ref. No.	Part No.	Description	Reqd. QTY				Serial No.	Parts catalogue code
			BF 4 AH	BF 4.9 DH	BF 5 DH	BF 6 AH		
1	16977-ZV5-A00	FITTING, QUICK DISCONNECT ...	-	1	1	1		
2	17500-ZV4-A26	TANK ASSY., FUEL	-	1	1	1	----- LHD,LHND,LHNN,LHNK,SHD,SHND,SHNH,SHNK	
	17500-ZV4-G01	-	-	1	1	----- LHNU,LHU,SHNU,SHU	
3	17580-ZZ5-003	FILTER KIT, FUEL	-	1	1	1		
4	17620-ZV4-003	CAP COMP., FUEL FILLER	-	1	1	1		
5	17624-ZV5-902	PACKING, FUEL CAP	-	1	1	1		
6	17650-ZW9-023	CONNECTOR ASSY., FUEL(A)	-	1	1	1		
7	17660-ZW9-003	CONNECTOR COMP., FUEL	-	1	1	1		
8	17661-921-010	BULB, PRIMER	-	1	1	1		
9	17665-ZV5-000	VALVE COMP., IN.	-	1	1	1		
10	17680-ZV4-000	VALVE COMP., OUTLET	-	1	1	1		
11	17700-ZW9-030	TUBE ASSY., FUEL	-	1	1	1		
12	17701-ZV5-000	TUBE, FUEL LONG(7.3X2000) ...	-	1	1	1		
13	17702-ZV4-000	TUBE, FUEL SHORT(6.3X500) ...	-	1	1	1		
14	17703-921-010	BAND, TUBE CLIP, 20MM	-	2	2	2		
15	17704-ZV4-010	BAND, TUBE CLIP, 12.5MM	-	4	4	4		
16	17742-ZZ5-003	PACKING, FUEL PICK UP	-	1	1	1		
17	17743-ZZ5-003	BOLT-WASHER, 5MM(SEAL)	-	4	4	4		

F-6-10

FUEL STRAINER



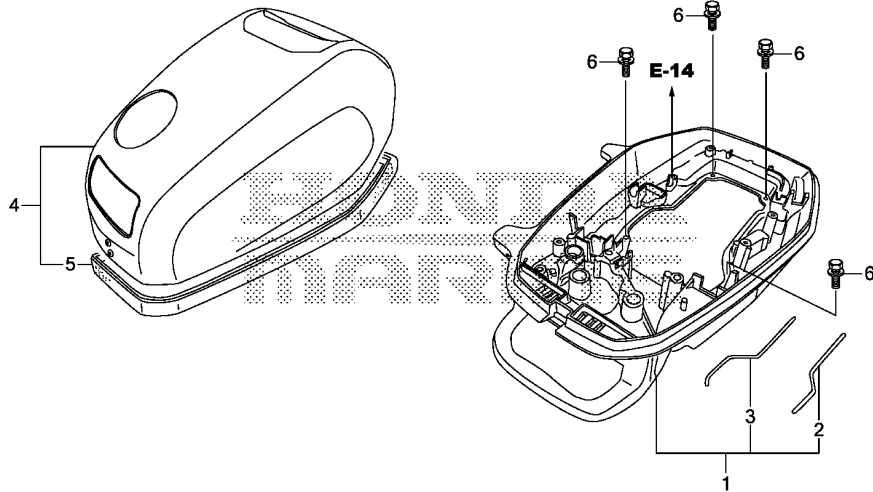
Ref. No.	L.O.N.	(Relative ref. Number) Description	F.R.T.
1	3101L1	TUBE C, FUEL	0.2
2	3101L2	TUBE D, FUEL	0.1
3	3101H3	STRAINER, FUEL PUMP	0.1

3

Ref. No.	Part No.	Description	Reqd. QTY				Serial No.	Parts catalogue code
			BF 4	BF 4.9	BF 5	BF 6		
1	16793-ZVD-000	TUBE COMP. C, FUEL	1	1	1	1		
2	16794-ZVD-000	TUBE D, FUEL	1	1	1	1		
3	16910-GAH-690	STRAINER COMP., FUEL	1	1	1	1		
4	90658-SAO-003	CLIP, WIRE HARNESS	1	1	1	1		
5	95002-02109	CLIP, TUBE(B1 10)	3	3	3	3		

F-8

ENGINE COVER



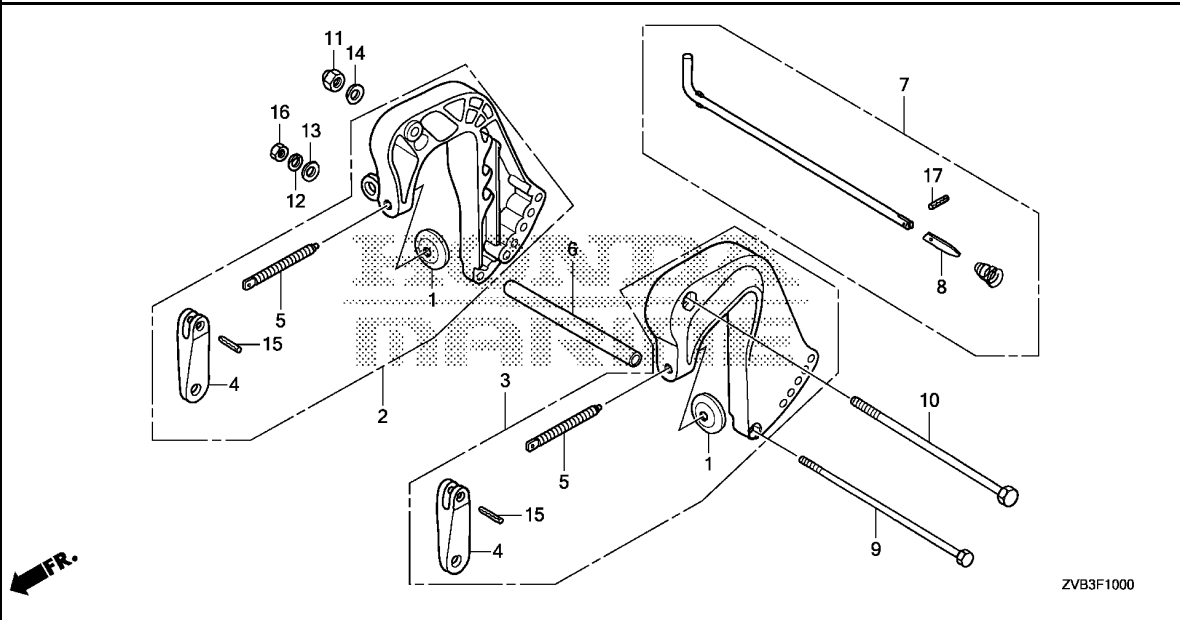
ZVB3F0800

Ref. No.	L.O.N.	(Relative ref. Number) Description	F.R.T.
1	4141L2	CASE, ENGINE UNDERINCLUDES: Engine removal and installation	1.0
4	4141B4	COVER, ENGINE	0.1
5	4131H7	SEAL, ENGINE COVER	0.1

Ref. No.	Part No.	Description	Reqd. QTY				Serial No.	Parts catalogue code
			BF 4	BF 4.9	BF 5	BF 6		
1	40100-ZVD-000ZA	CASE COMP., ENGINE UNDER *NHB14M*						
		AQUA MARINE SILVER METALLIC	1	1	1	1		
2	40111-ZVD-300	SEAL A, UNDER CASE	1	1	1	1		
3	40113-ZVD-300	SEAL C, UNDER CASE	1	1	1	1		
4	63100-ZVD-000ZA	COVER COMP., ENGINE *NHB14M*						
		AQUA MARINE SILVER METALLIC	1	1	1	1		
5	63102-ZVD-300	SEAL, ENGINE COVER	1	1	1	1		
6	90104-ZVD-000	BOLT-WASHER, 6X16	4	4	4	4		

F-10

STERN BRACKET



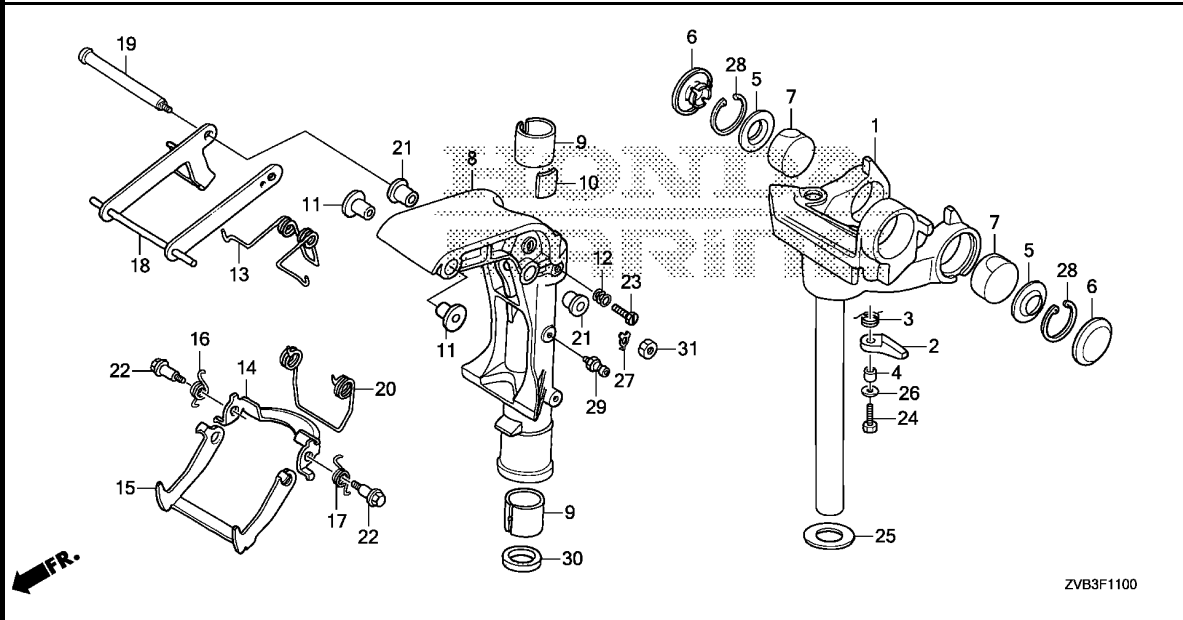
Ref. No.	L.O.N.	(Relative ref. Number) Description	F.R.T.
2	413129	BRACKET, STERN :RIGHT	0.2
3	413128	BRACKET, STERN :LEFT	0.2
7	413169	ROD, ADJUSTING	0.1

3

Ref. No.	Part No.	Description	Reqd. QTY				Serial No.	Parts catalogue code
			BF 4	BF 4.9	BF 5	BF 6		
1	50122-ZVD-300	PLATE, PUSH	2	2	2	2		
2	50300-ZVD-000ZA	BRACKET COMP., R. STERN *NHB14M* AQUA MARINE SILVER METALLIC	1	1	1	1		
3	50310-ZVD-000ZA	BRACKET COMP., L. STERN *NHB14M* AQUA MARINE SILVER METALLIC	1	1	1	1		
4	50323-ZVD-300	GRIP, CLAMP	2	2	2	2		
5	50325-ZVD-300	SCREW, CLAMP	2	2	2	2		
6	50335-ZVD-000	COLLAR, DISTANCE, 6MM	1	1	1	1		
7	50340-ZVD-000	ROD COMP., ADJUSTING	1	1	1	1		
8	50342-ZV1-310	STOPPER, ROD	1	1	1	1		
9	90103-ZVD-000	BOLT, HEX., 6X140	1	1	1	1		
10	90107-ZVD-000	BOLT, HEX., 8X130	1	1	1	1		
11	90305-ZV4-000	NUT, SELF-LOCK, 8MM	1	1	1	1		
12	90503-ZVD-000	WASHER, SPRING, 6MM	1	1	1	1		
13	90506-ZVD-000	WASHER, PLAIN, 6MM	1	1	1	1		
14	90514-ZVD-000	WASHER, PLAIN, 8MM	1	1	1	1		
15	90855-ZVD-300	RIVET, 4X22.6	2	2	2	2		
16	94001-06490-0S	NUT, HEX., 6MM	1	1	1	1		
17	94305-20063	PIN, SPRING, 2X6	1	1	1	1		

F-11

SWIVEL CASE/MOUNT FRAME

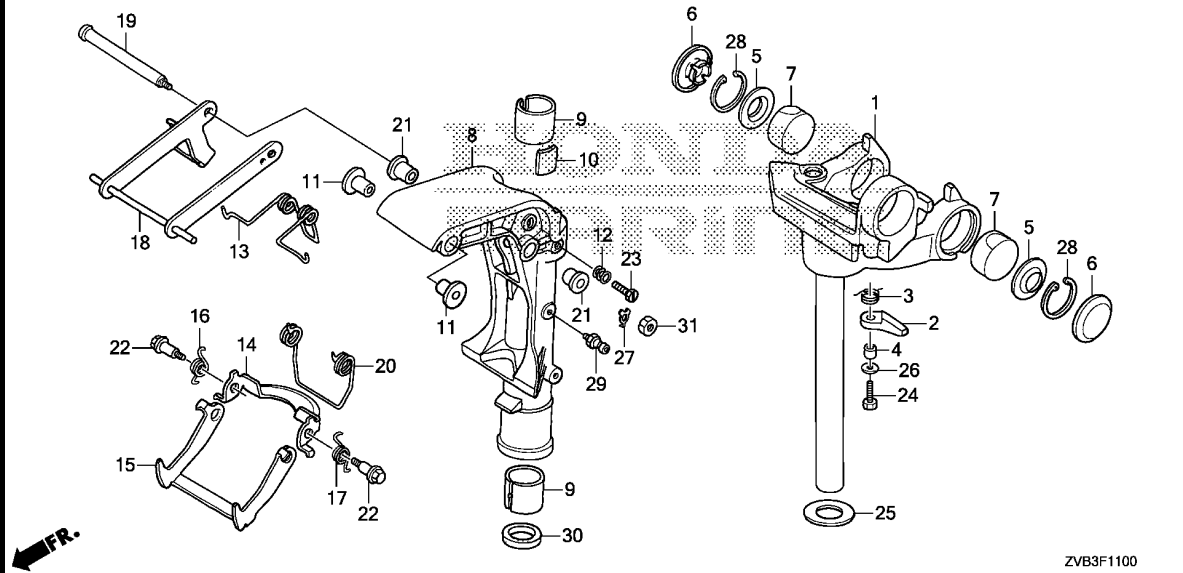


Ref. No.	L.O.N.	(Relative ref. Number) Description	F.R.T.
1	4101H7	FRAME, MOUNTINGINCLUDES: Engine removal and installation	1.5
2	8101AB	STOPPER, STEERING HANDLE	0.1
7	4101R3	RUBBER, UPPER MOUNTING	0.1
8	4131B1	CASE, SWIVELINCLUDES: Engine removal and installation	1.8
10	4131X2	BLOCK, FRICTION	0.6
13	4131X3	SPRING, HOOK RETURN	0.2
14	4131X1	PLATE, REVERSE LOCK	0.1
18	4131A4	ARM, TILT	0.2
30	4131N3	OIL SEAL, SWIVEL CASE	0.6

Ref. No.	Part No.	Description	Reqd. QTY				Serial No.	Parts catalogue code
			BF 4 AH	BF 4.9 DH	BF 5 DH	BF 6 AH		
1	50100-ZV1-842ZC	FRAME COMP., MOUNTING *NHB14M*						
2	50105-ZVD-000ZA	STOPPER, STEERING HANDLE *NHB14M*	1	1	1	1		
3	50106-ZVD-000	SPRING, HANDLE	1	1	1	1		
4	50107-ZVD-000	COLLAR, STOPPER	1	1	1	1		
5	50112-ZVD-000	WASHER, MOUNT	2	2	2	2		
6	50113-ZVD-000	CAP, MOUNTING	2	2	2	2		
7	50151-ZVD-000	RUBBER, MOUNTING UPPER	2	2	2	2		
8	50201-ZV1-C01ZB	CASE, SWIVEL *NHB14M*						
9	50211-ZVD-000	LINER, SWIVEL CASE	1	1	1	1		
10	50212-ZVD-000	BLOCK, FRICTION	2	2	2	2		
11	50214-ZV1-000	BUSH, SWIVEL CASE	1	1	1	1		
12	50233-ZVD-000	SPRING, FRICTION ADJUSTING ..	2	2	2	2		
13	50403-ZVD-000	SPRING, HOOK RETURN	1	1	1	1		
14	50511-ZVD-000	PLATE, REVERSE LOCK	1	1	1	1		
15	50512-ZVD-000	HOOK, REVERSE LOCK	1	1	1	1		
16	50513-ZVD-000	SPRING, R. REVERSE LOCK	1	1	1	1		
17	50514-ZVD-000	SPRING, L. REVERSE LOCK	1	1	1	1		
18	50515-ZVD-000	ARM COMP., TILT	1	1	1	1		
19	50517-ZVD-000	SHAFT, TILT	1	1	1	1		
20	50519-ZVD-000	SPRING, REVERSE LOCK	1	1	1	1		

F-11

SWIVEL CASE/MOUNT FRAME

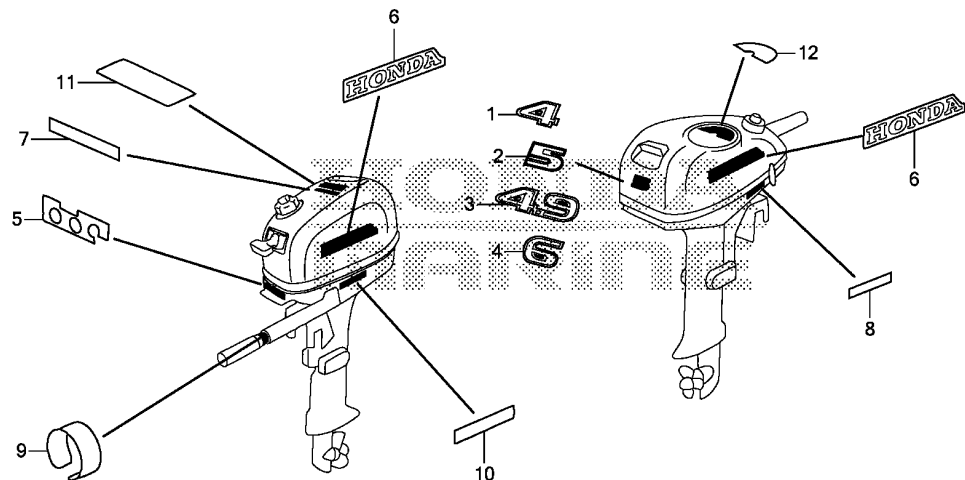


ZVB3F1100

Ref. No.	Part No.	Description	Reqd. QTY				Serial No.	Parts catalogue code
			BF 4	BF 4.9	BF 5	BF 6		
21	50521-ZV1-000	BUSH, TILT LEVER	2	2	2	2		
22	90105-ZVD-000	BOLT, REVERSE LOCK	2	2	2	2		
23	90109-ZVD-000	BOLT, SPECIAL, 8X20	1	1	1	1		
24	90124-ZV4-000	BOLT, HEX., 6X20	1	1	1	1		
25	90505-ZVD-000	WASHER, THRUST	1	1	1	1		
26	90506-ZVD-000	WASHER, PLAIN, 6MM	1	1	1	1		
27	90512-ZVD-000	WASHER, LOCK	1	1	1	1		
28	90651-ZV1-000	CIRCLIP, INTERNAL, 40	2	2	2	2		
29	90951-ZV7-010	NIPPLE, GREASE	1	1	1	1		
30	91256-ZV1-003	OIL SEAL, 27.8X33X5 (ARAI) ...	1	1	1	1		
31	94002-06490-0S	NUT, HEX., 6MM	1	1	1	1		

F-12

LABEL



ZVB3F1200

Ref. L.O.N. (Relative ref. Number) F.R.T.
No. Description

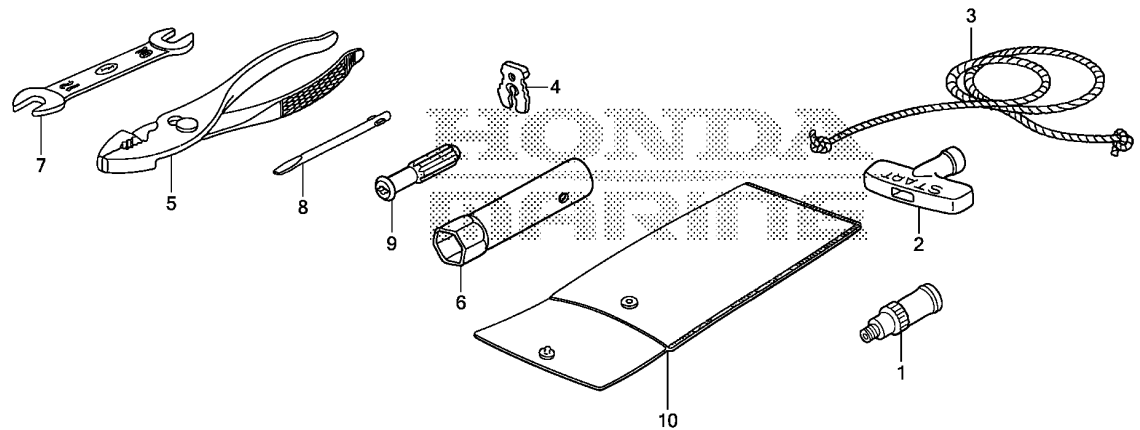
NO INFORMATION

Ref. No.	Part No.	Description	Reqd. QTY				Serial No.	Parts catalogue code
			BF 4 AH	BF 4.9 DH	BF 5 DH	BF 6 AH		
1	87121-ZVB-000	MARK, RR.(4)	1	-	-	-		
2	87121-ZVC-000	MARK, RR.(5)	-	-	1	-		
3	87121-ZVC-K00	MARK, RR.(4.9)	-	1	-	-		
4	87121-ZVD-000	MARK, RR.(6)	-	-	-	1		
5	87123-ZVD-000	LABEL, INDICATION(EU)	1	1	1	1		
6	87132-ZVD-000	MARK, SIDE STRIPE(HONDA)	2	2	2	2		
7	87302-ZVA-D00	MARK, FOUR STROKE	1	1	1	1	-----	LHD,LHND,LHND,LHND,SHD,SHND,SHNH,SHNK
8	87511-ZVB-000	MARK, CHANGE FUEL COCK(EU) ..	1	-	-	-		
	87511-ZVD-000	-	1	1	1		
9	87532-ZVD-000	MARK, THROTTLE(J,EF)	1	1	1	1		
10	87535-ZVD-000	LABEL, STORING OILCAUTION(EU)	1	1	1	1		
11	87538-ZVD-000	LABEL, WARNING OPERATOR(EU) ..	1	1	1	1		
12	87546-ZVD-000	MARK, EMERGENCY START(EU) ...	1	-	1	1		
	87546-ZVD-A00	MARK, EMERGENCY START(ENGLISH)	-	1	-	-		



F-13

TOOL/WATER HOSE JOINT



ZVB3F1300

Ref. No.	L.O.N.	(Relative ref. Number) Description	F.R.T.
----------	--------	------------------------------------	--------

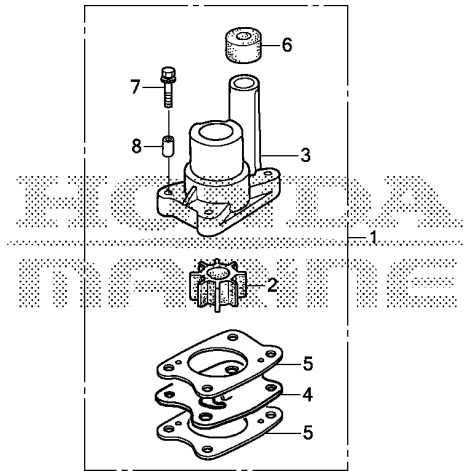
NO INFORMATION

3

Ref. No.	Part No.	Description	Reqd. QTY				Serial No.	Parts catalogue code
			BF 4	BF 4.9	BF 5	BF 6		
1	19271-ZV1-000	JOINT, WATER HOSE	(1)	(1)	(1)	(1)		
2	28461-ZH8-013	KNOB, RECOIL STARTER	1	1	1	1		
3	28462-ZW9-003	ROPE, RECOIL STARTER(1300MM)	1	1	1	1		
4	36187-ZV4-652	CLIP, EMERGENCY LOCK	1	1	1	1		
5	89213-KWK-900	PLIERS	1	1	1	1		
6	89216-ZVA-000	WRENCH, BOX(P16)	1	1	1	1		
7	99001-10120	SPANNER, 10X12	1	1	1	1		
8	99003-30000	DRIVER 3, MINUS SCREW(NO.2)	1	1	1	1		
9	99003-50000	GRIP, SCREW DRIVER	1	1	1	1		
10	99008-01600	BAG, TOOL, 160MM	1	1	1	1		

FOP-2

WATER PUMP IMPELLER KIT



ZVB3Y0200

Ref. No.	L.O.N.	(Relative ref. Number) Description	F.R.T.
1	1141B8	PUMP KIT, IMPELLER	0.2
2	1141B9	IMPELLER, PUMP	0.2
5	1141A9	GASKET, IMPELLER	0.2
.NOTE: Same time for two units			
6	1141F3	RING, WATER TUBE SEAL	0.2

Ref. No.	Part No.	Description	Reqd. QTY				Serial No.	Parts catalogue code
			BF 4 AH	BF 4.9 DH	BF 5 DH	BF 6 AH		
1	06193-ZVD-000	PUMP KIT, IMPELLER	(1)	(1)	(1)	(1)		
2	19210-ZVD-003	IMPELLER, PUMP	(1)	(1)	(1)	(1)		
3	19220-ZVD-000	HOUSING COMP., IMPELLER	(1)	(1)	(1)	(1)		
4	19231-ZVD-000	COVER, IMPELLER	(1)	(1)	(1)	(1)		
5	19232-ZV1-A10	GASKET, IMPELLER	(2)	(2)	(2)	(2)		
6	19253-ZVD-000	RING, WATER TUBE SEAL	(1)	(1)	(1)	(1)		
7	90059-ZY3-000	BOLT-WASHER, 6X29	(4)	(4)	(4)	(4)		
8	90112-ZVD-000	COLLAR B, DISTANCE	(4)	(4)	(4)	(4)		

PART NO. INDEX

Part Number	Page	Ref.	Part Number	Page	Ref.	Part Number	Page	Ref.	Part Number	Page	Ref.	Part Number	Page	Ref.
06000			15220-ZVD-000	21	5	17500-ZV4-G01	45	2	30701-ZVD-003	32	3	41121-ZVD-000	42	12
06177-ZVB-000	34	1	15331-KRF-S00	21	6	17510-ZVD-000	29	6				41131-ZVD-000	42	13
06193-ZVD-000	53	1	15332-KRF-S00	21	7	17514-ZVD-000	29	7	31000			41135-ZVD-000	42	14
06310-ZVD-000ZA	33	1	15335-ZVD-000	21	8	17515-ZVD-000	29	8				41136-ZVD-000	42	14
			15473-ZVD-000	21	9	17534-ZVD-000	29	9	31110-ZVD-003ZA	32	4	41145-ZVD-000	43	5
			15474-ZVD-000	21	10	17550-ZVD-000	29	10	31110-ZVD-601ZA	32	4	41150-ZVD-000	43	6
11000			15475-ZVD-000	21	11	17580-ZZ5-003	45	3				41158-ZV1-000	43	7
			15620-ZVD-000	20	6	17620-ZV4-003	45	4	19271-ZV1-000	52	1	41160-ZVD-000	43	8
11300-ZVD-000ZA	21	1	15625-ZVD-000	20	7	17620-ZVD-000	29	11	19300-881-761	18	10	41161-ZVD-300	43	9
			15721-ZVD-000	20	8	17621-ZVD-000	29	12	19302-921-003	18	11	41201-ZVD-000ZA	43	10
						17622-ZVD-000	29	13	19310-ZVD-000ZA	18	12			
12000						17623-ZVD-000	29	14	19351-ZVD-000	18	13	31580-ZVD-600	33	4
			16000			17624-ZV5-902	45	5				31580-ZVD-600	38	2
12000-ZVD-000ZA	20	1				17624-ZVA-000	29	15	24000			31630-ZVD-601	32	6
12204-Z1T-305	18	1	16010-881-A00	27	1	17625-ZVA-000	29	16					33	5
12205-Z1T-305	18	2	16011-ZV1-F01	27	2	17626-ZVA-000	29	17	24101-ZVD-300	43	1	31750-ZVD-601	33	6
12209-ZVD-G01	23	1	16013-ZV1-F01	27	3	17629-ZVA-000	29	18	24102-ZV1-300	43	2		38	3
12210-ZVD-000ZA	18	3	16015-ZVD-701	27	4	17633-ZVD-000	29	19	24122-ZVD-300	43	3	31751-ZVD-600	33	7
12216-ZE5-300	18	4	16016-ZV1-F01	27	5	17665-ZV5-000	45	6	24123-ZVD-300	43	4		38	4
12251-ZVD-000	18	5	16016-ZVB-003	27	5	17665-ZV9-023	45	7	24210-ZV1-010	36	8	31916-ZVD-003	18	14
12311-ZV1-010	18	6	16016-ZVB-701	27	5	17660-ZW9-003	45	7	24310-ZVD-000	39	1			
12367-ZVD-000	20	2	16016-ZVD-003	27	5	17661-921-010	45	8	24312-ZV1-003	39	2	32000		
12371-ZVD-000	20	3	16024-ZY3-000	27	6	17665-ZV5-000	45	9	24313-ZV1-003	39	3			
12372-ZVD-000	20	4	16028-ZV1-F01	27	7	17680-ZV4-000	45	10	24320-ZVD-000	39	4	32101-ZVD-000	36	13
12373-ZVD-000	20	5	16081-ZV1-A00	27	8	17700-ZW9-030	45	11	24320-ZVD-700	39	4	32972-ZVD-000	36	14
12391-ZVD-000	18	7	16100-ZVB-003	27	9	17701-ZV5-000	45	12	24343-ZVD-000	39	5			
12515-ZVD-000	42	1	16100-ZVB-701	27	9	17702-ZV4-000	45	13	24610-ZVD-000	36	9	35000		
12516-ZVD-000	42	2	16100-ZVC-003	27	9	17703-921-010	45	14	24611-ZVD-000	36	10			
12517-ZVD-000	42	3	16100-ZVC-701	27	9	17704-ZV4-010	45	15	24612-ZVD-000	36	11	35490-ZW9-003	21	12
			16100-ZVD-003	27	9	17710-ZW9-033	29	20	24621-ZVD-000	36	12			
			16100-ZVD-701	27	9				24626-ZVD-000	35	2	36000		
13000			16166-ZV1-F01	27	10	17713-ZVD-000	29	21						
			16166-ZVD-701	27	10	17714-ZVD-000	36	1	28000			36180-ZVD-003	35	3
13010-Z4F-004	22	1	16211-ZVD-000	27	11	17742-ZZ5-003	45	16				36182-ZVD-650	35	4
13101-ZVD-000	22	2	16221-ZVD-000	27	12	17743-ZZ5-003	45	17	28400-ZVD-013	26	1	36187-ZV4-652	52	4
13111-ZVD-000	22	3	16576-ZVA-000	27	13	17910-ZVD-003	35	1	28417-ZVD-003	26	2			
13200-ZVD-000	22	4	16593-ZVD-000	27	14	17913-ZVD-000	36	2	28421-ZVD-003	26	3	37000		
13310-ZVD-000	22	5	16620-ZVD-000	27	15	17921-ZVD-000	36	3	28422-ZVD-003	26	4			
13331-357-000	32	1	16700-ZVD-003	31	1	17931-ZVD-000	28	21	28432-ZV4-003	26	5	37210-ZVD-003	36	15
			16791-ZVD-000	29	1	17932-ZVD-000	28	22	28433-ZE1-711	26	6			
14000			16792-ZVD-000	29	2	17936-ZVA-000	29	22	28435-ZV4-003	26	7	40000		
						17940-ZVD-003	36	4	28436-ZV4-003	26	8			
14100-ZVB-000	23	2				17945-ZVD-000	36	5	28437-ZVD-003	26	9	40100-ZVD-000ZA	47	1
14100-ZVD-000	23	2	16793-ZVD-000	46	1	17951-ZVD-000	36	6	28438-ZV4-003	26	10	40102-ZVD-000	36	16
14410-ZE1-010	23	3	16794-ZVD-000	46	2	17953-ZVD-000	36	7	28441-ZH8-003	26	11	40102-ZVD-600	36	16
14431-ZE1-000	23	4	16795-ZVD-000	31	2				28442-ZVD-003	26	12	40111-ZVD-300	47	2
14441-ZE1-010	23	5	16910-GAH-690	46	3	18000			28443-ZH8-003	26	13	40113-ZVD-300	47	3
14451-Z7E-000	23	6	16950-ZVB-003	29	3				28450-ZVD-000	26	14	40201-ZVD-000ZA	39	6
14711-ZVD-000	23	7	16950-ZVD-003	29	4	18110-ZVD-000ZA	18	8	28461-ZH8-013	52	2	40201-ZVD-700ZA	39	6
14721-ZVD-000	23	8				18115-ZVD-000	18	9	28461-ZV4-013	26	15			
14751-ZVD-000	23	9	16952-ZE6-000	29	5				28462-ZVD-003	26	16	40202-ZVD-000	39	7
14771-ZVD-000	23	10	16977-ZV5-A00	45	1	19000			28462-ZW9-003	52	3	40204-ZVD-000	39	8
14775-ZVD-000	23	11							28466-ZW9-003	26	17	40205-ZVD-000	39	9
14781-107-003	23	12	17000			19210-ZVD-003	42	4						
14791-ZE1-010	23	13							30000			41005-ZVD-000ZA	41	1
			17101-ZVD-000	27	16	19220-ZVD-000	42	5						
15000			17151-ZVD-000	27	17				30419-ZY9-003	29	23	41100-ZV1-C00ZB	39	10
			17201-ZVD-000	28	18	19231-ZVD-000	42	6	30500-ZVB-003	32	2	41106-ZV4-650	39	11
15130-ZVD-000	21	2	17202-ZVD-000	28	19				30500-ZVC-003	32	2	41110-ZV1-010	42	11
15131-ZVD-000	21	3	17203-ZVD-000	28	20	19232-ZV1-A10	42	7	30500-ZVD-003	32	2	41110-ZV1-701	42	11
15136-ZVD-000	21	4	17500-ZV4-A26	45	2									

PART NO. INDEX

Part Number	Page	Ref.	Part Number	Page	Ref.	Part Number	Page	Ref.	Part Number	Page	Ref.	Part Number	Page	Ref.	Part Number	Page	Ref.
53165-ZVD-000	35	15	90012-ZV1-010	28	23		48	13									
			90013-ZV0-010	36	22		50	26	94301-08140	21	21						
58000			90013-ZV4-010	29	24	90507-ZVA-000	40	24									
			90013-ZVD-000	18	15	90507-ZVD-000	28	28	94301-10160	18	19						
58130-ZVD-003ZA	43	11	90013-ZW9-000	28	24	90508-ZVD-000	37	27	94305-20063	48	17						
	44	11	90016-ZVD-000	28	25	90512-ZVD-000	50	27	94305-25102	40	31						
58130-ZVD-601ZA	43	11	90018-ZVD-000	18	16	90514-ZVD-000	48	14									
	44	11	90018-ZW5-000	33	9	90543-ZVD-000	35	18	95000								
58130-ZVD-701ZA	43	11		38	6	90551-ZE1-000	22	8									
58130-ZVD-801ZA	43	11	90019-ZVD-000	26	18	90601-ZVD-000	31	5	95002-02089	31	7						
58130-ZVD-U01ZA	43	11		28	26	90602-ZVD-000	30	28	95002-02109	30	32						
58131-ZV1-010	36	17	90020-ZVD-000	29	25		34	6									
	44	12	90030-ZY3-000	18	17	90651-ZV1-000	50	28									
58141-ZVD-000	44	13	90031-ZY3-000	18	18	90658-SAO-003	46	4	95002-02129	30	33						
				32	8	90701-ZVA-000	30	29	95003-07018-31	28	30						
63000				33	10	90751-ZVD-000	40	25	95801-08090-09	18	20						
			90036-ZVD-000	21	14	90752-ZVD-000	35	19									
63100-ZVD-000ZA	47	4	90058-ZVA-000	32	9	90754-ZVD-000	37	28	96000								
63102-ZVD-300	47	5	90059-ZY3-000	42	15	90755-ZVD-000	37	29									
63232-ZVD-000	36	18		53	7	90855-ZVD-300	48	15	96100-60040-00	44	19						
63236-ZVD-000	36	19	90102-ZVD-000	40	16	90951-ZV7-010	50	29	96100-62050-00	20	11						
			90103-ZVD-000	48	9				96300-06012-00	21	22						
87000			90104-ZVD-000	47	6	91000											
			90105-ZVA-000	40	17				99000								
87121-ZVB-000	51	1	90105-ZVD-000	50	22	91101-ZV5-003	42	17									
87121-ZVC-000	51	2	90107-ZVD-000	48	10	91151-VD6-851	40	26	99001-10120	52	7						
87121-ZVC-K00	51	3	90109-ZVD-000	50	23	91252-888-003	20	10	99003-30000	52	8						
87121-ZVD-000	51	4	90111-881-000	40	18		21	16	99003-50000	52	9						
87123-ZVD-000	51	5	90112-ZVA-000	37	23	91252-ZV1-003	42	18	99008-01600	52	10						
87132-ZVD-000	51	6	90112-ZVD-000	42	16		44	16	99101-ZF5-0680	28	31						
87302-ZVA-D00	51	7		53	8	91253-ZW9-003	40	27	99101-ZF5-0700	28	31						
87511-ZVB-000	51	8	90112-ZY1-000	30	26	91255-ZV1-003	21	17	99101-ZF5-0720	28	31						
87511-ZVD-000	34	5	90114-881-000	40	19	91256-ZV1-003	50	30	99101-ZF5-0780	28	31						
	51	8	90117-ZVA-000	20	9	91303-ZV1-003	40	28	99101-ZF5-0800	28	31						
87532-ZVD-000	51	9		21	15	91305-639-000	21	18	99101-ZF5-0820	28	31						
87535-ZVD-000	51	10		28	27	91306-921-000	31	6	99103-881-0350	28	32						
87538-ZVD-000	51	11		32	10	91351-ZV1-003	44	17	99103-881-0380	28	32						
87546-ZVD-000	51	12	90119-ZVD-000	35	16	91352-526-000	37	30									
87546-ZVD-A00	51	12	90124-ZV4-000	50	24	91452-ZVD-000	37	31									
			90201-881-000	32	11	91501-ZVD-300	30	30									
88000			90202-ZVD-000	26	19	91553-ZV5-010	30	31									
			90206-ZE1-000	23	15												
88111-ZVA-000	36	20	90215-HW1-671	40	20	92000											
				44	14												
89000			90301-ZVD-000	40	21	92101-05016-4J	37	32									
			90303-ZVA-000	35	17	92101-06012-0A	21	19									
89213-KWK-900	52	5		37	24	92101-06016-4J	35	20									
89216-ZVA-000	52	6	90304-ZV4-000	40	22												
			90305-ZV4-000	48	11	94000											
90000			90402-ZVD-000	31	4												
			90403-ZW1-000	26	20	94001-05490-0S	40	29									
90001-Z1T-000	22	6	90404-ZVA-000	30	27	94001-06490-0S	28	29									
90001-ZVD-000	32	7	90452-GK4-600	37	25		48	16									
90002-ZVD-000	31	3	90459-ZVD-000	22	7	94002-06490-0S	35	21									
90004-ZVD-000	21	13	90501-ZVD-000	37	26		50	31									
90011-ZW9-000	33	8	90503-ZV1-000	44	15	94109-12000	21	20									
	36	21	90503-ZVD-000	48	12	94201-16102	37	33									
	38	5	90505-ZVD-000	50	25	94201-20102	35	22									
90012-ZE0-010	23	14	90506-ZVD-000	40	23	94201-30252	37	34									

PART NAME INDEX

Part name	Page	Ref.	Part name	Page	Ref.	Part name	Page	Ref.
[A]			BOLT, HEX., 6X140	48	9			
ARM A, THROTTLE	28	21	BOLT, HEX., 6X16	35	20	CLIP, VALVE GUIDE	46	5
ARM B, THROTTLE	28	22	BOLT, HEX., 6X20	50	24	CLIP, WIRE HARNESS	18	4
ARM COMP., SHIFT	36	11	BOLT, HEX., 6X32	40	18	COCK ASSY., FUEL	46	4
ARM COMP., TILT	49	18	BOLT, HEX., 6X40	40	19		29	3
ARM, STOPPER	26	8	BOLT, HEX., 8X130	48	10			4
ARM, VALVE ROCKER	23	4	BOLT, OIL CHECK	40	17	COIL ASSY., CHARGE	34	3
[B]			BOLT, PIVOT, 8MM	23	14		32	6
BAG, TOOL, 160MM	52	10	BOLT, REVERSE LOCK	50	22		33	5
BAND, TUBE CLIP, 12.5MM	45	15	BOLT, SOCKET, 6X22	31	3	COIL ASSY., IGNITION	32	2
BAND, TUBE CLIP, 20MM	45	14	BOLT, SPECIAL	32	7	COLLAR B, DISTANCE	42	16
BARREL ASSY., CYLINDER	20	1	BOLT, SPECIAL, 6MM	29	25		53	8
BEARING, RADIAL BALL, 6004	44	19	BOLT, SPECIAL, 6X22	30	26	COLLAR, 6.5X7.5	30	27
BEARING, RADIAL BALL, 6205	20	11	BOLT, SPECIAL, 8X20	50	23	COLLAR, C.D.I. UNIT CASE	30	31
BLOCK, FRICTION	49	10	BRACKET COMP., L. STERN	48	3	COLLAR, DISTANCE	28	19
BLOCK, THROTTLE FRICTION	35	8	BRACKET COMP., R. STERN	48	2	COLLAR, DISTANCE, 6MM	48	6
BODY, FUEL CAP	29	12	BRACKET, BATTERY CABLE	33	4	COLLAR, FUEL TANK INSULATOR	30	30
BOLT-WASHER, 5MM	45	17		38	2	COLLAR, SHIFT SHAFT	36	10
BOLT-WASHER, 6X16	47	6	BRACKET, CABLE	36	5	COLLAR, STEERING HANDLE	35	12
BOLT-WASHER, 6X29	42	15	BRACKET, COUPLER A	36	13	COLLAR, STOPPER	49	4
	53	7	BRACKET, REGULATOR	33	7	CONNECTOR ASSY., FUEL	29	20
BOLT-WASHER, 6X50	40	16		38	4		34	4
BOLT, CONNECTING ROD	22	6	BULB, PRIMER	45	8	CONNECTOR COMP., FUEL	45	6
BOLT, DRAIN PLUG, 12MM	21	13	BUSH, SHAFT	36	12	CONNECTOR KIT, FUEL	45	7
BOLT, FLANGE, 5X10	32	9	BUSH, SWIVEL CASE	49	11	CORD COMP., EMERGENCY	34	1
BOLT, FLANGE, 6X102	28	23	BUSH, TILT LEVER	50	21	COTTER, VALVE	35	4
BOLT, FLANGE, 6X12	18	15	[C]			COVER COMP., ENGINE	23	12
	20	9	CABLE COMP., CHOKE	27	15	COVER, HEAD	47	4
	21	15	CABLE COMP., NEUTRAL STARTING	36	4	COVER, IMPELLER	18	6
	22	22	CABLE COMP., THROTTLE	35	1		42	6
	28	24	CAMSHAFT ASSY.	23	2	COVER, OIL PUMP	53	4
	32	10	CAP ASSY., FUEL TANK	29	11	COVER, THERMOSTAT	21	2
	36	22	CAP COMP., FUEL FILLER	45	4	COVER, THERMOSTAT	18	12
	37	23	CAP, BREATHER CHAMBER	20	3	CRANKSHAFT COMP.	22	5
BOLT, FLANGE, 6X14	33	8	CAP, FUEL CONNECTOR	36	1	[D]		
	36	21	CAP, MOUNTING	49	6	DOWEL PIN, 10X16	18	19
	38	5	CAP, OIL FILLER	20	6	DOWEL PIN, 8X14	21	21
BOLT, FLANGE, 6X16	40	20	CAP, PROPELLER	44	13		40	30
	44	14	CAP, STARTER KNOB	26	17	DOWEL PIN, 8X16	40	25
BOLT, FLANGE, 6X20	29	24	CARBURETOR ASSY.	27	9	DRIVER 3, MINUS SCREW	52	8
	33	9	CASE ASSY., GEAR	41	1	[F]		
	38	6	CASE COMP., ENGINE UNDER	47	1	FILTER KIT, FUEL	45	3
BOLT, FLANGE, 6X22	18	17	CASE COMP., GEAR	39	10	FILTER, BREATHER	20	2
BOLT, FLANGE, 6X28	28	25	CASE, EXTENSION	39	6	FITTING, QUICK DISCONNECT	45	1
BOLT, FLANGE, 6X32	18	18	CASE, SWIVEL	49	8	FLOAT SET	27	3
	32	8	CHAMBER SET, FLOAT	27	4	FLYWHEEL COMP.	32	4
	33	10	CIRCLIP, INTERNAL, 40	50	28		33	2
BOLT, FLANGE, 6X40	26	18	CLAMPER COMP., CORD	32	5	FRAME COMP., MOUNTING	49	1
	28	26	CLIP, EMERGENCY LOCK	52	4	[G]		
	21	14	CLIP, HIGH TENSION CORD	32	3	GASKET SET	27	1
BOLT, FLANGE, 8X32	21	14	CLIP, PISTON PIN, 18MM	22	8	GASKET, CYLINDER HEAD	18	5
BOLT, FLANGE, 8X60	18	16	CLIP, TUBE	30	28	GASKET, EX. MANIFOLD	18	9
BOLT, FLANGE, 8X90	18	20						
BOLT, FRICTION	35	7						
BOLT, HEX., 5X16	37	32						
BOLT, HEX., 6X12	21	19						

PART NAME INDEX

Part name	Page	Ref.	Part name	Page	Ref.	Part name	Page	Ref.
GASKET, IMPELLER	42	7	JOINT, R. SHIFT ROD	39	2	0-RING	40	28
	53	5	JOINT, WATER HOSE	52	1		44	17
GASKET, LOWER EX. CHAMBER	42	3				0-RING, 20.8X2.4	31	6
GASKET, UPPER EX. CHAMBER	42	2	[K]			0-RING, 9.5X3	21	18
GEAR COMP., BEVEL	43	5				0-RING, 9.8X2.4	37	30
		6	KEY, SPECIAL WOODRUFF, 25X18 ..	32	1	0-RING, PUMP COVER	21	3
GEAR, PINION	42	13	KNOB, CHOKE	36	6			
GRIP, CLAMP	48	4	KNOB, RECOIL STARTER	52	2	[P]		
GRIP, SCREW DRIVER	52	9				PACKING, BREATHER CAP	20	5
GRIP, STARTER	26	15	[L]			PACKING, BREATHER VALVE	29	15
GROMMET A, UNDER CASE	36	16	LABEL, INDICATION	51	5	PACKING, CARBURETOR	27	12
GROMMET, CORD	36	14	LABEL, STORING OILCAUTION	51	10	PACKING, FUEL CAP	29	16
GROMMET, ELECTRONIC PARTS CASE ..	29	23	LABEL, WARNING OPERATOR	51	11			
GROMMET, EXTENSION	39	7	LAMP ASSY., INDICATOR	36	15	PACKING, FUEL PICK UP	45	5
GROMMET, FUEL CONNECTOR	29	21	LEVER, FASTENER	36	18	PACKING, FUEL PICK UP	45	16
GROMMET, LOCK SHAFT	39	9	LIFTER, VALVE	23	5	PACKING, HEAD COVER	18	7
GROMMET, THROTTLE CABLE	36	2	LINER, SWIVEL CASE	49	9	PACKING, INTAKE MANIFOLD	27	17
GROMMET, WATER TUBE	42	9				PACKING, OIL FILLER CAP	20	7
GUIDE COMP., AIR	28	18	[M]			PACKING, THERMOSTAT COVER	18	13
GUIDE, CHOKE KNOB	36	7	MANIFOLD COMP., EX.	18	8	PAN ASSY., OIL	21	1
GUIDE, EX. VALVE	18	2	MANIFOLD, INTAKE	27	16	PEG RECT ASSY	33	6
GUIDE, IN. VALVE	18	1	MARK, CHANGE FUEL COCK	34	5			
GUIDE, RATCHET	26	6				PIN, 5X47	37	29
[H]			MARK, EMERGENCY START	51	12	PIN, HEX., 5X15	37	28
HANDLE, STEERING	35	5	MARK, FOUR STROKE	51	7	PIN, LOCK, 4MM	30	29
HARN ASSY., GENERATOR POWER ..	33	3	MARK, RR.	51	1	PIN, PISTON	22	3
	38	1				PIN, SHEAR	36	17
HEAD COMP., CYLINDER	18	3					44	12
HOLDER, CABLE	27	13				PIN, SHIFTER, 3X26	43	2
	36	3	MARK, SIDE STRIPE	51	6	PIN, SPLIT	26	10
HOLDER, PARTS	36	20	MARK, THROTTLE	51	9	PIN, SPLIT, 1.6	37	33
HOLDER, PROPELLER SHAFT	43	10	METAL, ANODE	39	11	PIN, SPLIT, 2	35	22
HOLDER, SEAL	39	5				PIN, SPLIT, 3.0	37	34
HOOK, REVERSE LOCK	49	15	[N]				44	18
HOUSING COMP., IMPELLER	42	5	NIPPLE, GREASE	50	29	PIN, SPRING, 2X6	48	17
	53	3	NOZZLE, MAIN	27	10	PIN, SPRING, 2.5X10	40	31
HOUSING, L. LOWER MOUNTING ...	39	13	NUT, FLANGE CAP, 6MM	26	19	PIN, SPRING, 4X28	35	19
HOUSING, R. LOWER MOUNTING ...	39	12	NUT, HEX., 16MM	35	17	PIPE, GRIP	35	13
						PISTON	22	2
[I]			NUT, HEX., 5MM	40	29	PIVOT, ROCKER ARM	23	6
IMPELLER, PUMP	42	4	NUT, HEX., 6MM	28	29	PLATE, CHECK VALVE	21	11
	53	2				PLATE, EX. CHAMBER	42	1
INNER, FUEL CAP	29	13	NUT, PIVOT ADJUSTING	23	15	PLATE, PUSH	48	1
INSULATOR COMP., FUEL TANK ...	29	10	NUT, REVERSE LOCK	40	21	PLATE, PUSH ROD GUIDE	23	13
INSULATOR, CARBURETOR	27	11	NUT, SELF-LOCK, 8MM	48	11	PLATE, REVERSE LOCK	49	14
			NUT, SPECIAL, 14MM	32	11	PLATE, SHIFT SHAFT	35	2
[J]						PLATE, STEERING HANDLE	35	11
JET COMP.	28	32	[O]			PLIERS	52	5
JET, MAIN, #68	28	31	OIL SEAL, 25X38X7	20	10	PLUG, SPARK	18	14
JET, MAIN, #70	28	31				PROPELLER COMP., THREE BLADES ..	43	11
JET, MAIN, #72	28	31	OIL SEAL, 27.8X33X5	50	30		44	11
JET, MAIN, #78	28	31				PUMP ASSY., FUEL	31	1
JET, MAIN, #80	28	31				PUMP KIT, IMPELLER	53	1
JET, MAIN, #82	28	31						
JOINT, L. SHIFT ROD	39	3				[R]		
						RATCHET, STARTER	26	4
						RECEPTACLE KIT, CHARGE	33	1
						REEL COMP., THROTTLE	35	6



PART NAME INDEX

Part name	Page	Ref.	Part name	Page	Ref.	Part name	Page	Ref.
REEL, RECOIL STARTER	26	3	SHIM B, GEAR	43	7	VALVE, IN.	23	7
RETAINER, VALVE SPRING	23	10	SLIDER, SHIFT	43	3			
RING SET, PISTON	22	1	SPANNER, 10X12	52	7	[W]		
RING, STOPPER	37	31	SPONGE, FUEL CAP BREATHER	29	14	WASHER	26	5
RING, WATER TUBE SEAL	42	10	SPRING COMP., CLICK	36	8	WASHER A	42	14
	53	6	SPRING, CHECK VALVE	21	10	WASHER B	42	14
RIVET, 4X22.6	48	15	SPRING, FRICTION	26	11	WASHER, 13MM	44	15
ROD ASSY., CONNECTING	22	4	SPRING, FRICTION ADJUSTING	49	12	WASHER, DRAIN PLUG, 12MM	21	20
ROD A, SHIFT	39	4	SPRING, FUEL CAP	29	18	WASHER, LOCK	50	27
ROD COMP. B, SHIFT	39	1	SPRING, GRIP PIPE	35	14	WASHER, MOUNT	49	5
ROD COMP., ADJUSTING	48	7	SPRING, HANDLE	49	3	WASHER, NYLON, 8MM	40	24
ROD, PUSH	23	3	SPRING, HOOK RETURN	49	13	WASHER, PLAIN, 10MM	35	18
ROD, THROTTLE	27	14	SPRING, L. REVERSE LOCK	49	17			
ROLLER, 2.5X11.8	40	26	SPRING, RECOIL STARTER	26	12	WASHER, PLAIN, 5MM	37	25
ROLLER, 4X10	42	17	SPRING, RETURN	26	13	WASHER, PLAIN, 6MM	26	20
ROPE, RECOIL STARTER	26	16	SPRING, REVERSE LOCK	49	20			
	52	3	SPRING, R. REVERSE LOCK	49	16			
ROTOR, OIL PUMP INNER	21	6	SPRING, SHIFT	43	4			
ROTOR, OIL PUMP OUTER	21	7	SPRING, STOPPER	26	9			
RUBBER A, LOWER MOUNTING	39	14	SPRING, VALVE	23	9	WASHER, PLAIN, 8MM	48	14
RUBBER B, LOWER MOUNTING	39	15	STARTER ASSY., RECOIL	26	1	WASHER, SPRING, 6MM	48	12
RUBBER, GRIP	35	15	STOPPER, REEL	26	7	WASHER, THRUST	50	25
RUBBER, HANDLE MOUNTING	35	9	STOPPER, ROD	48	8	WASHER, THRUST, 25MM	22	7
		10	STOPPER, STEERING HANDLE	49	2	WASHER, TONGUED	37	26
RUBBER, MOUNTING UPPER	49	7	STRAINER COMP., FUEL	46	3	WIRE, FASTENER	36	19
RUBBER, OIL RETURN	21	8	STRAINER COMP., OIL	21	5	WRENCH, BOX	52	6
RUBBER, TANK CAP	29	8	STRAINER, FUEL	29	5			
RUBBER, TANK MOUNTING	29	7	SWITCH ASSY., EMERGENCY STOP ..	35	3			
RUBBER, THERMOSTAT	18	11	SWITCH ASSY., OIL PRESSURE	21	12			
[S]			[T]					
SCREW SET	27	5	TANK ASSY., FUEL	45	2			
		7	TANK COMP, FUEL	29	6			
SCREW SET, DRAIN	27	6	TETHER, FUEL CAP	29	19			
SCREW, CLAMP	48	5	THERMOSTAT ASSY.	18	10			
SCREW, PAN	27	8	TRAP, FLAME	28	20			
SCREW, PAN, 6X8	35	16	TUBE ASSY., FUEL	45	11			
SCREW, TAPPING, 5X20	26	2	TUBE B, FUEL	29	2			
SEAL A, UNDER CASE	47	2		34	2			
SEAL COMP., RECOIL	26	14	TUBE COMP. A, FUEL	29	1			
SEAL C, UNDER CASE	47	3	TUBE COMP. C, FUEL	46	1			
SEAL, COUPLING, 25X40X14	21	17	TUBE D, FUEL	46	2			
SEAL, ENGINE COVER	47	5	TUBE E, FUEL	31	2			
SEAL, FUEL TANK	29	9	TUBE, BREATHER	20	8			
SEAL, VALVE STEM	23	1	TUBE, FUEL LONG	45	12			
SEAL, WATER, 13MM	42	18	TUBE, FUEL SHORT	45	13			
	44	16	TUBE, VINYL, 4X7X180	28	30			
SEAL, WATER, 6MM	40	27	TUBE, WATER	42	8			
SEAT, VALVE SPRING	23	11						
SHAFT COMP., PROPELLER	43	8	[V]					
SHAFT COMP., SHIFT	36	9	VALVE COMP., BREATHER	29	17			
SHAFT COMP., VERTICAL	42	11	VALVE COMP., IN.	45	9			
SHAFT, OIL PUMP	21	4	VALVE COMP., OUTLET	45	10			
SHAFT, PINION	42	12	VALVE SET, FLOAT	27	2			
SHAFT, PROPELLER	43	9	VALVE, BREATHER	20	4			
SHAFT, REVERSE LOCK	39	8	VALVE, CHECK	21	9			
SHAFT, TILT	49	19	VALVE, EX.	23	8			
SHIFTER, CLUTCH	43	1						

1

FOREWORD INDEX

2

ENGINE GROUP

3

FRAME GROUP

4

PART NUMBER INDEX

5

PART NAME INDEX

HONDA
The Power of Dreams

HONDA
MARINE

PARTS CATALOGUE NEWS

Service Technology Department, Power Products Operations
Service Division, Honda Motor Co., Ltd.

PARTS CATALOGUE - CORRECTED

Printed in Japan

CODE NO.	13ZVBG01
PARTS CATALOGUE NEWS	BF4AH BF4.9DH BF5DH BF6AH
NEWS NO.	001

Block No.	Ref. No.	Note	Part No.	Description	Reqd. QTY				Serial No.	Parts catalogue code
					BF 4 AH	BF 4.9 DH	BF 5 DH	BF 6 AH		
E-11	1	E	28400-ZVD-013	*PART NO. DELETION						
		D	28400-ZVD-033	STARTER ASSY., RECOIL.....	1	1	1	1		
	3	E	28421-ZVD-003	*PART NO. DELETION						
		D	28421-ZVD-013	REEL, RECOIL STARTER.....	1	1	1	1		
	14	E	28450-ZVD-000	*PART NO. DELETION						
		D	28450-ZVD-010	SEAL COMP., RECOIL.....	1	1	1	1		
E-17	6	E	17510-ZVD-000	*PART NO. DELETION						
		D	17510-ZVD-010	TANK COMP., FUEL.....	1	1	1	1		

NOTE A:PART NO. CHANGE D:NEWLY PROVIDED E:PART NO. DELETION K:REQUIRED NO. CORRECTION L:APPLICATION SERIAL NO. CORRECTION
M:PART DESCRIPTION CORRECTION T:APPLICATION CORRECTION Z:REMARKS CHANGE

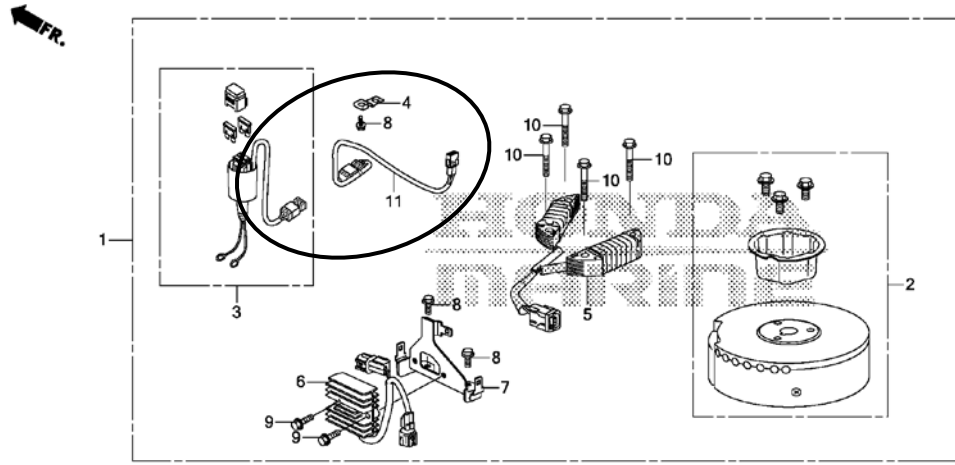
PARTS CATALOGUE NEWS

BOOKNo. :13ZVBG01

Block No.	Ref. No.	Note	Part No.	Description	Reqd. QTY				Serial No.	Parts catalogue code
					BF 4 AH	BF 4.9 DH	BF 5 DH	BF 6 AH		

EOP-2 CHARGE RECEPTACLE KIT

Ref. No.	(Relative ref. Number)	Description	FRT
11	6131B6	RECEPTACLE, CHARGE	0.3



ZVB3X0200A

EOP-2	1	E	06310-ZVD-000ZA	*PART NO. DELETION						
		D	06310-ZVD-010ZA	RECEPTACLE KIT, CHARGE *BLACK*.....BLACK	(1)	(1)	(1)	(1)	-----	LHND, LHNH, LHNK, LHNU, SHND, SHNH, SHNK, SHNU
	3	E	31575-ZVD-600	*PART NO. DELETION						
		D	31575-ZVD-601	HARNESS ASSY., BATTERY.....	(1)	(1)	(1)	(1)	-----	LHND, LHNH, LHNK, LHNU, SHND, SHNH, SHNK, SHNU
	4	E	31580-ZVD-600	*PART NO. DELETION						
		D	31580-ZVD-601	BRACKET, BATTERY CABLE.....	(1)	(1)	(1)	(1)	-----	LHND, LHNH, LHNK, LHNU, SHND, SHNH, SHNK, SHNU
	11	D	31650-ZVD-600	RECEPTACLE ASSY., CHARGE.....	(1)	(1)	(1)	(1)	-----	LHND, LHNH, LHNK, LHNU, SHND, SHNH, SHNK, SHNU

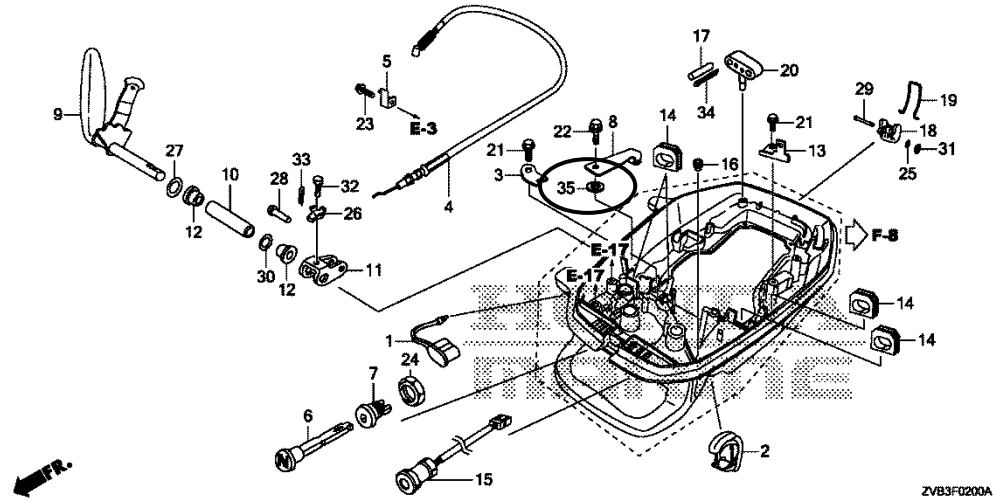
NOTE A:PART NO. CHANGE D:NEWLY PROVIDED E:PART NO. DELETION K:REQUIRED NO. CORRECTION L:APPLICATION SERIAL NO. CORRECTION
M:PART DESCRIPTION CORRECTION T:APPLICATION CORRECTION Z:REMARKS CHANGE

PARTS CATALOGUE NEWS

BOOKNo. :13ZVBG01

Block No.	Ref. No.	Note	Part No.	Description	Reqd. QTY				Serial No.	Parts catalogue code
					BF 4 AH	BF 4.9 DH	BF 5 DH	BF 6 AH		

F-2 SHIFT SHAFT/COVER LOCK LEVER



F-2	35	D	90402-ZVD-000	WASHER, PLAIN, 6MM.....	1	1	1	1		
-----	----	---	---------------	-------------------------	---	---	---	---	--	--

NOTE A:PART NO. CHANGE D:NEWLY PROVIDED E:PART NO. DELETION K:REQUIRED NO. CORRECTION L:APPLICATION SERIAL NO. CORRECTION
M:PART DESCRIPTION CORRECTION T:APPLICATION CORRECTION Z:REMARKS CHANGE

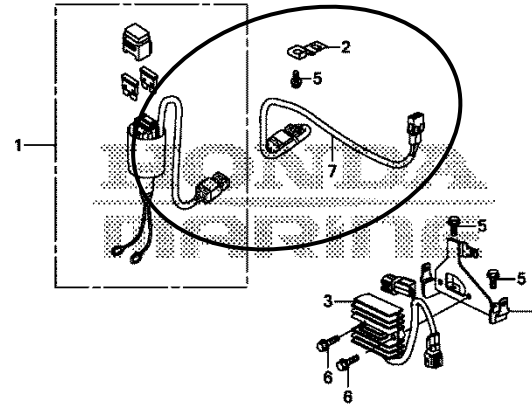
PARTS CATALOGUE NEWS

BOOKNo. :13ZVBG01

Block No.	Ref. No.	Note	Part No.	Description	Reqd. QTY				Serial No.	Parts catalogue code
					BF 4 AH	BF 4.9 DH	BF 5 DH	BF 6 AH		

F-2-20 REGULATOR RECTIFIER

Ref. No.	(Relative ref. Number)	Description	FRT
7	6131B6	RECEPTACLE, CHARGE	0.3



ZV63F0220A

F-2-20	1	E	31575-ZVD-600	*PART NO. DELETION						
		D	31575-ZVD-601	HARNESS ASSY., BATTERY.....	-	-	1	1	-----	LHD, LHU, SHD, SHU
	2	E	31580-ZVD-600	*PART NO. DELETION						
		D	31580-ZVD-601	BRACKET, BATTERY CABLE.....	-	-	1	1	-----	LHD, LHU, SHD, SHU
	7	D	31650-ZVD-600	RECEPTACLE ASSY., CHARGE.....	-	-	1	1	-----	LHD, LHU, SHD, SHU
F-6	1	K	16977-ZV5-A00	FITTING, QUICK DISCONNECT.....	-	(1)	(1)	(1)		
	2	K	17500-ZV4-A26	TANK ASSY., FUEL.....	-	(1)	(1)	(1)	-----	LHD, LHND, LHNH, LHNK, SHD, SHND, SHNH, SHNK
		K	17500-ZV4-G01	-	-	(1)	(1)	-----	LHNU, LHU, SHNU, SHU
	3	K	17580-ZZ5-003	FILTER KIT, FUEL.....	-	(1)	(1)	(1)		
	4	K	17620-ZV4-003	CAP COMP., FUEL FILLER.....	-	(1)	(1)	(1)		
	5	K	17624-ZV5-902	PACKING, FUEL CAP.....	-	(1)	(1)	(1)		
	6	K	17650-ZW9-023	CONNECTOR ASSY., FUEL(A).....	-	(1)	(1)	(1)		

NOTE A:PART NO. CHANGE D:NEWLY PROVIDED E:PART NO. DELETION K:REQUIRED NO. CORRECTION L:APPLICATION SERIAL NO. CORRECTION
M:PART DESCRIPTION CORRECTION T:APPLICATION CORRECTION Z:REMARKS CHANGE

PARTS CATALOGUE NEWS

BOOKNo. :13ZVBG01

Block No.	Ref. No.	Note	Part No.	Description	Reqd. QTY				Serial No.	Parts catalogue code
					BF 4 AH	BF 4.9 DH	BF 5 DH	BF 6 AH		
	7	K	17660-ZW9-003	CONNECTOR COMP., FUEL.....	-	(1)	(1)	(1)		
	8	K	17661-921-010	BULB, PRIMER.....	-	(1)	(1)	(1)		
	9	K	17665-ZV5-000	VALVE COMP., IN.....	-	(1)	(1)	(1)		
	10	K	17680-ZV4-000	VALVE COMP., OUTLET.....	-	(1)	(1)	(1)		
	11	K	17700-ZW9-030	TUBE ASSY., FUEL.....	-	(1)	(1)	(1)		
	12	K	17701-ZV5-000	TUBE, FUEL LONG (7.3X2000).....	-	(1)	(1)	(1)		
	13	K	17702-ZV4-000	TUBE, FUEL SHORT (6.3X500).....	-	(1)	(1)	(1)		
	14	K	17703-921-010	BAND, TUBE CLIP, 20MM.....	-	(2)	(2)	(2)		
	15	K	17704-ZV4-010	BAND, TUBE CLIP, 12.5MM.....	-	(4)	(4)	(4)		
	16	K	17742-ZZ5-003	PACKING, FUEL PICK UP.....	-	(1)	(1)	(1)		
	17	K	17743-ZZ5-003	BOLT-WASHER, 5MM(SEAL).....	-	(4)	(4)	(4)		
F-8	4	E	63100-ZVD-000ZA	*PART NO. DELETION						
		D	63100-ZVD-010ZA	COVER COMP., ENGINE *NHB14M* AQUA MARINE SILVER METALLIC	1	1	1	1		
F-11	27	E	90512-ZVD-000	*PART NO. DELETION						
	31	D	94001-06490-OS	NUT, HEX., 6MM.....	1	1	1	1		
		E	94002-06490-OS	*PART NO. DELETION						

NOTE A:PART NO. CHANGE D:NEWLY PROVIDED E:PART NO. DELETION K:REQUIRED NO. CORRECTION L:APPLICATION SERIAL NO. CORRECTION
M:PART DESCRIPTION CORRECTION T:APPLICATION CORRECTION Z:REMARKS CHANGE



PARTS CATALOGUE NEWS

Service Technology Department, Power Products Operations
Service Division, Honda Motor Co., Ltd.

PARTS CATALOGUE - CORRECTED

Printed in Japan

CODE NO.	13ZVBG01
PARTS CATALOGUE NEWS	BF4AH BF4.9DH BF5DH BF6AH
NEWS NO.	002

Block No.	Ref. No.	Note	Part No.	Description	Reqd. QTY				Serial No.	Parts catalogue code
					BF 4 AH	BF 4.9 DH	BF 5 DH	BF 6 AH		
F-3	20	A	90113-ZVA-000	BOLT, FLANGE, 6X16.....	3	-	-	-	1000025	-----
					-	3	-	-	1000911	-----
					-	-	3	-	1000020	-----
					-	-	-	3	1000048	-----
					3	-	-	-	-----	1000024
					-	3	-	-	-----	1000910
					-	-	3	-	-----	1000019
-	-	-	3	-----	1000047					
F-5	14	A	90113-ZVA-000	BOLT, FLANGE, 6X16.....	2	-	-	-	1000025	-----
					-	2	-	-	1000911	-----
					-	-	2	-	1000020	-----
					-	-	-	2	1000048	-----
					2	-	-	-	-----	1000024
					-	2	-	-	-----	1000910
					-	-	2	-	-----	1000019

NOTE A:PART NO. CHANGE D:NEWLY PROVIDED E:PART NO. DELETION K:REQUIRED NO. CORRECTION L:APPLICATION SERIAL NO. CORRECTION
M:PART DESCRIPTION CORRECTION T:APPLICATION CORRECTION Z:REMARKS CHANGE

PARTS CATALOGUE NEWS

BOOKNo. :13ZVBG01

Block No.	Ref. No.	Note	Part No.	Description	Reqd. QTY				Serial No.	Parts catalogue code
					BF 4 AH	BF 4.9 DH	BF 5 DH	BF 6 AH		
					-	-	-	2	----- 1000047	

NOTE A:PART NO. CHANGE D:NEWLY PROVIDED E:PART NO.DELETION K:REQUIRED NO. CORRECTION L:APPLICATION SERIAL NO. CORRECTION
M:PART DESCRIPTION CORRECTION T:APPLICATION CORRECTION Z:REMARKS CHANGE



PARTS CATALOGUE NEWS

Service Technology Department, Power Products Operations
 Service Division, Honda Motor Co., Ltd.

PARTS CATALOGUE - CORRECTED

Printed in Japan

CODE NO.	13ZVBG01
PARTS CATALOGUE NEWS	BF4AH BF4.9DH BF5DH BF6AH
NEWS NO.	003

Block No.	Ref. No.	Note	Part No.	Description	Reqd. QTY				Serial No.	Parts catalogue code	
					BF 4 AH	BF 4.9 DH	BF 5 DH	BF 6 AH			
E-3	10	D	91251-Z1V-003	OIL SEAL, 25X38X7 (ARA1).....	1	1	1	1			
		E	91252-888-003	*PART NO. DELETION							
F-5	11	K	58130-ZVD-003ZA	PROPELLER COMP., THREE BLADES (7-7/8X7-1/2)	(1)	(1)	(1)	(1)			
				NH283..... STIN GRAY							
		K	58130-ZVD-601ZA	PROPELLER COMP., THREE BLADES (7-7/8X6-3/4)	(1)	-	-	-			
				NH283..... STIN GRAY							
							1	1			
									1	-----	LHD, LHND, LHNH, SHD, SHND, SHNH
									(1)	-----	LHNU, LHU, SHNU, SHU
		K	58130-ZVD-701ZA	PROPELLER COMP., THREE BLADES (7-7/8X5-7/8)	1	-	-	-			
				NH283..... STIN GRAY							
						(1)	(1)	-			
							(1)		-----	LHD, LHND, LHNH, SHD, SHND, SHNH	
							1	-----	LHNU, LHU, SHNU, SHU		
F-10	15		90855-ZVD-300	RIVET, 4X22.6.....	2	-	-	-	-----	1002545	

NOTE A:PART NO. CHANGE D:NEWLY PROVIDED E:PART NO. DELETION K:REQUIRED NO. CORRECTION L:APPLICATION SERIAL NO. CORRECTION
 M:PART DESCRIPTION CORRECTION T:APPLICATION CORRECTION Z:REMARKS CHANGE

PARTS CATALOGUE NEWS

BOOKNo. :13ZVBG01

Block No.	Ref. No.	Note	Part No.	Description	Reqd. QTY				Serial No.	Parts catalogue code
					BF 4 AH	BF 4.9 DH	BF 5 DH	BF 6 AH		
					-	2	2	-	----- 1003213	
					-	-	-	2	----- 1004051	
		A	90855-ZW9-300	2	-	-	-	1002546 -----	
					-	2	2	-	1003214 -----	
					-	-	-	2	1004052 -----	

NOTE A:PART NO. CHANGE D:NEWLY PROVIDED E:PART NO. DELETION K:REQUIRED NO. CORRECTION L:APPLICATION SERIAL NO. CORRECTION
M:PART DESCRIPTION CORRECTION T:APPLICATION CORRECTION Z:REMARKS CHANGE



PARTS CATALOGUE NEWS

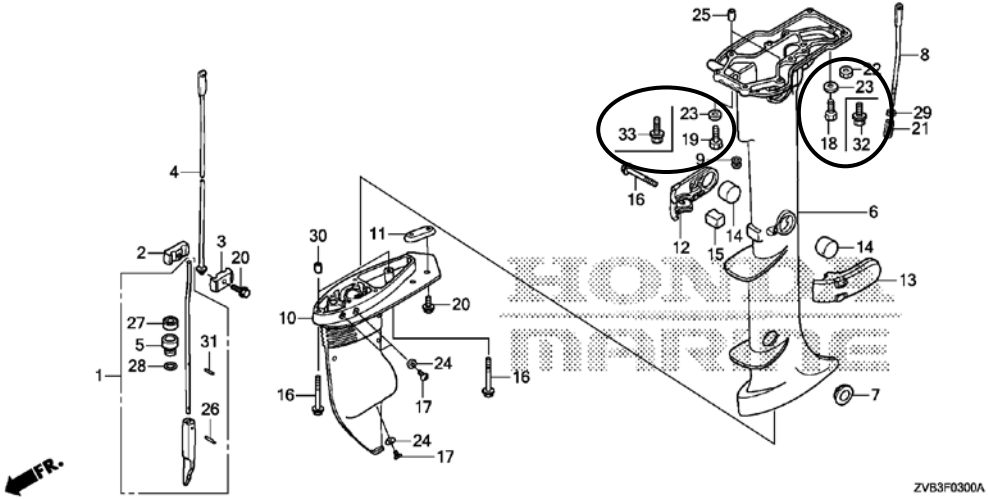
Service Information Department, Power Product Operations
 Service Division, Honda Motor Co., Ltd.

PARTS CATALOGUE - CORRECTED

CODE NO.	13ZVBG01
PARTS CATALOGUE NEWS	BF4AH BF4.9DH BF5DH BF6AH
NEWS NO.	004

Block No.	Ref. No.	Note	Part No.	Description	Reqd. QTY				Serial No.	Parts catalogue code
					BF 4 AH	BF 4.9 DH	BF 5 DH	BF 6 AH		

F-3 EXTENSION CASE/GEAR CASE



F-3	18	L	90111-881-000	BOLT, HEX., 6X32.....	7	-	-	-	-----	1003192	
					-	7	7	-	-----	1004854	LHND, LHNK, LHNU, SHD, SHND, SHNK, SHNU, SHU

NOTE A:PART NO. CHANGE D:NEWLY PROVIDED E:PART NO. DELETION K:REQUIRED NO. CORRECTION L:APPLICATION SERIAL NO. CORRECTION
 M:PART DESCRIPTION CORRECTION T:APPLICATION CORRECTION Z:REMARKS CHANGE

PARTS CATALOGUE NEWS

BOOKNo. :13ZVBG01

Block No.	Ref. No.	Note	Part No.	Description	Reqd. QTY				Serial No.	Parts catalogue code	
					BF 4 AH	BF 4.9 DH	BF 5 DH	BF 6 AH			
					-	-	7	-	-----	LHD, LHU	
					-	-	-	7	-----	1006554	
	19	L	90114-881-000	BOLT, HEX., 6X40.....	2	-	-	-	-----	1003192	
					-	2	2	-	-----	1004854	LHND, LHNK, LHNU, SHD, SHND, SHNK, SHNU, SHU
					-	-	2	-	-----	-----	LHD, LHU
					-	-	-	2	-----	1006554	
	23	L	90506-ZVD-000	WASHER, PLAIN, 6MM.....	9	-	-	-	-----	1003192	
					-	9	9	-	-----	1004854	LHND, LHNK, LHNU, SHD, SHND, SHNK, SHNU, SHU
					-	-	9	-	-----	-----	LHD, LHU
					-	-	-	9	-----	1006554	
	32	D	90111-ZVD-000	BOLT-WASHER, 6X32.....	7	-	-	-	-----	1003193	
					-	7	7	-	-----	1004855	LHND, LHNK, LHNU, SHD, SHND, SHNK, SHNU, SHU
					-	-	-	7	-----	1006555	
	33	D	90114-ZVD-000	BOLT-WASHER, 6X40.....	2	-	-	-	-----	1003193	
					-	2	2	-	-----	1004855	LHND, LHNK, LHNU, SHD, SHND, SHNK, SHNU, SHU
					-	-	-	2	-----	1006555	

NOTE A:PART NO. CHANGE D:NEWLY PROVIDED E:PART NO. DELETION K:REQUIRED NO. CORRECTION L:APPLICATION SERIAL NO. CORRECTION
M:PART DESCRIPTION CORRECTION T:APPLICATION CORRECTION Z:REMARKS CHANGE



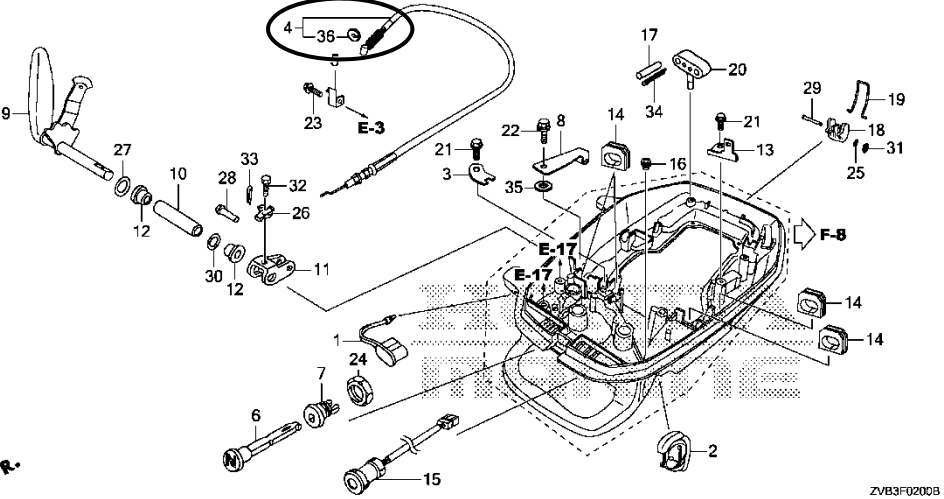
PARTS CATALOGUE NEWS

PARTS CATALOGUE - CORRECTED

CODE NO.	13ZVBG01
PARTS CATALOGUE NEWS	BF4AH BF4.9DH BF5DH BF6AH
NEWS NO.	005

Block No.	Ref. No.	Note	Part No.	Description	Reqd. QTY				Serial No.	Parts catalogue code
					BF 4 AH	BF 4.9 DH	BF 5 DH	BF 6 AH		

F-2 SHIFT SHAFT/COVER LOCK LEVER



F-2	4	E	17940-ZVD-003	*PART NO. DELETION						
		D	17940-ZVD-013	CABLE COMP., NEUTRAL STARTING.	1	1	1	1		
	36	D	17941-ZVD-003	WASHER.....	1	1	1	1		

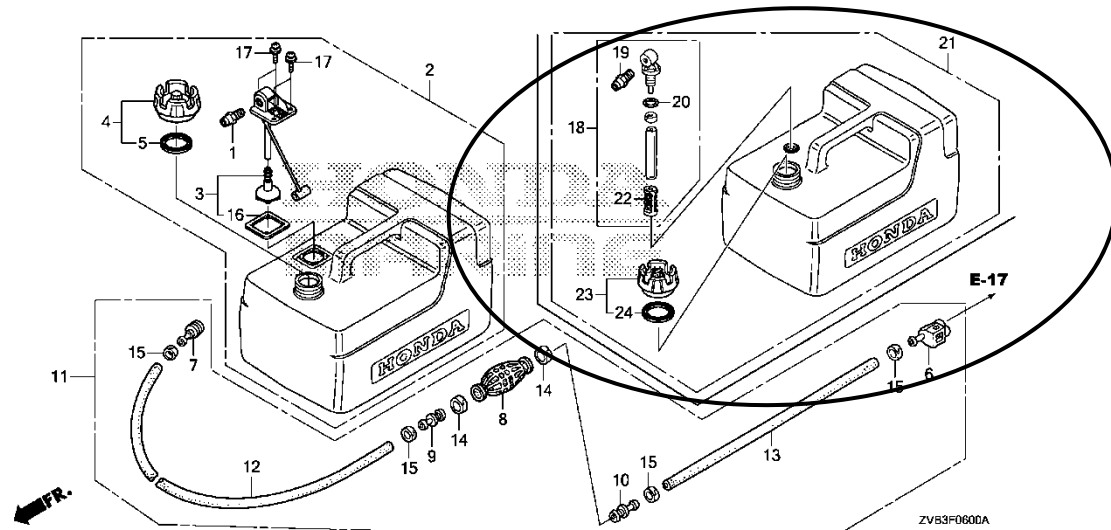
NOTE A:PART NO. CHANGE D:NEWLY PROVIDED E:PART NO. DELETION K:REQUIRED NO. CORRECTION L:APPLICATION SERIAL NO. CORRECTION
M:PART DESCRIPTION CORRECTION T:APPLICATION CORRECTION Z:REMARKS CHANGE

PARTS CATALOGUE NEWS

BOOKNo. : 13ZVBG01

Block No.	Ref. No.	Note	Part No.	Description	Reqd. QTY				Serial No.	Parts catalogue code
					BF 4 AH	BF 4.9 DH	BF 5 DH	BF 6 AH		
F-3	11	E	41106-ZV4-650	*PART NO. DELETION						
		D	41106-ZVA-000	METAL, ANODE.....	1	1	1	1		
	20	E	90215-HW1-671	*PART NO. DELETION						
		T	90113-ZVA-000	BOLT, FLANGE, 6X16.....	3	3	3	3		
F-5	14	E	90215-HW1-671	*PART NO. DELETION						
		T	90113-ZVA-000	BOLT, FLANGE, 6X16.....	2	2	2	2		

F-6 FUEL TANK



F-6	18	D	16900-ZV4-A22	JOINT ASSY., FUEL.....	-	(1)	(1)	(1)		
	19	D	16977-ZV5-A00	FITTING, QUICK DISCONNECT....	-	(1)	(1)	(1)		
	20	D	16979-ZV5-901	O-RING.....	-	(1)	(1)	(1)		
	21	D	17500-ZV4-A27	TANK ASSY., FUEL.....	-	(1)	(1)	(1)	-----	LHD, LHND, LHNH, LHNK, SHD, SHND, SHNH, SHNK
		D	17500-ZV4-G02	-	-	(1)	(1)	-----	LHNU, LHU, SHNU, SHU
22	D	17583-ZV5-901	FILTER, FUEL.....	-	(1)	(1)	(1)			

NOTE A:PART NO. CHANGE D:NEWLY PROVIDED E:PART NO. DELETION K:REQUIRED NO. CORRECTION L:APPLICATION SERIAL NO. CORRECTION
M:PART DESCRIPTION CORRECTION T:APPLICATION CORRECTION Z:REMARKS CHANGE

PARTS CATALOGUE NEWS

BOOKNo. : 13ZVBG01

Block No.	Ref. No.	Note	Part No.	Description	Reqd. QTY				Serial No.	Parts catalogue code
					BF 4 AH	BF 4.9 DH	BF 5 DH	BF 6 AH		
	23	D	17620-ZV4-003	CAP COMP., FUEL FILLER.....	-	(1)	(1)	(1)		
	24	D	17624-ZV5-902	PACKING, FUEL CAP.....	-	(1)	(1)	(1)		

NOTE A:PART NO. CHANGE D:NEWLY PROVIDED E:PART NO.DELETION K:REQUIRED NO. CORRECTION L:APPLICATION SERIAL NO. CORRECTION
M:PART DESCRIPTION CORRECTION T:APPLICATION CORRECTION Z:REMARKS CHANGE