



PARTS CATALOGUE

T50-2012 (6C28)

T60-2012 (6C68)

FT60DET'12 (6C68)

T50
T60/FT60DET
PARTS CATALOGUE
©2011 by Yamaha Motor Co., Ltd.
1st edition, June 2011
All rights reserved.
Any reprinting or unauthorized use
without the written permission of
Yamaha Motor Co., Ltd.
is expressly prohibited.
Printed in Japan.

FOREWORD

This Parts Catalogue is related to the parts for the model(s) on the cover page. When you are ordering replacement parts, please refer to this Parts Catalogue and quote both part numbers and part names correctly.

1. Modifications or additions which have been made after the issue of the Parts Catalogue will be announced in the Parts News.
It is advisable that you make the necessary corrections to the Parts Catalogue according to the Parts News.

2. Abbreviations

The following abbreviations are used in this Parts Catalogue.

“UR” Use specified parts number.

“UN” Use as many as needed.

“AP” Alternate Parts

“LM” Locally Made (Parts need to be ordered locally)

“F#” Frame No. (Applicable machine No.)

“O/S” Over Size

3. The number of components for assembly

- Parts, which are to be supplied in an assembly, are listed with a dot (.) in front of the part name as shown below.
- The numeral appearing to the right of each component part indicates the quantity of parts for each assembly unit.

PART NO.	DESCRIPTION	Q'TY	REMARKS
2F5-83310-60	FRONT FLASHER LIGHT ASSY	2	
115-83311-60	.BULB (6V-18W)	1	

4. Applicable colours of graphics are represented in the “REMARKS” as shown below.

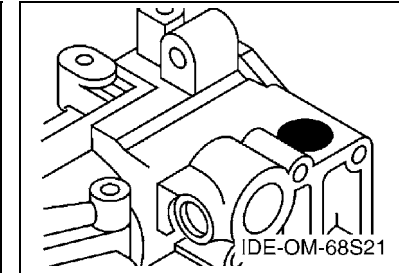
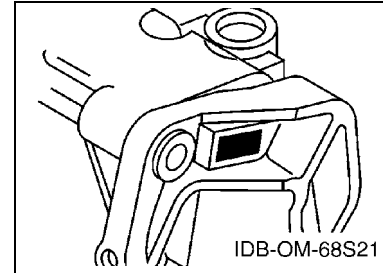
PART NO.	DESCRIPTION	Q'TY	REMARKS
2N4-24110-00-X5	FUEL TANK COMP.	2	MXR
3J1-24240-10	.GRAPHIC, FUEL TANK	1	FOR MXR

5. Note that the illustrations for reference in finding parts numbers are not to be used for assembling. When assembling, please use the applicable service manual.

6. The asterisk (*) before a reference number indicates modified items after the first edition.

7. Applicable Serial No.

Engine Serial No.



8. Applicable Engine Starting Serial No.

Model	Serial No.	Model	Serial No.
T50	6C2-1012253	T60	6C6-1018352
FT60D	6C6-1018352		

9. Applicable Colour Code

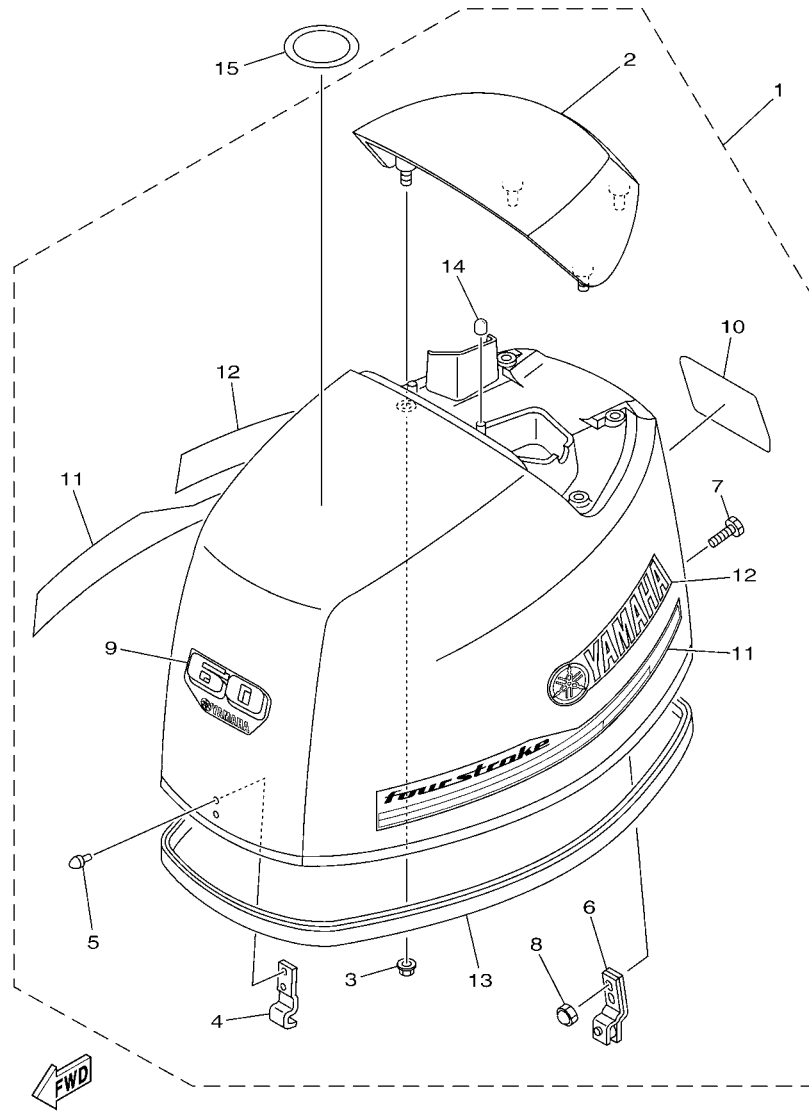
Abbreviation	Colour Name	Colour Code
DBN1	DARK BLUISH GRAY 1	008D

10. Quantity Column Information

Column No.	Name Of Q'ty Column	Applicable Model
1	6C28	T50A
2	6C68	T60A, FT60DET

CONTENTS

TOP COWLING	1
CYLINDER & CRANKCASE 1	2
CRANKSHAFT & PISTON	4
CYLINDER & CRANKCASE 2	5
VALVE	7
INTAKE 1	8
INTAKE 2	9
FUEL INJECTION PUMP 1	10
FUEL INJECTION PUMP 2	12
OIL PUMP	14
FUEL 1	15
FUEL 2	17
GENERATOR	18
ELECTRICAL 1	19
ELECTRICAL 2	20
ELECTRICAL 3	22
ELECTRICAL 4	24
STARTING MOTOR	25
BOTTOM COWLING 1	26
BOTTOM COWLING 2	28
CONTROL	29
BRACKET 1	31
BRACKET 2	33
POWER TRIM & TILT ASSY 1	35
POWER TRIM & TILT ASSY 2	38
UPPER CASING	39
OIL PAN	41
LOWER CASING & DRIVE 1	42
LOWER CASING & DRIVE 2	45
FUEL TANK	46
STEERING GUIDE	47
REMOTE CONTROL BOX	48
REMOTE CONTROL ASSY	49
METER	52
OPTIONAL PARTS	53
REPAIR KIT 1	54
REPAIR KIT 2	55
INDEX	
NUMERICAL INDEX	57



6C18100-L010

FIG. 1 TOP COWLING

REF. NO.	PART NO.	DESCRIPTION	6C28	6C68			REMARKS
1	6C2-42610-20	TOP COWLING ASSY	1				
	6C6-42610-20	TOP COWLING ASSY		1			
2	67C-42613-00-8D	.MOLDING, AIR DUCT	1	1			
3	90179-06029	.NUT	4	4			
4	6C5-42651-00	.HOOK	1	1			
5	90266-06M02	.RIVET	2	2			
6	67C-42652-02	.HOOK	1	1			
7	90109-06047	.BOLT	2	2			
8	90185-06M05	.NUT, SELF-LOCKING	2	2			
9	60A-42677-00	.GRAPHIC, FRONT	1				
	6C5-42677-10	.GRAPHIC, FRONT		1			
10	61S-42678-10	.GRAPHIC, REAR	1				
	6C6-42678-20	.GRAPHIC, REAR		1			
11	61S-W0070-00	.GRAPHIC SET	1	1			
12	61S-42681-00	.MARK, COWLING	2	2			
13	6C5-42615-00	.SEAL	1	1			
14	69W-13448-00	.CAP	2	2			
15	67F-13434-20	LABEL, CAUTION	1	1			

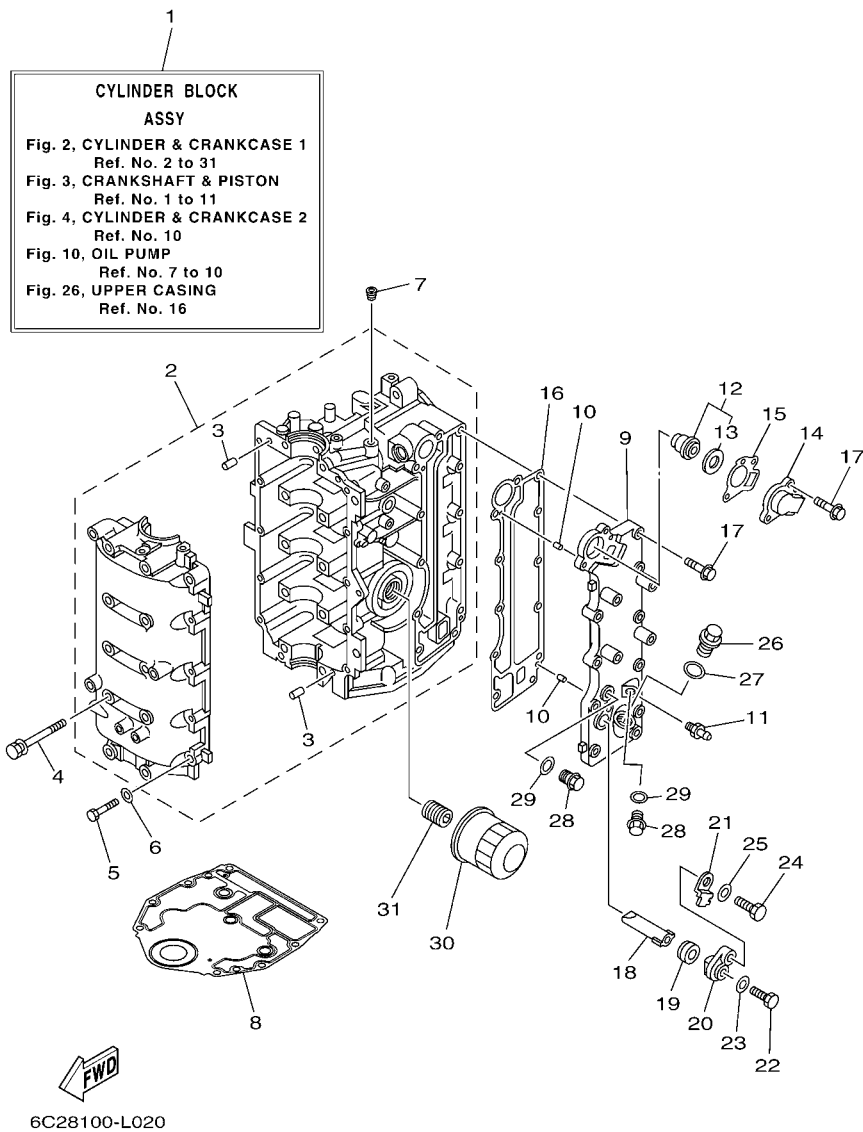


FIG. 2 CYLINDER & CRANKCASE 1

REF. NO.	PART NO.	DESCRIPTION	6C28	6C68		REMARKS
1	6C5-W009B-04-9S	CYLINDER BLOCK ASSY	1	1		
2	6C5-15100-11	CRANKCASE ASSY	1	1		
3	93606-12019	.PIN, DOWEL	4	4		
4	90119-08154	BOLT, WITH WASHER	10	10		
5	97013-06035	BOLT	10	10		
6	92903-06600	WASHER, PLATE	10	10		
7	90344-51003	PLUG, TAPER SCREW	1	1		
8	6BG-11351-00	GASKET, CYLINDER	1	1		
9	6C5-41113-11-9S	OUTER COVER, EXHAUST	1	1		
10	93604-10M03	PIN, DOWEL	2	2		
11	62Y-12481-10	PIPE 1	1	1		
12	6G8-12411-03	THERMOSTAT	1	1		
13	688-12412-00	.SEAL, THERMOSTAT	1	1		
14	6C5-12413-00-9S	COVER, THERMOSTAT	1	1		
15	62Y-12414-00	GASKET, COVER	1	1		
16	6C5-41114-10	GASKET, EXHAUST OUTER COVER	1	1		
17	90119-06MA5	BOLT, WITH WASHER	12	12		
18	62Y-11325-00	ANODE	1	1		
19	66M-11328-00	GROMMET, ANODE	1	1		
20	66M-11327-00-94	COVER, ANODE	1	1		
21	66M-12535-00	PLATE	1	1		
22	97095-05012	BOLT	1	1		
23	92995-05600	WASHER	1	1		
24	97095-06020	BOLT	1	1		
25	92995-06600	WASHER	1	1		
26	90340-18M09	PLUG, STRAIGHT SCREW	1	1		
27	90430-18130	GASKET	1	1		

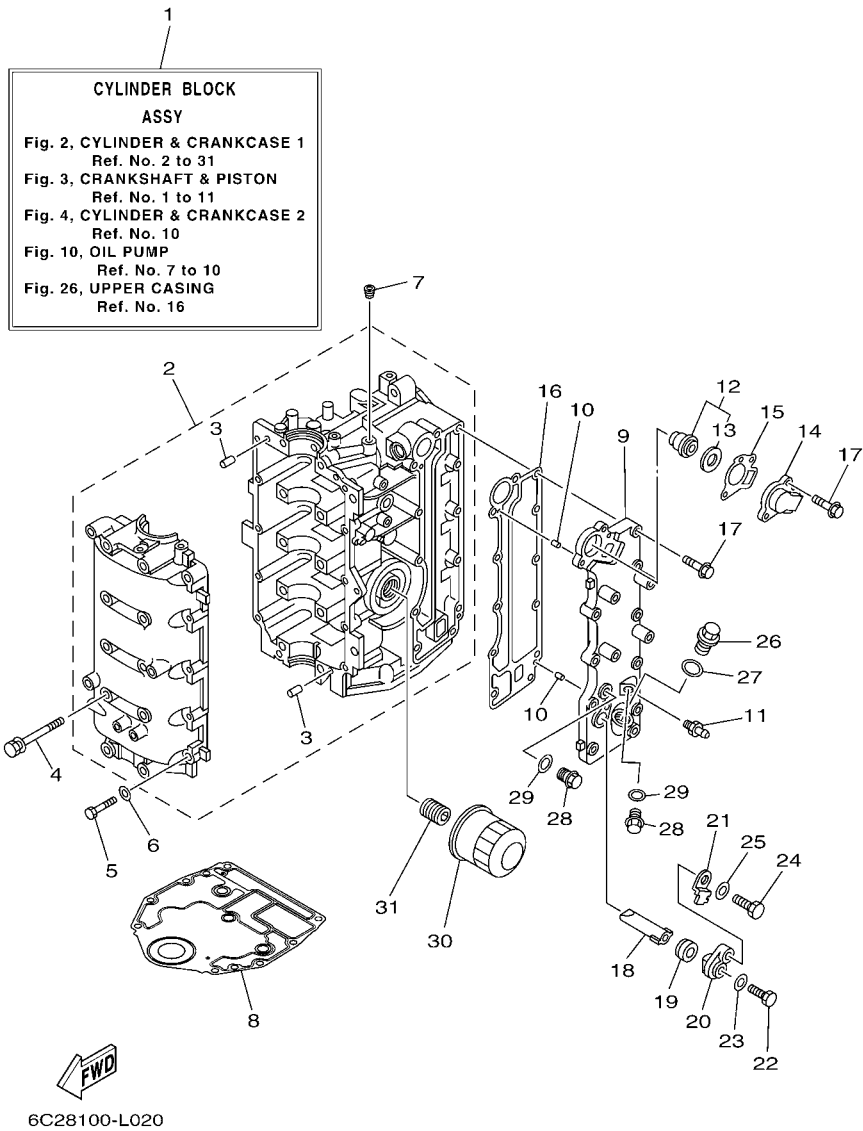
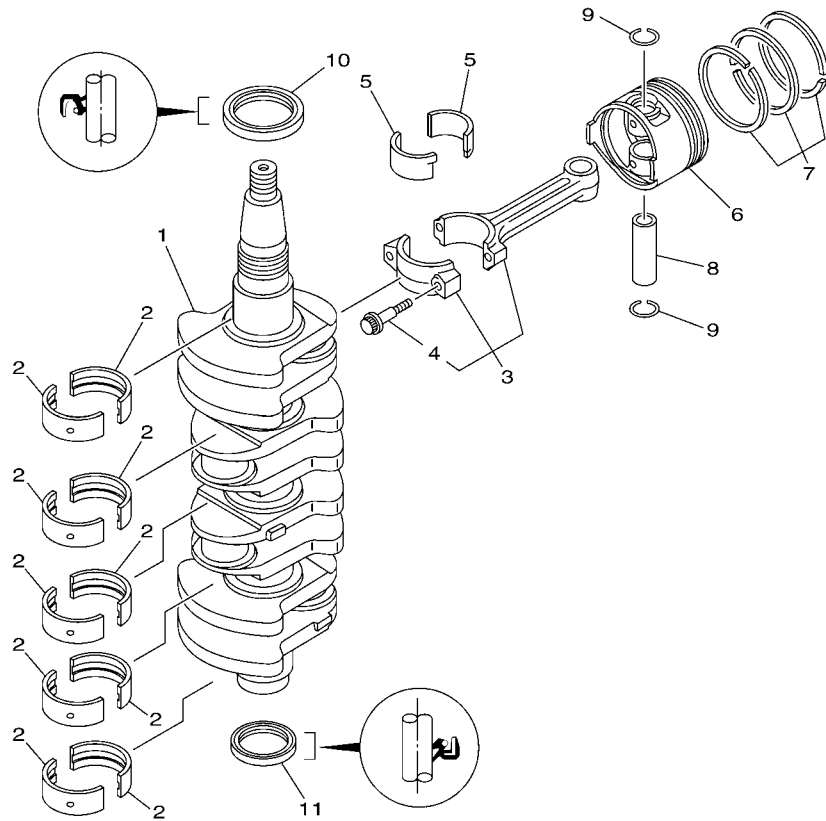


FIG. 2 CYLINDER & CRANKCASE 1

REF. NO.	PART NO.	DESCRIPTION	6C28	6C68				REMARKS
			2	2				
28	90340-14M06	PLUG, STRAIGHT SCREW	2	2				
29	90430-14115	GASKET	2	2				
30	5GH-13440-20	ELEMENT ASSY, OIL CLEANER	1	1				
31	6C5-12858-00	BOLT, UNION	1	1				



FWD
6C17110-K030

FIG. 3 CRANKSHAFT & PISTON

REF. NO.	PART NO.	DESCRIPTION	6C28	6C68			REMARKS
1	6C5-11411-01	CRANKSHAFT	1	1			
2	6BG-11416-00	PLANE BEARING, CRANKSHAFT 1	10	10			UR YELLOW
	6BG-11416-10	PLANE BEARING, CRANKSHAFT 1	10	10			UR RED
	6BG-11416-20	PLANE BEARING, CRANKSHAFT 1	10	10			UR PINK
	6BG-11416-30	PLANE BEARING, CRANKSHAFT 1	10	10			UR GREEN
3	6C5-11650-00	CONNECTING ROD ASSY	4	4			
4	6C5-11654-00	.BOLT, CONNECTING ROD	2	2			
5	6CJ-11656-00	PLANE BEARING, CONNECTING ROD	8	8			UR YELLOW
	6CJ-11656-10	PLANE BEARING, CONNECTING ROD	8	8			UR RED
	6CJ-11656-20	PLANE BEARING, CONNECTING ROD	8	8			UR PINK
	6CJ-11656-30	PLANE BEARING, CONNECTING ROD	8	8			UR GREEN
6	69W-11631-01-97	PISTON (STD)	4	4			
	69W-11635-01	PISTON (0.25MM O/S)	4	4			AP
	69W-11636-01	PISTON (0.50MM O/S)	4	4			AP
7	67C-11603-00	PISTON RING SET (STD)	4	4			
	67C-11604-00	PISTON RING SET (0.25MM O/S)	4	4			AP
	67C-11605-00	PISTON RING SET (0.50MM O/S)	4	4			AP
8	62Y-11633-00	PIN, PISTON	4	4			
9	93450-17129	CIRCLIP	8	8			
10	93102-43M42	OIL SEAL	1	1			
11	93101-35002	OIL SEAL	1	1			

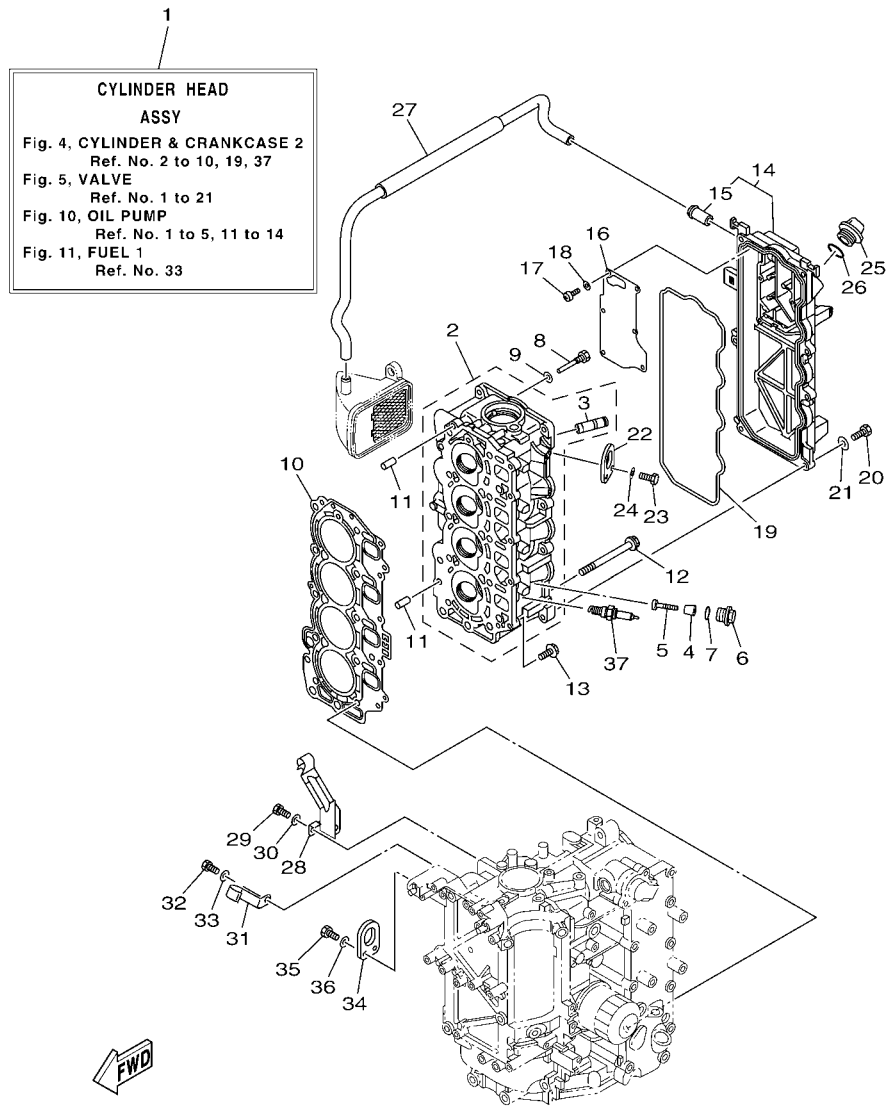


FIG. 4 CYLINDER & CRANKCASE 2

REF. NO.	PART NO.	DESCRIPTION	6C28	6C68			REMARKS
1	6C5-W009A-12-9S	CYLINDER HEAD ASSY	1	1			
2	6C5-11111-01-9S	HEAD, CYLINDER 1	1	1			
3	62Y-11133-30	.GUIDE, VALVE 1	8	8			
4	6G8-11325-00	ANODE	4	4			
5	97880-05025	SCREW, PAN HEAD	4	4			
6	6G8-11197-01	PLUG, BLIND	4	4			
7	93210-13M63	O-RING	4	4			
8	90109-06M65	BOLT	1	1			
9	90430-06014	GASKET	1	1			
10	6C5-11181-01	GASKET, CYLINDER HEAD 1	1	1			
11	99530-08012	PIN, DOWEL	2	2			
12	90105-09005	BOLT, FLANGE	10	10			
13	90119-06MA3	BOLT, WITH WASHER	5	5			
14	6C5-11191-01-9S	COVER, CYLINDER HEAD 1	1	1			
15	62Y-14485-00	.PIPE, JOINT	1	1			
16	6C5-11168-00	COVER, BREATHER	1	1			
17	98507-04010	SCREW, PAN HEAD	6	6			
18	92907-04600	WASHER	6	6			
19	62Y-11356-00	SEAL, CYLINDER 2	1	1			
20	97095-06020	BOLT	7	7			
21	92995-06600	WASHER	7	7			
22	62Y-11119-00	HANGER, ENGINE	1	1			
23	97095-06020	BOLT	2	2			
24	92995-06600	WASHER	2	2			
25	6G8-15363-00	PLUG, OIL	1	1			
26	93210-24M79	O-RING	1	1			
27	6C5-1531A-01	HOSE, BREATHER 1	1	1			

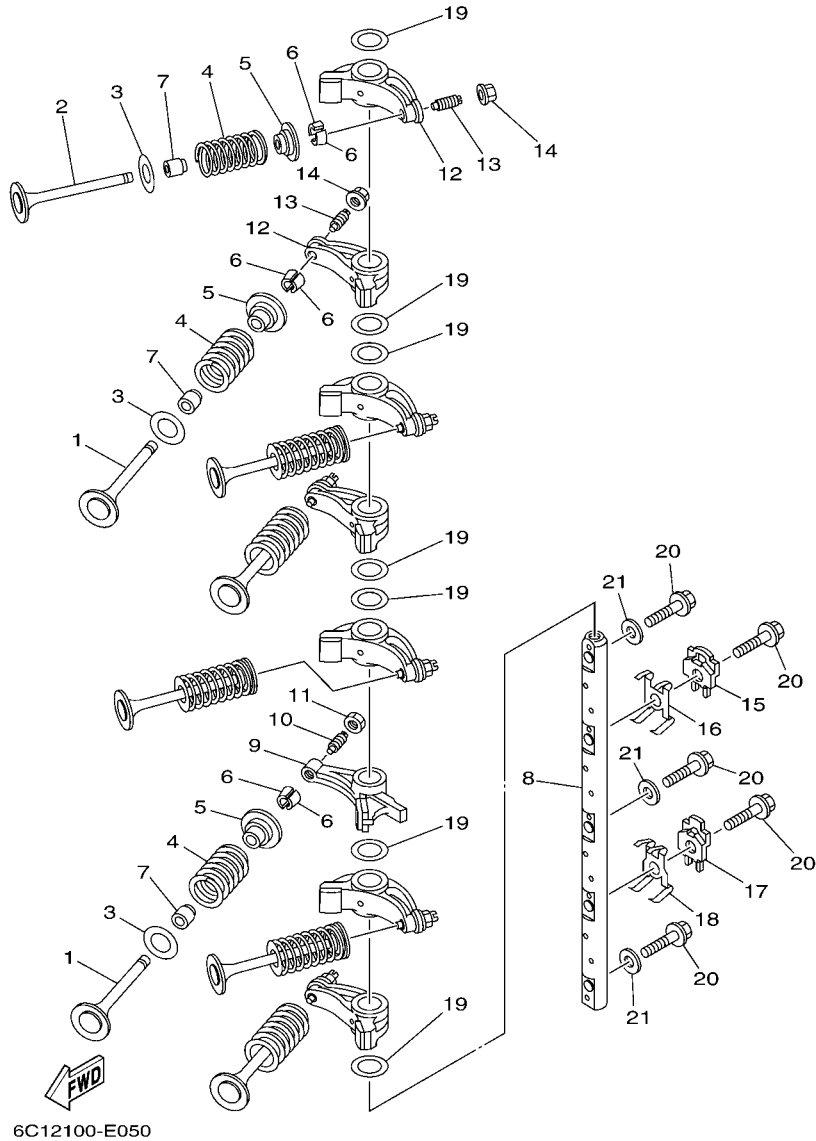


FIG. 5 VALVE

REF. NO.	PART NO.	DESCRIPTION	6C28	6C68			REMARKS
1	69W-12111-00	VALVE, INTAKE	4	4			
2	69W-12121-00	VALVE, EXHAUST	4	4			
3	62Y-12116-00	SEAT, VALVE SPRING	8	8			
4	51Y-12114-00	SPRING, VALVE OUTER	8	8			
5	30X-12117-00	RETAINER, VALVE SPRING	8	8			
6	30X-12118-00	COTTER, VALVE	16	16			
7	51Y-12119-00	SEAL, VALVE STEM	8	8			
8	6C5-12146-00	SHAFT, ROCKER	1	1			
9	62Y-12151-00	ARM, VALVE ROCKER	1	1			
10	64J-12159-00	SCREW, VALVE ADJUSTING	1	1			
11	62Y-12158-00	NUT, LOCK	1	1			
12	6C5-12151-00	ARM, VALVE ROCKER	7	7			
13	6C5-12159-00	SCREW, VALVE ADJUSTING	7	7			
14	6C5-12158-00	NUT, LOCK	7	7			
15	6C5-12231-00	GUIDE, STOPPER 1	1	1			
16	6C5-12233-00	PLATE, GUIDE STOPPER 1	1	1			
17	6C5-12241-00	GUIDE, STOPPER 2	1	1			
18	6C5-12243-00	PLATE, GUIDE STOPPER 2	1	1			
19	90201-16014	WASHER, PLATE	7	7			
20	90105-08060	BOLT, FLANGE	5	5			
21	92990-08200	WASHER, PLAIN	3	3			

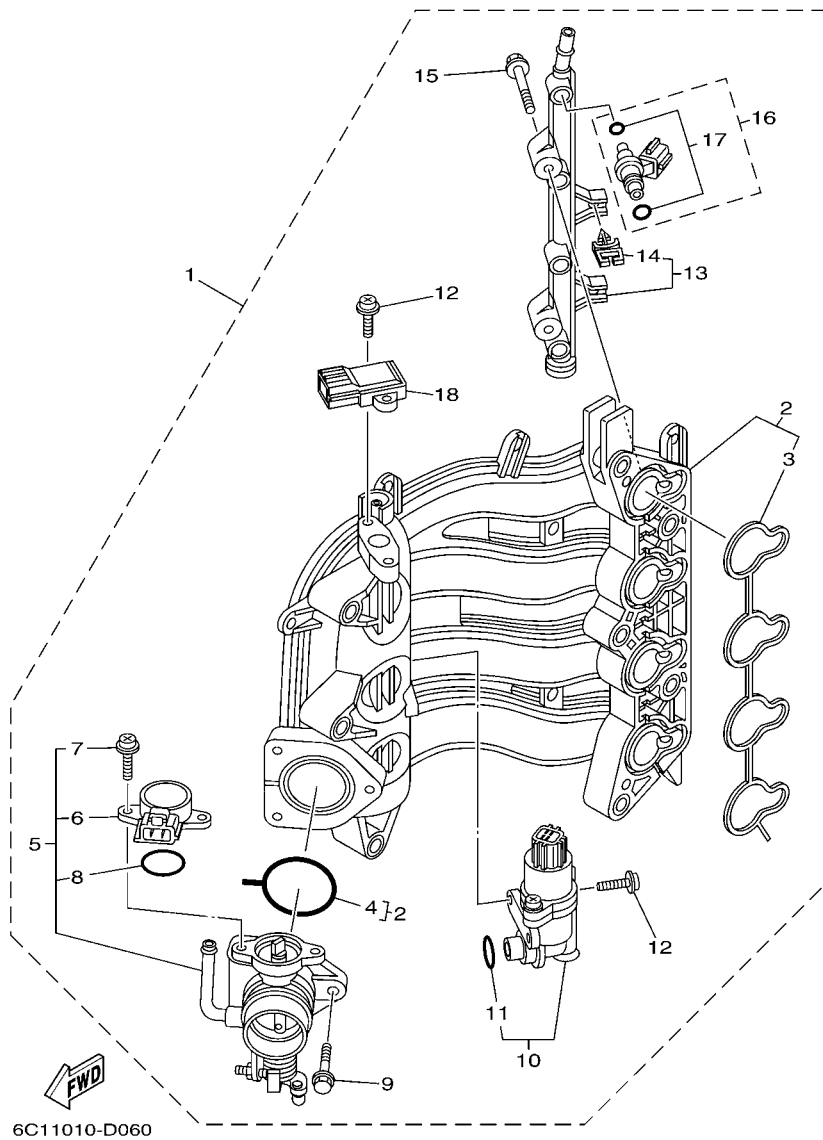


FIG. 6 INTAKE 1

REF. NO.	PART NO.	DESCRIPTION	6C28	6C68				REMARKS
			1	1				
1	6C5-14200-00	INTAKE ASSY	1	1				
2	6C5-13641-00	.MANIFOLD 1	1	1				
3	6C5-13645-10	..GASKET, MANIFOLD 1	1	1				
4	6C5-13557-10	..GASKET	1	1				
5	6C5-13750-00	.THROTTLE BODY ASSY	1	1				
6	6C5-85885-00	..THROTTLE SENSOR ASSY	1	1				
7	6C5-81145-00	..SCREW 1	2	2				
8	6C5-8182L-00	..O-RING 1	1	1				
9	6C5-14496-00	.BOLT	3	3				
10	6C5-13105-01	.CONTROL VALVE ASSY	1	1				
11	6C5-14397-00	..O-RING	1	1				
12	6C5-81146-00	.SCREW 2	4	4				
13	6C5-13161-00	.PIPE, DELIVERY 1	1	1				
14	90464-07M56	..CLAMP	2	2				
15	6C5-14446-00	.BOLT	2	2				
16	6C5-13761-00	..INJECTOR	4	4				
17	6C5-1410B-00	..PACKING KIT	1	1				
18	68F-83688-00	.SENSOR ASSY	1	1				

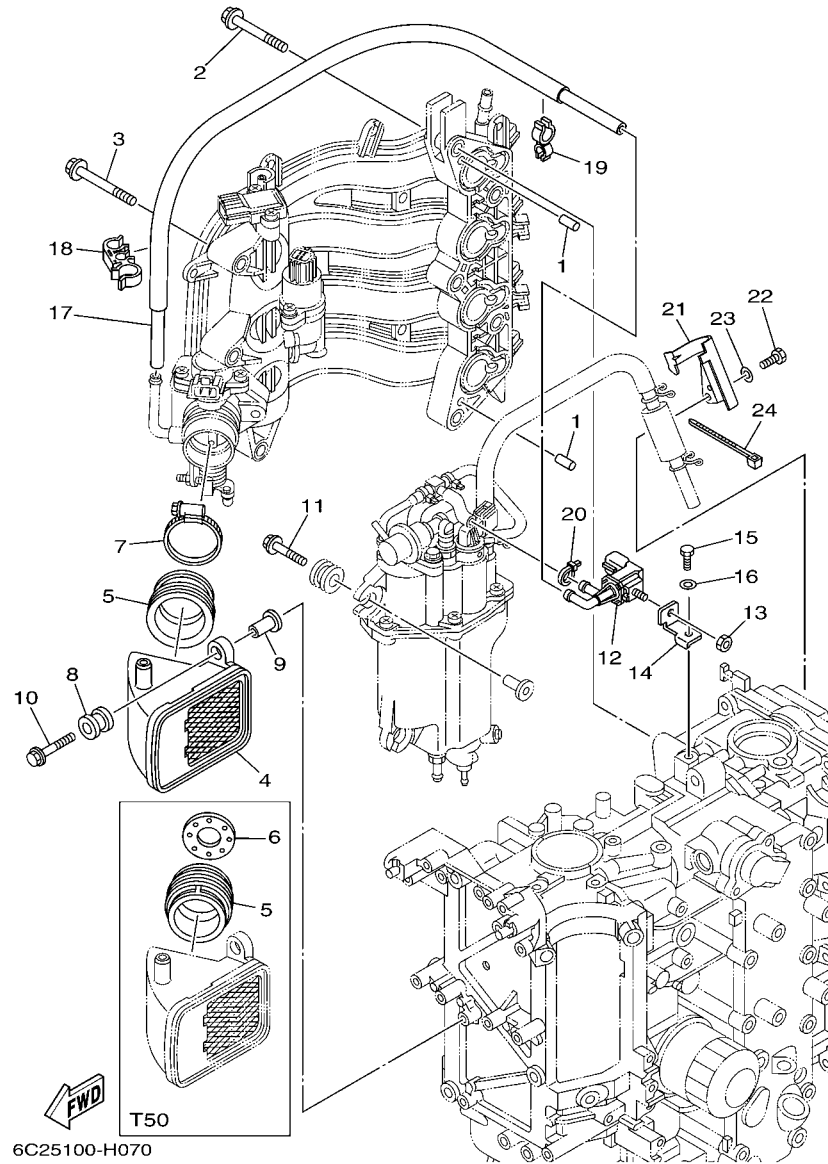


FIG. 7 INTAKE 2

REF. NO.	PART NO.	DESCRIPTION	6C28	6C88			REMARKS
1	93608-12M05	PIN, DOWEL	2	2			
2	90119-08069	BOLT, WITH WASHER	5	5			
3	90119-06087	BOLT, WITH WASHER	3	3			
4	6C5-14440-00	SILENCER ASSY, INTAKE	1	1			
5	6C1-14453-01	JOINT, AIR CLEANER 1	1				
	6C5-14453-01	JOINT, AIR CLEANER 1		1			
6	6C1-14477-00	PLATE	1				
7	90450-50001	HOSE CLAMP ASSY	1	1			
8	6A0-82317-00	DAMPER, IGNITION COIL	2	2			
9	90387-06119	COLLAR	2	2			
10	90119-06106	BOLT, WITH WASHER	2	2			
11	90119-06M61	BOLT, WITH WASHER	3	3			
12	6C5-86120-00	SOLENOID VALVE ASSY	1	1			
13	95380-06600	NUT, HEXAGON	1	1			
14	6C5-86112-00	STAY, SOLENOID	1	1			
15	97095-06016	BOLT	1	1			
16	92995-06600	WASHER	1	1			
17	6C5-12576-00	HOSE 1	1	1			
18	90464-15008	CLAMP	1	1			
19	90464-12006	CLAMP	1	1			
20	90465-11M10	CLAMP	1	1			
21	6C5-13428-01	BRACKET, STRAINER 1	1	1			
22	97095-06016	BOLT	1	1			
23	92995-06600	WASHER	1	1			
24	90465-13M18	CLAMP	1	1			

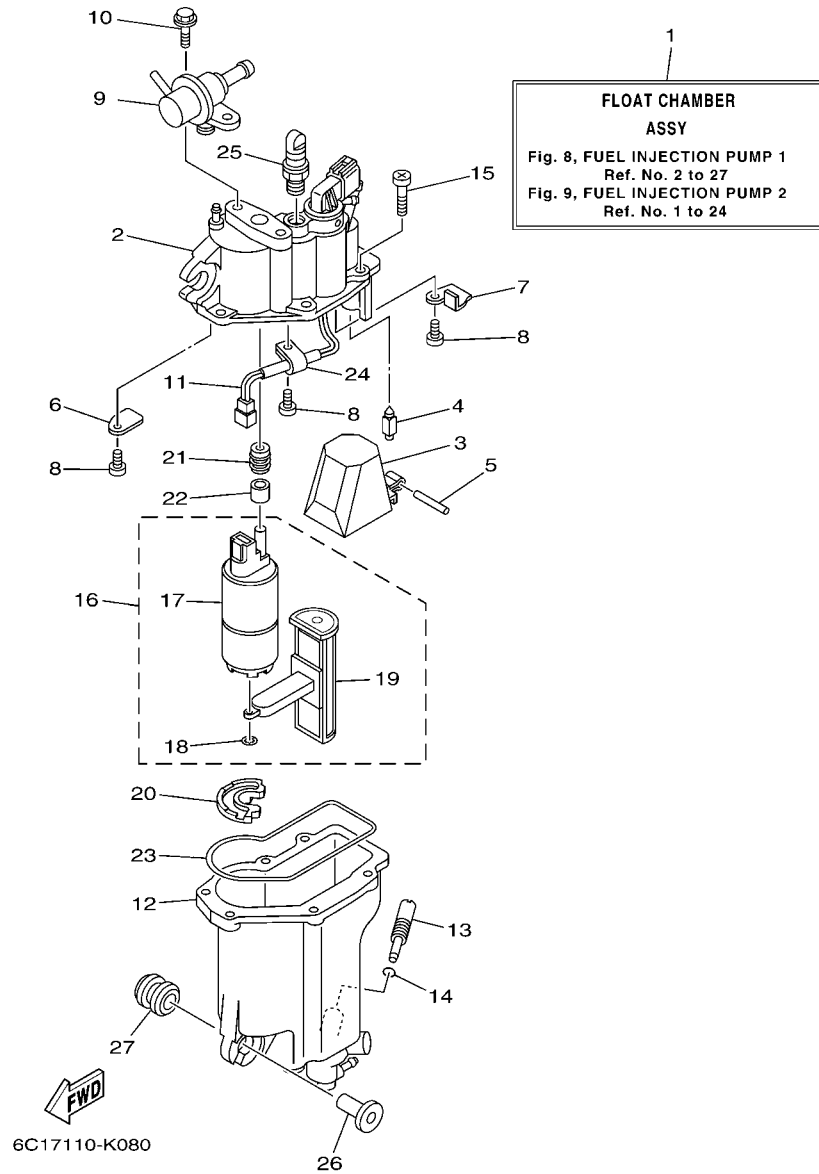


FIG. 8 FUEL INJECTION PUMP 1

REF. NO.	PART NO.	DESCRIPTION	6C28	6C68	REMARKS
1	6C5-14180-01	FLOAT CHAMBER ASSY		1	FOR OCE,CAR
	6C5-14180-20	FLOAT CHAMBER ASSY	1	1	FOR CAN
2	6C5-14182-10	COVER, FLOAT CHAMBER	1	1	
3	6C5-14985-00	FLOAT	1	1	
4	6C5-14546-10	VALVE, NEEDLE	1	1	

5	6C5-14386-00	PIN, FLOAT	1	1	
6	6C5-2441R-10	PLATE, BAFFLE 1	1	1	
7	6C5-2441T-10	PLATE, BAFFLE 2	1	1	
8	6C5-24453-00	SCREW	3	3	
9	6C5-13906-01	REGULATOR, PRESSURE	1	1	

10	6C5-24592-00	BOLT	2	2	
11	6C5-87226-00	WIRE HARNESS ASSY	1	1	
12	6C5-14960-10	BODY ASSY	1	1	
13	6C5-14191-00	PLUG, DRAIN	1	1	
14	6C5-14397-00	O-RING	1	1	

15	6C5-14567-00	SCREW	6	6	
16	6C5-13910-10	FUEL PUMP ASSY	1	1	
17	6C5-13907-00	.FUEL PUMP COMP.	1	1	
18	6C5-14127-10	.CLIP	1	1	
19	6C5-13915-00	.FILTER	1	1	

20	6C5-13593-00	DAMPER	1	1	
21	6C5-13781-00	DAMPER, PUMP	1	1	
22	6C5-13716-00	COLLAR	1	1	
23	6C5-14984-00	GASKET, FLOAT CHAMBER	1	1	
24	6C5-21337-10	CLAMP, CABLE	1	1	

25	6C5-14225-00	CAP	1	1	

26	90387-06M69	COLLAR	3	3	

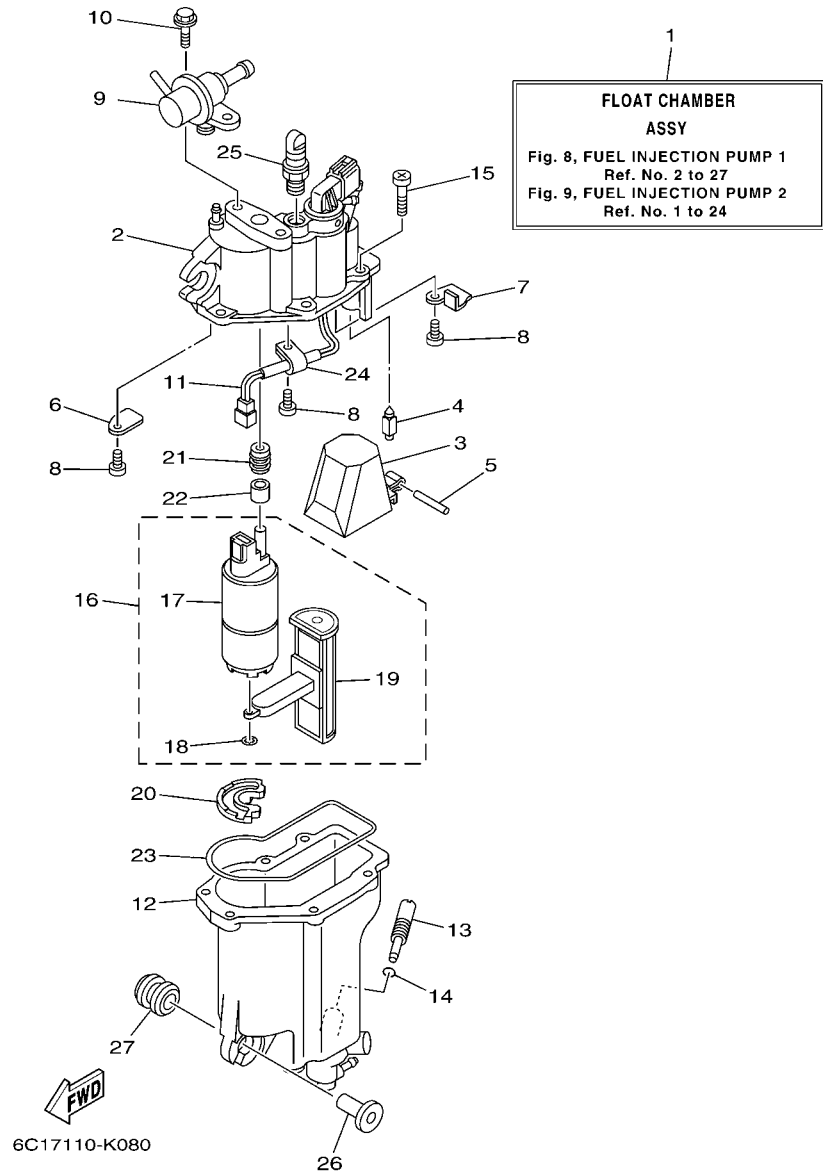
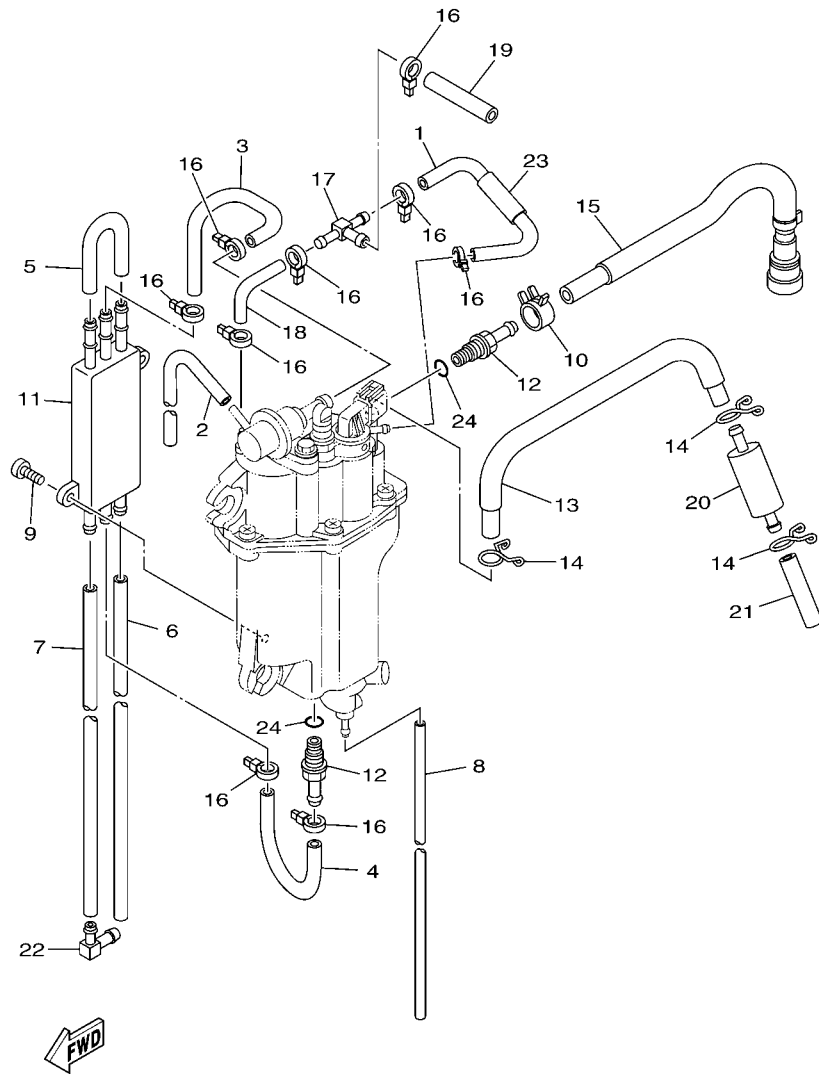


FIG. 8 FUEL INJECTION PUMP 1

REF. NO.	PART NO.	DESCRIPTION	6C28	6C68		REMARKS
27	90480-09M12	GROMMET	3	3		



6C17110-K090

FIG. 9 FUEL INJECTION PUMP 2

REF. NO.	PART NO.	DESCRIPTION	6C28	6C68			REMARKS
			1	1			
1	6C5-13546-00	HOSE 2	1	1			
2	6C5-13542-00	HOSE, VACUUM SENSING 1	1	1			
3	6C5-24321-00	PIPE 10		1			FOR OCE,CAR
	6C5-24321-20	PIPE 10	1	1			FOR CAN
4	6C5-24322-00	PIPE 11		1			FOR OCE,CAR
	6C5-24322-20	PIPE 11	1	1			FOR CAN
5	6C5-24323-00	PIPE 12	1	1			
6	6CJ-24324-00	PIPE 13	1	1			
7	6CJ-24325-00	PIPE 14	1	1			
8	6BG-14149-00	PIPE	1	1			
9	6C5-24444-00	SCREW	2	2			
10	6C5-13577-00	CLIP	1	1			
11	6C5-21841-00	COOLER	1	1			
12	6C5-14251-00	NIPPLE	2	2			
13	6C5-14148-00	PIPE		1			FOR OCE,CAR
	6C5-14148-20	PIPE	1	1			FOR CAN
14	6C5-24387-00	CLIP	3	3			
15	6C5-13974-00	PIPE, FUEL 4	1	1			
16	90465-11M10	CLAMP	9	9			
17	6C5-24379-00	PIPE, JOINT 4	1	1			
18	6C5-13545-00	HOSE 1	1	1			
19	6C5-13547-00	HOSE 3	1	1			
20	6C5-24251-00	STRAINER 1	1	1			
21	6C5-2451B-00	HOSE, FUEL INLET		1			FOR OCE,CAR
	6C5-2451B-20	HOSE, FUEL INLET	1	1			FOR CAN
22	6C5-1410F-00	CONNECTOR	1	1			
23	6C5-13548-00	HOSE, AIR 4	1	1			

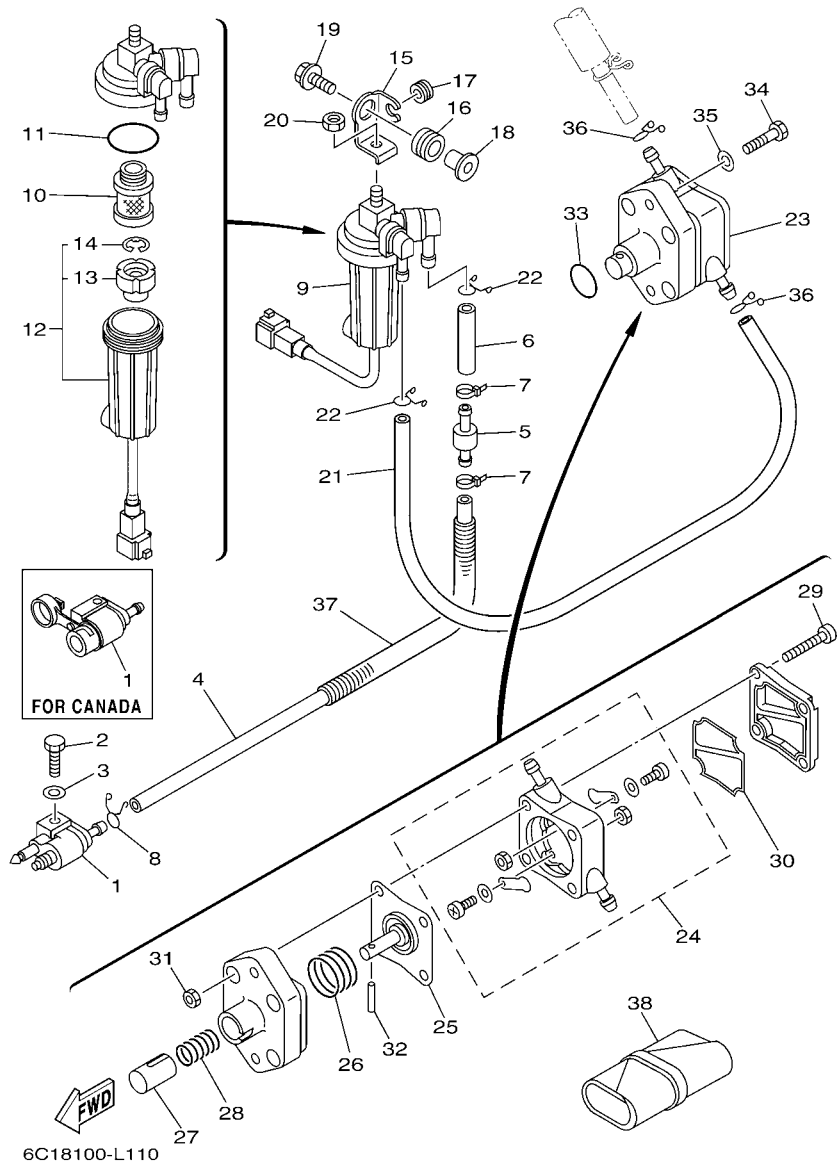


FIG. 11 FUEL 1

REF. NO.	PART NO.	DESCRIPTION	6C28	6C68	REMARKS
1	6G1-24304-02	FUEL PIPE JOINT COMP. 1		1	FOR OCE,CAR
	6YL-24304-00	FUEL PIPE JOINT COMP. 1	1	1	FOR CAN
2	97095-06025	BOLT	1	1	
3	92995-06600	WASHER	1	1	
4	6C5-2247A-00	HOSE 1		1	FOR OCE,CAR
	6C5-24313-00	PIPE 3	1	1	FOR CAN
5	67F-24377-00	PIPE, JOINT 2	1	1	
6	90445-13M02	HOSE (L40)		1	FOR OCE,CAR
	90445-13020	HOSE (L40)	1	1	FOR CAN
7	90465-11M10	CLAMP	2	2	
8	90467-09M17	CLIP	1	1	
9	6D8-24560-00	FILTER ASSY	1	1	
10	6D8-24563-00	.ELEMENT, FILTER	1	1	
11	6D8-24564-00	.GASKET	1	1	
12	6D8-24562-00	.CUP, FILTER	1	1	
13	6D8-24469-00	..FLOAT, WATER LEVEL	1	1	
14	6D8-24519-00	..CLIP	1	1	
15	6C5-24566-10	BRACKET, FILTER	1	1	
16	90480-16013	GROMMET	1	1	
17	90480-10M58	GROMMET	1	1	
18	90387-08095	COLLAR	1	1	
19	90119-08148	BOLT, WITH WASHER	1	1	
20	95380-08600	NUT	1	1	
21	90445-13M36	HOSE (L350)		1	FOR OCE,CAR
	6C5-24311-00	PIPE, FUEL 1	1	1	FOR CAN
22	90467-10M04	CLIP	2	2	
23	6C5-24410-00	FUEL PUMP ASSY	1	1	

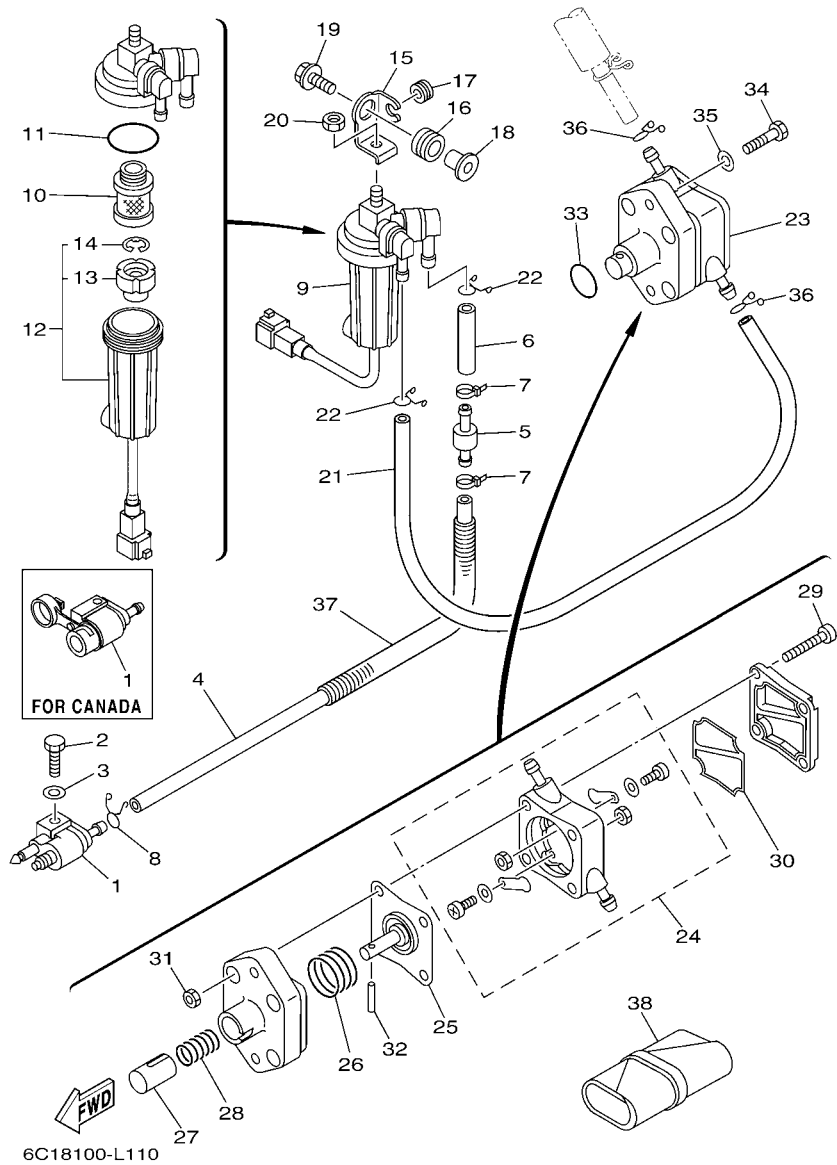


FIG. 11 FUEL 1

REF. NO.	PART NO.	DESCRIPTION	6C28	6C68	REMARKS
24	6C5-24415-00	.BODY 4	1	1	
25	62Y-24411-02	.DIAPHRAGM	1	1	
26	62Y-24423-00	.SPRING, DIAPHRAGM	1	1	
27	62Y-13131-00	.PLUNGER	1	1	
28	62Y-24454-00	.SPRING	1	1	
29	62Y-24444-01	.SCREW	4	4	
30	6C5-24471-00	.DIAPHRAGM	1	1	
31	95380-05600	.NUT	4	4	
32	62Y-24374-01	.PIN	1	1	
33	93210-24M79	O-RING	1	1	
34	97095-06030	BOLT	2	2	
35	92995-06600	WASHER	2	2	
36	90467-10M04	CLIP	2	2	
37	90446-14M62	HOSE (L320)	1		FOR OCE, CAR
38	6C5-28100-00	TOOL KIT	1	1	AP

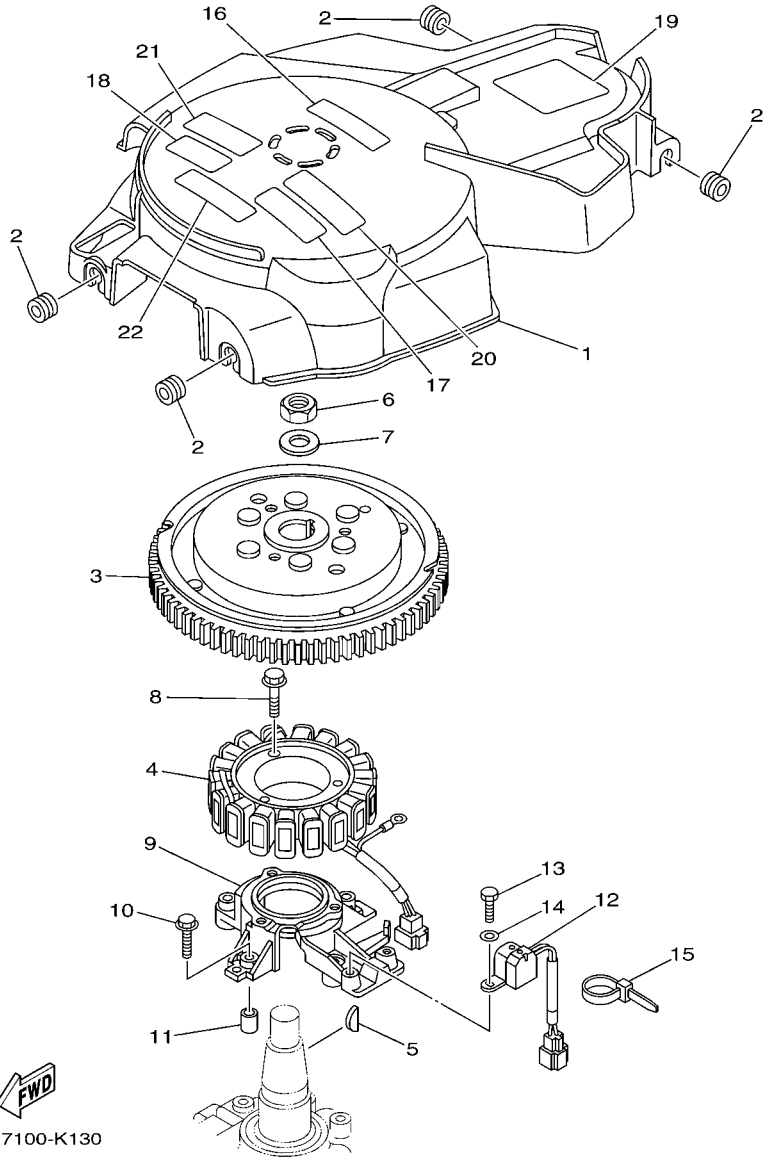


FIG. 13 GENERATOR

REF. NO.	PART NO.	DESCRIPTION	6C28	6C68		REMARKS
1	6C5-81337-00	COVER, FLYWHEEL	1	1		
2	90480-12314	GROMMET	4	4		
3	6C5-81450-00	ROTOR ASSY	1	1		
4	6C5-81410-01	STATOR ASSY	1	1		
5	6H4-11545-00	KEY, WOODRUFF	1	1		
6	90170-20137	NUT	1	1		
7	90201-21M18	WASHER, PLATE	1	1		
8	95023-06030	BOLT	3	3		
9	6C5-85561-00	BASE, MAGNETO	1	1		
10	95023-06030	BOLT	4	4		
11	99530-08012	PIN, DOWEL	2	2		
12	62Y-85580-00	COIL, PULSER	1	1		
13	97095-05012	BOLT	2	2		
14	92995-05600	WASHER	2	2		
15	90465-13M97	CLAMP	1	1		
16	6C5-13437-42	MARK, CAUTION	1	1		FOR OCE
	6C5-13437-52	MARK, CAUTION	1	1		FOR CAN
	6C5-13437-62	MARK, CAUTION	1	1		FOR CAR
17	6AH-81995-40	LABEL, WARNING	1	1		
18	6AH-81995-50	LABEL, WARNING	1	1		FOR CAN,CAR
19	62Y-83626-00	MARK 6	1	1		
20	6AH-81994-40	LABEL, SAFETY	1	1		
21	6AH-81994-50	LABEL, SAFETY	1	1		FOR CAN,CAR
22	6AG-81996-00	MARK	1	1		

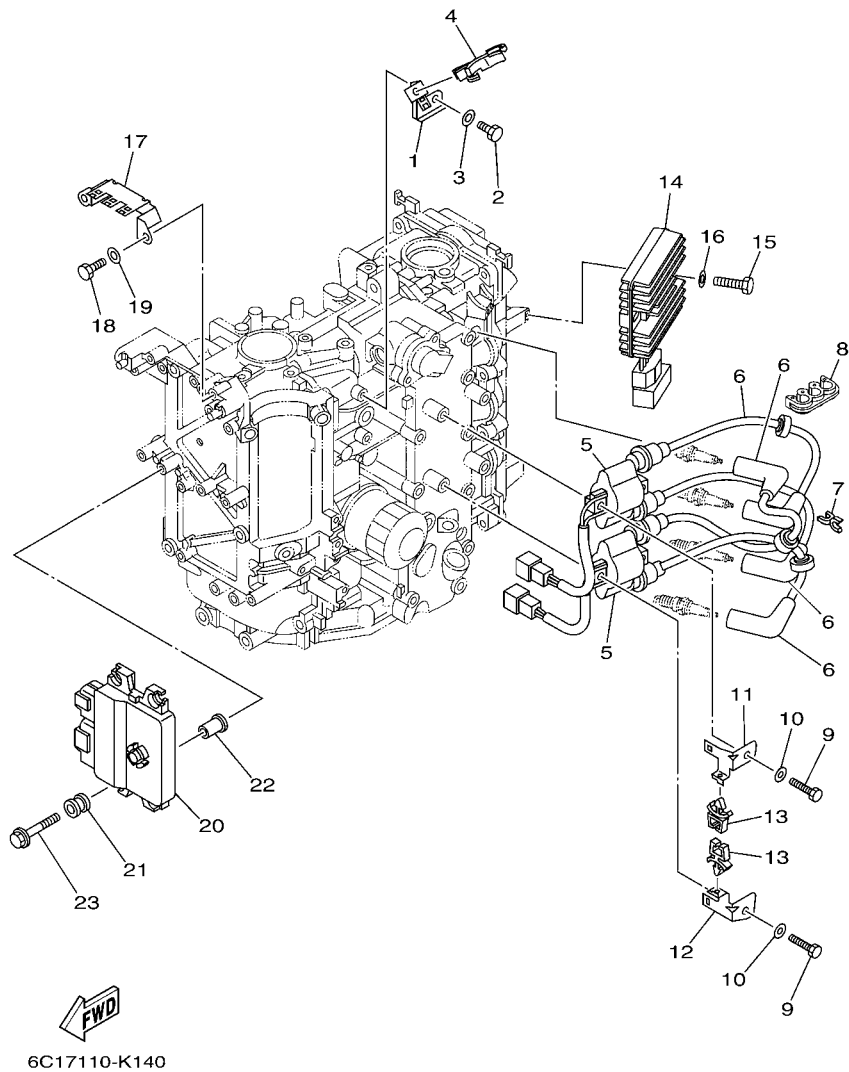


FIG. 14 ELECTRICAL 1

REF. NO.	PART NO.	DESCRIPTION	6C28	6C68			REMARKS
1	6C5-85525-00	PLATE	1	1			
2	97095-06014	BOLT	1	1			
3	92995-06600	WASHER	1	1			
4	90464-18246	CLAMP	1	1			
5	63P-82310-01	IGNITION COIL ASSY	2	2			
6	6C5-82340-01	HIGH TENSION CORD ASSY 1	4	4			
7	90464-07M41	CLAMP	2	2			
8	90464-07M05	CLAMP	1	1			
9	97095-06025	BOLT	4	4			
10	92995-06600	WASHER	4	4			
11	6C5-82316-01	BRACKET, IGNITION COIL	1	1			
12	6C5-82316-11	BRACKET, IGNITION COIL	1	1			
13	90464-06001	CLAMP	2	2			
14	68V-81960-10	RECTIFIER & REGULATOR ASSY	1	1			
15	97095-06025	BOLT	2	2			
16	92995-06600	WASHER	2	2			
17	6C5-82171-00	STAY, FUSE BOX	1	1			
18	97095-06014	BOLT	2	2			
19	92995-06600	WASHER	2	2			
20	6C1-8591A-32	ENGINE CONTROL UNIT ASSY	1				
	6C5-8591A-32	ENGINE CONTROL UNIT ASSY		1			
21	6C5-82317-00	DAMPER, IGNITION COIL	4	4			
22	90387-06119	COLLAR	4	4			
23	90119-06M59	BOLT, WITH WASHER	4	4			

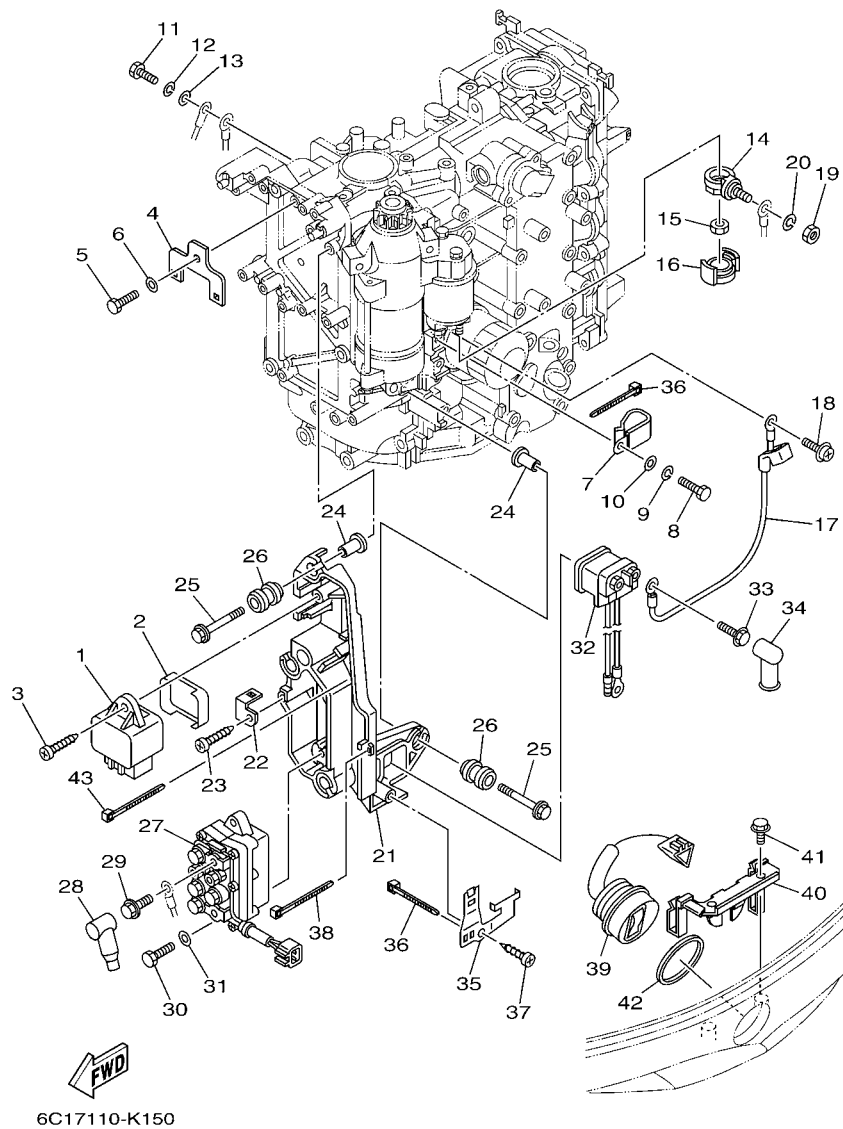
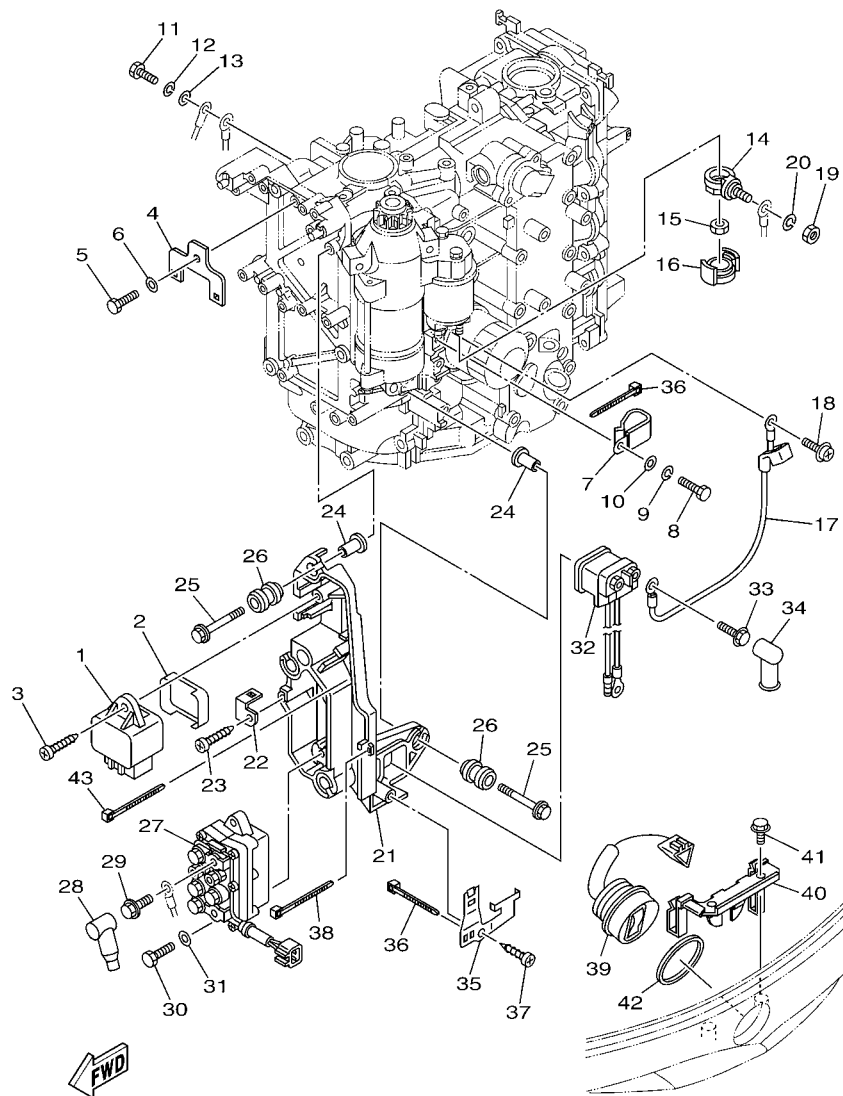


FIG. 15 ELECTRICAL 2

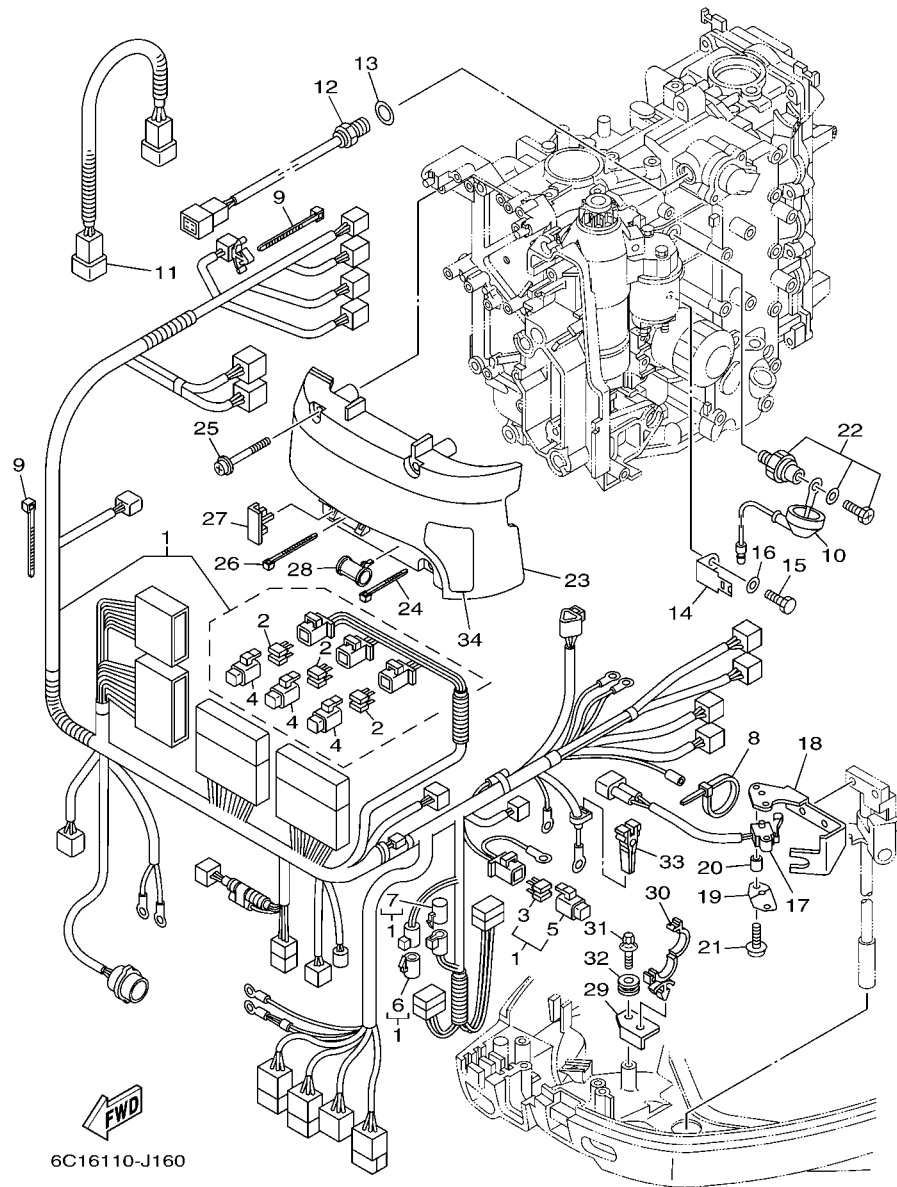
REF. NO.	PART NO.	DESCRIPTION	6C28	6C68	REMARKS
1	60E-81950-00	RELAY ASSY	1	1	
2	6C5-81336-00	GROMMET	1	1	
3	97780-60620	SCREW, TAPPING	1	1	
4	6C5-8257V-00	PLATE, CONNECTOR	1	1	
5	97095-06014	BOLT	1	1	
6	92995-06600	WASHER	1	1	
7	90465-05M87	CLAMP	1	1	
8	97095-06020	BOLT	4	4	
9	92995-06100	WASHER, SPRING	4	4	
10	92995-06600	WASHER	4	4	
11	97095-06020	BOLT	1	1	
12	92995-06100	WASHER, SPRING	1	1	
13	92995-06600	WASHER	1	1	
14	60V-81925-00	TERMINAL	1	1	
15	90179-08003	NUT	1	1	
16	68F-82582-00	COVER, WIRE HARNESS	1	1	
17	6C5-81815-00	CORD, STARTER MOTOR	1	1	
18	90159-04005	SCREW, WITH WASHER	1	1	
19	95333-08600	NUT	1	1	
20	92903-08100	WASHER, SPRING	1	1	
21	6C5-81948-00	BRACKET	1	1	
22	6C5-85548-00	HOLDER	1	1	
23	97780-60620	SCREW, TAPPING	1	1	
24	90387-06119	COLLAR	4	4	
25	90119-06M59	BOLT, WITH WASHER	4	4	
26	6A0-82317-00	DAMPER, IGNITION COIL	4	4	
27	63P-81950-00	RELAY ASSY	1	1	



6C17110-K150

FIG. 15 ELECTRICAL 2

REF. NO.	PART NO.	DESCRIPTION	6C28	6C68	REMARKS
28	682-82119-01	COVER, LEAD WIRE	2	2	
29	97595-06610	BOLT, WITH WASHER	2	2	
30	97095-06020	BOLT	2	2	
31	92995-06600	WASHER	2	2	
32	68V-8194A-00	RELAY	1	1	
33	97595-06610	BOLT, WITH WASHER	2	2	
34	6G5-82119-00	COVER, LEAD WIRE	2	2	
35	6C5-81953-00	STAY, RELAY	1	1	
36	90465-11M10	CLAMP	2	2	
37	97780-60620	SCREW, TAPPING	1	1	
38	90465-13M97	CLAMP	1	1	
39	63D-82563-10	TRIM & TILT SWITCH ASSY	1	1	
40	6C5-83614-01	BRACKET	1	1	
41	90109-06M86	BOLT	2	2	
42	6E5-82587-00	GASKET	1	1	
43	90465-13M97	CLAMP	2	2	



6C16110-J160

FIG. 16 ELECTRICAL 3

REF. NO.	PART NO.	DESCRIPTION	6C28	6C88			REMARKS
1	6C5-82590-40	WIRE HARNESS ASSY	1	1			
2	67F-82151-00	.FUSE (20A)	6	6			
3	67F-82151-10	.FUSE (30A)	2	2			
4	67F-8215B-10	.CAP (YELLOW)	3	3			
5	67F-8215B-20	.CAP (GREEN)	1	1			
6	6P2-82582-00	.CAP 1 (FEMALE)	1	1			
7	6P2-82582-10	.CAP 1 (MALE)	1	1			
8	90465-13M24	CLAMP	1	1			
9	90465-13M11	CLAMP	2	2			
10	68V-81315-00	LEAD WIRE ASSY	1	1			
11	6C5-82553-00	EXTENSION, WIRE LEAD	1	1			
12	6CJ-85790-00	THERMOSENSOR ASSY	1	1			
13	90430-14115	GASKET	1	1			
14	6C5-82388-00	PLATE	1	1			
15	97095-06014	BOLT	1	1			
16	92995-06600	WASHER	1	1			
17	60V-8259F-00	SWITCH ASSY	1	1			
18	6C5-82554-01	STAY, NEUTRAL SWITCH	1	1			
19	61A-82588-01	PLATE	1	1			
20	90387-04001	COLLAR	1	1			
21	97985-04116	SCREW, WITH WASHER	2	2			
22	64J-82504-00	OIL PRESSURE SWITCH ASSY	1	1			
23	6C5-81942-00	COVER	1	1			
24	90465-13M39	CLAMP	1	1			
25	90159-06M14	SCREW, WITH WASHER	4	4			
26	90465-13M24	CLAMP	1	1			
27	6C5-82176-00	DAMPER	2	2			

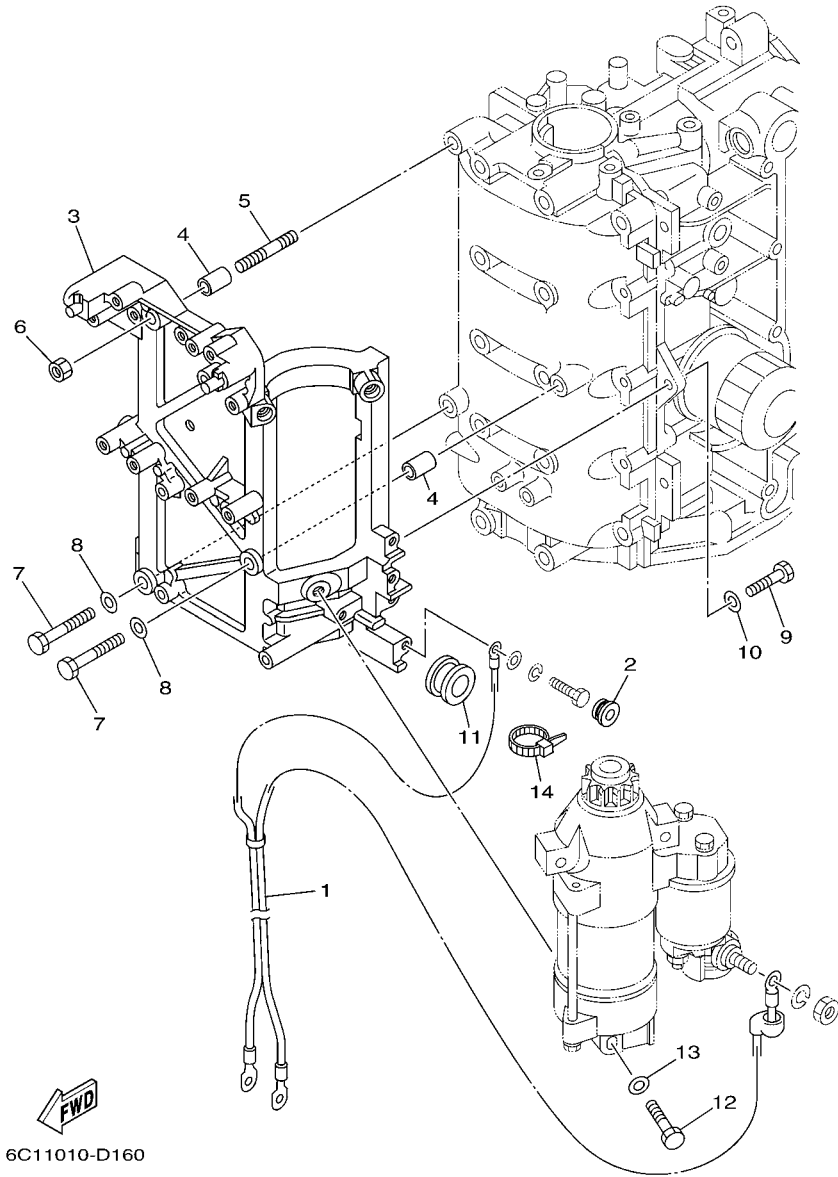
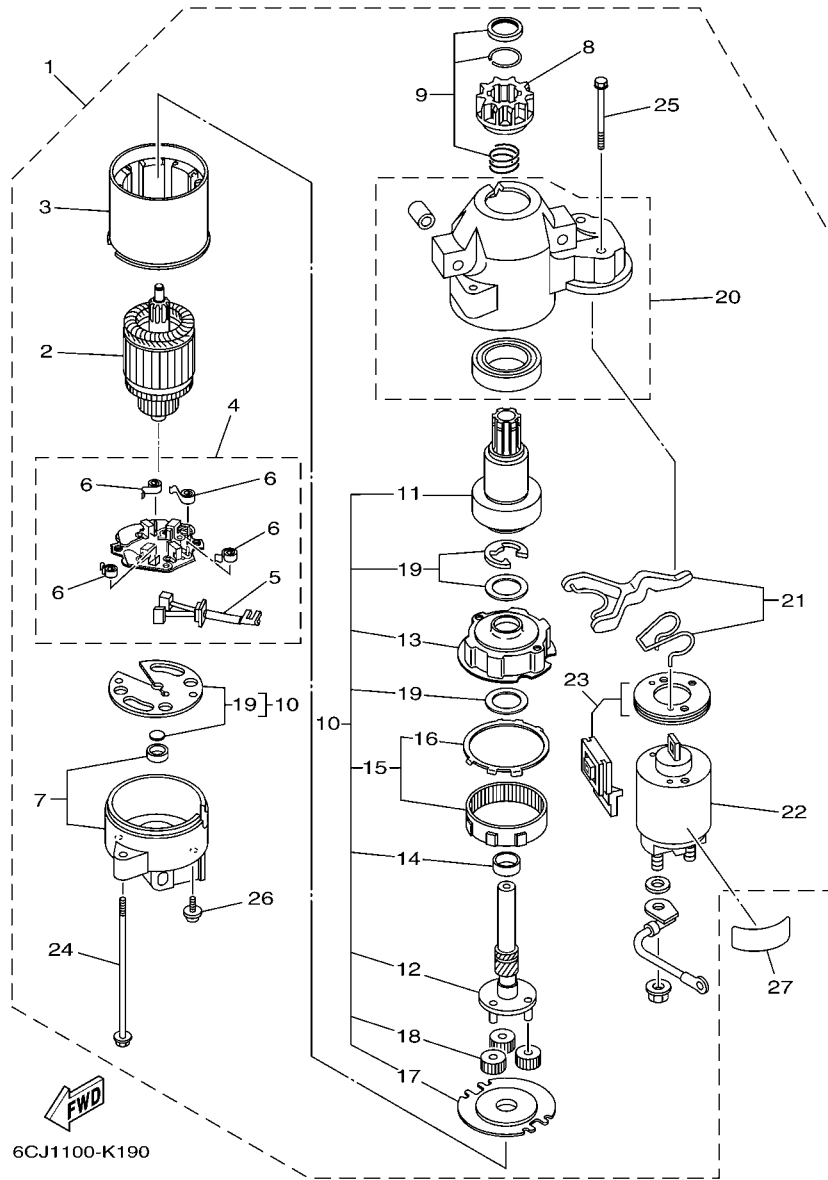


FIG. 17 ELECTRICAL 4

REF. NO.	PART NO.	DESCRIPTION	6C28	6C68	REMARKS
1	6C5-82105-U0	WIRE HARNESS	1	1	
2	90480-12072	GROMMET	1	1	
3	6C5-81822-00-94	BRACKET, STARTING MOTOR	1	1	
4	99590-10114	PIN, DOWEL	2	2	
5	95680-08330	BOLT, STUD	1	1	
6	95380-08600	NUT	1	1	
7	97095-08035	BOLT	2	2	
8	92995-08600	WASHER	2	2	
9	97095-08025	BOLT	2	2	
10	92995-08600	WASHER	2	2	
11	90480-24003	GROMMET	1	1	
12	97013-08045	BOLT	3	3	
13	92903-08600	WASHER, PLATE	3	3	
14	90465-13M18	CLAMP	1	1	



6CJ1100-K190

FIG. 18 STARTING MOTOR

REF. NO.	PART NO.	DESCRIPTION	6C28	6C68	REMARKS
1	6CJ-81800-00	STARTING MOTOR ASSY	1	1	
2	67F-81850-00	.ARMATURE ASSY	1	1	
3	67F-81810-00	.STATOR ASSY	1	1	
4	69J-81840-00	.BRUSH HOLDER ASSY	1	1	
5	69J-81801-00	..BRUSH SET	1	1	
6	67F-81813-00	..SPRING, BRUSH	4	4	
7	68F-81820-00	.REAR BRACKET ASSY	1	1	
8	67F-81808-00	.PINION ASSY	1	1	
9	67F-81857-00	.PINION STOPPER SET	1	1	
10	67F-81807-00	.GEAR ASSY, STARTING MOTOR	1	1	
11	67F-81832-00	..CLUTCH, OVER RUN	1	1	
12	67F-81836-00	..SHAFT, PINION	1	1	
13	67F-81821-00	..BRACKET, CENTER 1	1	1	
14	67F-81841-00	..BEARING	1	1	
15	67F-81891-00	..GEAR, RING	1	1	
16	67F-8183R-00	...GASKET	1	1	
17	67F-81830-00	..BRACKET, CENTER 2	1	1	
18	60V-8183T-00	..GEAR, IDLER	3	3	
19	67F-81809-00	..WASHER KIT	1	1	
20	60X-81842-00	.COVER	1	1	
21	6C5-81839-00	.LEVER ASSY	1	1	
22	6C5-81941-00	.STARTER RELAY ASSY	1	1	
23	6C5-81869-00	.COVER, DUST	1	1	
24	6K7-81826-11	.BOLT	2	2	
25	69J-81828-00	.SCREW 2	2	2	
26	67F-81846-00	.SCREW	2	2	
27	67F-83627-01	LABEL, CAUTION 7	1	1	

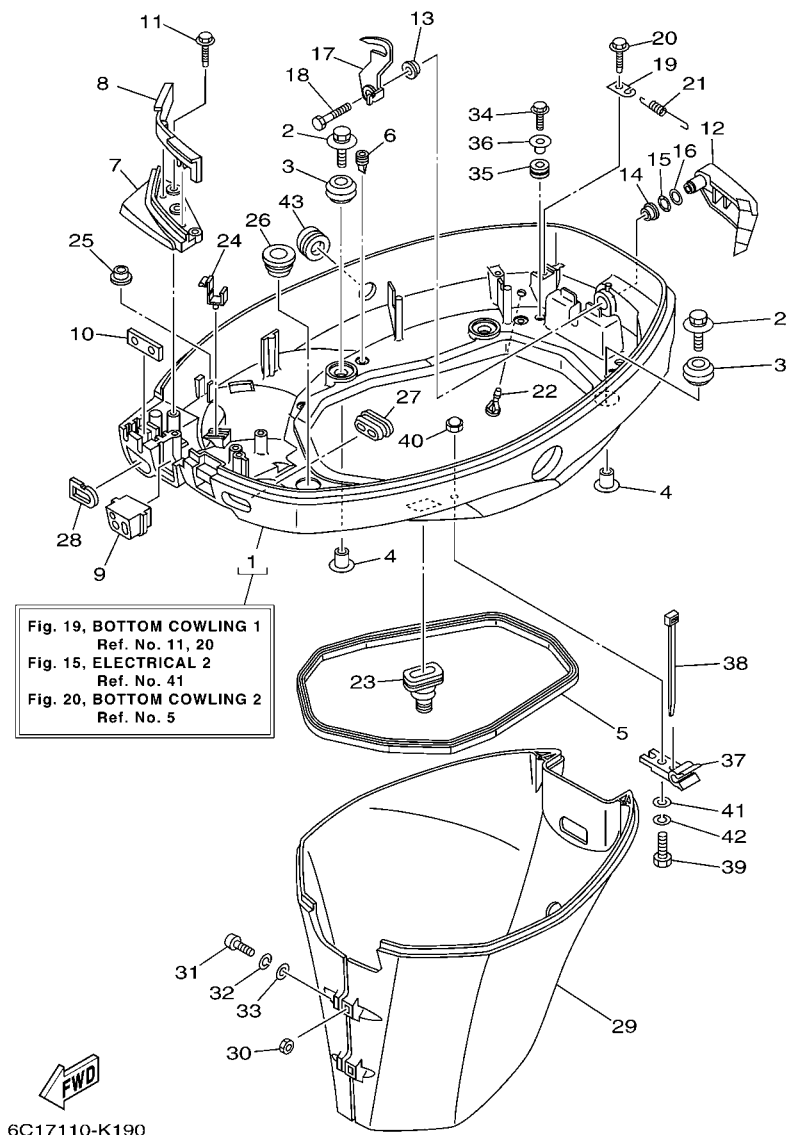


FIG. 19 BOTTOM COWLING 1

REF. NO.	PART NO.	DESCRIPTION	6C28	6C68	REMARKS
1	6C5-42710-10-8D	BOTTOM COWLING ASSY	1	1	
2	90119-06M61	BOLT, WITH WASHER	4	4	
3	6BG-42748-00	GROMMET	4	4	
4	90387-06M69	COLLAR	4	4	
5	62Y-42716-00	RUBBER, SEAL 1	1	1	
6	65W-42717-00	RUBBER, SEAL 2	4	4	
7	6C5-42738-00-8D	PLATE, FITTING	1	1	
8	6C5-42718-00	RUBBER, SEAL 3	1	1	
9	6C5-42725-30	GROMMET	1	1	
10	62Y-42727-00	GROMMET	1	1	
11	90109-06M81	BOLT	3	3	
12	67C-42815-00-8D	LEVER, CLAMP	1	1	
13	90386-12M37	BUSH	1	1	
14	90386-12MA2	BUSH	1	1	
15	90206-12052	WASHER, WAVE	1	1	
16	90201-12M07	WASHER, PLATE	1	1	
17	67C-42816-01	LEVER, CLAMP	1	1	
18	97095-06014	BOLT	1	1	
19	66T-43144-00	HOOK, SPRING	1	1	
20	90109-06M86	BOLT	1	1	
21	90506-18M40	SPRING, TENSION	1	1	
22	6BL-44391-00	NIPPLE, HOSE	1	1	
23	6BG-42724-00	GROMMET	1	1	
24	90464-09M13	CLAMP	1	1	
25	6E7-82317-00	DAMPER, IGNITION COIL	1	1	
26	68U-42727-00	GROMMET	1	1	
27	6H3-42727-00	GROMMET	1	1	

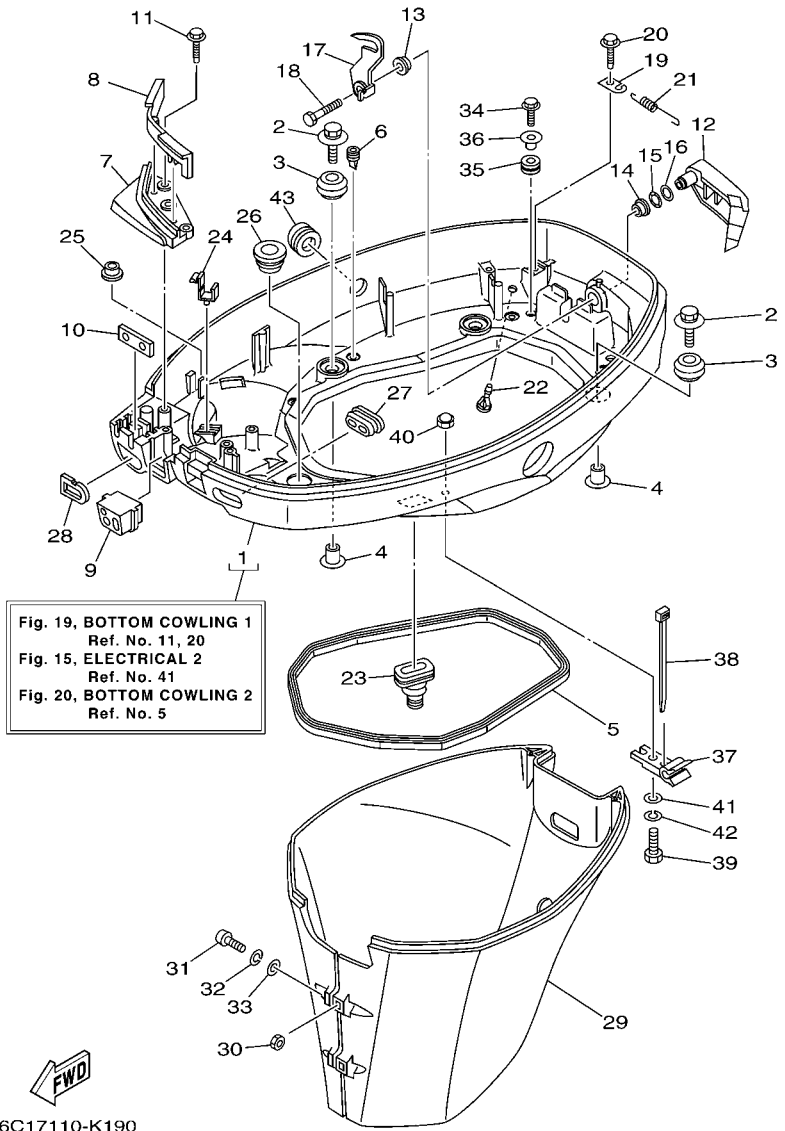
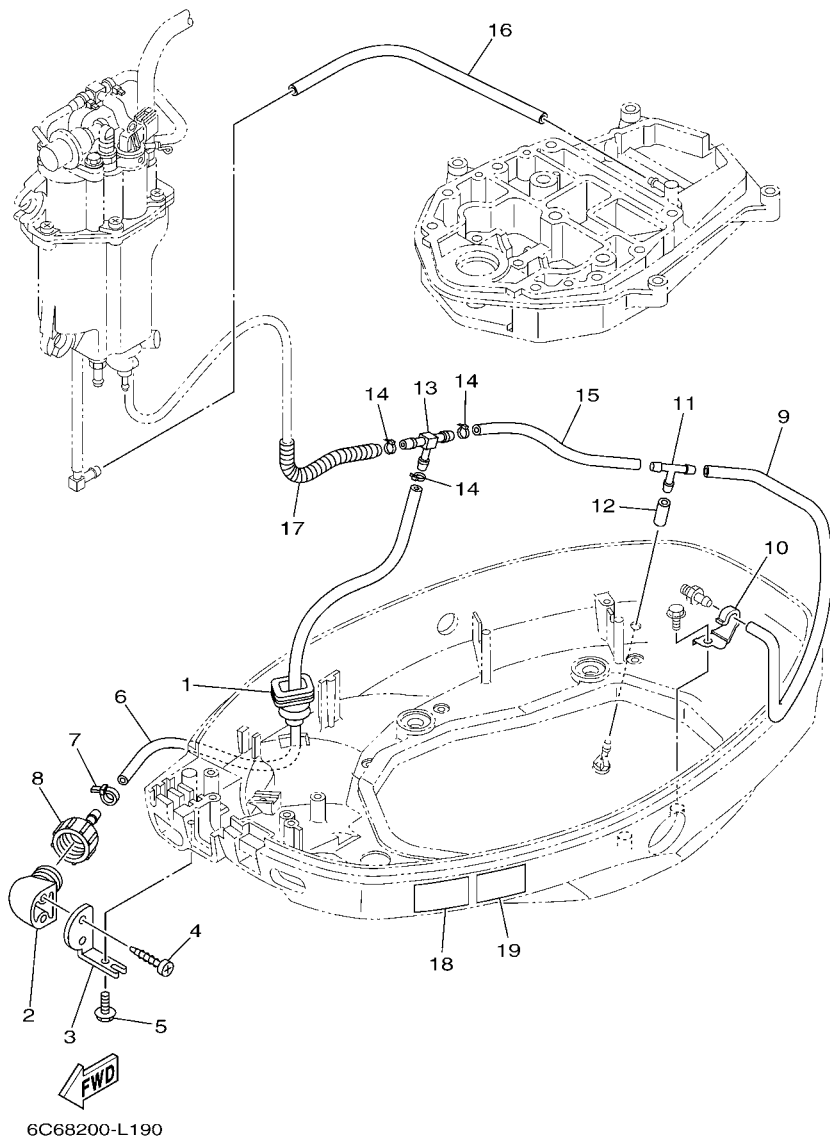


FIG. 19 BOTTOM COWLING 1

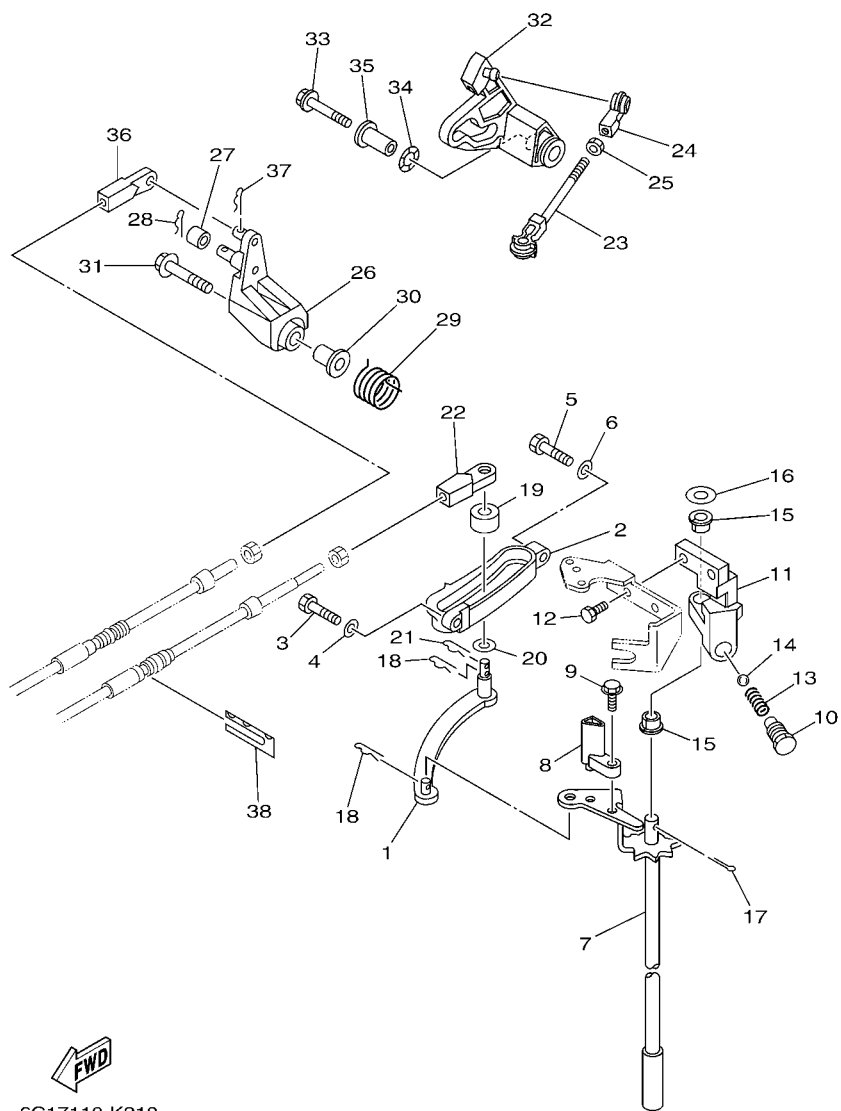
REF. NO.	PART NO.	DESCRIPTION	6C28	6C68	REMARKS
28	61N-24329-00	SEAL	1	1	
29	67C-42741-10-8D	APRON	1	1	
30	95380-06600	NUT, HEXAGON	2	2	
31	97880-06025	SCREW, PAN HEAD	2	2	
32	92990-06100	WASHER, SPRING	2	2	
33	92990-06600	WASHER, PLATE	2	2	
34	90109-06M80	BOLT	2	2	
35	90480-13M24	GROMMET	2	2	
36	90387-06M43	COLLAR	2	2	
37	90464-09M49	CLAMP	1	1	
38	90465-11M10	CLAMP	2	2	
39	97095-06020	BOLT	1	1	
40	95380-06800	NUT	1	1	
41	92990-06600	WASHER, PLATE	1	1	
42	92995-06100	WASHER, SPRING	1	1	
43	6C5-42726-00	GROMMET	1	1	

FIG. 20 BOTTOM COWLING 2



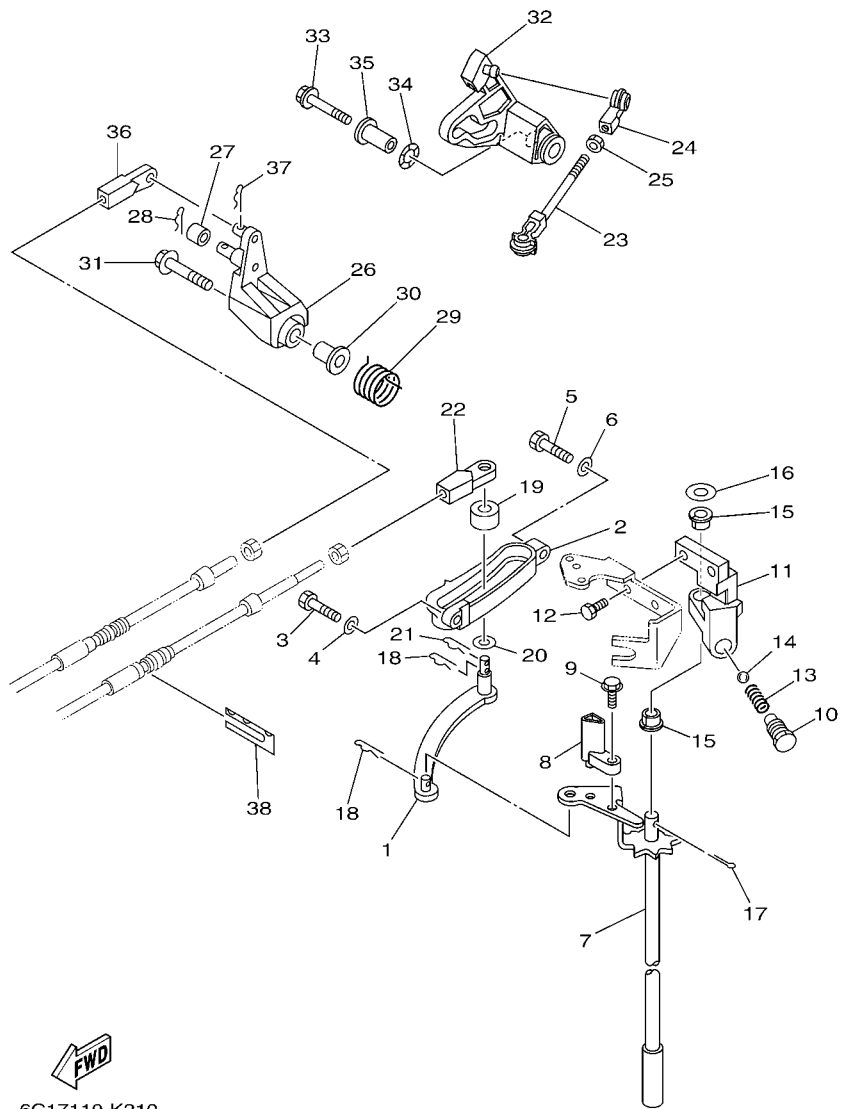
REF. NO.	PART NO.	DESCRIPTION	6C28	6C68			REMARKS
1	65W-42724-10	GROMMET	1	1			
2	68T-12572-00	ADAPTER	1	1			
3	69W-12535-00	PLATE	1	1			
4	90167-06002	SCREW, TAPPING	2	2			
5	90109-06M80	BOLT	1	1			
6	6C5-24312-00	PIPE 2	1	1			
7	90465-11M10	CLAMP	1	1			
8	6R3-12580-00	JOINT ASSY	1	1			
9	90445-09226	HOSE (L390)	1	1			
10	90462-08031	CLAMP	1	1			
11	688-24378-00	PIPE, JOINT 3	1	1			
12	90445-09220	HOSE (L30)	1	1			
13	6C5-24378-00	PIPE, JOINT 3	1	1			
14	90465-11M10	CLAMP	3	3			
15	90445-09091	HOSE (L135)	1	1			
16	90445-09304	HOSE (L310)	1	1			
17	90447-10006	TUBE	1	1			
18	6AH-42794-40	LABEL, WARNING (GENERAL)	1	1			
19	6AH-42794-50	LABEL, WARNING (GENERAL)	1	1			FOR CAN,CAR

FIG. 21 CONTROL



6C17110-K210

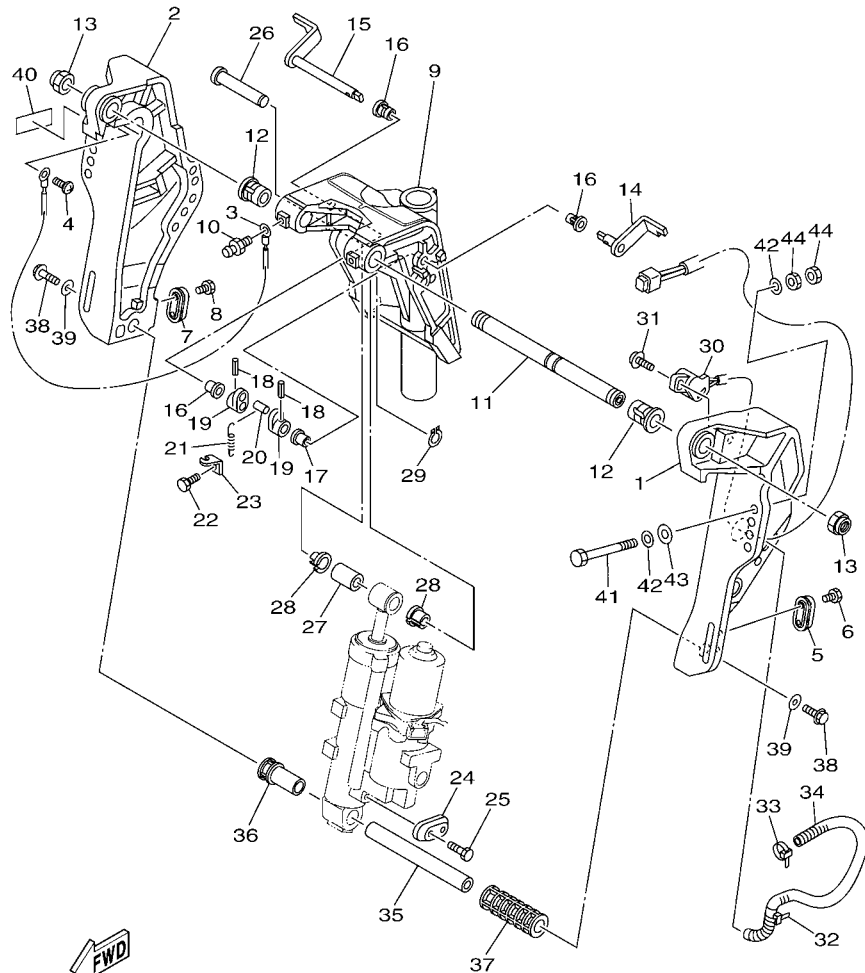
REF. NO.	PART NO.	DESCRIPTION	6C28	6C68	REMARKS
1	69W-44121-00	LEVER, SHIFT ROD	1	1	
2	62Y-44117-01-94	BRACKET	1	1	
3	97095-06020	BOLT	1	1	
4	92995-06600	WASHER	1	1	
5	97095-06025	BOLT	1	1	
6	92995-06600	WASHER	1	1	
7	6C5-44120-01	HANDLE GEAR SHIFT ASSY	1	1	L(20.7")
	6C5-44120-11	HANDLE GEAR SHIFT ASSY		1	X(25.2")
8	6C5-44122-00	BUSHING, SHIFT ROD LEVER	1	1	
9	97595-05514	BOLT, WITH WASHER	1	1	
10	62Y-42715-01	BUSHING	1	1	
11	62Y-44118-00-94	BRACKET	1	1	
12	90101-06054	BOLT	2	2	
13	90501-12082	SPRING, COMPRESSION	1	1	
14	93501-04M02	BALL	1	1	
15	90386-90M90	BUSH	2	2	
16	90201-10M20	WASHER, PLATE	1	1	
17	91490-20015	PIN. COTTER	1	1	
18	90468-18008	CLIP	2	2	
19	688-44122-00	BUSHING, SHIFT ROD LEVER	1	1	
20	90202-07M07	WASHER, PLATE	1	1	
21	90468-18008	CLIP	1	1	
22	69W-48344-00	CABLE END, REMOTE CONTROL	1	1	
23	688-41211-01	LINK, ACCEL.	1	1	
24	6H4-41237-00	JOINT, LINK	1	1	
25	95380-05700	NUT	1	1	
26	62Y-42154-00	LEVER, THROTTLE CONTROL	1	1	



6C17110-K210

FIG. 21 CONTROL

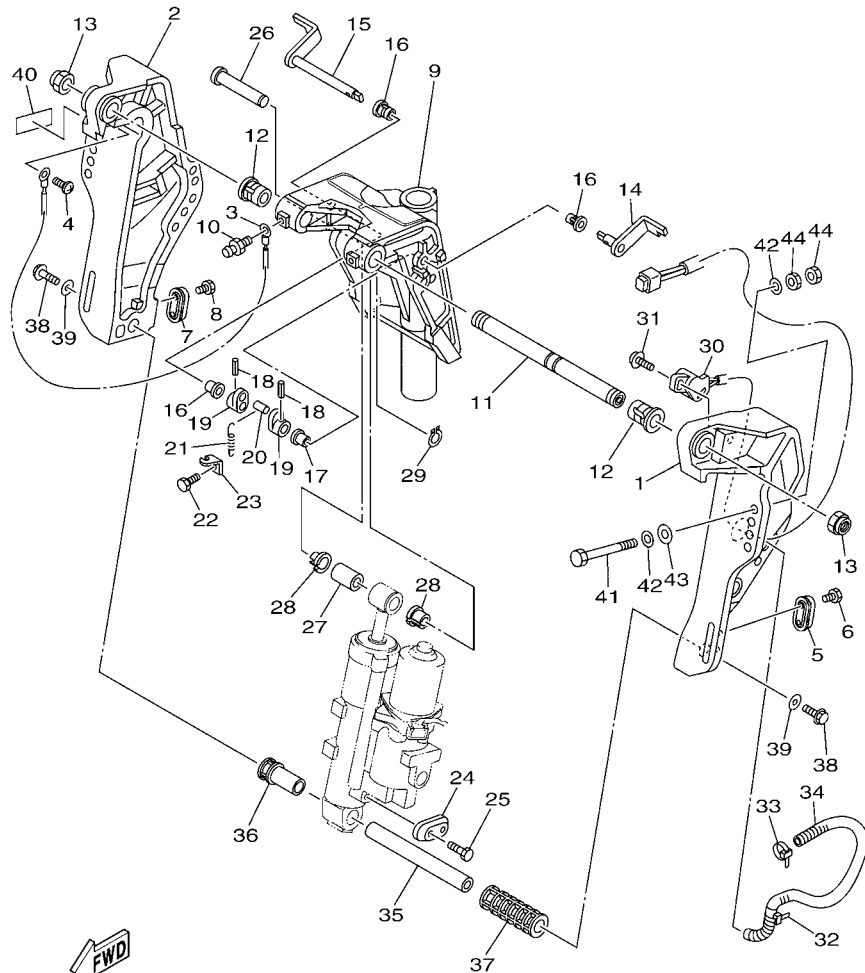
REF. NO.	PART NO.	DESCRIPTION	6C28	6C68			REMARKS
			1	1			
27	6C5-42171-00	BUSHING	1	1			
28	91490-16010	PIN. COTTER	1	1			
29	62Y-44135-00	SPRING	1	1			
30	90387-06M45	COLLAR	1	1			
31	90119-06106	BOLT, WITH WASHER	1	1			
32	6C5-42335-00	LEVER, ACCEL. CONTROL	1	1			
33	95895-06035	BOLT, FLANGE	1	1			
34	90206-10M04	WASHER, WAVE	1	1			
35	90387-06M82	COLLAR	1	1			
36	69W-48344-00	CABLE END, REMOTE CONTROL	1	1			
37	90468-18008	CLIP	1	1			
38	62Y-48538-00	CLAMP, CABLE 1	1	1			



6C18100-L250

FIG. 22 BRACKET 1

REF. NO.	PART NO.	DESCRIPTION	6C28	6C88	REMARKS
1	6C5-43111-01-8D	BRACKET, CLAMP 1	1	1	
2	6C5-43112-01-8D	BRACKET, CLAMP 2	1	1	
3	6E5-82148-00	WIRE, LEAD 4	1	1	
4	97885-06008	SCREW, PAN HEAD	1	1	
5	65W-45251-00	ANODE	1	1	
6	90101-06020	BOLT	2	2	
7	65W-45251-00	ANODE	1	1	
8	90101-06020	BOLT	2	2	
9	6C5-43311-01-8D	BRACKET, SWIVEL 1	1	1	
10	93700-06M03	NIPPLE, GREASE	3	3	
11	63D-43131-01	BOLT, CLAMP BRACKET	1	1	
12	90386-22MA4	BUSH	2	2	
13	90185-22M11	NUT, SELF-LOCKING	2	2	
14	6C5-43181-00	LEVER, TILT STOP 1	1	1	
15	6C5-43185-00	LEVER, TILT STOP 2	1	1	
16	90386-10M16	BUSH	3	3	
17	90386-10025	BUSH	1	1	
18	91690-30020	PIN, SPRING	2	2	
19	6G5-43148-00	COLLAR, DISTANCE	2	2	
20	90249-06M19	PIN	1	1	
21	90506-14M24	SPRING, TENSION	1	1	
22	97095-06010	BOLT	1	1	
23	6G5-43144-00	HOOK, SPRING	1	1	
24	65W-45251-00	ANODE	1	1	
25	90101-06020	BOLT	2	2	
26	6E5-43126-02	PIN, UPPER SHOCK MOUNT	1	1	
27	90386-18M92	BUSH	1	1	



6C18100-L250

FIG. 22 BRACKET 1

REF. NO.	PART NO.	DESCRIPTION	6C28	6C68			REMARKS
28	90386-18M35	BUSH	2	2			
29	93410-18M05	CIRCLIP	1	1			
30	63D-83672-11	TRIM SENDER	1	1			
31	97985-06216	SCREW, WITH WASHER	2	2			
32	90464-76001	CLAMP	1	1			
33	90465-11M10	CLAMP	1	1			
34	90447-19009	TUBE	1	1			
35	6CJ-43818-00	PIN, LOWER SHOCK MOUNT	1	1			
36	6C5-43833-00	PIPE	1	1			
37	6C5-43834-00	PIPE	1	1			
38	97575-10530	BOLT, WITH WASHER	2	2			
39	90201-10060	WASHER, PLATE	2	2			
40	63V-82377-50	LABEL (SPARK,IGNITION)	1	1			FOR CAN
41	90101-12M65	BOLT	4	4			
42	90201-12062	WASHER, PLATE	8	8			
43	90201-12426	WASHER, PLATE	4	4			
44	95380-12600	NUT	8	8			

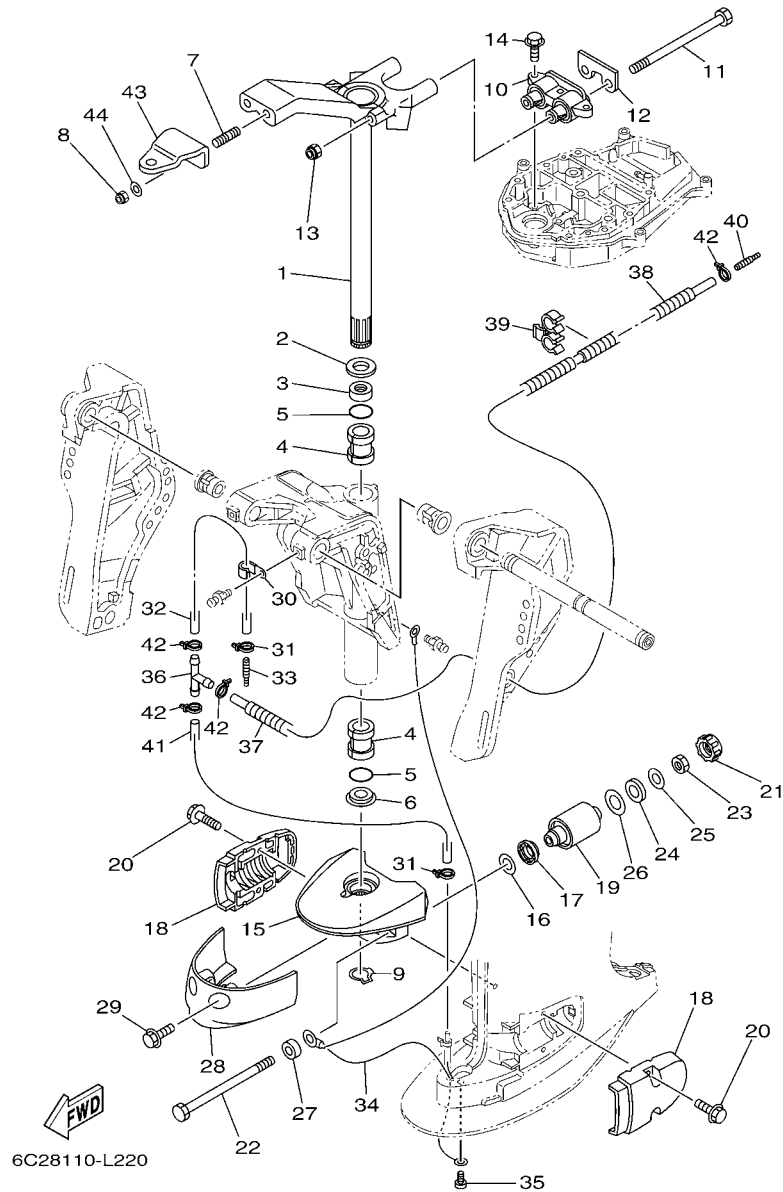


FIG. 23 BRACKET 2

REF. NO.	PART NO.	DESCRIPTION	6C28	6C88			REMARKS
1	69W-42510-01-8D	STEERING BRACKET ASSY	1	1			
2	90201-30M00	WASHER, PLATE	1	1			
3	90386-30M78	BUSH	1	1			
4	90386-30M77	BUSH	2	2			
5	93210-29M94	O-RING	2	2			
6	90386-30M60	BUSH	1	1			
7	90116-10038	BOLT, STUD	2	2			
8	90185-10051	NUT, SELF-LOCKING	2	2			
9	93410-28M06	CIRCLIP	1	1			
10	64J-44514-00	MOUNT DAMPER, UPPER SIDE	1	1			
11	90101-08M15	BOLT	2	2			
12	69W-44526-01	PLATE	1	1			
13	90185-08045	NUT, SELF-LOCKING	2	2			
14	97575-08530	BOLT, WITH WASHER	3	3			
15	69W-44551-00-8D	HOUSING, LOWER MOUNT RUBBER 1	1	1			
16	90201-12M16	WASHER, PLATE	2	2			
17	6C5-43885-00	GROMMET	2	2			
18	6C5-44552-00-8D	HOUSING, LOWER MOUNT RUBBER 2	2	2			
19	69W-44555-00-94	MOUNT DAMPER, LOWER SIDE	2	2			
20	90119-08131	BOLT, WITH WASHER	4	4			
21	6C5-44575-00	DAMPER, LOWER MOUNT RUBBER	2	2			
22	90109-12MA3	BOLT	2	2			
23	95380-12700	NUT	2	2			
24	90202-21100	WASHER, PLATE	2	2			
25	90201-13M19	WASHER, PLATE	2	2			
26	90201-22M05	WASHER, PLATE	2	2			
27	6C6-43127-00	COLLAR	2	2			

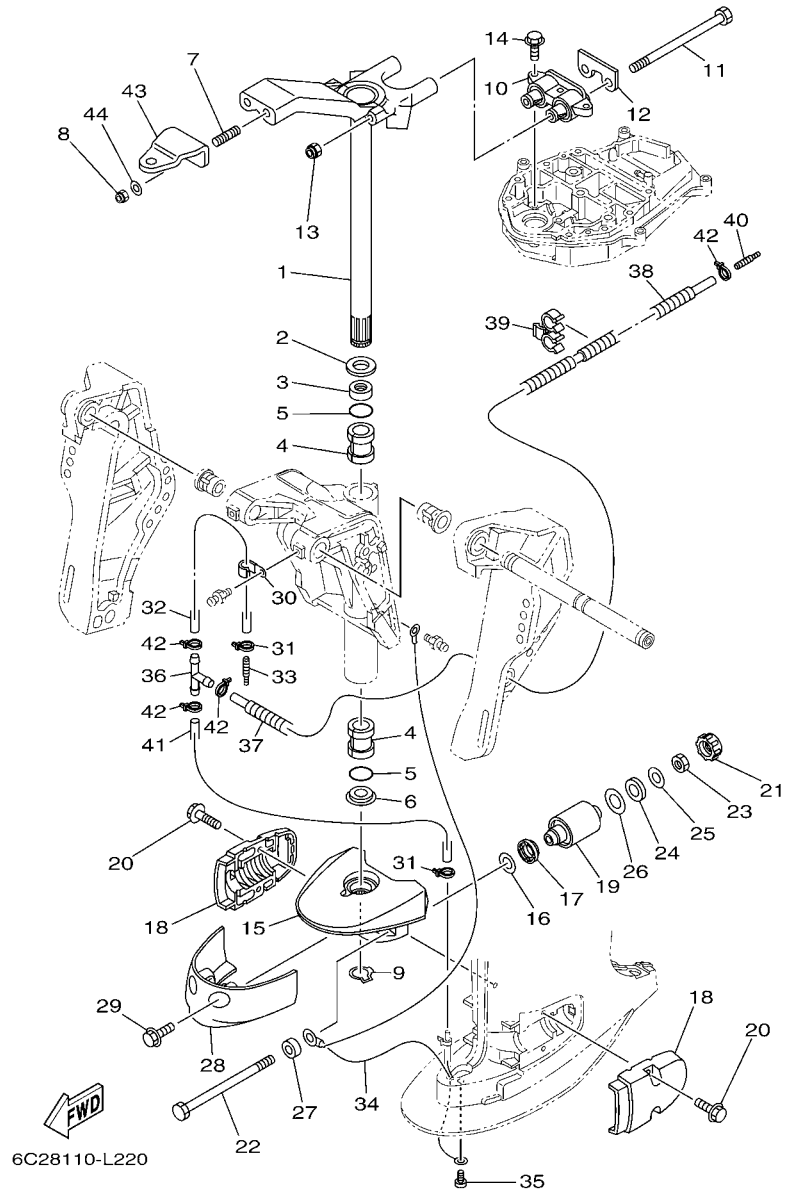


FIG. 23 BRACKET 2

REF. NO.	PART NO.	DESCRIPTION	6C28	6C68			REMARKS
			1	1			
28	67C-44553-00-8D	COVER, LOWER MOUNT	1	1			
29	90119-08100	BOLT, WITH WASHER	2	2			
30	90465-06M86	CLAMP	1	1			
31	90465-11M10	CLAMP	2	2			
32	90445-07MF2	HOSE (L250)	1	1			
33	6E5-83558-00	END, NIPPLE	1	1			
34	67C-82127-10	WIRE, LEAD 2	1	1			
35	97885-06008	SCREW, PAN HEAD	1	1			
36	90413-05014	WAY 3	1	1			
37	6C5-44385-01	HOSE, WATER 1	1	1			
38	90447-07001	HOSE, WITH SPRING (L400)	1	1			
39	90464-10006	CLAMP	1	1			
40	6E5-83558-00	END, NIPPLE	1	1			
41	90445-07M30	HOSE (L450)	1	1			
42	90465-11M10	CLAMP	4	4			
43	65W-48511-00	HOOK, STEERING	1	1			
44	90201-10120	WASHER, PLATE	2	2			

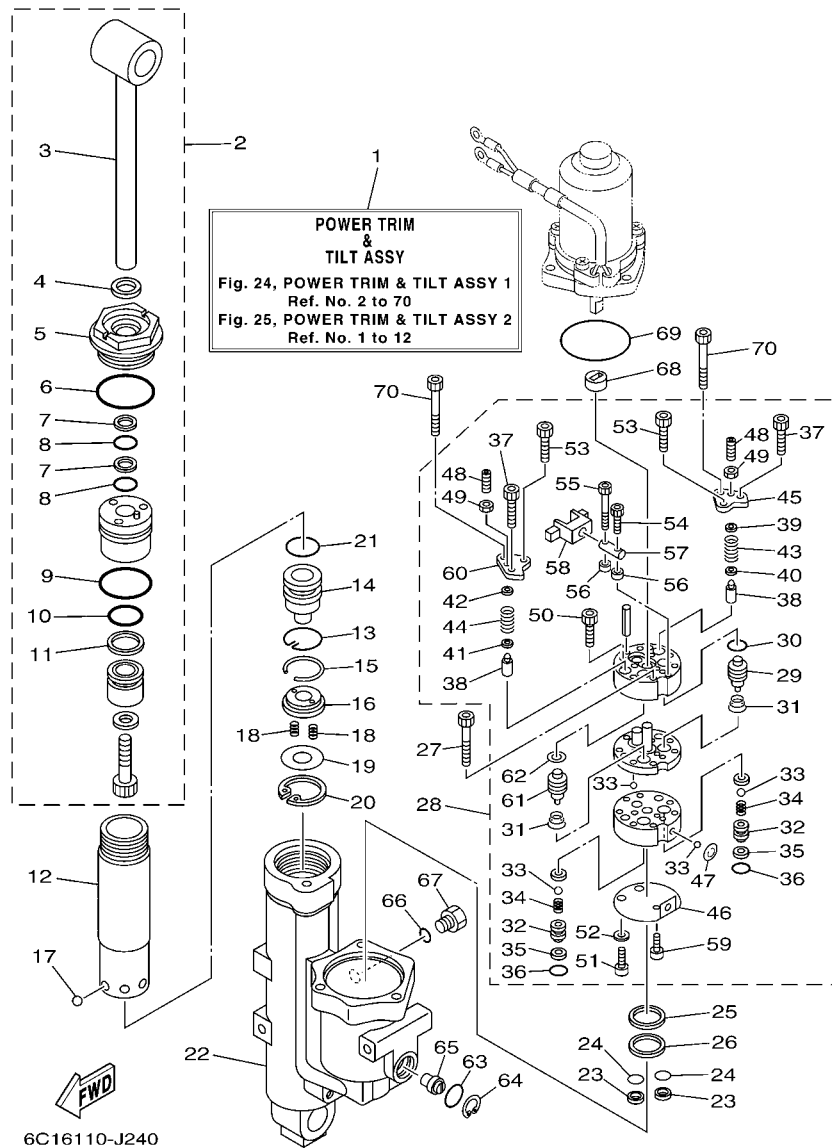


FIG. 24 POWER TRIM & TILT ASSY 1

REF. NO.	PART NO.	DESCRIPTION	6C28	6C68	REMARKS
1	6C5-43800-01-8D	POWER TRIM & TILT ASSY	1	1	
2	6C5-43810-00	TILT PISTON SUB ASSY	1	1	
3	6C5-43801-00	.ROD	1	1	
4	62Y-43822-00	.SEAL, TRIM DUST	1	1	
5	6C5-43821-00	.SCREW, TRIM CYLINDER END	1	1	
6	62Y-43863-00	.O-RING	1	1	
7	62X-43872-00	.RING, BACK UP	2	2	
8	6C5-43863-00	.O-RING	2	2	
9	6C5-43862-00	.O-RING	1	1	
10	6C5-43861-00	.O-RING	1	1	
11	6C5-43871-00	.RING, BACK UP	1	1	
12	6C5-22471-00	CYLINDER, SHOCK ABSORBER	1	1	
13	6C5-43875-00	RING, SNAP	1	1	
14	6C5-4381B-00	FREE PISTON SUB ASSY	1	1	
15	93450-32116	CIRCLIP	1	1	
16	6C5-43899-00	PLATE STOPPER	1	1	
17	93503-16003	BALL	6	6	
18	62X-4384H-00	SPRING	2	2	
19	6C5-22435-00	PLATE, VALVE 2	1	1	
20	99009-32500	CIRCLIP	1	1	
21	6C5-43861-00	O-RING	1	1	
22	6C5-4380K-00	CYLINDER, TILT SUB ASSY	1	1	
23	6C5-43817-10	FILTER 2	2	2	
24	69J-4389J-00	O-RING	2	2	
25	6C5-43816-00	FILTER 1	1	1	
26	6C5-4380G-00	PLATE	1	1	
27	91318-05045	BOLT	2	2	

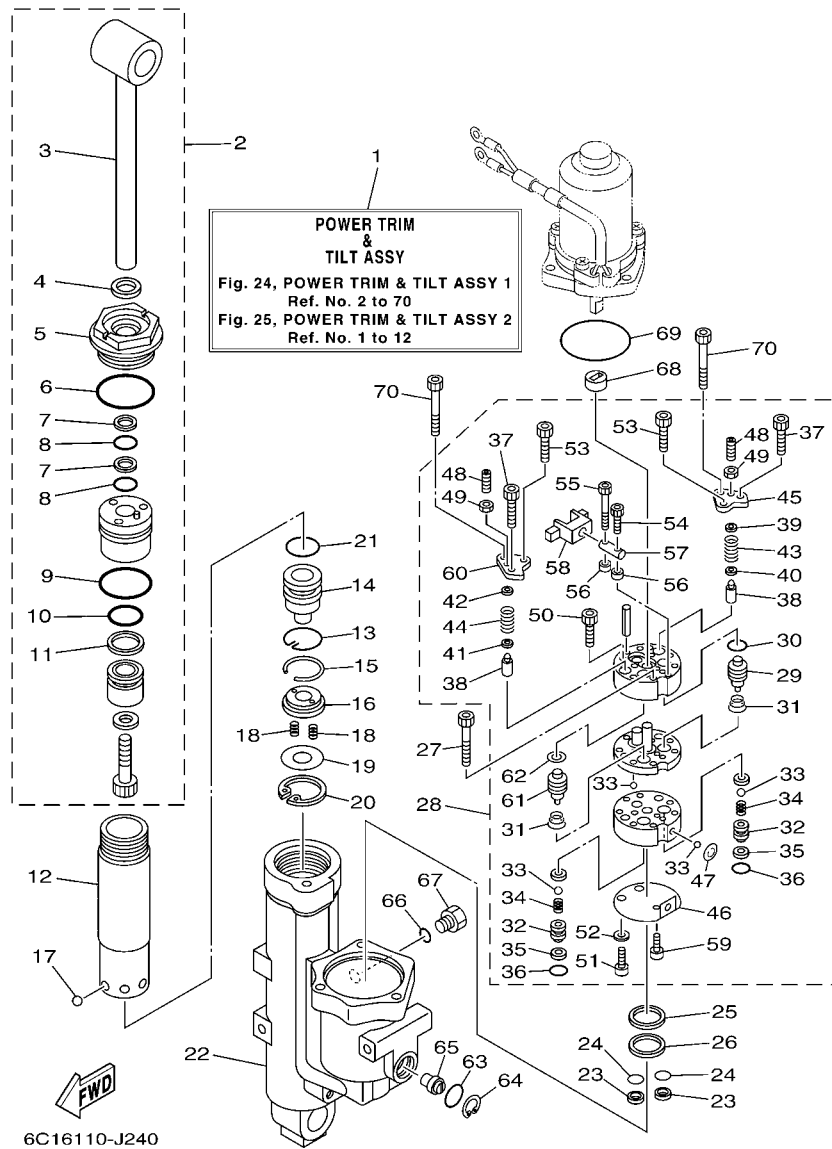


FIG. 24 POWER TRIM & TILT ASSY 1

REF. NO.	PART NO.	DESCRIPTION	6C28	6C68	REMARKS
28	6C5-43830-00	GEAR PUMP ASSY	1	1	
29	6C6-43841-00	.PISTON, SHUTTLE	1	1	
30	6H1-43883-00	.O-RING	1	1	
31	6C6-43894-00	.SPRING, SHUTTLE RETURN	2	2	
32	6C6-4382E-00	.ADAPTOR 2	2	2	
33	93505-32038	.BALL	6	6	
34	6C6-43853-00	.SPRING, MAIN VALVE	2	2	
35	6C6-4387G-00	.WASHER	2	2	
36	69J-4389J-00	.O-RING	2	2	
37	91318-05030	.BOLT	2	2	
38	6C5-43851-00	.SEAT, RELIEF VALVE	2	2	
39	6C5-4381K-00	.HOLDER	1	1	
40	6C5-43893-00	.WASHER	1	1	
41	6C6-43893-00	.WASHER	1	1	
42	6C6-4381K-00	.HOLDER	1	1	
43	6C5-43855-00	.SPRING, UP RELIEF	1	1	
44	6C5-43856-00	.SPRING, DOWN RELIEF	1	1	
45	6C5-4382K-00	.CAP, RELIEF VALVE	1	1	
46	6C5-43895-00	.SEAT, RELIEF VALVE	1	1	
47	6C5-43854-00	.SPRING, MANUAL RELEASE	1	1	
48	92A08-03110	.SCREW SET	2	2	
49	95302-03600	.NUT	2	2	
50	91318-05025	.BOLT	2	2	
51	6C6-43878-00	.BOLT, SOCKET	2	2	
52	62Y-4387G-00	.WASHER	2	2	
53	91318-04030	.BOLT	2	2	
54	91318-03016	.BOLT	1	1	

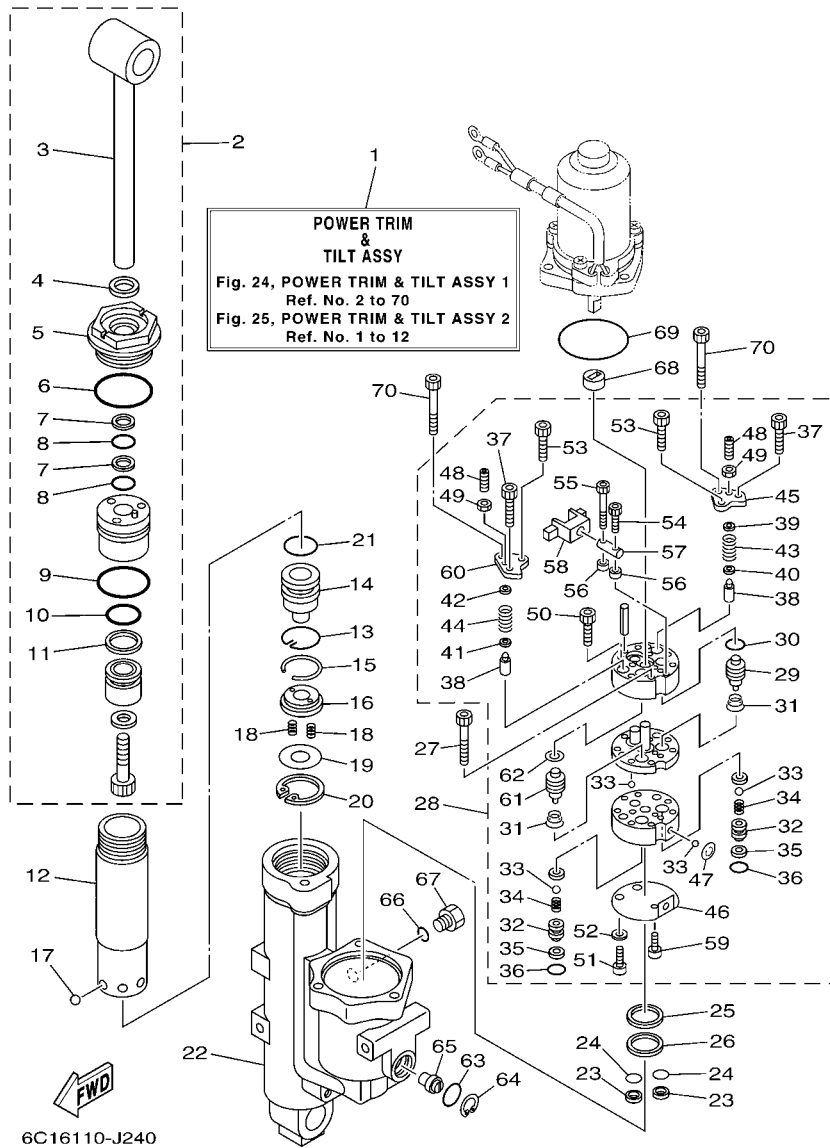


FIG. 24 POWER TRIM & TILT ASSY 1

REF. NO.	PART NO.	DESCRIPTION	6C28	6C68	REMARKS
55	6C6-4388E-00	.PLUG, TAPER SCREW	1	1	
56	6C6-4388F-00	.SPACER	2	2	
57	6C6-4386G-00	.PIN, STRAIGHT 2	1	1	
58	6C6-4386E-00	.LEVER 1	1	1	
59	91318-03005	.BOLT	1	1	
60	6C5-4382L-00	.CAP, RELIEF VALVE	1	1	
61	6C5-43841-00	.PISTON, SHUTTLE	1	1	
62	6C5-43872-00	.RING, BACK UP	1	1	
63	6D8-43863-00	O-RING	1	1	
64	6H1-43875-00	RING, SNAP	1	1	
65	6C5-43845-00	SCREW, MANUAL RELEASE	1	1	
66	93210-09165	O-RING	1	1	
67	6H1-43829-00	PLUG, RESERVOIR	1	1	
68	6C5-43831-00	CONNECTOR, SHAFT	1	1	
69	93210-64488	O-RING	1	1	
70	91318-05050	BOLT	2	2	



6C11010D2801

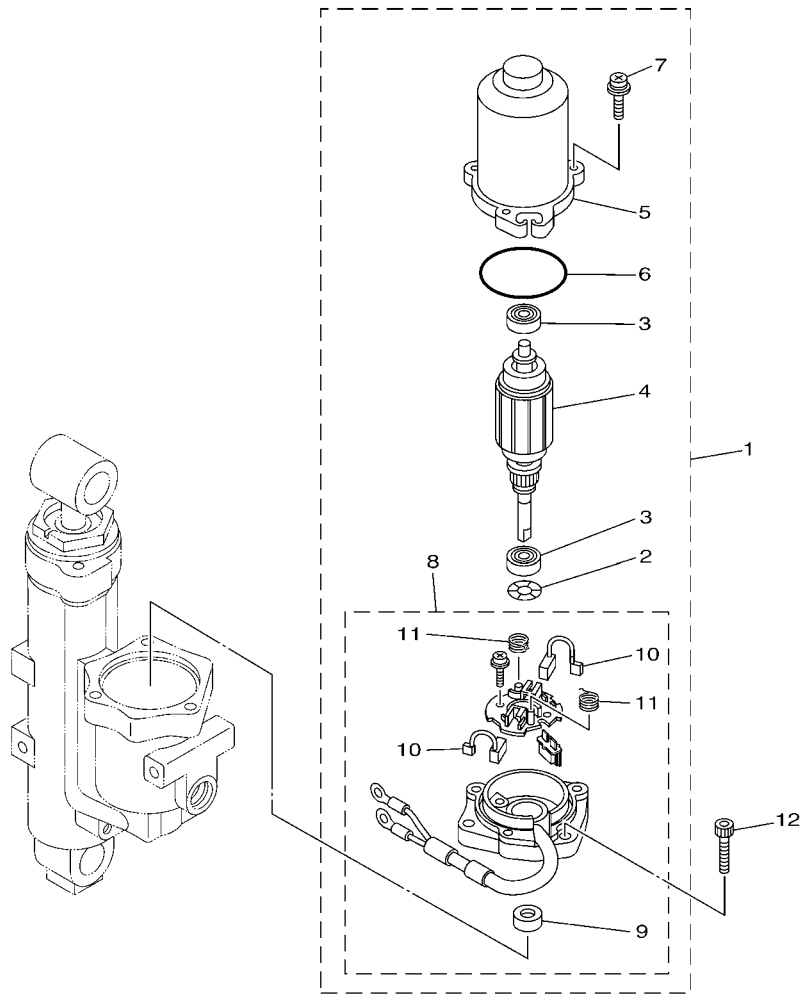
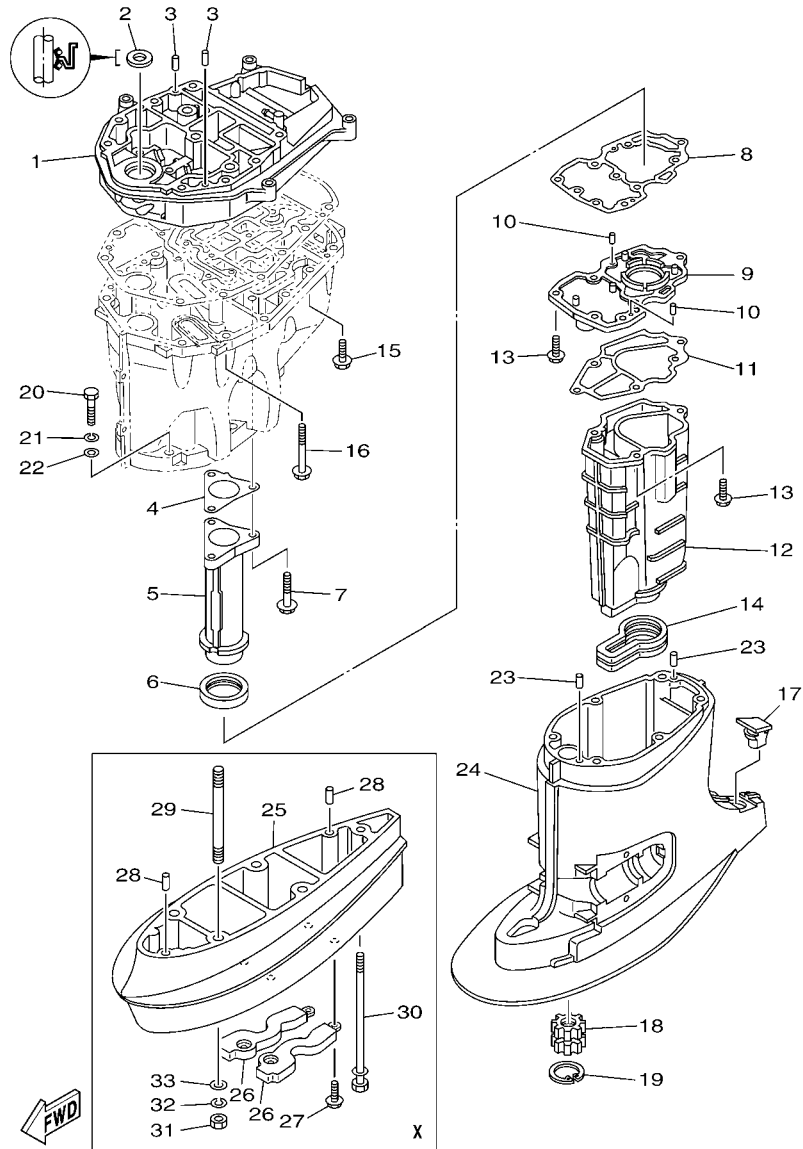


FIG. 25 POWER TRIM & TILT ASSY 2

REF. NO.	PART NO.	DESCRIPTION	6C28	6C68			REMARKS
1	6C5-43880-01	MOTOR ASSY	1	1			
2	90206-08N51	.WASHER, WAVE	1	1			
3	93399-999T8	.BEARING	2	2			
4	6C5-43805-00	.ARMATURE ASSY	1	1			
5	6C5-43804-01	.STATOR ASSY	1	1			
6	6C5-43869-00	.O-RING	1	1			
7	6C5-43879-00	.SCREW, WITH WASHER	3	3			
8	6C5-43881-01	.FRAME, END	1	1			WITH CIRCUIT BREAKER
9	6C5-43882-00	..OIL SEAL	1	1			
10	6C5-43891-00	..BRUSH 1	2	2			
11	6C5-4386K-00	..SPRING, BRUSH	2	2			
12	62X-43888-00	BOLT, SOCKET	3	3			

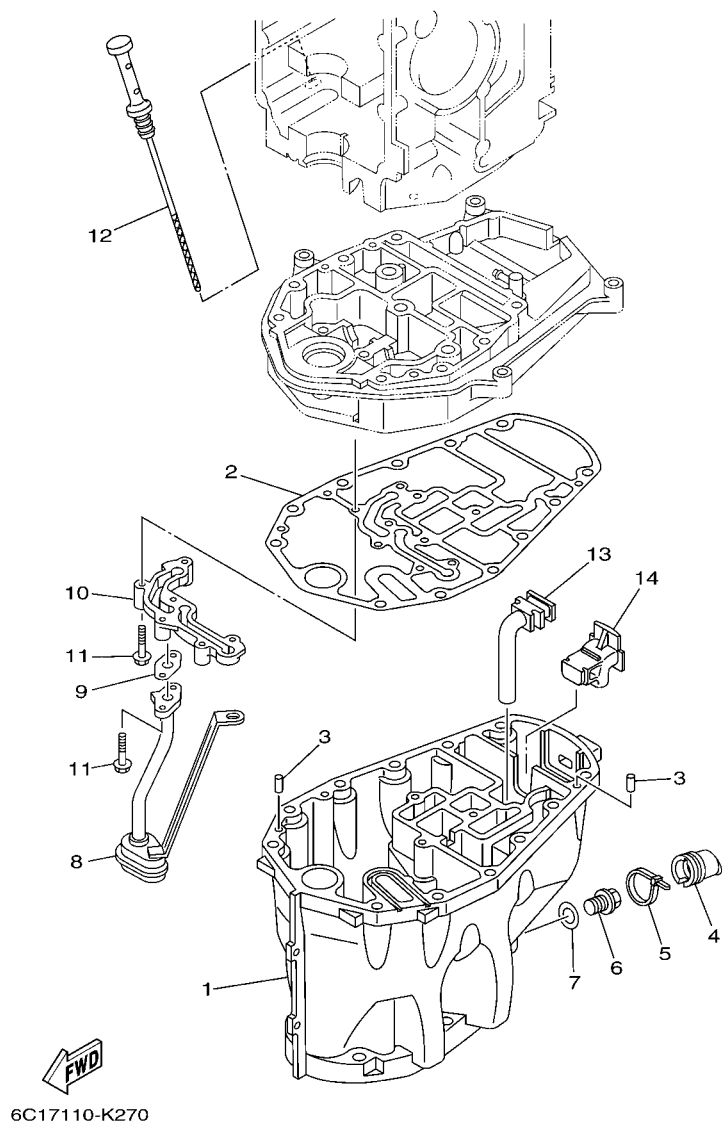


6C28100-L260

FIG. 26 UPPER CASING

REF. NO.	PART NO.	DESCRIPTION	6C28	6C68	REMARKS
1	6C5-41137-02-CA	GUIDE, EXHAUST	1	1	
2	93103-18011	OIL SEAL	1	1	
3	93608-12M05	PIN, DOWEL	2	2	
4	6C5-41133-00	GASKET, EXHAUST MANIFOLD 1	1	1	
5	6C5-41131-00-CA	MANIFOLD, EXT. 1	1	1	
6	6C5-46132-00	GASKET 1	1	1	
7	90119-06261	BOLT, WITH WASHER	3	3	
8	6C5-41134-00	GASKET, EXHAUST MANIFOLD	1	1	
9	6C5-45181-00-CA	PLATE	1	1	
10	93604-10M03	PIN, DOWEL	2	2	
11	6C5-41135-00	GASKET, EXHAUST MANIFOLD	1	1	
12	6C5-14711-00-CA	MUFFLER 1	1	1	
13	97575-06525	BOLT, WITH WASHER	6	6	
14	6C5-45123-00	GASKET, MUFFLER	1	1	
15	90119-08102	BOLT, WITH WASHER	4	4	
16	90119-08132	BOLT, WITH WASHER	8	8	
17	6C5-45155-00	CAP	1	1	
18	69W-45318-00	BUSHING, DRIVE SHAFT	1	1	
19	93420-36M01	CIRCLIP	1	1	
20	97075-10045	BOLT	6	6	
21	92995-10100	WASHER	6	6	
22	92995-10600	WASHER	6	6	
23	93606-12019	PIN, DOWEL	2	2	
24	6C5-45111-00-8D	CASING, UPPER	1	1	
25	6C5-45211-00-8D	EXTENSION	1		X(25.2")
26	6C5-45213-00-5B	COVER, EXTENSION	2		X(25.2")
27	97575-06520	BOLT, WITH WASHER	4		X(25.2")

FIG. 27 OIL PAN



REF. NO.	PART NO.	DESCRIPTION	6C28	6C68			REMARKS
			1	1			
1	6C5-15311-01-CA	OIL PAN	1	1			
2	6C5-15312-01	GASKET, OIL PAN	1	1			
3	93606-12019	PIN, DOWEL	2	2			
4	6CJ-15316-00	DAMPER 1	1	1			
5	90465-11M59	CLAMP	1	1			
6	90340-14M06	PLUG, STRAIGHT SCREW	1	1			
7	90430-14M09	GASKET	1	1			
8	6CJ-13411-00	STRAINER, OIL	1	1			
9	6C5-13414-01	GASKET, STRAINER COVER	1	1			
10	6CJ-15333-00	COVER	1	1			
11	95812-06035	BOLT, FLANGE	6	6			
12	6C5-15362-00	PLUG, OIL LEVEL	1	1			
13	6C5-45135-01	PIPE	1	1			
14	6C5-45136-01	PIPE	1	1			

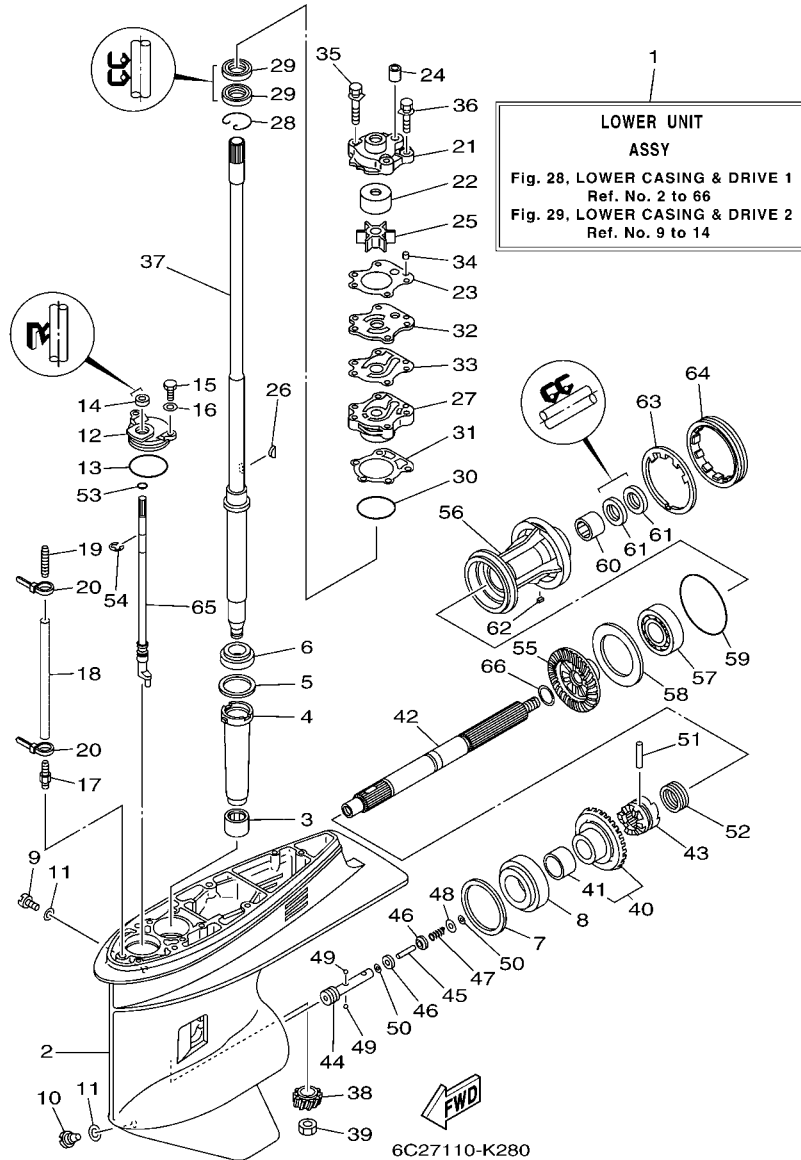


FIG. 28 LOWER CASING & DRIVE 1

REF. NO.	PART NO.	DESCRIPTION	6C28	6C68	REMARKS
1	68S-45300-32-8D	LOWER UNIT ASSY	1	1	L(20.7")
	68S-45300-42-8D	LOWER UNIT ASSY		1	X(25.2")
2	67F-45301-00-8D	CASING, LOWER	1	1	
3	93315-52563	BEARING	1	1	
4	688-45536-01	SLEEVE, DRIVE SHAFT	1	1	
5	688-45587-01	SHIM (T:0.10MM)	1	1	UR
	688-45587-10	SHIM (T:0.12MM)	1	1	UR
	688-45587-20	SHIM (T:0.15MM)	1	1	UR
	688-45587-30	SHIM (T:0.18MM)	1	1	UR
	688-45587-40	SHIM (T:0.30MM)	1	1	UR
6	688-45587-50	SHIM (T:0.40MM)	1	1	UR
	688-45587-60	SHIM (T:0.50MM)	1	1	UR
6	93332-000U3	BEARING	1	1	
7	688-45567-01	SHIM (T:0.10MM)	1	1	UR
	688-45567-10	SHIM (T:0.12MM)	1	1	UR
	688-45567-20	SHIM (T:0.15MM)	1	1	UR
	688-45567-30	SHIM (T:0.18MM)	1	1	UR
	688-45567-40	SHIM (T:0.30MM)	1	1	UR
	688-45567-50	SHIM (T:0.40MM)	1	1	UR
	688-45567-60	SHIM (T:0.50MM)	1	1	UR
8	93332-00095	BEARING	1	1	
9	90340-08002	PLUG, STRAIGHT SCREW	1	1	
10	688-45341-10	PLUG, DRAIN	1	1	
11	90430-08020	GASKET	2	2	
12	688-45321-00	PLATE	1	1	
13	93210-49046	O-RING	1	1	
14	93106-09014	OIL SEAL	1	1	

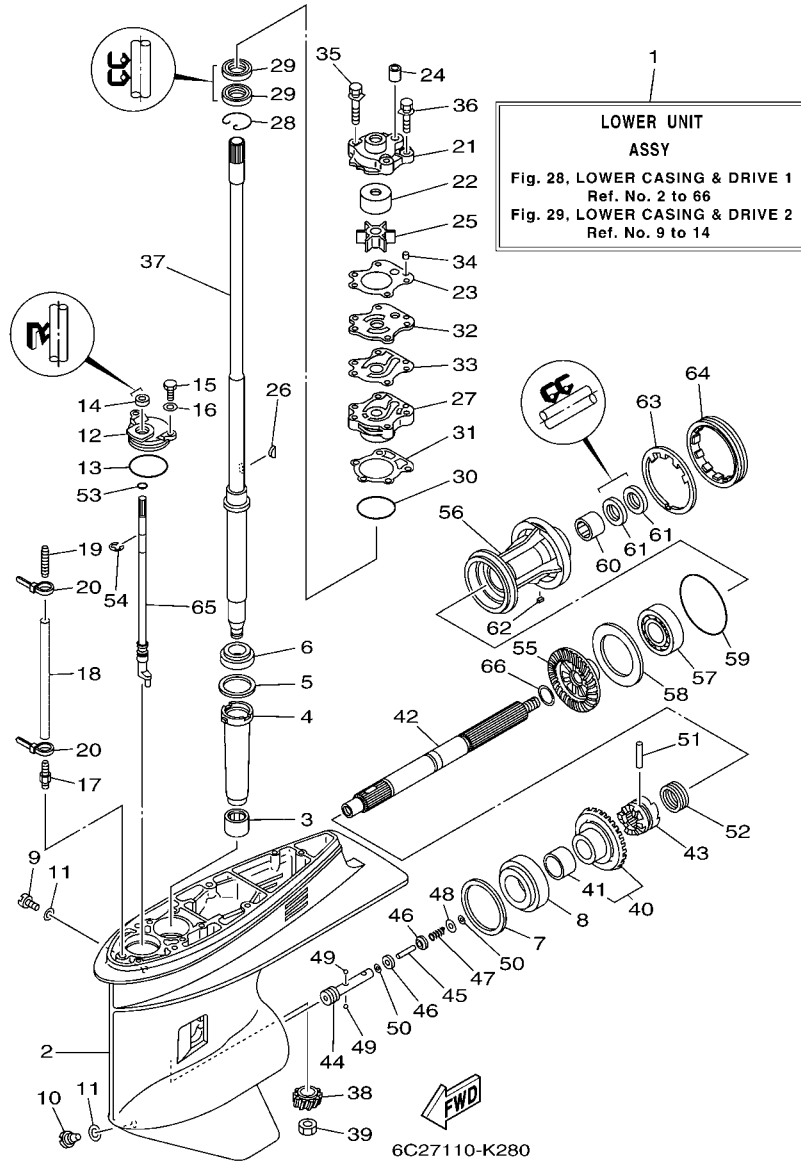


FIG. 28 LOWER CASING & DRIVE 1

REF. NO.	PART NO.	DESCRIPTION	6C28	6C68	REMARKS
15	97095-06016	BOLT	2	2	
16	92995-06600	WASHER	2	2	
17	6E5-45378-00	NIPPLE, HOSE	1	1	
18	90445-07ME8	HOSE (L80)	1	1	L(20.7")
	90445-07M31	HOSE (L200)		1	X(25.2")
19	6E5-83558-10	END, NIPPLE	1	1	
20	90465-11M10	CLAMP	2	2	
21	6H3-44311-00	HOUSING, WATER PUMP	1	1	
22	663-44322-00	INSERT, CARTRIDGE	1	1	
23	6H3-44315-A0	GASKET, WATER PUMP	1	1	
24	663-44366-00	DAMPER, WATER SEAL 2	1	1	
25	6H3-44352-00	IMPELLER	1	1	
26	90280-03M03	KEY, WOODRUFF	1	1	
27	6H3-44341-01-CA	HOUSING, WATER PUMP	1	1	
28	93450-40165	CIRCLIP	1	1	
29	93101-23070	OIL SEAL	2	2	
30	93210-46044	O-RING	1	1	
31	688-44316-A0	GASKET, WATER PUMP	1	1	
32	6H3-44323-00	OUTER PLATE, CARTRIDGE	1	1	
33	6H3-44324-A0	GASKET, CARTRIDGE	1	1	
34	93604-10M03	PIN, DOWEL	2	2	
35	90119-08M33	BOLT, WITH WASHER	2	2	
36	90119-08M14	BOLT, WITH WASHER	2	2	
37	64J-45501-30	DRIVE SHAFT COMP.	1	1	L(20.7")
	64J-45501-40	DRIVE SHAFT COMP.		1	X(25.2")
38	6K5-45551-00	PINION (12T)	1	1	
39	90170-16M01	NUT	1	1	

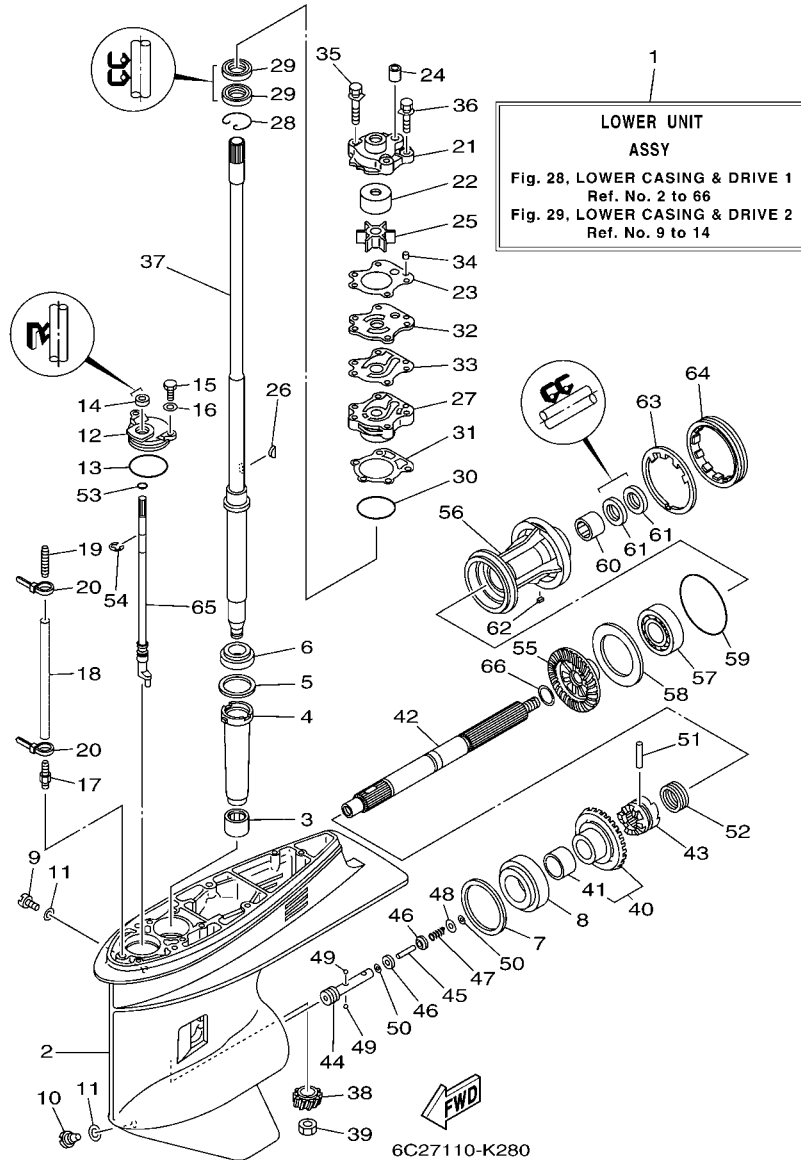
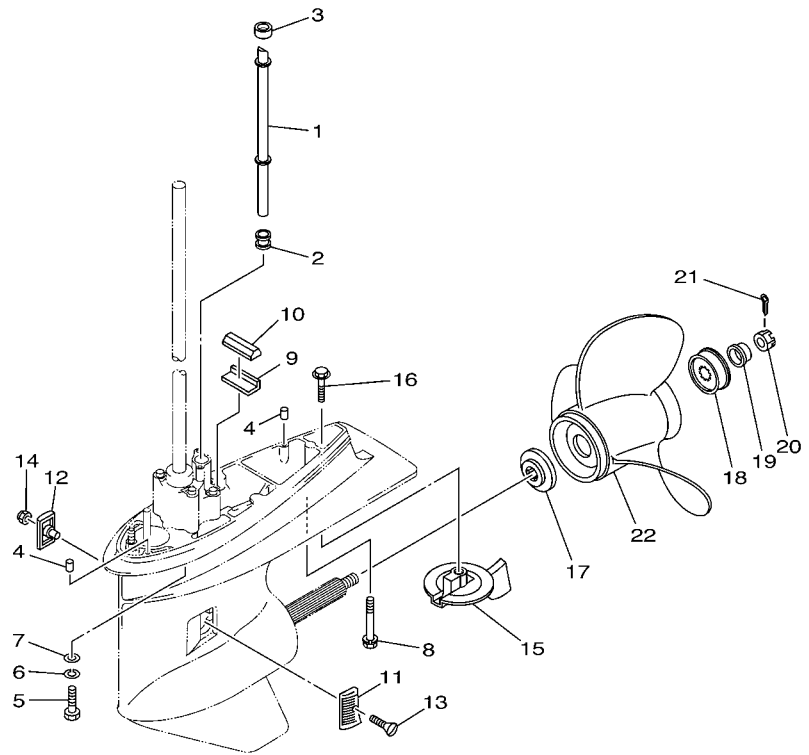


FIG. 28 LOWER CASING & DRIVE 1

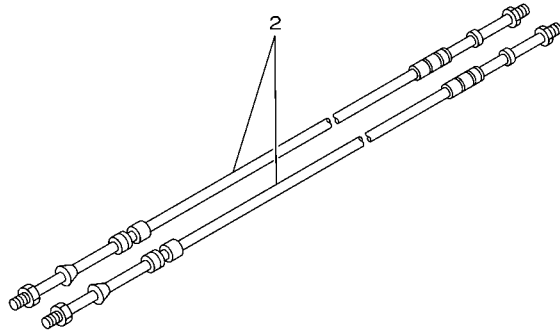
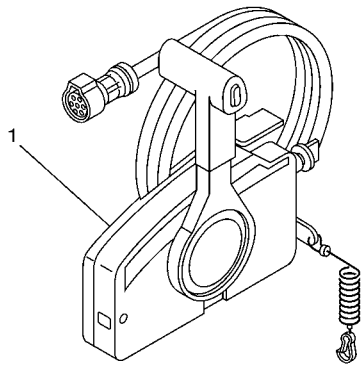
REF. NO.	PART NO.	DESCRIPTION	6C28	6C68			REMARKS
			1	1			
40	68S-45560-00	GEAR 1 (28T)	1	1			
41	93317-322V0	.BEARING	1	1			
42	67F-45611-01	SHAFT, PROPELLER	1	1			
43	6D8-45631-00	CLUTCH, DOG	1	1			
44	67F-45634-00	SLIDE, SHIFT	1	1			
45	6H1-45668-00	SHAFT, FREE 1	1	1			
46	6H1-45635-00	PLUNGER, SHIFT	2	2			
47	90501-12M48	SPRING, COMPRESSION	1	1			
48	90201-03313	WASHER, PLATE	1	1			
49	93503-16003	BALL	2	2			
50	90183-02M03	NUT, SPRING	2	2			
51	90250-07M02	PIN, STRAIGHT	1	1			
52	688-45633-00	RING, CROSS PIN	1	1			
53	93210-07003	O-RING	1	1			
54	99001-08600	CIRCLIP	1	1			
55	68S-45571-00	GEAR 2 (28T)	1	1			
56	67F-45331-00-CA	HOUSING, BEARING	1	1			
57	93306-207U0	BEARING	1	1			
58	67F-45576-00	WASHER, THRUST 2	1	1			
59	93210-86M39	O-RING	1	1			
60	93317-325U0	BEARING	1	1			
61	93101-25M03	OIL SEAL	2	2			
62	90282-04010	KEY, STRAIGHT	1	1			
63	688-45383-02	WASHER, CLAW	1	1			
64	688-45384-02	NUT	1	1			
65	64J-44150-01	SHIFT CAM ASSY	1	1			
66	90201-25M05	WASHER, PLATE	1	1			




6C21100-D290

FIG. 29 LOWER CASING & DRIVE 2

REF. NO.	PART NO.	DESCRIPTION	6C28	6C88			REMARKS
1	6C5-44361-00	TUBE, WATER 1	1	1			L(20.7")
	6C5-44361-10	TUBE, WATER 1		1			X(25.2")
2	663-44367-00	DAMPER, WATER SEAL 3	1	1			
3	663-44366-00	DAMPER, WATER SEAL 2	1	1			
4	93606-12019	PIN, DOWEL	2	2			
5	97075-10040	BOLT	4	4			L(20.7")
6	92995-10100	WASHER	4	4			L(20.7")
7	92995-10600	WASHER	4	4			L(20.7")
8	90119-08M84	BOLT, WITH WASHER	1	1			L(20.7")
9	663-45376-00	GUIDE, SEAL DAMPER	1	1			
10	688-45375-00	DAMPER, SEAL	1	1			
11	6H1-45214-00	COVER, WATER INLET 1	1	1			
12	6H1-45215-00	COVER, WATER INLET 2	1	1			
13	90151-05M00	SCREW, COUNTERSUNK	1	1			
14	90185-05002	NUT, NYLON	1	1			
15	67F-45371-00	TAB-TRIM	1	1			
16	90105-10M67	BOLT, FLANGE	1	1			
17	688-45987-01	SPACER 1	1	1			
18	67F-45997-00	SPACER 2	1	1			
19	90389-25M00	BUSH	1	1			
20	90171-16011	NUT, CASTLE	1	1			
21	91490-40025	PIN, COTTER	1	1			
22	68S-45941-00	PROPELLER (3X14"X11"-K)	1	1			UR
	6E5-45949-00	PROPELLER (3X13-5/8"X13"-K)	1	1			UR
	6E5-45954-00	PROPELLER (3X14"X11"-K)	1	1			UR



67M0100-8280

FIG. 32 REMOTE CONTROL BOX

REF. NO.	PART NO.	DESCRIPTION	6C28	6C68		REMARKS
1	703-48205-1A	REMOTE CONTROL ASSY (10P)		1		AP CAR WITH PT/T SW.
2	701-48310-90	CABLE, REMOTE CONTROL L=11F		2		UR
	701-48320-00	CABLE, REMOTE CONTROL L=12F		2		UR
	701-48320-20	CABLE, REMOTE CONTROL L=13F		2		UR
	701-48320-50	CABLE, REMOTE CONTROL L=15F		2		UR
<hr/>						
<hr/>						
<hr/>						
<hr/>						
<hr/>						
<hr/>						
<hr/>						
<hr/>						
<hr/>						

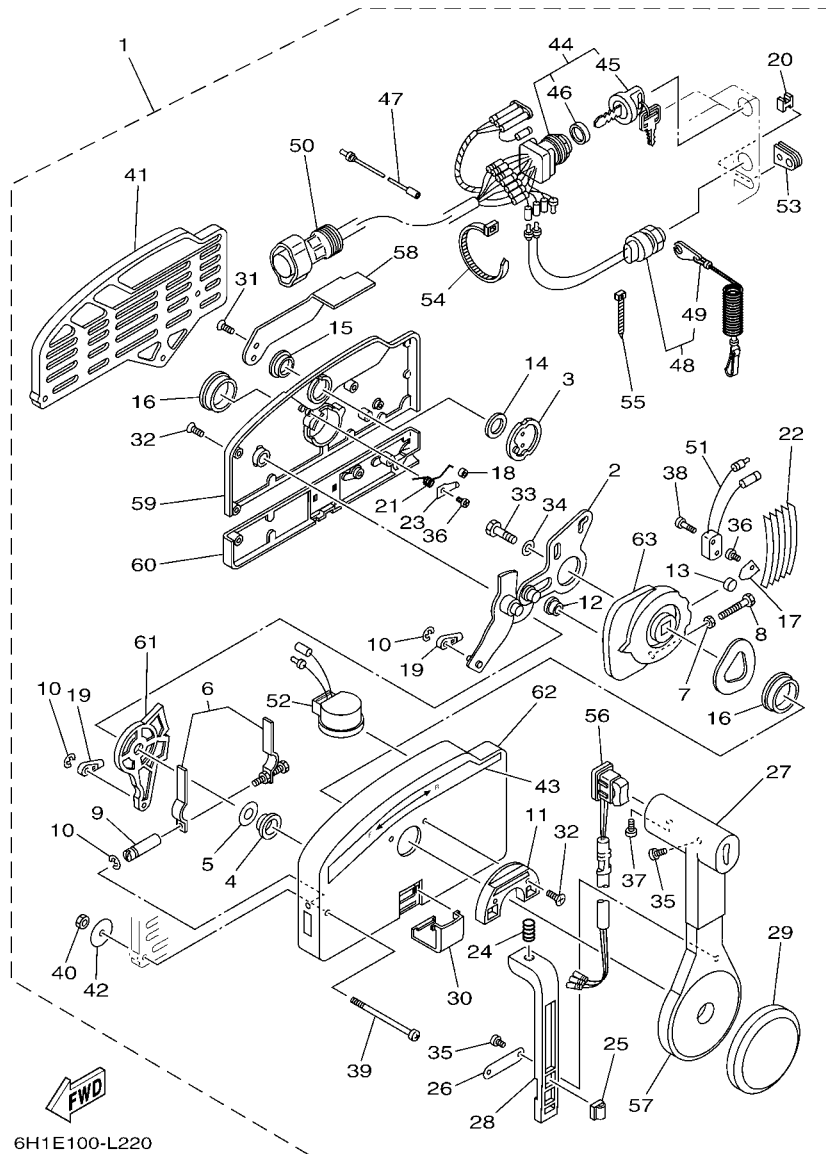
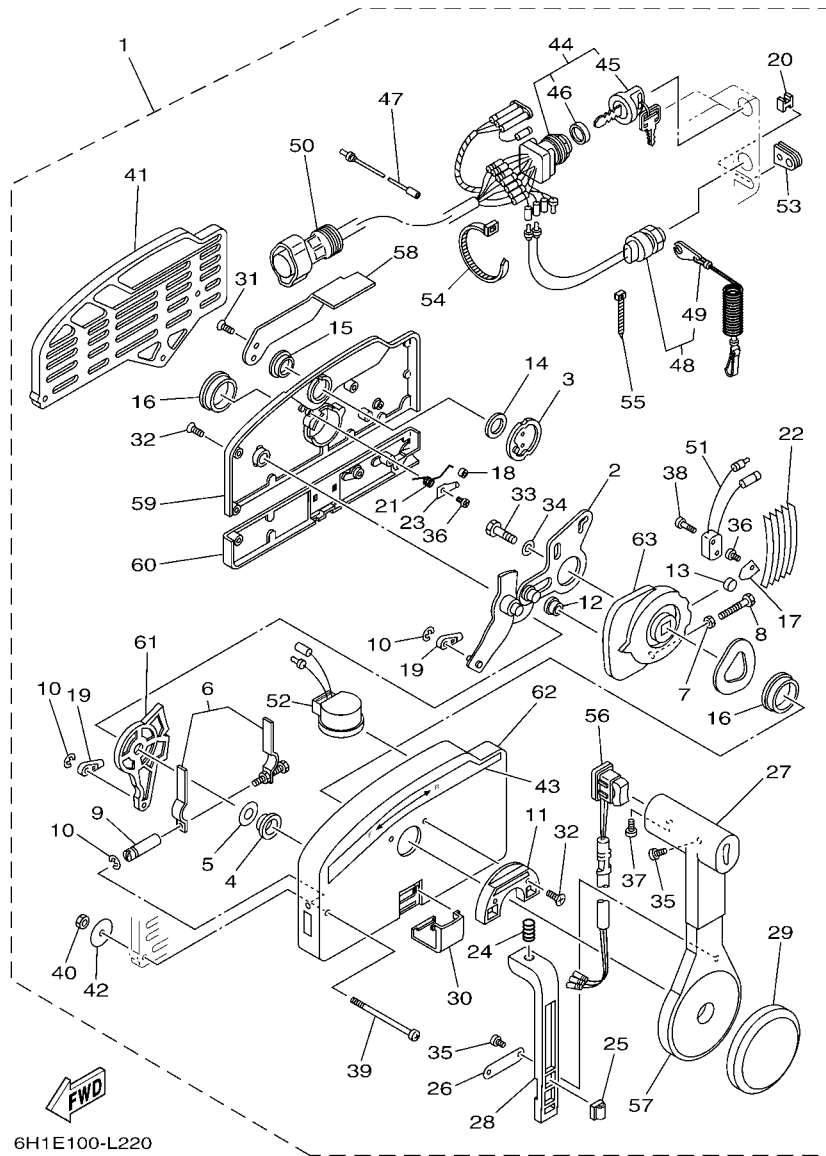


FIG. 33 REMOTE CONTROL ASSY

REF. NO.	PART NO.	DESCRIPTION	6C28	6C68	REMARKS
1	703-48205-1A	REMOTE CONTROL ASSY (10P)		1	AP CAR WITH PT/T SW.
2	703-48261-01	.ARM, THROTTLE		1	
3	703-48153-00	.SHAFT, FREE ACCEL.		1	
4	703-48235-00	.BUSHING		1	
5	703-48268-00	.SPACER		1	
6	703-48264-00	.FRICTION, THROTTLE		1	
7	95380-05600	.NUT		1	
8	97380-05025	.BOLT		1	
9	703-48265-00	.SHAFT, FRICTION		1	
10	93430-06024	.CIRCLIP		3	
11	703-48245-00	.PLATE, LOCK		1	
12	703-48252-00	.ROLLER, CAM		1	
13	701-48248-00	.ROLLER, FREE ACCEL.		1	
14	703-48198-00	.WASHER, WAVE		1	
15	703-48243-00	.BUSHING		1	
16	703-48236-00	.BUSHING 1		2	
17	703-48189-00	.RETAINER		1	
18	703-48234-00	.ROLLER, DETENT		1	
19	703-48345-01	.CABLE END, REMOTE CONTROL 2		2	
20	703-48358-00	.ANCHOR, CABLE		1	
21	703-48244-00	.SPRING, FREE ACCEL.		1	
22	703-48238-00	.SPRING, DETENT		5	
23	703-48246-00	.SPACER		1	
24	703-48227-00	.SPRING, NEUTRAL LOCK		1	
25	703-82594-00	.CLAMP		1	WITH PT/T SW.
26	703-48226-00	.PLATE, STOPPER		1	
27	703-48222-00	.GRIP, CONTROL LEVER		1	SINGLE



6H1E100-L220

FIG. 33 REMOTE CONTROL ASSY

REF. NO.	PART NO.	DESCRIPTION	6C28	6C68	REMARKS
28	703-48223-00	.LOCK, NEUTRAL		1	
29	703-48225-00	.COVER		1	
30	703-48219-00	.COVER, LEAD		1	
31	703-48281-00	.SCREW		2	
32	703-48282-00	.SCREW		7	
33	97380-08030	.BOLT		1	
34	92990-08600	.WASHER, PLATE		1	
35	98580-04010	.SCREW, PAN HEAD		3	
36	98580-04006	.SCREW, PAN HEAD		2	
37	98580-05010	.SCREW, PAN HEAD		1	
38	98580-03015	.SCREW, PAN HEAD		2	
39	703-48291-10	.SCREW (M6)		3	
40	95380-06600	.NUT, HEXAGON		3	
41	703-48293-10	.SPACER, REMOTE CONTROL		1	SINGLE
42	701-48287-00	.WASHER		3	
43	703-48215-00	.GRAPHIC		1	
44	703-82510-43	.MAIN SWITCH ASSY		1	
45	703-82577-00	..CAP, KEY		1	
46	6K1-82532-00	..CAP		1	
47	703-82531-00	.WIRE, LEAD (L70)		1	
48	688-82575-01	.ENGINE STOP SWITCH ASSY		1	
49	682-82556-00	..LANYARD, STOP SWITCH		1	
50	688-8258A-20	.EXTENSION, WIRE HARNESS (4.9M)		1	(10P)
51	703-82540-00	.NEUTRAL SWITCH ASSY		1	
52	703-83383-11	.BUZZER		1	
53	703-48284-00	.GROMMET		1	
54	703-82591-00	.BAND		1	

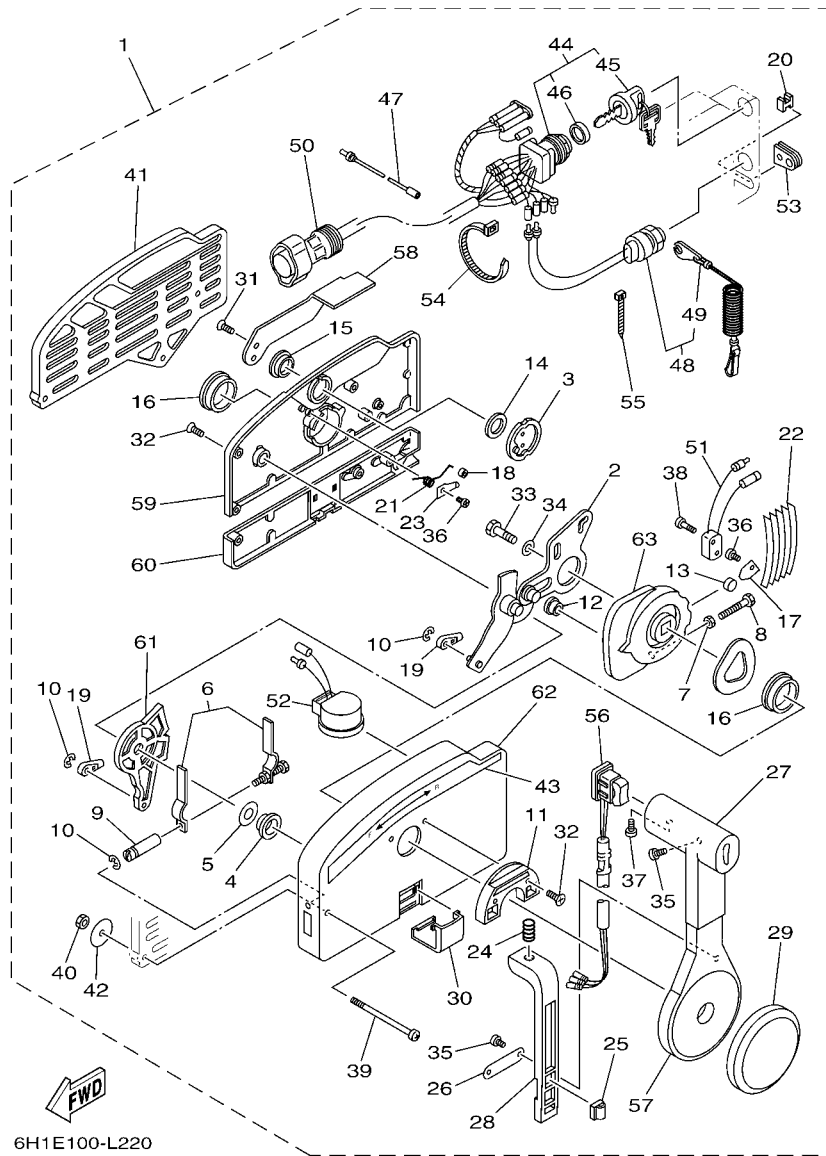
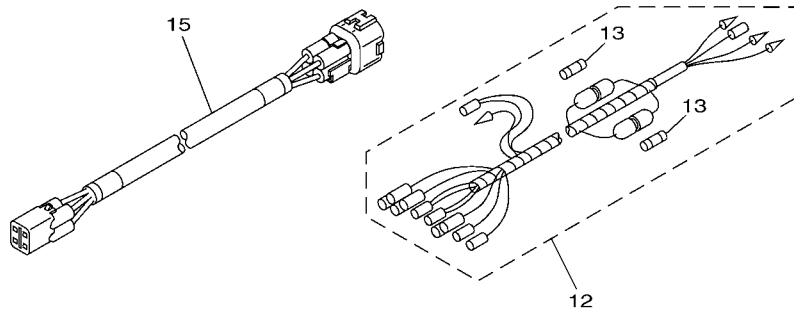
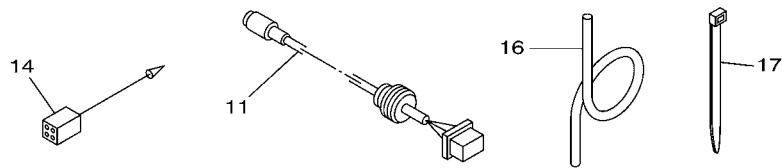
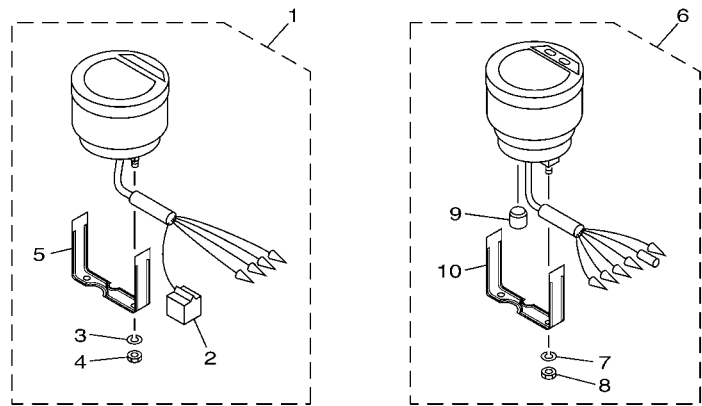


FIG. 33 REMOTE CONTROL ASSY

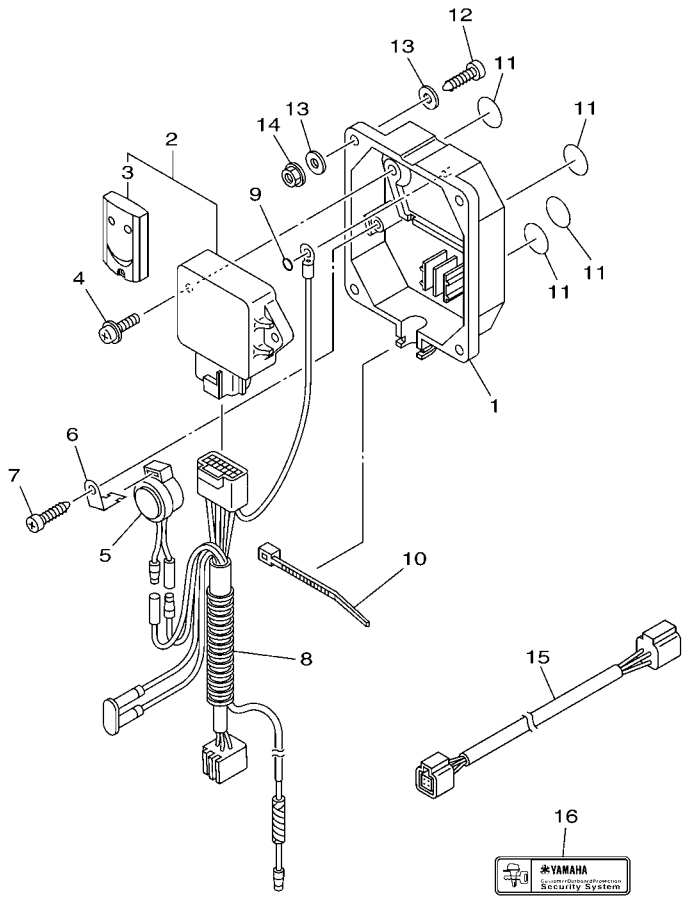
REF. NO.	PART NO.	DESCRIPTION	6C28	6C68	REMARKS
55	703-82592-00	.BAND		1	
56	703-82563-02	.TRIM & TILT SWITCH ASSY		1	WITH PT/T SW.
57	703-48221-00	.LEVER, CONTROL		1	
58	703-48152-00	.KNOB, FREE ACCEL.		1	
59	703-48212-00	.BACK PLATE 1		1	
60	703-48213-00	.BACK PLATE 2		1	
61	703-48271-00	.ARM, SHIFT		1	
62	703-48211-02	.HOUSING,1		1	
63	703-48232-00	.GEAR		1	



6C14100-G370

FIG. 34 METER

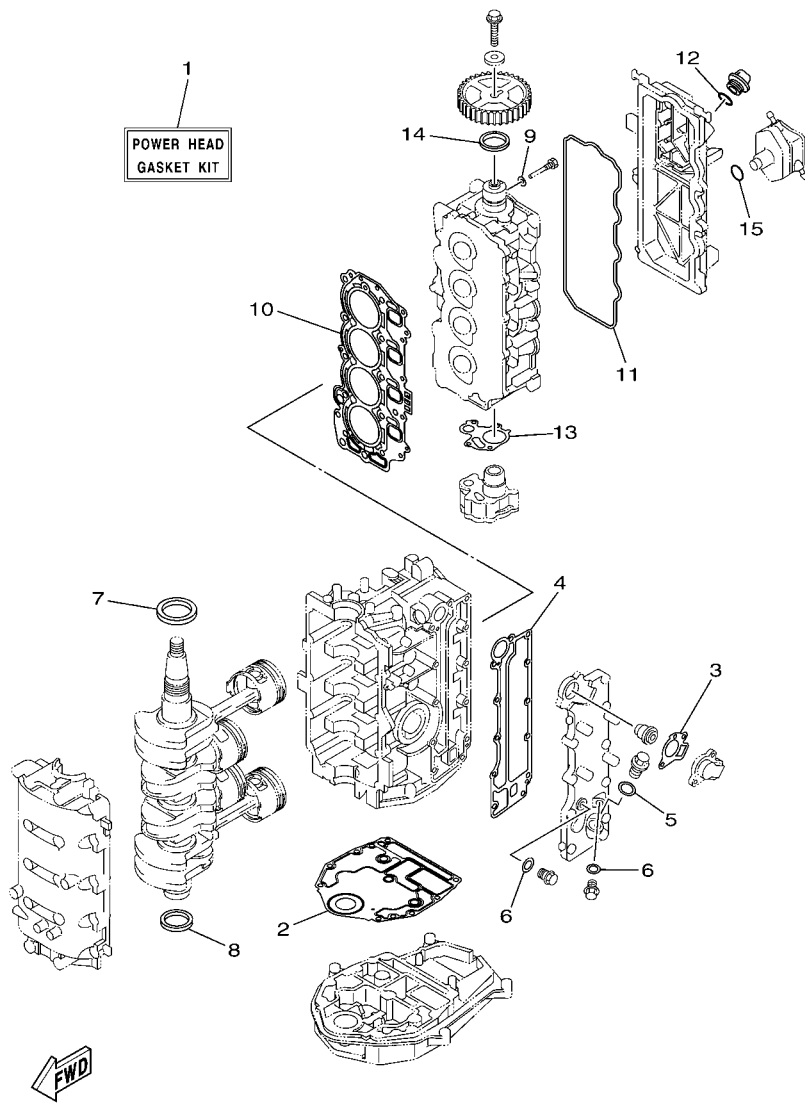
REF. NO.	PART NO.	DESCRIPTION	6C28	6C68	REMARKS
1	6Y5-8350T-90	DIGITAL TACHOMETER ASSY		1	AP FOR CAR
2	9E450-04533	.CONNECTOR		1	F-4-W
3	92990-04100	.WASHER, SPRING		2	
4	95380-04600	.NUT		2	
5	6Y5-8355X-T1	.BRACKET, METER 1		1	
6	6Y5-83570-S5	SPEEDOMETER ASSY		1	AP FOR CAR
7	92990-04100	.WASHER, SPRING		2	
8	95380-04600	.NUT		2	
9	6Y5-83533-T2	.GROMMET		1	
10	6Y5-8355X-T1	.BRACKET, METER 1		1	
11	6Y5-87122-S0	CORD ASSY 1		1	AP FOR CAR
12	6Y5-83553-M0	WIRE, LEAD (L=2.5M)		1	AP FOR CAR
13	1E6-82151-00	.FUSE (10A)		2	
14	6Y5-82117-00	WIRE, LEAD (BLACK) (L300)		1	AP FOR CAR
15	6Y5-83653-30	WIRE, LEAD (L=8.0M)		1	AP FOR CAR 4P,8M
16	6Y5-83557-10	TUBE (8M)		1	AP FOR CAR
17	90465-11M10	CLAMP		2	AP FOR CAR



6CJ1100-K370

FIG. 35 OPTIONAL PARTS

REF. NO.	PART NO.	DESCRIPTION	6C28	6C68	REMARKS
1	6Y8-86267-00	CASE COMPLETE 1		1	FOR OCE ONLY
2	6Y8-86260-11	REMOTE CONTROL UNIT ASSY		1	FOR OCE ONLY
3	6AA-86261-21	.TRANSMITTER COMP		2	
4	97980-06216	SCREW, WITH WASHER		2	FOR OCE ONLY
5	6X4-83383-00	BUZZER		1	FOR OCE ONLY
6	6X4-83386-00	STAY, BUZZER		1	FOR OCE ONLY
7	97780-60620	SCREW, TAPPING		1	FOR OCE ONLY
8	6Y8-82509-10	WIRE, SUB LEAD		1	FOR OCE ONLY
9	93210-04279	O-RING		1	FOR OCE ONLY
10	90465-11M10	CLAMP		1	FOR OCE ONLY
11	6Y8-8454G-00	PATCH 1		4	FOR OCE ONLY
12	90167-06M00	SCREW, TAPPING		4	UR FOR OCE ONLY
	97880-06035	SCREW, PAN HEAD		4	UR FOR OCE ONLY
13	90201-06M30	WASHER, PLATE		8	FOR OCE ONLY
14	95780-06300	NUT, FLANGE		4	FOR OCE ONLY
15	6Y8-82521-11	2FT PIGTAIL BUS		1	FOR OCE ONLY
16	6Y8-48277-00	STICKER 1		4	FOR OCE ONLY



6C16110-J310

FIG. 36 REPAIR KIT 1

REF. NO.	PART NO.	DESCRIPTION	6C28	6C68		REMARKS
1	6C5-W0001-02	POWER HEAD GASKET KIT	1	1		
2	6BG-11351-00	.GASKET, CYLINDER	1	1		
3	62Y-12414-00	.GASKET, COVER	1	1		
4	6C5-41114-10	.GASKET, EXHAUST OUTER COVER	1	1		
5	90430-18130	.GASKET	1	1		
6	90430-14115	.GASKET	2	2		
7	93102-43M42	.OIL SEAL	1	1		
8	93101-35002	.OIL SEAL	1	1		
9	90430-06014	.GASKET	1	1		
10	6C5-11181-01	.GASKET, CYLINDER HEAD 1	1	1		
11	62Y-11356-00	.SEAL, CYLINDER 2	1	1		
12	93210-24M79	.O-RING	1	1		
13	6C5-13329-00	.GASKET, PUMP COVER	1	1		
14	93102-37M40	.OIL SEAL	1	1		
15	93210-24M79	.O-RING	1	1		

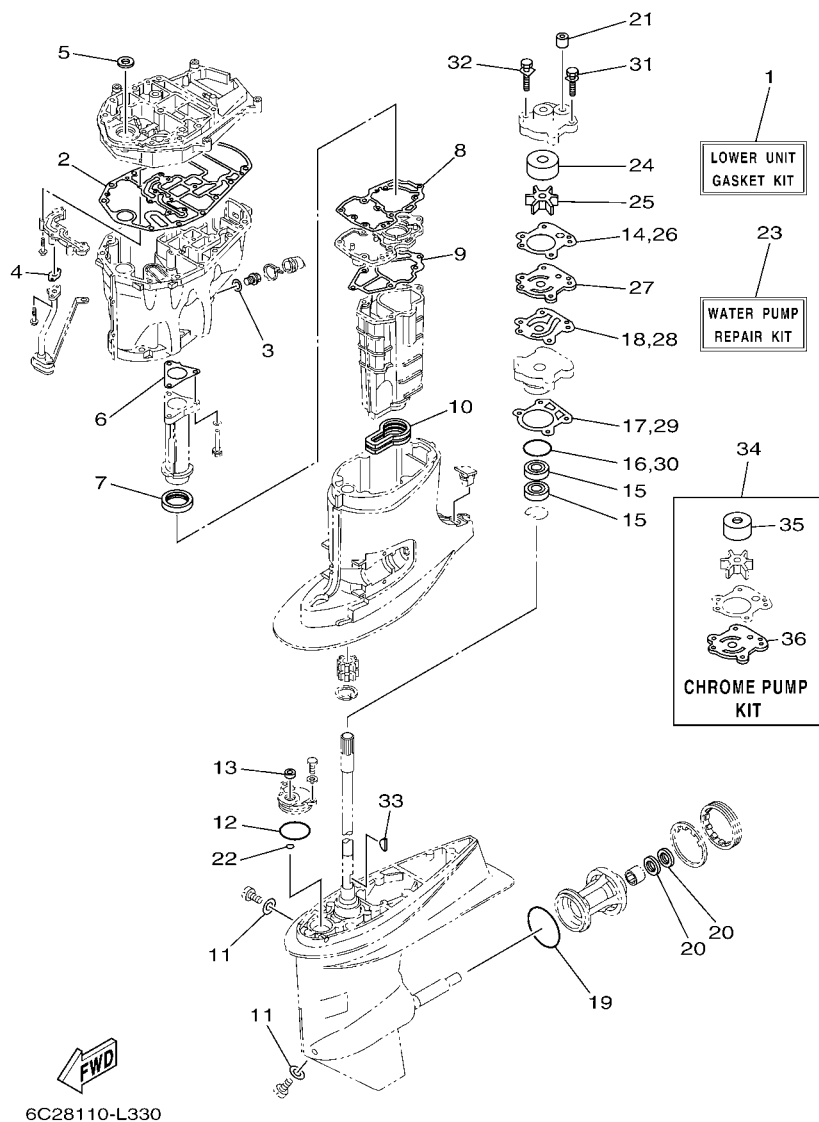


FIG. 37 REPAIR KIT 2

REF. NO.	PART NO.	DESCRIPTION	6C28	6C68	REMARKS
1	6C6-W0001-20	LOWER UNIT GASKET KIT	1	1	
2	6C5-15312-01	.GASKET, OIL PAN	1	1	
3	90430-14M09	.GASKET	1	1	
4	6C5-13414-01	.GASKET, STRAINER COVER	1	1	
5	93103-18011	.OIL SEAL	1	1	
6	6C5-41133-00	.GASKET, EXHAUST MANIFOLD 1	1	1	
7	6C5-46132-00	.GASKET 1	1	1	
8	6C5-41134-00	.GASKET, EXHAUST MANIFOLD	1	1	
9	6C5-41135-00	.GASKET, EXHAUST MANIFOLD	1	1	
10	6C5-45123-00	.GASKET, MUFFLER	1	1	
11	90430-08020	.GASKET	2	2	
12	93210-49046	.O-RING	1	1	
13	93106-09014	.OIL SEAL	1	1	
14	6H3-44315-A0	.GASKET, WATER PUMP	1	1	
15	93101-23070	.OIL SEAL	2	2	
16	93210-46044	.O-RING	1	1	
17	688-44316-A0	.GASKET, WATER PUMP	1	1	
18	6H3-44324-A0	.GASKET, CARTRIDGE	1	1	
19	93210-86M39	.O-RING	1	1	
20	93101-25M03	.OIL SEAL	2	2	
21	663-44366-00	.DAMPER, WATER SEAL 2	1	1	
22	93210-07003	.O-RING	1	1	
23	6H3-W0078-02	WATER PUMP REPAIR KIT	1	1	
24	663-44322-00	.INSERT, CARTRIDGE	1	1	
25	6H3-44352-00	.IMPELLER	1	1	
26	6H3-44315-A0	.GASKET, WATER PUMP	1	1	
27	6H3-44323-00	.OUTER PLATE, CARTRIDGE	1	1	

NUMERICAL INDEX

PART NO.	REF. NO.	PART NO.	REF. NO.	PART NO.	REF. NO.	PART NO.	REF. NO.	PART NO.	REF. NO.	PART NO.	REF. NO.
6C5-11111-01-9S	4 - 2	6C5-12151-00	5 - 12	6C5-13716-00	8 - 22	6C5-15378-00	4 - 28	6C5-2451B-00	9 - 21	6C5-42725-30	19 - 9
62Y-11119-00	4 - 22	62Y-12158-00	5 - 11	6C5-13739-00	9 - 24	6C5-15378-11	4 - 31	6C5-2451B-20	9 - 21	6C5-42726-00	19 - 43
	4 - 34	6C5-12158-00	5 - 14	6C5-13750-00	6 - 5	6C5-21337-10	8 - 24	6D8-24560-00	11 - 9	62Y-42727-00	19 - 10
62Y-11133-30	4 - 3	64J-12159-00	5 - 10	6C5-13761-00	6 - 16	6C5-21841-00	9 - 11	6D8-24562-00	11 - 12	68U-42727-00	19 - 26
6C5-11168-00	4 - 16	6C5-12159-00	5 - 13	6C5-13781-00	8 - 21	6C5-22435-00	24 - 19	6D8-24563-00	11 - 10	6H3-42727-00	19 - 27
6C5-11181-01	4 - 10	6C5-12171-00	10 - 1	6C5-13906-01	8 - 9	6C5-22471-00	24 - 12	6D8-24564-00	11 - 11	6C5-42738-00-8D	19 - 7
	36 - 10	6C5-12231-00	5 - 15	6C5-13907-00	8 - 17	6C5-2247A-00	11 - 4	6C5-24566-10	11 - 15	67C-42741-10-8D	19 - 29
6C5-11191-01-9S	4 - 14	6C5-12233-00	5 - 16	6C5-13910-10	8 - 16	6YK-24201-41	30 - 1	6C5-24592-00	8 - 10	6BG-42748-00	19 - 3
6G8-11197-01	4 - 6	6C5-12241-00	5 - 17	6C5-13915-00	8 - 19	6C5-24251-00	9 - 20	6YL-24610-10	30 - 2	6AH-42794-40	20 - 18
62Y-11325-00	2 - 18	6C5-12243-00	5 - 18	6C5-13974-00	9 - 15	6YL-24304-00	11 - 1	6YL-24629-00	30 - 4	6AH-42794-50	20 - 19
6G8-11325-00	4 - 4	6G8-12411-03	2 - 12	6C5-1410B-00	6 - 17	6G1-24304-02	11 - 1	6YL-24641-10	30 - 3	6C5-42811-00	16 - 29
66M-11327-00-94	2 - 20	688-12412-00	2 - 13	6C5-1410F-00	9 - 22	6G1-24305-05	12 - 6	6C5-28100-00	11 - 38	67C-42815-00-8D	19 - 12
66M-11328-00	2 - 19	6C5-12413-00-9S	2 - 14	6C5-14127-10	8 - 18	6Y1-24305-06	12 - 8	67F-2812A-00	16 - 33	67C-42816-01	19 - 17
6BG-11351-00	2 - 8	62Y-12414-00	2 - 15	6C5-14148-00	9 - 13	61J-24306-04	12 - 1	6C5-41113-11-9S	2 - 9	6C5-43111-01-8D	22 - 1
	36 - 2		36 - 3	6C5-14148-20	9 - 13	6YK-24306-71	30 - 5	6C5-41114-10	2 - 16	6C5-43112-01-8D	22 - 2
62Y-11356-00	4 - 19	62Y-12481-10	2 - 11	6BG-14149-00	9 - 8	6YL-24306-71	30 - 5		36 - 4	6E5-43126-02	22 - 26
	36 - 11	66M-12535-00	2 - 21	6C5-14180-01	8 - 1	6C5-24311-00	11 - 21	6C5-41131-00-CA	26 - 5	6C6-43127-00	23 - 27
6C5-11411-01	3 - 1	69W-12535-00	20 - 3	6C5-14180-20	8 - 1	6C5-24312-00	20 - 6	6C5-41133-00	26 - 4	63D-43131-01	22 - 11
6BG-11416-00	3 - 2	68T-12572-00	20 - 2	6C5-14182-10	8 - 2	6C5-24313-00	11 - 4		37 - 6	66T-43144-00	19 - 19
6BG-11416-10	3 - 2	6C5-12576-00	7 - 17	6C5-14191-00	8 - 13	6C5-24321-00	9 - 3	6C5-41134-00	26 - 8	6G5-43144-00	22 - 23
6BG-11416-20	3 - 2	6R3-12580-00	20 - 8	6C5-14200-00	6 - 1	6C5-24321-20	9 - 3		37 - 8	6E5-43145-01	31 - 9
6BG-11416-30	3 - 2	6C5-12858-00	2 - 31	6C5-14225-00	8 - 25	6C5-24322-00	9 - 4	6C5-41135-00	26 - 11	6G5-43148-00	22 - 19
6C5-11536-00	10 - 7	6C5-13105-01	6 - 10	6C5-14251-00	9 - 12	6C5-24322-20	9 - 4		37 - 9	6C5-43181-00	22 - 14
6C5-11537-00	10 - 2	62Y-13131-00	11 - 27	6C5-14386-00	8 - 5	6C5-24323-00	9 - 5	6C5-41137-02-CA	26 - 1	6C5-43185-00	22 - 15
6H4-11545-00	13 - 5	6C5-13161-00	6 - 13	6C5-14397-00	6 - 11	6CJ-24324-00	9 - 6	688-41211-01	21 - 23	6C5-43311-01-8D	22 - 9
62Y-11557-00	10 - 8	6C5-13300-01	10 - 11		8 - 14	6CJ-24325-00	9 - 7	6H4-41237-00	21 - 24	6C5-43800-01-8D	24 - 1
67C-11603-00	3 - 7	6C5-13329-00	10 - 12	6C5-14440-00	7 - 4	61N-24329-00	19 - 28	61N-42154-00	21 - 26	6C5-43801-00	24 - 3
67C-11604-00	3 - 7		36 - 13	6C5-14446-00	6 - 15	650-24351-51	12 - 5	6C5-42171-00	21 - 27	6C5-43804-01	25 - 5
67C-11605-00	3 - 7	6CJ-13411-00	27 - 8	6C1-14453-01	7 - 5	61J-24360-00	12 - 3	6C5-42335-00	21 - 32	6C5-43805-00	25 - 4
69W-11631-01-97	3 - 6	6C5-13414-01	27 - 9	6C5-14453-01	7 - 5	62Y-24374-01	11 - 32	69W-42510-01-8D	23 - 1	6C5-4380G-00	24 - 26
62Y-11633-00	3 - 8		37 - 4	6C1-14477-00	7 - 6	67F-24377-00	11 - 5	6C2-42610-20	1 - 1	6C5-4380K-00	24 - 22
69W-11635-01	3 - 6	6C5-13428-01	7 - 21	62Y-14485-00	4 - 15	688-24378-00	20 - 11	6C6-42610-20	1 - 1	6C5-43810-00	24 - 2
69W-11636-01	3 - 6	67F-13434-20	1 - 15	6C5-14496-00	6 - 9	6C5-24378-00	20 - 13	67C-42613-00-8D	1 - 2	6C5-43816-00	24 - 25
6C5-11650-00	3 - 3	6C5-13437-42	13 - 16	6C5-14546-10	8 - 4	6C5-24379-00	9 - 17	6C5-42615-00	1 - 13	6C5-43817-10	24 - 23
6C5-11654-00	3 - 4	6C5-13437-52	13 - 16	6C5-14567-00	8 - 15	6C5-24387-00	9 - 14	6C5-42651-00	1 - 4	6CJ-43818-00	22 - 35
6CJ-11656-00	3 - 5	6C5-13437-62	13 - 16	6C5-14711-00-CA	26 - 12	6C5-24410-00	11 - 23	67C-42652-02	1 - 6	6C5-4381B-00	24 - 14
6CJ-11656-10	3 - 5	5GH-13440-20	2 - 30	6C5-14960-10	8 - 12	62Y-24411-02	11 - 25	60A-42677-00	1 - 9	6C5-4381K-00	24 - 39
6CJ-11656-20	3 - 5	69W-13448-00	1 - 14	6C5-14984-00	8 - 23	6C5-24415-00	11 - 24	6C5-42677-10	1 - 9	6C6-4381K-00	24 - 42
6CJ-11656-30	3 - 5	6C5-13542-00	9 - 2	6C5-14985-00	8 - 3	6C5-2441R-10	8 - 6	61S-42678-10	1 - 10	6C5-43821-00	24 - 5
69W-12111-00	5 - 1	6C5-13545-00	9 - 18	6C5-15100-11	2 - 2	6C5-2441T-10	8 - 7	6C6-42678-20	1 - 10	62Y-43822-00	24 - 4
51Y-12114-00	5 - 4	6C5-13546-00	9 - 1	6C5-15311-01-CA	27 - 1	62Y-24423-00	11 - 26	61S-42681-00	1 - 12	6H1-43829-00	24 - 67
62Y-12116-00	5 - 3	6C5-13547-00	9 - 19	6C5-15312-01	27 - 2	6C5-24444-00	9 - 9	6C5-42710-10-8D	19 - 1	6C6-4382E-00	24 - 32
30X-12117-00	5 - 5	6C5-13548-00	9 - 23		37 - 2	62Y-24444-01	11 - 29	62Y-42715-01	21 - 10	6C5-4382K-00	24 - 45
30X-12118-00	5 - 6	6C5-13557-10	6 - 4	6CJ-15316-00	27 - 4	6C5-24453-00	8 - 8	62Y-42716-00	19 - 5	6C5-4382L-00	24 - 60
51Y-12119-00	5 - 7	6C5-13577-00	9 - 10	6C5-1531A-01	4 - 27	62Y-24454-00	11 - 28	65W-42717-00	19 - 6	6C5-43830-00	24 - 28
69W-12121-00	5 - 2	6C5-13593-00	8 - 20	6CJ-15333-00	27 - 10	6D8-24469-00	11 - 13	6C5-42718-00	19 - 8	6C5-43831-00	24 - 68
6C5-12146-00	5 - 8	6C5-13641-00	6 - 2	6C5-15362-00	27 - 12	6C5-24471-00	11 - 30	6BG-42724-00	19 - 23	6C5-43833-00	22 - 36
62Y-12151-00	5 - 9	6C5-13645-10	6 - 3	6G8-15363-00	4 - 25	6D8-24519-00	11 - 14	65W-42724-10	20 - 1	6C5-43834-00	22 - 37

NUMERICAL INDEX

PART NO.	REF. NO.	PART NO.	REF. NO.	PART NO.	REF. NO.	PART NO.	REF. NO.	PART NO.	REF. NO.	PART NO.	REF. NO.
6C5-43841-00	24 - 61	69W-44121-00	21 - 1	6H1-45214-00	29 - 11	688-45987-01	29 - 17	701-48320-50	32 - 2	6C5-81948-00	15 - 21
6C6-43841-00	24 - 29	688-44122-00	21 - 19	6H1-45215-00	29 - 12	67F-45997-00	29 - 18	69W-48344-00	21 - 22	68V-8194A-00	15 - 32
6C5-43845-00	24 - 65	6C5-44122-00	21 - 8	65W-45251-00	22 - 5	6C5-46132-00	26 - 6		21 - 36	60E-81950-00	15 - 1
62X-4384H-00	24 - 18	62Y-44135-00	21 - 29		22 - 7		37 - 7	703-48345-01	33 - 19	63P-81950-00	15 - 27
6C5-43851-00	24 - 38	64J-44150-01	28 - 65		22 - 24	6C5-46241-00	10 - 6	703-48358-00	33 - 20	6C5-81953-00	15 - 35
6C6-43853-00	24 - 34	6H3-44311-00	28 - 21	68S-45300-32-8D	28 - 1	703-48152-00	33 - 58	65W-48511-00	23 - 43	68V-81960-10	14 - 14
6C5-43854-00	24 - 47	6H3-44315-A0	28 - 23	68S-45300-42-8D	28 - 1	703-48153-00	33 - 3	62Y-48538-00	21 - 38	6AH-81994-40	13 - 20
6C5-43855-00	24 - 43		37 - 14	67F-45301-00-8D	28 - 2	703-48189-00	33 - 17	65W-61350-00	31 - 1	6AH-81994-50	13 - 21
6C5-43856-00	24 - 44		37 - 26	69W-45318-00	26 - 18	703-48198-00	33 - 14	65W-61351-00	31 - 2	6AH-81995-40	13 - 17
6C5-43861-00	24 - 10	688-44316-A0	28 - 31	688-45321-00	28 - 12	703-48205-1A	32 - 1	6C5-81145-00	6 - 7	6AH-81995-50	13 - 18
	24 - 21		37 - 17	67F-45331-00-CA	28 - 56		33 - 1	6C5-81146-00	6 - 12	6AG-81996-00	13 - 22
6C5-43862-00	24 - 9		37 - 29	688-45341-10	28 - 10	703-48211-02	33 - 62	68V-81315-00	16 - 10	6C5-82105-U0	17 - 1
62Y-43863-00	24 - 6	663-44322-00	28 - 22	67F-45371-00	29 - 15	703-48212-00	33 - 59	6C5-81336-00	15 - 2	6Y5-82117-00	34 - 14
6C5-43863-00	24 - 8		37 - 24	688-45375-00	29 - 10	703-48213-00	33 - 60	6C5-81337-00	13 - 1	6G5-82119-00	15 - 34
6D8-43863-00	24 - 63	663-44322-40	37 - 35	663-45376-00	29 - 9	703-48215-00	33 - 43	6C5-81410-01	13 - 4	682-82119-01	15 - 28
6C5-43869-00	25 - 6	6H3-44323-00	28 - 32	6E5-45378-00	28 - 17	703-48219-00	33 - 30	6C5-81450-00	13 - 3	67C-82127-10	23 - 34
6C6-4386E-00	24 - 58		37 - 27	688-45383-02	28 - 63	703-48221-00	33 - 57	6CJ-81800-00	18 - 1	6E5-82148-00	22 - 3
6C6-4386G-00	24 - 57	6H3-44323-40	37 - 36	688-45384-02	28 - 64	703-48222-00	33 - 27	69J-81801-00	18 - 5	1E6-82151-00	34 - 13
6C5-4386K-00	25 - 11	6H3-44324-A0	28 - 33	64J-45501-30	28 - 37	703-48223-00	33 - 28	67F-81807-00	18 - 10	67F-82151-00	16 - 2
6C5-43871-00	24 - 11		37 - 18	64J-45501-40	28 - 37	703-48225-00	33 - 29	67F-81808-00	18 - 8	67F-82151-10	16 - 3
62X-43872-00	24 - 7		37 - 28	688-45536-01	28 - 4	703-48226-00	33 - 26	67F-81809-00	18 - 19	67F-8215B-10	16 - 4
6C5-43872-00	24 - 62	6H3-44341-01-CA	28 - 27	6K5-45551-00	28 - 38	703-48227-00	33 - 24	67F-81810-00	18 - 3	67F-8215B-20	16 - 5
6C5-43875-00	24 - 13	6H3-44352-00	28 - 25	68S-45560-00	28 - 40	703-48232-00	33 - 63	67F-81813-00	18 - 6	6C5-82171-00	14 - 17
6H1-43875-00	24 - 64		37 - 25	688-45567-01	28 - 7	703-48234-00	33 - 18	6C5-81815-00	15 - 17	6C5-82176-00	16 - 27
6C6-43878-00	24 - 51	6C5-44361-00	29 - 1	688-45567-10	28 - 7	703-48235-00	33 - 4	68F-81820-00	18 - 7	63P-82310-01	14 - 5
6C5-43879-00	25 - 7	6C5-44361-10	29 - 1	688-45567-20	28 - 7	703-48236-00	33 - 16	67F-81821-00	18 - 13	6C5-82316-01	14 - 11
62Y-4387G-00	24 - 52	663-44366-00	28 - 24	688-45567-30	28 - 7	703-48238-00	33 - 22	6C5-81822-00-94	17 - 3	6C5-82316-11	14 - 12
6C6-4387G-00	24 - 35		29 - 3	688-45567-40	28 - 7	703-48243-00	33 - 15	6K7-81826-11	18 - 24	6A0-82317-00	7 - 8
6C5-43880-01	25 - 1		37 - 21	688-45567-50	28 - 7	703-48244-00	33 - 21	69J-81828-00	18 - 25		15 - 26
6C5-43881-01	25 - 8	663-44367-00	29 - 2	688-45567-60	28 - 7	703-48245-00	33 - 11	6C5-8182L-00	6 - 8	6C5-82317-00	14 - 21
6C5-43882-00	25 - 9	6C5-44385-01	23 - 37	68S-45571-00	28 - 55	703-48246-00	33 - 23	67F-81830-00	18 - 17	6E7-82317-00	19 - 25
6H1-43883-00	24 - 30	6BL-44391-00	19 - 22	67F-45576-00	28 - 58	701-48248-00	33 - 13	67F-81832-00	18 - 11	6C5-82340-01	14 - 6
6C5-43885-00	23 - 17	64J-44514-00	23 - 10	688-45587-01	28 - 5	703-48252-00	33 - 12	67F-81836-00	18 - 12	63V-82377-50	22 - 40
62X-43888-00	25 - 12	69W-44526-01	23 - 12	688-45587-10	28 - 5	703-48261-01	33 - 2	6C5-81839-00	18 - 21	6C5-82388-00	16 - 14
6C6-4388E-00	24 - 55	69W-44551-00-8D	23 - 15	688-45587-20	28 - 5	703-48264-00	33 - 6	67F-8183R-00	18 - 16	64J-82504-00	16 - 22
6C6-4388F-00	24 - 56	6C5-44552-00-8D	23 - 18	688-45587-30	28 - 5	703-48265-00	33 - 9	60V-8183T-00	18 - 18	6Y8-82509-10	35 - 8
6C5-43891-00	25 - 10	67C-44553-00-8D	23 - 28	688-45587-40	28 - 5	703-48268-00	33 - 5	69J-81840-00	18 - 4	703-82510-43	33 - 44
6C5-43893-00	24 - 40	69W-44555-00-94	23 - 19	688-45587-50	28 - 5	703-48271-00	33 - 61	67F-81841-00	18 - 14	6Y8-82521-11	35 - 15
6C6-43893-00	24 - 41	6C5-44575-00	23 - 21	688-45587-60	28 - 5	6Y8-8277-00	35 - 16	60X-81842-00	18 - 20	6C5-8252R-00	16 - 28
6C6-43894-00	24 - 31	6C5-45111-00-8D	26 - 24	67F-45611-01	28 - 42	703-48281-00	33 - 31	67F-81846-00	18 - 26	703-82531-00	33 - 47
6C5-43895-00	24 - 46	6C5-45123-00	26 - 14	6D8-45631-00	28 - 43	703-48282-00	33 - 32	67F-81850-00	18 - 2	6K1-82532-00	33 - 46
6C5-43899-00	24 - 16		37 - 10	688-45633-00	28 - 52	703-48284-00	33 - 53	703-82540-00	18 - 9	6C5-82553-00	33 - 51
69J-4389J-00	24 - 24	6C5-45135-01	27 - 13	67F-45634-00	28 - 44	701-48287-00	33 - 42	6C5-81869-00	18 - 23	6C5-82553-00	16 - 11
	24 - 36	6C5-45136-01	27 - 14	6H1-45635-00	28 - 46	703-48291-10	33 - 39	67F-81891-00	18 - 15	6C5-82554-01	16 - 18
62Y-44117-01-94	21 - 2	6C5-45155-00	26 - 17	6H1-45668-00	28 - 45	703-48293-10	33 - 41	6C5-81919-00	16 - 34	682-82556-00	33 - 49
62Y-44118-00-94	21 - 11	6C5-45181-00-CA	26 - 9	68S-45941-00	29 - 22	701-48310-90	32 - 2	60V-81925-00	15 - 14	703-82563-02	33 - 56
6C5-44120-01	21 - 7	6C5-45211-00-8D	26 - 25	6E5-45949-00	29 - 22	701-48320-00	32 - 2	6C5-81941-00	18 - 22	63D-82563-10	15 - 39
6C5-44120-11	21 - 7	6C5-45213-00-5B	26 - 26	6E5-45954-00	29 - 22	701-48320-20	32 - 2	6C5-81942-00	16 - 23	688-82575-01	33 - 48

NUMERICAL INDEX

PART NO.	REF. NO.	PART NO.	REF. NO.	PART NO.	REF. NO.	PART NO.	REF. NO.	PART NO.	REF. NO.	PART NO.	REF. NO.
703-82577-00	33 - 45	6C5-W0001-02	36 - 1	90119-08M14	37 - 31	90266-06M02	1 - 5	90445-07MF2	23 - 32	90465-13M24	16 - 26
6C5-8257V-00	15 - 4	6C6-W0001-20	37 - 1	90119-08M33	28 - 35	90280-03M01	10 - 10	90445-09091	20 - 15	90465-13M39	16 - 24
68F-82582-00	15 - 16	61S-W0070-00	1 - 11		37 - 32	90280-03M03	28 - 26	90445-09220	20 - 12	90465-13M97	13 - 15
6P2-82582-00	16 - 6	6H3-W0078-02	37 - 23	90119-08M84	29 - 8		37 - 33	90445-09226	20 - 9		15 - 38
6P2-82582-10	16 - 7	6H3-W0078-1A	37 - 34	90151-05M00	29 - 13	90282-04010	28 - 62	90445-09304	20 - 16		15 - 43
6E5-82587-00	15 - 42	6C5-W009A-12-9S	4 - 1	90159-04005	15 - 18	90340-08002	28 - 9	90445-11M05	12 - 4	90467-09M17	11 - 8
61A-82588-01	16 - 19	6C5-W009B-04-9S	2 - 1	90159-06M14	16 - 25	90340-14M06	2 - 28	90445-11M06	12 - 2	90467-10M04	11 - 22
688-8258A-20	33 - 50	90101-06020	22 - 6	90167-06002	20 - 4		27 - 6	90445-13020	11 - 6		11 - 36
6C5-82590-40	16 - 1		22 - 8	90167-06M00	35 - 12	90340-18M09	2 - 26	90445-13M02	11 - 6	90468-18008	21 - 18
703-82591-00	33 - 54		22 - 25	90170-09M03	31 - 5	90344-51003	2 - 7	90445-13M36	11 - 21		21 - 21
703-82592-00	33 - 55	90101-06054	21 - 12	90170-16M01	28 - 39	90386-10025	22 - 17	90446-14M62	11 - 37		21 - 37
703-82594-00	33 - 25	90101-08M15	23 - 11	90170-20137	13 - 6	90386-10M16	22 - 16	90447-07001	23 - 38	90480-09M12	8 - 27
60V-8259F-00	16 - 17	90101-09M01	31 - 7	90171-16011	29 - 20	90386-12M37	19 - 13	90447-10006	20 - 17	90480-10M58	11 - 17
6X4-83383-00	35 - 5	90101-12M65	22 - 41	90179-06029	1 - 3	90386-12MA2	19 - 14	90447-19009	22 - 34	90480-12072	17 - 2
703-83383-11	33 - 52	90105-08060	5 - 20	90179-08003	15 - 15	90386-18M35	22 - 28	90450-50001	7 - 7	90480-12314	13 - 2
6X4-83386-00	35 - 6	90105-09005	4 - 12	90179-35001	10 - 9	90386-18M92	22 - 27	90462-08031	20 - 10	90480-13598	16 - 32
6Y5-8350T-90	34 - 1	90105-10M67	29 - 16	90183-02M03	28 - 50	90386-22MA4	22 - 12	90464-06001	14 - 13	90480-13M24	19 - 35
6Y5-83533-T2	34 - 9	90109-06047	1 - 7	90185-05002	29 - 14	90386-30M60	23 - 6	90464-07M05	14 - 8	90480-16013	11 - 16
6Y5-83553-M0	34 - 12	90109-06M65	4 - 8	90185-06M05	1 - 8	90386-30M77	23 - 4	90464-07M41	14 - 7	90480-24003	17 - 11
6Y5-83557-10	34 - 16	90109-06M80	19 - 34	90185-08045	23 - 13	90386-30M78	23 - 3	90464-07M56	6 - 14	90501-12082	21 - 13
6E5-83558-00	23 - 33		20 - 5	90185-09M01	31 - 4	90386-90M90	21 - 15	90464-09M13	19 - 24	90501-12M48	28 - 47
	23 - 40	90109-06M81	19 - 11	90185-10051	23 - 8	90387-04001	16 - 20	90464-09M49	19 - 37	90506-14M24	22 - 21
6E5-83558-10	28 - 19	90109-06M86	15 - 41	90185-22M11	22 - 13	90387-06119	7 - 9	90464-10006	23 - 39	90506-18M40	19 - 21
6Y5-8355X-T1	34 - 5		19 - 20	90201-03313	28 - 48		14 - 22	90464-12006	7 - 19	91318-03005	24 - 59
	34 - 10	90109-12MA3	23 - 22	90201-06M30	35 - 13		15 - 24	90464-15008	7 - 18	91318-03016	24 - 54
6Y5-83570-S5	34 - 6	90116-10038	23 - 7	90201-10060	22 - 39	90387-06M43	19 - 36	90464-18007	16 - 30	91318-04030	24 - 53
6C5-83614-01	15 - 40	90116-10M53	26 - 29	90201-10120	23 - 44	90387-06M45	21 - 30	90464-18246	14 - 4	91318-05025	24 - 50
62Y-83626-00	13 - 19	90119-06025	10 - 13	90201-10144	10 - 5	90387-06M69	8 - 26	90464-76001	22 - 32	91318-05030	24 - 37
67F-83627-01	18 - 27	90119-06077	16 - 31	90201-10M20	21 - 16		19 - 4	90465-05M87	15 - 7	91318-05045	24 - 27
6Y5-83653-30	34 - 15	90119-06087	7 - 3		31 - 3	90387-06M82	21 - 35	90465-06M86	23 - 30	91318-05050	24 - 70
63D-83672-11	22 - 30	90119-06106	7 - 10	90201-10M63	31 - 8	90387-08095	11 - 18	90465-11M10	7 - 20	91490-16010	21 - 28
68F-83688-00	6 - 18		21 - 31	90201-12062	22 - 42	90387-10M42	31 - 6		9 - 16	91490-20015	21 - 17
6Y8-8454G-00	35 - 11	90119-06261	26 - 7	90201-12426	22 - 43	90389-25M00	29 - 19		11 - 7	91490-40025	29 - 21
6C5-85525-00	14 - 1	90119-06M59	14 - 23	90201-12M07	19 - 16	90413-05014	23 - 36		15 - 36	91690-30020	22 - 18
6C5-85548-00	15 - 22		15 - 25	90201-12M16	23 - 16	90430-06014	4 - 9		19 - 38	92903-06600	2 - 6
6C5-85561-00	13 - 9	90119-06M61	7 - 11	90201-13M19	23 - 25		36 - 9		20 - 7	92903-08100	15 - 20
62Y-85580-00	13 - 12		19 - 2	90201-16014	5 - 19	90430-08020	28 - 11		20 - 14	92903-08600	17 - 13
6CJ-85790-00	16 - 12	90119-06MA3	4 - 13	90201-21M18	13 - 7		37 - 11		22 - 33	92907-04600	4 - 18
6C5-85885-00	6 - 6	90119-06MA5	2 - 17	90201-22M05	23 - 26	90430-14115	2 - 29		23 - 31	92990-04100	34 - 3
6C1-8591A-32	14 - 20	90119-08069	7 - 2	90201-25M05	28 - 66		16 - 13		23 - 42		34 - 7
6C5-8591A-32	14 - 20	90119-08100	23 - 29	90201-30M00	23 - 2		36 - 6		28 - 20	92990-06100	19 - 32
6C5-86112-00	7 - 14	90119-08102	26 - 15	90202-07M07	21 - 20	90430-14M09	27 - 7		34 - 17	92990-06600	19 - 33
6C5-86120-00	7 - 12	90119-08131	23 - 20	90202-21100	23 - 24		37 - 3		35 - 10		19 - 41
6Y8-86260-11	35 - 2	90119-08132	26 - 16	90206-08N51	25 - 2	90430-18130	2 - 27	90465-11M59	27 - 5	92990-08200	5 - 21
6AA-86261-21	35 - 3	90119-08148	11 - 19	90206-10M04	21 - 34		36 - 5	90465-13M11	16 - 9	92990-08600	33 - 34
6Y8-86267-00	35 - 1	90119-08154	2 - 4	90206-12052	19 - 15	90445-07M30	23 - 41	90465-13M18	7 - 24	92990-10100	26 - 32
6Y5-87122-S0	34 - 11	90119-08M00	26 - 30	90249-06M19	22 - 20	90445-07M31	28 - 18		17 - 14	92995-05600	2 - 23
6C5-87226-00	8 - 11	90119-08M14	28 - 36	90250-07M02	28 - 51	90445-07ME8	28 - 18	90465-13M24	16 - 8		13 - 14

NUMERICAL INDEX

PART NO.	REF. NO.	PART NO.	REF. NO.	PART NO.	REF. NO.	PART NO.	REF. NO.	PART NO.	REF. NO.	PART NO.	REF. NO.
92995-06100	15 - 9	93210-07003	28 - 53	93608-12M05	26 - 3	97095-06020	15 - 11				
	15 - 12		37 - 22	93700-06M03	22 - 10		15 - 30				
	19 - 42	93210-08287	12 - 7	94702-00418	4 - 37		19 - 39				
92995-06600	2 - 25		12 - 9	95023-06030	13 - 8		21 - 3				
	4 - 21	93210-09165	24 - 66		13 - 10	97095-06025	11 - 2				
	4 - 24	93210-13M63	4 - 7	95302-03600	24 - 49		14 - 9				
	4 - 30	93210-16275	31 - 10	95333-08600	15 - 19		14 - 15				
	4 - 33	93210-24M79	4 - 26	95380-04600	34 - 4		21 - 5				
	4 - 36		11 - 33		34 - 8	97095-06030	11 - 34				
	7 - 16		36 - 12	95380-05600	11 - 31	97095-08025	17 - 9				
	7 - 23		36 - 15		33 - 7	97095-08035	17 - 7				
	11 - 3	93210-29M94	23 - 5	95380-05700	21 - 25	97380-05025	33 - 8				
	11 - 35	93210-46044	28 - 30	95380-06600	7 - 13	97380-08030	33 - 33				
	14 - 3		37 - 16		19 - 30	97575-06520	26 - 27				
	14 - 10		37 - 30		33 - 40	97575-06525	26 - 13				
	14 - 16	93210-49046	28 - 13	95380-06800	19 - 40	97575-08530	23 - 14				
	14 - 19		37 - 12	95380-08600	11 - 20	97575-10530	22 - 38				
	15 - 6	93210-64488	24 - 69		17 - 6	97595-05514	21 - 9				
	15 - 10	93210-86M39	28 - 59	95380-10600	26 - 31	97595-06610	15 - 29				
	15 - 13		37 - 19	95380-12600	22 - 44		15 - 33				
	15 - 31	93306-207U0	28 - 57	95380-12700	23 - 23	97780-60620	15 - 3				
	16 - 16	93315-52563	28 - 3	95680-08330	17 - 5		15 - 23				
	21 - 4	93317-322V0	28 - 41	95780-06300	35 - 14		15 - 37				
	21 - 6	93317-325U0	28 - 60	95812-06035	27 - 11		35 - 7				
	28 - 16	93332-00095	28 - 8	95817-10035	10 - 4	97880-05025	4 - 5				
92995-08600	17 - 8	93332-000U3	28 - 6	95895-06035	21 - 33	97880-06025	19 - 31				
	17 - 10	93399-999T8	25 - 3	97013-06035	2 - 5	97880-06035	35 - 12				
92995-10100	26 - 21	93410-18M05	22 - 29	97013-08045	17 - 12	97885-06008	22 - 4				
	29 - 6	93410-28M06	23 - 9	97075-10040	29 - 5		23 - 35				
92995-10600	26 - 22	93420-36M01	26 - 19	97075-10045	26 - 20	97980-06216	35 - 4				
	26 - 33	93430-06024	33 - 10	97095-05012	2 - 22	97985-04116	16 - 21				
	29 - 7	93450-17129	3 - 9		13 - 13	97985-06216	22 - 31				
92A08-03110	24 - 48	93450-32116	24 - 15	97095-06010	22 - 22	98507-04010	4 - 17				
93101-23070	28 - 29	93450-40165	28 - 28	97095-06014	4 - 29	98580-03015	33 - 38				
	37 - 15	93501-04M02	21 - 14		4 - 32	98580-04006	33 - 36				
93101-25M03	28 - 61	93503-16003	24 - 17		14 - 2	98580-04010	33 - 35				
	37 - 20		28 - 49		14 - 18	98580-05010	33 - 37				
93101-35002	3 - 11	93505-32038	24 - 33		15 - 5	99001-08600	28 - 54				
	36 - 8	93604-10M03	2 - 10		16 - 15	99009-32500	24 - 20				
93102-37M40	10 - 14		26 - 10		19 - 18	99530-08012	4 - 11				
	36 - 14		28 - 34	97095-06016	7 - 15		13 - 11				
93102-43M42	3 - 10	93605-17002	10 - 3		7 - 22	99590-10114	17 - 4				
	36 - 7	93606-12019	2 - 3		28 - 15	9E450-04533	34 - 2				
93103-18011	26 - 2		26 - 23	97095-06020	2 - 24						
	37 - 5		26 - 28		4 - 20						
93106-09014	28 - 14		27 - 3		4 - 23						
	37 - 13		29 - 4		4 - 35						
93210-04279	35 - 9	93608-12M05	7 - 1		15 - 8						